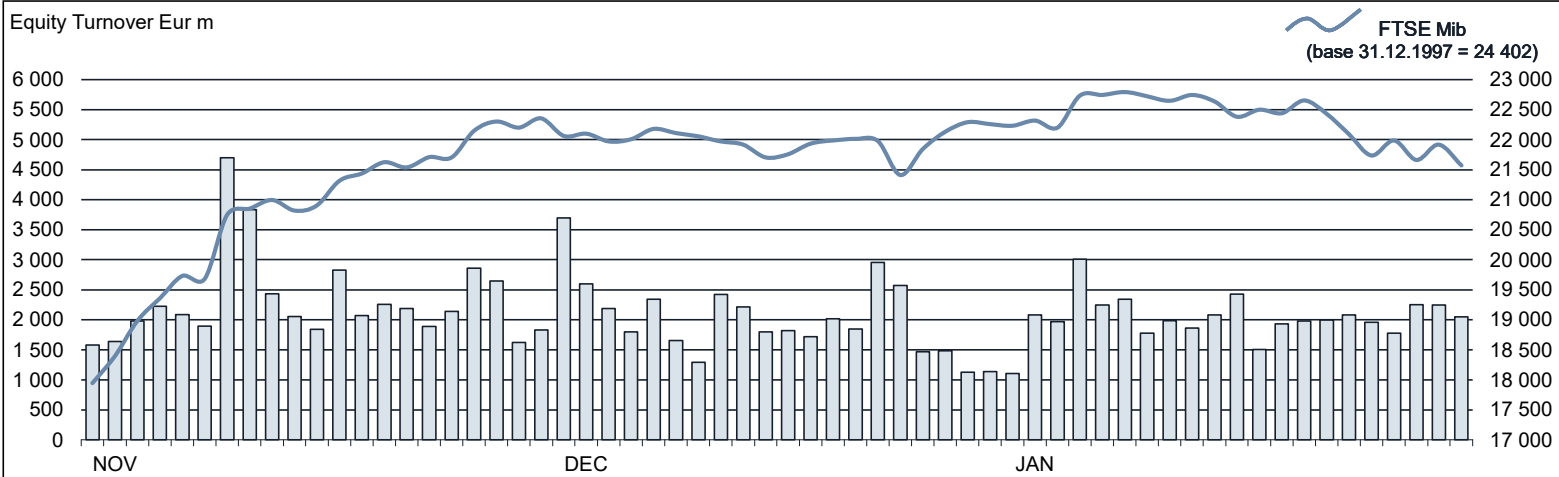




FTSE MIB Statistics

January 2021

EQUITY DAILY TURNOVER AND FTSE MIB EVOLUTION



FTSE MIB SHARES (BASKET UPDATED AS FROM 18.01.2021)

	29 JAN 2021	PRICE (eur)		CAPITALISATION (eur m)		TURNOVER (eur m)	
			Var % MoM	30 DEC 2020	29 JAN 2021	DEC 2020	JAN 2021
A2A	1.3502		3.3%	4 096.6	4 230.0	263.1	414.9
AMPLIFON	32.9231		-3.2%	7 698.1	7 453.4	351.8	328.9
ATLANTIA	13.0827		-10.6%	12 087.2	10 803.5	471.3	417.8
AZIMUT HOLDING	17.4302		-2.3%	2 554.9	2 497.0	277.0	347.1
BANCA GENERALI	25.5996		-6.3%	3 191.5	2 991.4	161.5	138.8
BANCA MEDIOLANUM	6.5667		-7.6%	5 269.0	4 868.4	160.1	235.9
BANCO BPM	1.8143		0.1%	2 746.3	2 749.0	531.0	563.5
BPER BANCA	1.5152		1.6%	2 108.6	2 141.4	458.6	553.1
BUZZI UNICEM	20.2656		3.9%	3 223.9	3 903.7	196.3	394.5
CAMPARI	8.8796		-5.3%	10 887.1	10 314.6	334.5	319.5
CNH INDUSTRIAL	10.5921		1.7%	14 206.1	14 451.9	751.8	785.2
DIASORIN	179.9013		5.9%	9 500.1	10 065.2	543.5	743.6
ENEL	8.2373		-0.6%	84 287.5	83 746.2	3 409.2	4 642.5
ENI	8.4026		-1.9%	30 893.0	30 296.5	2 834.1	3 018.9
EXOR	61.8201		-6.9%	16 001.4	14 898.7	444.1	507.8
FERRARI	171.4939		-9.6%	36 774.4	33 256.7	1 323.8	1 455.9
FINECOBANK	12.9243		-4.0%	8 204.2	7 878.1	646.7	557.3
GENERALI	14.1262		-1.1%	22 504.7	22 263.7	1 241.1	1 493.3
HERA	2.8838		-3.5%	4 453.2	4 295.5	200.5	305.4
INTERPUMP GROUP	37.5323		-6.9%	4 389.3	4 086.5	178.4	238.4
INTESA SANPAOLO	1.8052		-5.9%	37 269.1	35 075.9	4 575.6	3 771.1
INWIT	8.9110		-10.4%	9 547.0	8 556.3	436.8	359.1
ITALGAS	4.9748		-4.2%	4 201.7	4 025.3	204.6	186.1
LEONARDO	5.8295		-2.0%	3 437.6	3 370.3	1 055.9	953.3
MEDIOBANCA	7.3228		-3.4%	6 726.0	6 497.1	624.0	577.2
MONCLER	46.9707		-6.5%	12 975.6	12 135.0	854.2	674.6
NEXI	14.6890		-10.4%	10 290.7	9 221.4	620.3	584.5
PIRELLI & C	4.2978		-3.2%	4 441.4	4 297.8	376.8	318.9
POSTE ITALIANE	8.1222		-2.7%	10 899.7	10 608.5	414.0	419.5
PRYSMIAN	26.9025		-7.2%	7 777.1	7 213.7	459.9	891.4
RECORDATI	42.5198		-6.4%	9 504.9	8 892.0	259.7	308.0
SAIPEM	2.1875		-1.4%	2 243.0	2 211.5	443.9	615.7
SNAM	4.3518		-5.8%	15 519.8	14 625.9	813.1	866.1
STELLANTIS	12.5767		-2.3%	22 826.8	39 238.5	2 895.3	5 354.3
STMICROELECTRONICS	33.2601		9.1%	27 786.9	30 306.8	2 409.4	2 320.8
TELECOM ITALIA	0.3558		-5.9%	5 798.5	5 454.0	755.0	780.0
TENARIS	6.4750		-2.2%	7 817.6	7 644.0	513.3	689.8
TERNA	6.0316		-3.7%	12 582.8	12 123.5	569.9	641.0
UNICREDIT	7.5862		-1.3%	17 191.0	16 972.3	4 293.7	3 561.5
UNIPOL	3.6541		-6.5%	2 803.9	2 621.8	185.2	194.8

This document contains text, data, graphics, photographs, illustrations, artwork, names, logos, trade marks, service marks and information ("Information") connected with Borsa Italiana S.p.A. ("Borsa Italiana").

All reasonable efforts have been made to ensure that the Information in this document was correct at the time of publication. However, Borsa Italiana Spa accepts no liability for decisions taken, or systems-related or other work carried out by any party based on this document. The publication of this document does not represent solicitation, by Borsa Italiana, of public saving and is not to be considered as a recommendation by Borsa Italiana as to the suitability of the investment, if any, herein described.

©January 2021 Borsa Italiana S.p.A. All rights reserved.