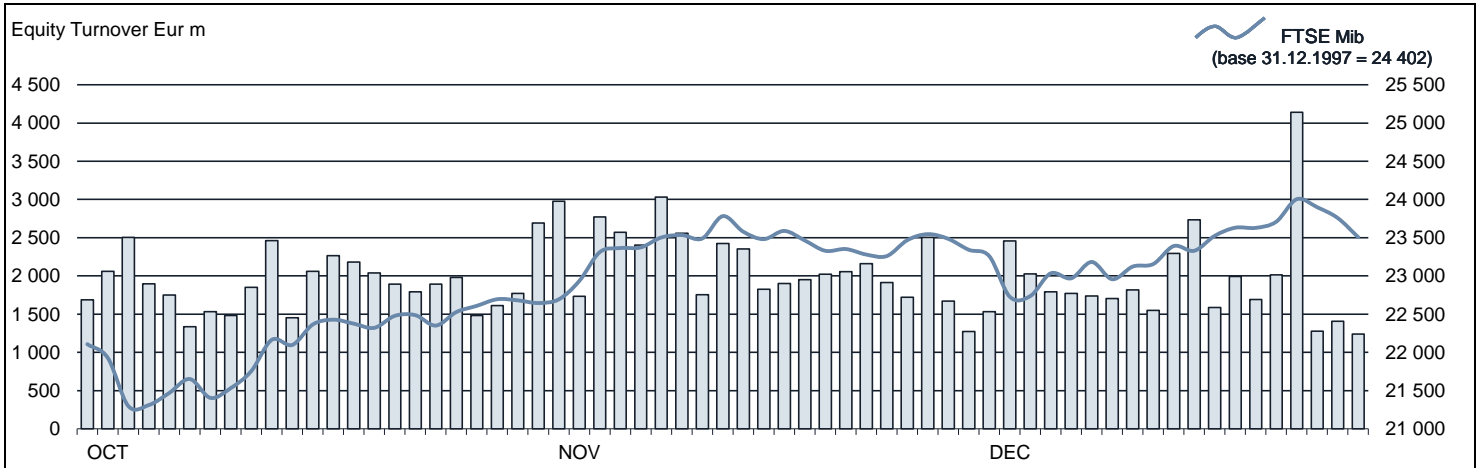




FTSE MIB Statistics

December 2019

EQUITY DAILY TURNOVER AND FTSE MIB EVOLUTION



FTSE MIB SHARES (BASKET UPDATED AS FROM 23.12.2019)

	PRICE (eur)			CAPITALISATION (eur m)		TURNOVER (eur m)	
	30 DEC 2019	Var % MoM	VAR % 2018 END	29 NOV 2019	30 DEC 2019	DEC 2019	JAN-DEC 2019
A2A	1.6759	-2.2%	6.5%	5 368.0	5 250.6	334.9	3 877.1
AMPLIFON	25.6829	-2.8%	82.8%	5 982.7	5 814.3	256.0	3 912.1
ATLANTIA	20.8046	3.7%	15.4%	16 572.6	17 180.1	892.9	9 129.4
AZIMUT HOLDING	21.4166	-6.8%	125.6%	3 291.1	3 068.0	537.0	7 572.4
BANCA GENERALI	29.1128	-3.6%	61.2%	3 529.2	3 401.9	309.9	2 802.6
BANCO BPM	2.0287	0.5%	3.2%	3 059.9	3 073.9	714.8	12 806.0
BPER BANCA	4.4886	2.5%	34.2%	2 252.1	2 336.9	245.2	3 794.9
BUZZI UNICEM	22.4157	-0.1%	49.4%	3 709.7	3 706.4	285.2	3 313.2
CAMPARI	8.1869	-1.5%	11.0%	9 659.1	9 509.9	274.2	4 974.0
CNH INDUSTRIAL	9.8597	1.6%	25.7%	13 234.6	13 452.6	484.7	7 545.5
DIASORIN	115.8882	-4.2%	64.2%	6 770.2	6 483.7	327.0	3 215.5
ENEL	7.0992	3.4%	40.3%	69 822.9	72 175.1	3 486.0	41 686.7
ENI	13.8984	1.0%	1.2%	50 007.0	50 509.4	2 869.4	41 372.6
EXOR	69.5601	0.0%	47.8%	16 760.5	16 764.0	417.1	5 360.4
FERRARI	149.0106	-3.0%	72.1%	29 796.1	28 896.7	966.7	15 659.4
FIAT CHRYSLER AUTOMOBILES	13.2674	-1.5%	15.7%	20 862.4	20 559.8	2 052.6	34 065.7
FINCOBANK	10.7372	-5.4%	22.8%	6 914.4	6 538.0	509.1	8 337.9
GENERALI	18.4547	-0.6%	26.5%	29 142.7	28 969.6	1 259.1	20 545.9
HERA	3.9090	-2.6%	46.2%	5 975.1	5 822.7	235.6	2 904.3
INTESA SANPAOLO	2.3568	2.3%	21.4%	40 332.2	41 267.6	3 758.7	61 728.6
ITALGAS	5.4746	-4.3%	9.7%	4 629.7	4 429.7	284.6	2 948.8
JUVENTUS FOOTBALL CLUB	1.2478	-2.1%	25.1%	1 394.7	1 257.5	204.0	5 106.1
LEONARDO	10.5083	-1.4%	37.3%	6 159.4	6 075.4	449.3	6 641.5
MEDIOBANCA	9.8578	-2.9%	33.7%	9 009.6	8 746.0	828.1	9 224.3
MONCLER	40.1786	0.2%	39.6%	10 342.8	10 365.3	1 355.9	9 634.9
NEXI	12.3572	16.1%	..	6 683.1	7 757.5	626.7	3 381.4
PIRELLI & C	5.1666	-0.3%	-8.2%	5 183.1	5 166.6	228.7	4 303.3
POSTE ITALIANE	10.1671	-4.2%	45.9%	13 863.1	13 279.3	452.4	6 438.3
PRYSMIAN	21.6075	4.3%	28.4%	5 554.6	5 793.9	513.4	7 930.8
RECORDATI	37.7436	-0.4%	23.1%	7 927.4	7 893.1	244.1	3 538.4
SAIPEM	4.3762	4.7%	34.7%	4 225.7	4 424.2	527.0	8 823.6
SALVATORE FERRAGAMO	18.7816	3.6%	4.9%	3 060.8	3 170.1	222.2	2 723.9
SNAM	4.6839	3.8%	22.6%	15 317.4	15 901.0	892.8	10 909.1
STMICROELECTRONICS	24.0260	7.3%	97.4%	20 395.5	21 892.0	1 481.4	19 087.2
TELECOM ITALIA	0.5583	-2.1%	15.1%	8 673.7	8 488.5	656.4	11 592.0
TENARIS	10.0452	3.8%	6.7%	11 423.2	11 858.7	765.0	10 460.2
TERNA	5.9668	2.5%	20.4%	11 703.5	11 993.2	612.4	8 864.8
UBI BANCA	2.9159	-1.2%	15.2%	3 375.9	3 336.7	433.0	6 707.9
UNICREDIT	13.0653	3.8%	32.9%	28 098.4	29 179.6	4 087.5	51 701.6
UNIPOL	5.1631	-3.1%	47.1%	3 822.3	3 704.4	187.3	2 711.8