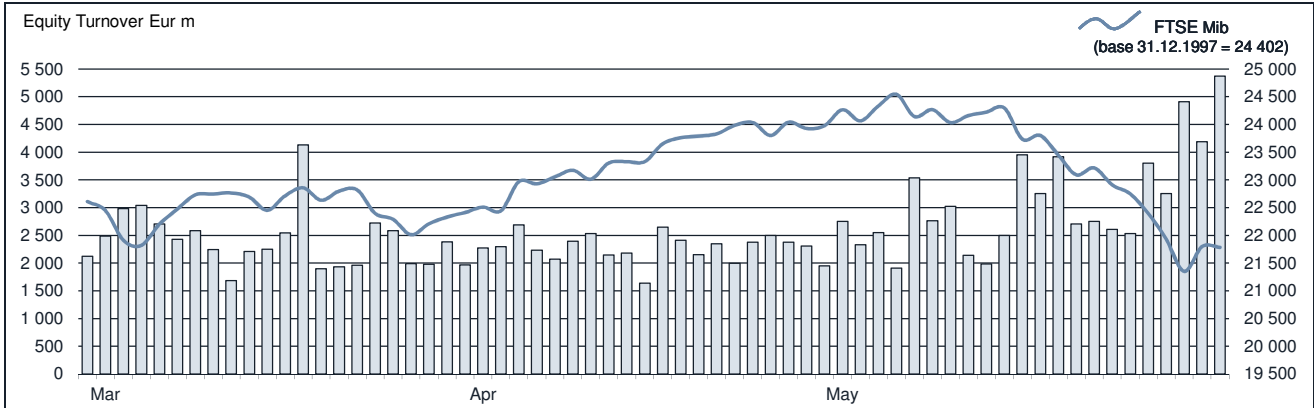




FTSE MIB Statistics

May 2018

EQUITY DAILY TURNOVER AND FTSE MIB EVOLUTION



FTSE MIB SHARES (BASKET UPDATED AS FROM 15.05.2018)

	PRICE (eur)			CAPITALISATION (eur m)		TURNOVER (eur m)	
	31 MAY 2018	VAR. % MOM	VAR. % 2017 END	30 APR 2018	31 MAY 2018	31 MAY 2018	JAN-MAY 2018
A2A	1.4447	-13.8%	-6.2%	5 247.7	4 526.1	532.4	1 859.9
ATLANTIA	24.8654	-9.7%	-5.9%	22 739.3	20 533.5	1 445.5	5 350.0
AZIMUT HOLDING	14.0572	-19.4%	-12.0%	2 498.9	2 013.8	1 048.1	3 274.7
BANCA GENERALI	20.7832	-22.9%	-25.5%	3 148.6	2 428.6	303.0	1 167.3
BANCA MEDIOLANUM	6.0239	-9.5%	-16.9%	4 925.8	4 459.2	336.4	1 059.6
BANCO BPM	2.2200	-26.5%	-15.7%	4 578.8	3 363.6	2 053.8	7 839.5
BPER BANCA	4.1166	-13.9%	-2.8%	2 300.5	1 981.4	846.9	2 678.7
BREMO	12.2380	0.0%	-4.0%	4 088.6	4 086.5	311.9	1 272.3
BUZZI UNICEM	20.6207	-1.6%	-8.7%	3 465.3	3 409.6	538.2	2 051.4
CAMPARI	6.3934	2.8%	-1.0%	7 224.2	7 426.6	301.1	1 561.9
CNH INDUSTRIAL	10.0617	-1.4%	-10.0%	13 926.2	13 728.2	867.2	4 351.0
ENEL	4.7022	-10.5%	-8.8%	53 411.1	47 805.9	4 488.7	17 064.4
ENI	15.5209	-3.8%	11.9%	58 645.4	56 405.9	6 129.6	24 464.6
EXOR	61.9997	0.9%	21.5%	14 807.3	14 941.9	612.9	3 162.5
FERRARI	111.6942	10.0%	26.9%	19 685.8	21 660.1	1 932.9	7 096.1
FIAT CHRYSLER AUTOMOBILES	19.3667	4.0%	29.0%	28 860.0	30 011.5	4 449.4	26 673.8
FINECOBANK	8.5779	-13.0%	-0.1%	5 999.1	5 218.8	617.5	2 478.9
GENERALI	14.5289	-13.2%	-4.5%	26 212.0	22 740.1	2 879.7	11 035.5
INTESA SANPAOLO	2.5265	-20.1%	-8.8%	50 148.0	40 069.5	9 382.0	33 108.6
ITALGAS	4.4527	-16.7%	-12.8%	4 325.6	3 602.8	366.3	1 339.2
LEONARDO	8.7077	-9.6%	-12.3%	5 567.1	5 034.4	1 030.5	5 137.2
LUXOTTICA GROUP	53.4036	3.5%	4.1%	25 028.5	25 904.2	597.3	2 989.7
MEDIASET	2.8442	-14.0%	-12.2%	3 904.5	3 359.7	340.0	1 802.1
MEDIABANCA	8.1468	-19.2%	-14.0%	8 939.1	7 220.2	1 231.5	4 449.9
MONCLER	39.2431	5.0%	49.6%	9 549.2	10 030.4	2 287.9	5 357.8
PIRELLI & C	7.3222	1.5%	1.2%	7 211.5	7 322.2	911.8	2 298.0
POSTE ITALIANE	7.4264	-8.2%	18.0%	10 562.0	9 699.7	1 146.1	3 519.8
PRYSMIAN	23.7983	-2.4%	-12.8%	5 612.4	5 604.3	790.9	2 782.2
RECORDATI	31.7050	7.0%	-14.8%	6 196.1	6 630.3	617.9	2 389.8
SAIPEM	3.6708	16.1%	-4.1%	3 197.6	3 711.1	1 275.5	4 322.5
SALVATORE FERRAGAMO	24.5584	0.7%	10.8%	4 118.3	4 145.2	280.3	1 353.7
SNAM	3.5262	-11.4%	-13.7%	13 925.0	12 232.4	1 252.3	5 066.2
STMICROELECTRONICS	20.3858	12.9%	11.2%	16 457.3	18 574.2	1 705.4	8 053.9
TELECOM ITALIA	0.6933	-15.4%	-4.2%	12 459.6	10 540.6	2 601.3	11 236.8
TENARIS	15.6337	-0.4%	18.6%	18 535.8	18 456.1	1 416.5	5 724.9
TERNA	4.5470	-8.7%	-8.8%	10 011.6	9 139.4	915.8	3 745.5
UBI BANCA	3.2505	-23.9%	-11.7%	4 890.3	3 719.5	1 349.4	4 915.2
UNICREDIT	14.2972	-20.3%	-8.9%	40 022.0	31 885.2	8 339.7	29 749.2
UNIPOL	3.7014	-16.9%	-5.7%	3 195.7	2 655.7	321.6	1 473.8
UNIPOLSAI	1.8939	-15.0%	-3.1%	6 305.7	5 359.2	873.9	2 081.9

