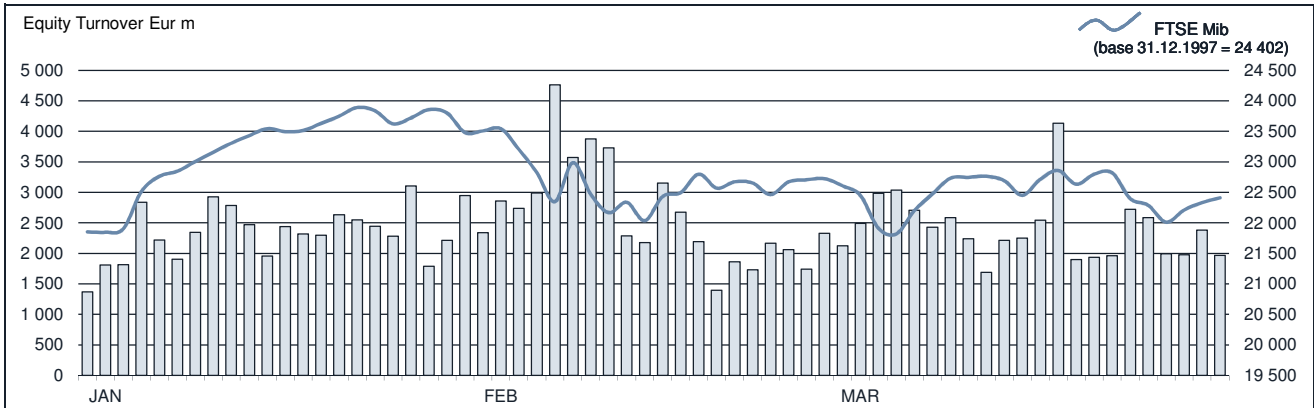




FTSE MIB Statistics

March 2018

EQUITY DAILY TURNOVER AND FTSE MIB EVOLUTION



FTSE MIB SHARES (BASKET UPDATED AS FROM 19.03.2018)

	PRICE (eur)			CAPITALISATION (eur m)		TURNOVER (eur m)	
	29 MAR 2018	VAR. % MOM	VAR. % 2017 END	28 FEB 2018	29 MAR 2018	29 MAR 2018	JAN-MAR 2018
A2A	1.5516	6.4%	0.8%	4 566.8	4 861.0	348.1	997.5
ATLANTIA	25.2136	-0.8%	-4.6%	20 984.3	20 821.0	1 346.8	3 099.6
AZIMUT HOLDING	17.4714	-2.6%	9.4%	2 570.0	2 502.9	519.9	1 759.9
BANCA GENERALI	26.2904	-3.9%	-5.8%	3 198.0	3 072.1	219.4	686.4
BANCO BPM	2.8302	-9.5%	7.5%	4 736.0	4 288.3	1 496.5	4 809.1
BPER BANCA	4.5407	-7.2%	7.3%	2 355.1	2 185.5	461.8	1 505.9
BREMBIO	12.4753	8.0%	-2.1%	3 857.7	4 165.8	291.9	792.9
BUZZI UNICEM	19.0031	-6.8%	-15.9%	3 370.3	3 142.1	424.4	1 202.2
CAMPARI	6.1647	4.3%	-4.5%	6 865.6	7 161.0	315.5	1 010.3
CNH INDUSTRIAL	10.0376	-10.3%	-10.2%	15 269.1	13 695.3	910.8	2 590.0
ENEL	4.9806	3.7%	-3.4%	48 810.8	50 636.3	3 239.4	10 374.7
ENI	14.2823	3.9%	3.0%	49 959.3	51 904.4	4 747.4	13 127.3
EXOR	57.7320	-3.9%	13.1%	14 478.9	13 913.4	639.5	2 058.0
FERRARI	97.9457	-4.9%	11.3%	19 971.3	18 994.0	1 338.8	4 152.1
FIAT CHRYSLER AUTOMOBILES	16.5188	-6.4%	10.0%	27 187.8	25 440.4	4 107.4	17 094.9
FINCOBANK	9.7982	-3.1%	14.2%	6 149.6	5 959.3	456.3	1 482.5
GENERALI	15.6749	1.5%	3.0%	24 122.4	24 481.2	2 214.3	6 337.3
INTESA SANPAOLO	2.9617	-4.6%	6.9%	49 254.6	46 971.5	6 091.3	19 102.9
ITALGAS	4.8534	9.6%	-5.0%	3 582.9	3 927.0	292.7	731.4
LEONARDO	9.4433	6.3%	-4.9%	5 134.0	5 459.6	937.0	3 339.7
LUXOTTICA GROUP	50.2401	1.6%	-2.0%	23 983.4	24 368.7	850.1	1 901.3
MEDIASET	3.0947	-3.3%	-4.5%	3 779.8	3 655.6	411.3	1 049.0
MEDIOBANCA	9.5519	-3.3%	0.8%	8 741.0	8 462.8	840.8	2 558.5
MONCLER	30.8652	7.4%	17.7%	7 320.7	7 863.8	743.8	1 926.5
PIRELLI & C	7.1915	-2.2%	-0.6%	7 349.7	7 191.5	325.9	984.0
POSTE ITALIANE	7.3957	4.9%	17.5%	9 205.3	9 659.6	730.8	1 874.2
PRYSMIAN	25.5450	-1.5%	-6.4%	5 699.6	5 879.5	441.2	1 480.2
RECORDATI	29.6184	0.3%	-20.4%	6 175.8	6 193.9	599.2	1 453.4
SAIPEM	3.1812	-6.5%	-16.9%	3 439.1	3 216.1	620.4	2 233.3
SALVATORE FERRAGAMO	22.4602	-3.5%	1.3%	3 927.1	3 791.1	257.7	785.4
SNAM	3.7286	1.2%	-8.7%	12 900.5	13 052.5	1 020.2	3 046.6
STMICROELECTRONICS	17.9926	-4.6%	-1.9%	17 191.2	16 393.4	1 597.3	4 517.4
TELECOM ITALIA	0.7730	4.9%	6.8%	11 208.2	11 752.1	2 723.2	5 431.7
TENARIS	13.8130	-3.0%	4.8%	16 804.4	16 306.7	1 223.5	3 177.3
TERNA	4.7452	3.7%	-2.7%	9 193.8	9 537.9	827.1	2 211.1
UBI BANCA	3.7382	-6.3%	1.6%	4 564.9	4 277.6	748.5	2 912.7
UNICREDIT	16.9735	-3.0%	8.1%	38 930.9	37 794.2	5 156.8	17 237.5
UNIPOL	3.9861	-3.1%	1.5%	2 952.1	2 859.9	239.7	891.6
UNIPOLSAI	1.9356	-2.5%	-1.0%	5 615.3	5 477.3	255.7	817.7
YOOX NET-A-PORTER GROUP	37.8068	0.0%	28.4%	3 475.6	3 477.0	715.1	2 845.2

Markets Analysis  
 Piazza degli Affari, 6 - 20123 Milano  
 T +39 02 724261 | Fax +39 02 8646.4323  
 e-mail: markets\_analysis@borsaitaliana.it  
 www.borsaitaliana.it

This document contains text, data, graphics, photographs, illustrations, artwork, names, logos, trade marks, service marks and information ("Information") connected with Borsa Italiana S.p.A. ("Borsa Italiana"). All reasonable efforts have been made to ensure that the information in this document was correct at the time of publication. However, Borsa Italiana Spa accepts no liability for decisions taken, or systems-related or other work carried out by any party based on this document. The publication of this document does not represent solicitation, by Borsa Italiana, of public saving and is not to be considered as a recommendation by Borsa Italiana as to the suitability of the investment, if any, herein described.

© March 2018 Borsa Italiana S.p.A. All rights reserved.