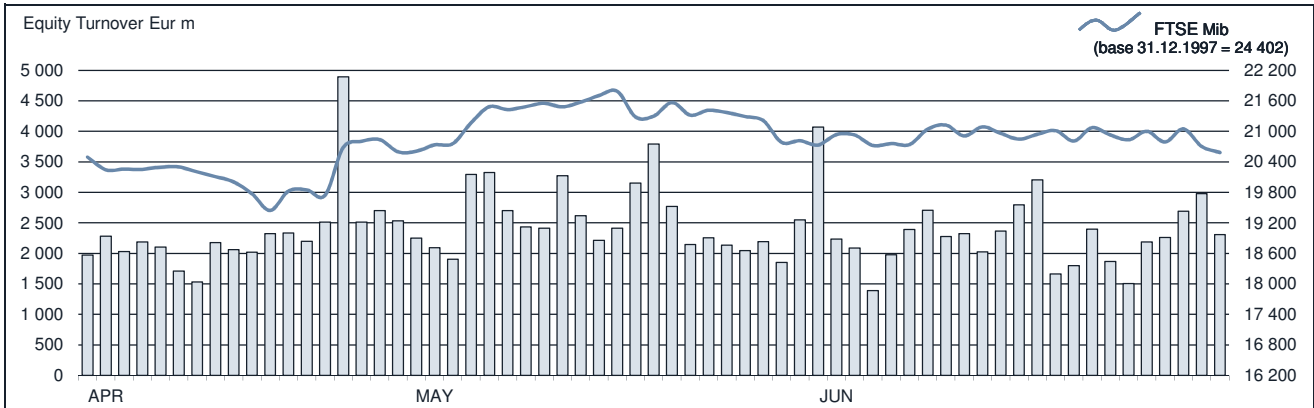




FTSE MIB Statistics

June 2017

EQUITY DAILY TURNOVER AND FTSE MIB EVOLUTION



FTSE MIB SHARES (BASKET UPDATED AS FROM 19.06.2017)

	PRICE (eur)			CAPITALISATION (eur m)		TURNOVER (eur m)	
	30 JUN 2017	VAR. % MOM	VAR. % 2016 END	31 MAY 2017	30 JUN 2017	JUN 2017	JAN-JUN 2017
A2A	1.4550	-2.0%	18.5%	4 651.8	4 558.3	300.5	1 863.5
ATLANTIA	24.6995	-0.5%	10.7%	20 494.0	20 396.4	1 417.2	7 340.5
AZIMUT HOLDING	17.7167	-2.7%	11.8%	2 609.4	2 538.0	363.8	3 206.6
BANCA GENERALI	26.4033	2.7%	16.5%	2 999.4	3 084.8	215.1	1 300.0
BANCA MEDIOLANUM	7.2715	-1.9%	6.1%	5 480.5	5 379.4	181.3	1 497.3
BANCO BPM	2.9447	5.2%	..	4 241.1	4 461.7	1 517.3	10 372.6
BPER BANCA	4.4393	1.4%	-12.7%	2 106.5	2 136.7	393.4	3 299.9
BREMO	12.7916	-10.3%	11.0%	4 764.4	4 271.4	290.0	1 552.1
BUZZI UNICEM	22.1196	-4.4%	-2.2%	3 824.8	3 657.5	323.2	2 324.7
CAMPARI	6.1969	-1.5%	33.0%	7 308.9	7 198.4	246.8	1 305.5
CNH INDUSTRIAL	9.9287	-0.3%	20.4%	13 577.4	13 532.6	774.9	4 246.1
ENEL	4.7132	-1.0%	13.0%	48 405.8	47 917.3	3 870.3	20 532.5
ENI	13.1960	-6.8%	-14.5%	51 461.9	47 956.6	4 763.5	28 069.6
EXOR	47.7763	-3.9%	16.7%	11 983.1	11 514.1	412.8	2 748.0
FERRARI	75.4818	-1.8%	36.4%	14 901.9	14 637.7	1 127.8	5 301.2
FIAT CHRYSLER AUTOMOBILES	9.2931	-0.9%	7.0%	14 412.1	14 286.2	2 984.4	23 126.2
FINECOBANK	7.0143	5.3%	30.9%	4 049.6	4 262.7	320.6	1 795.2
GENERALI	14.4815	3.3%	2.1%	21 892.9	22 617.4	2 313.9	17 238.1
INTESA SANPAOLO	2.7903	8.9%	15.6%	40 623.6	44 254.3	7 725.5	41 645.7
ITALGAS	4.4460	-5.1%	19.2%	3 789.9	3 597.4	269.2	1 429.1
LEONARDO	14.5372	-7.6%	9.6%	9 093.2	8 404.7	578.2	4 351.6
LUXOTTICA GROUP	50.9195	-5.6%	-0.7%	26 121.0	24 673.4	534.2	4 213.1
MEDIASET	3.4520	-2.8%	-16.1%	4 193.3	4 077.6	222.7	2 689.1
MEDIOBANCA	8.6988	2.3%	11.7%	7 459.7	7 665.5	676.2	5 058.7
MONCLER	20.5687	-5.3%	24.6%	5 511.3	5 218.7	362.9	2 736.6
POSTE ITALIANE	6.0110	-4.0%	-5.0%	8 179.4	7 851.0	665.6	2 866.4
PRYSMIAN	25.7368	3.6%	5.3%	5 383.2	5 577.7	666.0	3 540.2
RECORDATI	35.2801	-1.4%	31.1%	7 485.4	7 378.0	452.8	2 455.6
SAIPEM	3.2415	-10.3%	-39.5%	3 652.2	3 277.0	665.1	4 658.6
SALVATORE FERRAGAMO	23.4028	-5.5%	3.6%	4 181.8	3 950.2	326.4	2 237.2
SNAM	3.8548	-5.6%	-1.7%	14 290.8	13 494.3	816.7	5 645.8
STMICROELECTRONICS	12.6460	-14.2%	17.3%	13 432.7	11 521.9	1 849.8	8 838.9
TELECOM ITALIA	0.8102	-2.6%	-3.6%	12 642.3	12 317.0	1 296.3	8 968.6
TENARIS	13.5877	0.5%	-20.1%	15 963.7	16 040.8	983.9	5 758.6
TERNA	4.7601	-5.3%	9.1%	10 105.1	9 567.8	770.5	4 086.6
UBI BANCA	3.8510	18.7%	55.0%	3 326.8	3 763.3	1 228.2	6 628.7
UNICREDIT	16.5246	5.5%	20.6%	34 864.6	36 778.7	6 595.4	42 095.6
UNIPOL	3.8634	3.9%	13.0%	2 668.9	2 771.9	233.5	1 605.8
UNIPOLSAI	1.9331	-3.9%	-5.2%	5 694.2	5 470.0	274.9	2 000.0
YOOX NET-A-PORTER GROUP	24.2053	-3.6%	-10.4%	2 284.7	2 202.4	425.0	2 586.8

Markets Analysis  
 Piazza degli Affari, 6 - 20123 Milano  
 T +39 02 724261 | Fax +39 02 8646.4323  
 e-mail: markets\_analysis@borsaitaliana.it  
 www.borsaitaliana.it

This document contains text, data, graphics, photographs, illustrations, artwork, names, logos, trade marks, service marks and information ("Information") connected with Borsa Italiana S.p.A. ("Borsa Italiana"). All reasonable efforts have been made to ensure that the information in this document was correct at the time of publication. However, Borsa Italiana Spa accepts no liability for decisions taken, or systems-related or other work carried out by any party based on this document. The publication of this document does not represent solicitation, by Borsa Italiana, of public saving and is not to be considered as a recommendation by Borsa Italiana as to the suitability of the investment, if any, herein described.

© June 2017 Borsa Italiana S.p.A. All rights reserved.