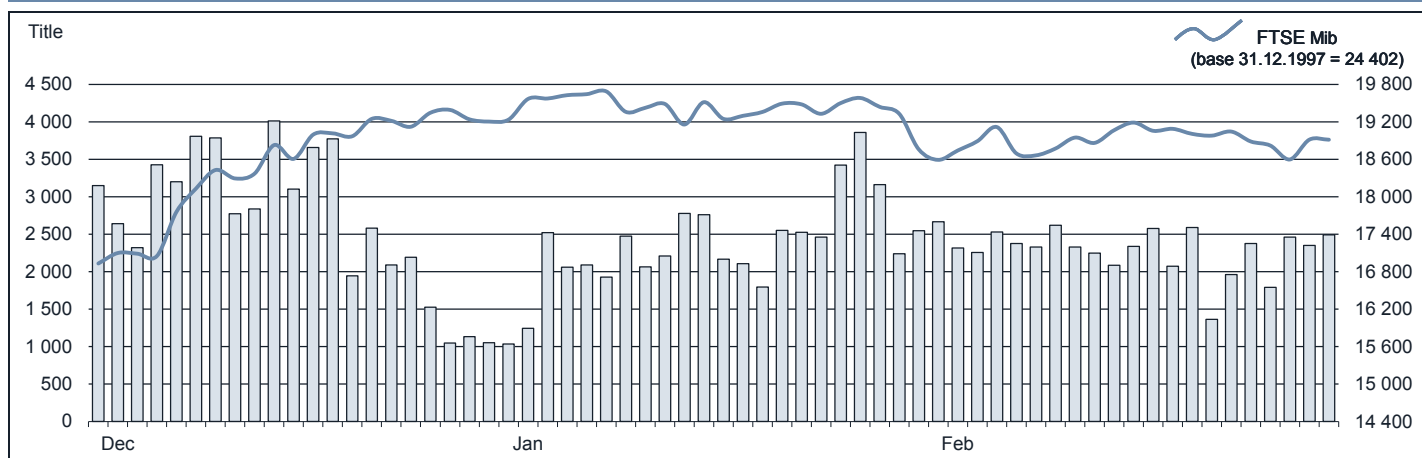




FTSE MIB Statistics

February 2017

EQUITY DAILY TURNOVER AND FTSE MIB EVOLUTION



FTSE MIB SHARES (BASKET UPDATED AS FROM 06.02.2017)

	28 FEB 2017	PRICE (eur)		CAPITALISATION (eur m)		TURNOVER (eur m)	
		VAR. % MOM	VAR. % 2016 END	31 JAN 2017	28 FEB 2017	FEB 2017	JAN-FEB 2017
A2A	1.3135	6.2%	6.9%	3 873.8	4 114.9	251.3	552.7
ATLANTIA	22.1198	5.1%	-0.9%	17 383.5	18 266.2	780.6	1 761.6
AZIMUT HOLDING	15.9183	-5.3%	0.4%	2 407.8	2 280.4	527.8	1 077.8
BANCA MEDIOLANUM	6.2198	-11.9%	-9.3%	5 221.5	4 598.0	318.5	568.5
BANCA MONTE PASCHI SIENA
BANCO BPM	2.3450	-13.3%	..	4 095.8	3 553.1	1 357.2	3 679.1
BPER BANCA	4.3065	-19.5%	-15.3%	2 573.4	2 072.8	546.1	1 163.8
BREMBO	63.6071	6.3%	10.4%	3 995.3	4 248.0	164.8	365.9
BUZZI UNICEM	23.4870	2.1%	3.8%	3 804.6	3 883.6	354.4	759.6
CAMPARI	9.6107	3.2%	3.1%	5 407.9	5 581.9	171.0	375.7
CNH INDUSTRIAL	8.7599	4.9%	6.2%	11 384.6	11 939.0	710.0	1 381.0
ENEL	4.0601	5.0%	-2.7%	39 298.3	41 277.3	2 952.6	6 493.9
ENI	14.5595	1.4%	-5.7%	52 172.4	52 911.8	4 092.9	8 517.5
EXOR	44.9164	6.0%	9.7%	10 216.2	10 824.9	393.1	953.3
FERRARI	61.6593	6.6%	11.4%	11 214.0	11 957.2	628.6	1 226.7
FIAT CHRYSLER AUTOMOBILES	10.4191	2.4%	19.9%	13 076.5	13 387.7	3 354.6	9 800.5
FINCOBANK	5.3788	-2.8%	0.3%	3 359.3	3 268.7	239.6	519.2
GENERALI	13.5950	-8.5%	-4.1%	23 182.4	21 206.6	2 975.5	7 306.2
INTESA SANPAOLO	2.2031	0.9%	-8.7%	34 634.8	34 941.3	5 069.9	11 379.1
ITALGAS	3.7716	7.2%	1.1%	2 847.8	3 051.7	167.0	401.4
LEONARDO	13.0131	9.0%	-1.9%	6 901.8	7 523.5	703.1	1 285.0
LUXOTTICA GROUP	49.6252	-0.6%	-3.2%	24 180.5	24 031.7	539.0	2 047.0
MEDIASET	3.8932	-2.2%	-5.4%	4 701.5	4 598.8	314.7	1 295.7
MEDIOBANCA	7.5269	-6.4%	-3.4%	7 024.3	6 571.2	835.6	1 903.2
MONCLER	17.9367	0.0%	8.6%	4 486.7	4 488.3	286.3	678.2
POSTE ITALIANE	6.0388	3.2%	-4.5%	7 645.1	7 887.3	348.8	704.2
PRYSMIAN	24.0564	-0.6%	-1.6%	5 243.1	5 213.5	521.0	1 039.8
RECORDATI	30.0385	13.3%	11.6%	5 545.9	6 281.8	285.4	513.3
SAIPEM	0.4275	-9.8%	-20.2%	4 793.3	4 322.1	729.2	1 764.9
SALVATORE FERRAGAMO	26.9907	9.6%	19.5%	4 157.5	4 555.8	409.7	871.2
SNAM	3.7716	6.8%	-3.8%	12 361.1	13 202.9	824.3	1 687.5
STMICROELECTRONICS	14.3756	16.9%	33.4%	11 204.3	13 097.4	1 531.6	2 749.5
TELECOM ITALIA	0.7678	-3.3%	-8.7%	12 077.1	11 673.3	1 504.6	3 043.1
TENARIS	15.5957	-3.2%	-8.3%	19 027.7	18 411.3	775.6	1 551.1
TERNA	4.3814	7.7%	0.4%	8 174.7	8 806.6	702.5	1 361.0
UBI BANCA	2.9324	-9.6%	12.5%	3 168.4	2 865.7	812.4	2 339.1
UNICREDIT	12.5784	-2.7%	-8.2%	15 930.0	7 770.7	8 239.6	13 865.8
UNIPOL	3.6017	4.5%	5.3%	2 472.6	2 584.1	278.0	575.0
UNIPOLSAI	2.0114	3.1%	-1.4%	5 518.2	5 691.7	375.0	699.6
YOOX NET-A-PORTER GROUP	22.5782	-4.1%	-16.5%	2 141.1	2 052.7	380.8	824.9

* Banca Monte Paschi Siena suspended on 23.12.2016

Markets Analysis
Piazza degli Affari, 6 - 20123 Milano
T +39 02 724261 | Fax +39 02 8646.4323
e-mail: markets_analysis@borsaitaliana.it
www.borsaitaliana.it

This document contains text, data, graphics, photographs, illustrations, artwork, names, logos, trade marks, service marks and information ("Information") connected with Borsa Italiana S.p.A. ("Borsa Italiana").

All reasonable efforts have been made to ensure that the Information in this document was correct at the time of publication. However, Borsa Italiana Spa accepts no liability for decisions taken, or systems-related or other work carried out by any party based on this document. The publication of this document does not represent solicitation, by Borsa Italiana, of public saving and is not to be considered as a recommendation by Borsa Italiana as to the suitability of the investment, if any, herein described.

© February 2017 Borsa Italiana S.p.A. All rights reserved.

