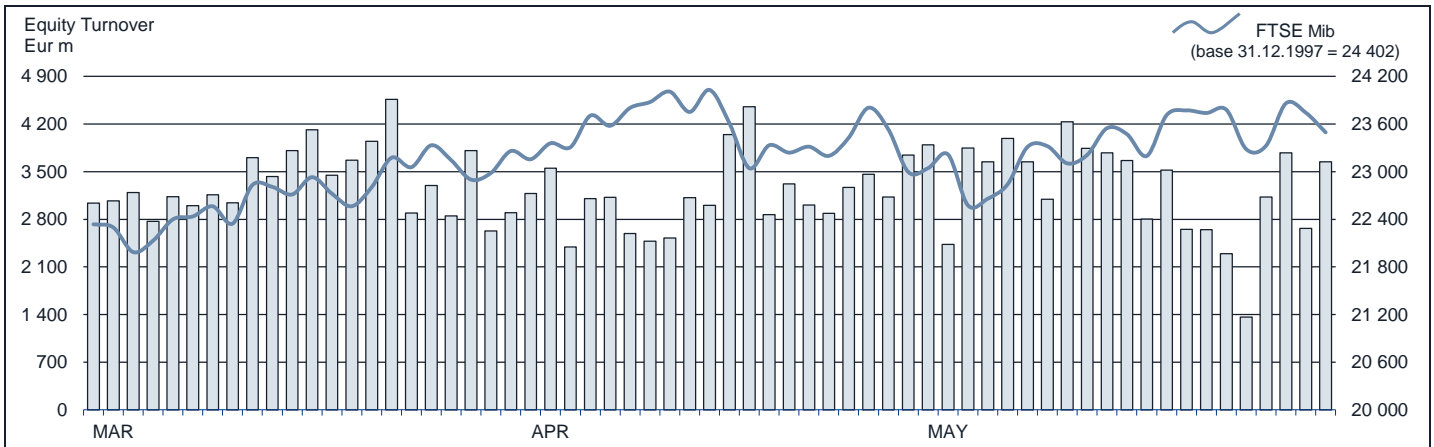




FTSE MIB Statistics

May 2015

EQUITY DAILY TURNOVER AND FTSE MIB EVOLUTION



FTSE MIB SHARES (BASKET UPDATED AS FROM 25.05.2015)

	29 MAY 2015	PRICE (eur)		CAPITALISATION (eur m)		TURNOVER (eur m)	
		VAR. % MOM	VAR. % 2014 END	30 APR 2015	29 MAY 2015	MAY 2015	JAN-MAY 2015
A2A	1.1318	9.7%	35.2%	3 232.4	3 545.9	488.1	2 048.2
ANSALDO STS	9.4169	-0.6%	12.7%	1 894.0	1 883.4	372.9	1 447.6
ATLANTIA	23.5825	-6.1%	21.6%	20 734.6	19 474.1	1 345.1	5 632.9
AUTOGRILL	8.4583	-0.7%	35.2%	2 166.3	2 151.8	336.9	1 658.6
AZIMUT HOLDING	26.1967	2.6%	48.7%	3 745.7	3 752.8	1 399.8	3 467.4
BANCA MONTE PASCHI SIENA	1.8374	-17.3%	-4.2%	2 793.4	470.0	1 619.6	7 132.7
BANCA POP EMILIA ROMAGNA	7.8802	8.4%	44.1%	3 499.3	3 792.8	631.2	4 649.5
BANCA POPOLARE MILANO	0.9460	3.2%	74.2%	4 027.3	4 154.6	1 054.9	8 386.4
BANCO POPOLARE	15.4896	10.0%	53.9%	5 100.2	5 610.0	984.7	6 446.5
BUZZI UNICEM	14.0351	-2.3%	33.5%	2 374.2	2 320.7	294.6	1 796.0
CAMPARI	7.0039	0.3%	36.0%	4 055.5	4 067.9	272.3	1 421.2
CNH INDUSTRIAL	8.1326	4.1%	21.0%	10 626.7	11 064.3	566.8	3 577.8
ENEL	4.4510	5.2%	20.0%	39 793.6	41 854.0	4 150.9	21 586.5
ENEL GREEN POWER	1.7285	-0.6%	-0.9%	8 695.2	8 642.4	403.3	1 990.9
ENI	16.5322	-3.8%	13.5%	62 439.8	60 081.0	7 837.5	35 898.2
EXOR	45.3908	10.2%	33.0%	10 144.3	11 176.6	416.9	2 116.4
FIAT CHRYSLER AUTOMOBILES	14.6620	8.7%	51.9%	17 328.2	18 839.5	4 364.6	23 665.0
FINMECCANICA	12.2099	8.0%	57.4%	6 533.7	7 059.2	747.7	4 397.9
GENERALI	17.7731	2.3%	4.3%	27 050.6	27 670.5	3 966.4	15 948.1
INTESA SANPAOLO	3.3234	10.4%	36.3%	47 693.9	52 662.7	9 478.1	44 795.1
LUXOTTICA GROUP	61.2383	6.0%	36.7%	28 211.0	29 524.0	948.7	4 386.3
MEDIASET	4.4441	-2.8%	28.6%	5 403.1	5 249.5	986.5	5 717.0
MEDIOBANCA	9.4094	8.7%	39.5%	7 489.0	8 141.4	904.7	4 200.1
MEDIOLANUM	7.8262	2.4%	48.1%	5 637.7	5 772.7	443.4	1 788.6
MONCLER	17.4004	10.1%	57.5%	3 949.8	4 352.0	673.4	2 220.4
PIRELLI & C	15.4739	0.4%	38.4%	7 332.0	7 361.5	899.7	5 189.4
PRYSMIAN	20.5459	12.3%	35.5%	3 966.3	4 452.7	751.1	2 979.0
SAIPEM	11.6176	-2.8%	32.4%	5 273.7	5 126.8	1 273.8	8 948.9
SALVATORE FERRAGAMO	28.8981	3.8%	41.8%	4 688.1	4 866.7	398.2	2 044.4
SNAM	4.5090	-3.3%	9.6%	16 326.3	15 784.4	1 618.4	6 146.2
STMICROELECTRONICS	7.7676	6.2%	25.5%	6 658.5	7 074.3	936.9	4 568.5
TELECOM ITALIA	1.1216	6.0%	26.6%	14 248.5	15 109.8	2 243.2	11 620.2
TENARIS	13.1814	-4.0%	6.7%	16 203.5	15 561.1	858.9	5 139.9
TERNA	4.3461	3.4%	14.9%	8 451.8	8 735.7	685.0	3 307.4
TOD'S	84.4106	3.0%	17.4%	2 507.6	2 583.8	309.3	1 786.6
UBI BANCA	7.5359	6.5%	26.3%	6 379.3	6 795.5	1 229.5	6 443.9
UNICREDIT	6.4168	0.3%	19.9%	37 615.5	37 728.5	7 487.2	43 422.3
UNIPOLSAI	2.4791	-0.4%	10.3%	5 664.8	5 641.6	509.3	2 511.4
WORLD DUTY FREE	10.1035	0.9%	27.3%	2 547.8	2 571.5	241.5	2 736.1
YOOX	30.0945	4.4%	62.8%	1 790.2	1 868.8	548.0	3 727.2

Markets Analysis
 Piazza degli Affari, 6 - 20123 Milano
 T +39 02 724261 | Fax +39 02 8646.4323
 e-mail: markets_analysis@borsaitaliana.it
 www.borsaitaliana.it

This document contains text, data, graphics, photographs, illustrations, artwork, names, logos, trade marks, service marks and information ("Information") connected with Borsa Italiana S.p.A. ("Borsa Italiana").

All reasonable efforts have been made to ensure that the Information in this document was correct at the time of publication. However, Borsa Italiana Spa accepts no liability for decisions taken, or systems-related or other work carried out by any party based on this document. The publication of this document does not represent solicitation, by Borsa Italiana, of public saving and is not to be considered as a recommendation by Borsa Italiana as to the suitability of the investment, if any, herein described.

© May 2015 Borsa Italiana S.p.A. All rights reserved.

