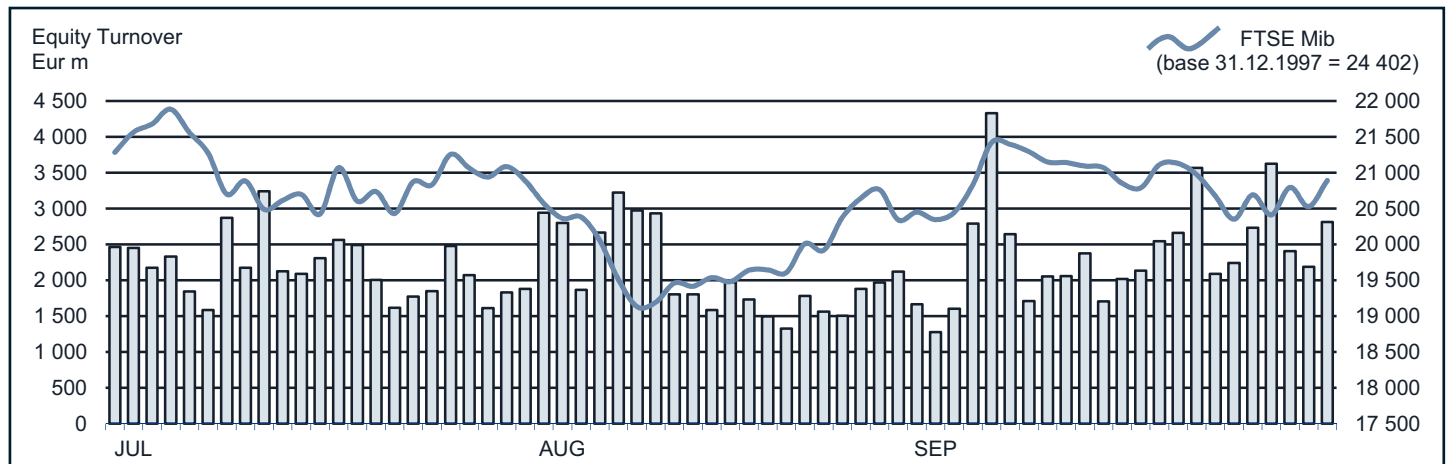




### EQUITY DAILY TURNOVER AND FTSE MIB EVOLUTION



### FTSE MIB SHARES (BASKET UPDATED AS FROM 22.09.2014)

|                              | PRICE (eur) |           |                 | CAPITALISATION (eur m) |             | TURNOVER (eur m) |              |
|------------------------------|-------------|-----------|-----------------|------------------------|-------------|------------------|--------------|
|                              | 30 SEP 2014 | VAR % MOM | VAR. % 2013 END | 29 AUG 2014            | 30 SEP 2014 | SEP 2014         | JAN-SEP 2014 |
| A2A                          | 0.7792      | -6.2%     | -8.5%           | 2 602.8                | 2 441.2     | 256.4            | 2 561.3      |
| Atlantia                     | 19.4091     | 0.8%      | 19.3%           | 15 907.0               | 16 027.7    | 841.3            | 8 903.2      |
| Autogrill                    | 6.2555      | -2.0%     | 2.6%            | 1 623.4                | 1 591.4     | 181.4            | 1 817.4      |
| Azimut Holding               | 19.9450     | 1.5%      | 3.8%            | 2 814.3                | 2 857.2     | 452.7            | 4 164.4      |
| Banca Monte Paschi Siena     | 1.0327      | -9.2%     | -4.4%           | 5 821.1                | 5 284.0     | 1 740.1          | 16 352.3     |
| Banca Pop Emilia Romagna     | 6.1853      | -4.4%     | -1.7%           | 3 103.1                | 2 966.9     | 496.1            | 4 838.3      |
| Banca Popolare Milano        | 0.6335      | 4.4%      | 58.5%           | 2 664.0                | 2 782.0     | 999.7            | 10 616.2     |
| Banco Popolare               | 11.4909     | -3.1%     | 8.5%            | 4 295.1                | 4 161.8     | 1 140.1          | 12 697.0     |
| Buzzi Unicem                 | 10.6644     | -8.0%     | -18.4%          | 1 917.6                | 1 763.4     | 216.7            | 1 994.2      |
| Campari                      | 5.7104      | -2.4%     | -5.7%           | 3 399.5                | 3 316.6     | 146.4            | 1 520.2      |
| CNH Industrial               | 6.2391      | -5.9%     | -24.6%          | 8 971.0                | 8 443.6     | 598.6            | 5 439.4      |
| Enel                         | 4.1912      | 4.1%      | 32.1%           | 37 848.2               | 39 411.3    | 2 929.9          | 30 993.0     |
| Enel Green Power             | 2.0126      | -3.9%     | 9.8%            | 10 476.4               | 10 062.8    | 276.9            | 2 999.3      |
| Eni                          | 18.7021     | -0.9%     | 6.7%            | 68 575.6               | 67 966.7    | 9 161.7          | 55 375.3     |
| Exor                         | 30.6141     | 1.4%      | 5.9%            | 7 437.3                | 7 538.1     | 231.6            | 2 380.2      |
| Fiat                         | 7.6986      | 1.9%      | 29.9%           | 9 450.0                | 9 630.7     | 2 627.5          | 24 964.5     |
| Finmeccanica                 | 7.6538      | 7.2%      | 38.8%           | 4 129.4                | 4 425.0     | 816.3            | 6 393.8      |
| Generali                     | 16.5577     | 6.6%      | -3.2%           | 24 185.2               | 25 778.3    | 2 270.2          | 21 554.3     |
| Gtech                        | 18.7701     | 3.9%      | -15.3%          | 3 160.2                | 3 283.9     | 180.2            | 2 052.0      |
| Intesa Sanpaolo              | 2.3984      | 5.4%      | 33.6%           | 35 315.8               | 37 216.2    | 7 646.1          | 65 811.3     |
| Luxottica Group              | 40.7910     | 0.5%      | 4.8%            | 19 499.8               | 19 609.0    | 624.3            | 5 137.4      |
| Mediaset                     | 3.0210      | -4.1%     | -13.1%          | 3 720.2                | 3 568.5     | 687.2            | 7 541.3      |
| Mediobanca                   | 6.7556      | 1.0%      | 6.1%            | 5 764.0                | 5 820.0     | 830.1            | 7 768.3      |
| Mediolanum                   | 5.6015      | -1.2%     | -11.3%          | 4 179.5                | 4 128.4     | 227.8            | 2 889.0      |
| Moncler                      | 11.3148     | -5.2%     | -26.7%          | 2 983.0                | 2 828.7     | 224.0            | 1 946.3      |
| Pirelli & C                  | 10.8976     | -6.1%     | -13.5%          | 5 523.5                | 5 184.4     | 641.7            | 6 259.8      |
| Prismian                     | 14.5686     | -5.5%     | -22.1%          | 3 308.0                | 3 126.3     | 391.3            | 4 501.3      |
| Saipem                       | 16.7058     | -7.3%     | 7.5%            | 7 951.9                | 7 372.3     | 652.2            | 9 247.3      |
| Salvatore Ferragamo          | 21.6306     | -1.9%     | -21.7%          | 3 713.5                | 3 642.8     | 260.6            | 2 494.1      |
| Snam                         | 4.3622      | -1.1%     | 8.0%            | 14 911.0               | 14 751.2    | 776.5            | 7 427.7      |
| STMicroelectronics (foreign) | 6.0975      | -4.1%     | 5.3%            | 5 792.0                | 5 553.2     | 739.0            | 6 514.5      |
| Telecom Italia               | 0.9045      | 3.5%      | 25.5%           | 11 773.3               | 12 184.9    | 2 056.9          | 18 960.7     |
| Tenaris (foreign)            | 18.0919     | 8.1%      | 13.5%           | 19 754.2               | 21 358.2    | 716.4            | 6 274.3      |
| Terna                        | 3.9706      | 1.3%      | 9.3%            | 7 875.0                | 7 980.9     | 618.6            | 5 706.9      |
| Tod's                        | 78.4546     | -6.9%     | -35.2%          | 2 580.2                | 2 401.4     | 262.2            | 2 723.7      |
| Ubi Banca                    | 6.5679      | 10.1%     | 33.4%           | 5 378.4                | 5 922.6     | 1 213.4          | 10 309.0     |
| Unicredit                    | 6.1886      | 4.8%      | 14.9%           | 34 622.4               | 36 285.6    | 8 561.8          | 81 666.7     |
| Unipolsai                    | 2.2521      | -5.3%     | -0.1%           | 5 409.8                | 5 124.9     | 307.2            | 5 001.7      |
| World Duty Free              | 8.9982      | 2.8%      | -1.6%           | 2 227.7                | 2 290.2     | 173.5            | 1 533.6      |
| Yoox                         | 17.9253     | -9.3%     | -44.7%          | 1 169.7                | 1 068.4     | 386.3            | 3 831.3      |

Markets Analysis  
 Piazza degli Affari, 6 - 20123 Milano  
 T +39 02 724261 | Fax +39 02 8646.4323  
 e-mail: markets\_analysis@borsaitaliana.it  
 www.borsaitaliana.it

This document contains text, data, graphics, photographs, illustrations, artwork, names, logos, trade marks, service marks and information ("Information") connected with Borsa Italiana S.p.A. ("Borsa Italiana").

All reasonable efforts have been made to ensure that the Information in this document was correct at the time of publication. However, Borsa Italiana Spa accepts no liability for decisions taken, or systems-related or other work carried out by any party based on this document.

The publication of this document does not represent solicitation, by Borsa Italiana, of public saving and is not to be considered as a recommendation by Borsa Italiana as to the suitability of the investment, if any, herein described.

