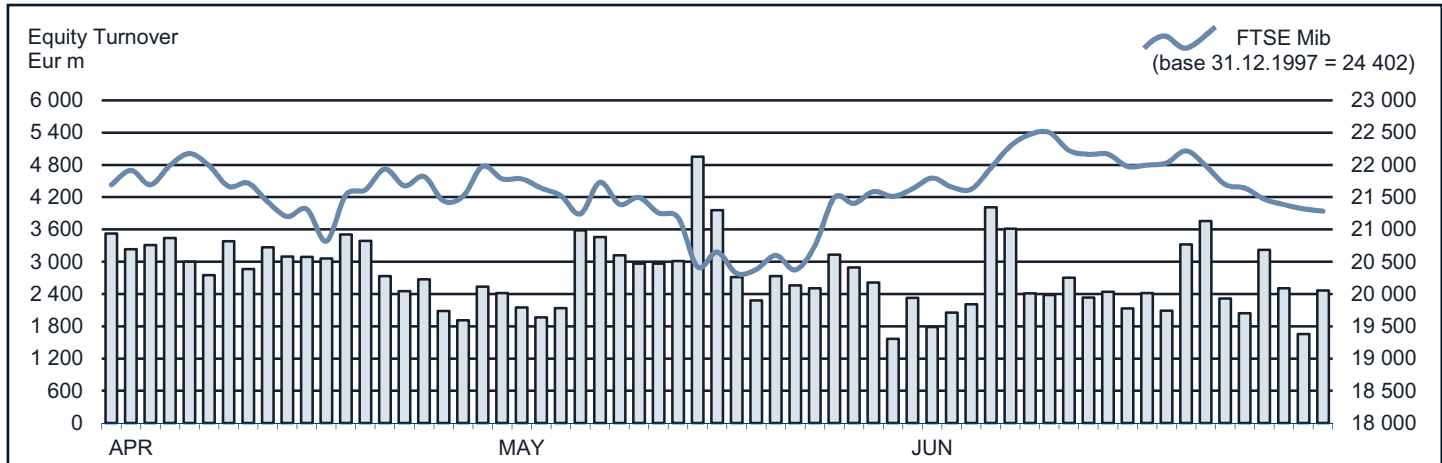




## FTSE MIB Statistics

June 2014

### EQUITY DAILY TURNOVER AND FTSE MIB EVOLUTION



### FTSE MIB SHARES (BASKET UPDATED AS FROM 30.06.2014)

	PRICE (eur)			CAPITALISATION (eur m)		TURNOVER (eur m)	
	30 JUN 2014	VAR % MOM	VAR. % 2013 END	30 MAY 2014	30 JUN 2014	JUN 2014	JAN-JUN 2014
A2A	0.8415	-4.2%	-1.2%	2 750.9	2 636.3	270.0	1 810.9
Atlantia	20.7801	2.1%	27.7%	16 810.8	17 159.9	1 072.9	6 304.5
Autogrill	6.4973	-7.3%	6.5%	1 784.0	1 652.9	170.8	1 337.2
Azimut Holding	18.7744	-6.6%	-2.3%	2 879.6	2 689.5	377.7	2 931.3
Banca Monte Paschi Siena	1.4258	-6.2%	32.0%	2 842.5	166.6	2 201.7	10 713.0
Banca Pop Emilia Romagna	6.5542	-12.3%	4.2%	2 747.3	2 188.0	618.2	3 219.8
Banca Popolare Milano	0.6603	-0.6%	65.2%	2 144.5	2 899.8	1 309.7	7 878.2
Banco Popolare	12.0419	-13.7%	13.7%	4 785.2	4 361.3	1 119.8	9 532.2
Buzzi Unicem	12.3869	-3.0%	-5.2%	2 111.6	2 048.2	178.5	1 373.1
Campari	6.3160	0.6%	4.3%	3 645.0	3 668.3	133.5	1 079.0
CNH Industrial	7.4793	-7.0%	-9.6%	10 887.4	10 119.9	519.0	3 739.5
Enel	4.2536	1.9%	34.1%	39 260.5	39 997.9	5 345.7	22 369.5
Enel Green Power	2.0797	1.2%	13.4%	10 274.5	10 398.5	355.0	2 133.8
Eni	19.9217	6.2%	13.6%	68 196.2	72 399.1	6 338.8	36 791.2
Exor	29.8230	-5.3%	3.2%	7 757.4	7 343.3	227.5	1 709.2
Fiat	7.2111	-6.0%	21.7%	9 598.4	9 020.8	1 664.1	17 478.0
Finmeccanica	6.9093	15.2%	25.3%	3 468.8	3 994.6	762.6	4 376.6
Generali	15.9874	-3.9%	-6.5%	25 891.0	24 890.3	2 164.3	15 313.9
Gtech	17.8763	-11.7%	-19.3%	3 521.8	3 124.9	196.2	1 074.6
Intesa Sanpaolo	2.2597	-8.2%	25.9%	38 170.3	35 044.7	8 516.0	44 508.3
Luxottica Group	42.2487	1.0%	8.6%	19 999.4	20 269.8	460.5	3 342.2
Mediaset	3.5744	-1.2%	2.8%	4 272.9	4 222.2	728.4	5 461.2
Mediobanca	7.2731	-0.7%	14.3%	6 308.9	6 265.1	802.4	5 554.1
Mediolanum	5.6446	-10.2%	-10.6%	4 628.6	4 158.8	283.1	2 178.6
Moncler	12.0179	-10.0%	-22.2%	3 339.0	3 004.5	192.4	1 379.1
Pirelli & C	11.7229	-4.7%	-6.9%	5 854.5	5 577.1	613.1	4 671.3
Prismian	16.3297	-3.9%	-12.7%	3 646.8	3 504.2	401.8	3 358.7
Saipem	19.7236	2.2%	26.9%	8 517.0	8 704.0	884.5	7 007.4
Salvatore Ferragamo	21.6847	-2.8%	-21.5%	3 756.6	3 651.9	208.5	1 783.7
Snam	4.4085	2.5%	9.1%	14 548.4	14 907.8	842.6	5 119.3
STMicroelectronics (foreign)	6.5474	-11.1%	13.1%	6 708.5	5 962.8	545.6	4 576.2
Telecom Italia	0.9261	1.4%	28.5%	12 248.6	12 426.2	2 109.6	12 976.6
Tenaris (foreign)	17.1910	4.6%	7.9%	19 406.2	20 294.6	605.0	4 499.4
Terna	3.8795	-0.1%	6.8%	7 802.5	7 797.7	983.2	4 040.0
Tod's	93.1568	-6.2%	-23.0%	3 038.5	2 851.5	169.1	1 902.2
Ubi Banca	6.3323	-5.7%	28.6%	6 056.2	5 710.2	1 182.9	6 980.2
Unicredit	6.0975	-4.1%	13.2%	36 868.5	35 751.6	8 777.0	58 338.6
Unipolsai	2.3370	-6.6%	3.7%	5 692.3	5 318.1	355.4	4 069.0
World Duty Free	8.9172	-12.0%	-2.4%	2 580.1	2 269.6	142.7	1 051.9
Yoox	19.7527	-15.5%	-39.1%	1 374.0	1 161.1	425.8	2 679.0

Markets Analysis  
 Piazza degli Affari, 6 - 20123 Milano  
 T +39 02 724261 | Fax +39 02 8646.4323  
 e-mail: markets\_analysis@borsaitaliana.it  
 www.borsaitaliana.it

This document contains text, data, graphics, photographs, illustrations, artwork, names, logos, trade marks, service marks and information ("Information") connected with Borsa Italiana S.p.A. ("Borsa Italiana").

All reasonable efforts have been made to ensure that the Information in this document was correct at the time of publication. However, Borsa Italiana Spa accepts no liability for decisions taken, or systems-related or other work carried out by any party based on this document.

The publication of this document does not represent solicitation, by Borsa Italiana, of public saving and is not to be considered as a recommendation by Borsa Italiana as to the suitability of the investment, if any, herein described.

