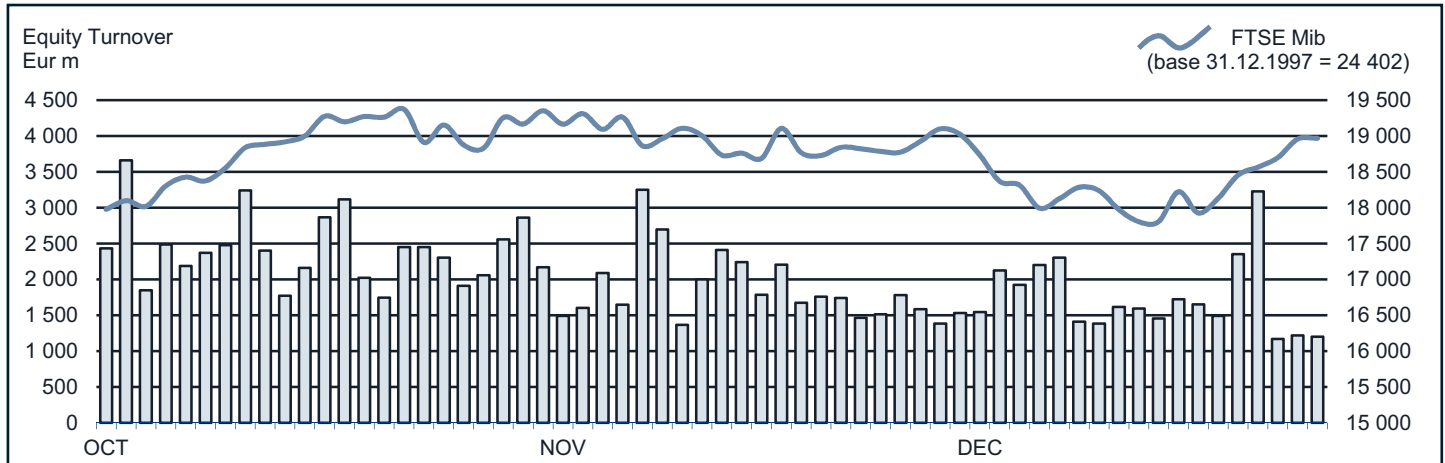




### EQUITY DAILY TURNOVER AND FTSE MIB EVOLUTION



### FTSE MIB SHARES (BASKET UPDATED AS FROM 23.12.2013)

	PRICE (eur)			CAPITALISATION (eur m)		TURNOVER (eur m)	
	30 DEC 2013	VAR % MOM	VAR. % 2012 END	29 NOV 2013	30 DEC 2013	DEC 2013	JAN-DEC 2013
A2A	0.8518	1.1%	95.2%	2 638.4	2 668.7	194.0	3 247.5
Ansaldo STS	7.8463	-2.0%	24.9%	1 441.7	1 412.3	161.8	1 974.6
Atlantia	16.2722	-1.3%	18.5%	10 907.5	13 437.3	736.8	7 005.8
Autogrill	6.0986	-1.7%	56.6%	1 578.6	1 551.5	184.1	2 898.6
Azimut Holding	19.8306	5.3%	88.1%	2 696.9	2 840.8	244.5	3 492.1
Banca Monte Paschi Siena	0.1729	-7.5%	-23.2%	2 183.9	2 019.8	762.9	12 193.6
Banca Pop Emilia Romagna	6.9252	-2.8%	32.2%	2 378.4	2 311.8	202.7	3 318.1
Banca Popolare Milano	0.4481	1.8%	-1.4%	1 421.9	1 447.2	344.2	6 603.0
Banco Popolare	1.3986	-0.6%	11.5%	2 482.8	2 466.7	522.8	8 922.7
Buzzi Unicem	13.0732	2.8%	23.9%	2 103.2	2 161.6	163.2	1 996.0
Campari	6.0566	1.7%	4.4%	3 458.9	3 517.7	140.6	2 003.4
CNH Industrial	8.2732	-1.9%	..	11 369.8	11 159.4	610.7	2 252.1
Enel	3.1729	-5.8%	0.5%	31 661.6	29 835.4	2 096.4	29 654.3
Enel Green Power	1.8332	1.3%	30.0%	9 048.5	9 166.1	258.6	3 116.4
Eni	17.5335	-1.4%	-5.0%	64 621.3	63 719.9	3 846.9	68 885.2
Exor	28.9053	0.5%	52.1%	7 082.6	7 117.3	191.0	2 667.1
Fiat	5.9268	1.3%	54.9%	7 318.6	7 412.6	1 298.8	22 390.2
Finmeccanica	5.5139	2.6%	27.0%	3 107.0	3 187.9	299.9	6 179.3
Fondiaria - Sai	2.3871	22.6%	151.3%	1 793.0	2 197.5	543.7	3 765.9
Generali	17.1070	1.0%	24.2%	26 366.2	26 633.5	1 922.3	26 501.2
Gtech	22.1643	-2.2%	28.1%	3 942.0	3 855.8	103.6	2 090.9
Intesa Sanpaolo	1.7952	0.2%	37.4%	27 768.2	27 828.4	3 314.2	59 505.0
Luxottica Group	38.9157	0.1%	25.1%	18 558.4	18 583.7	502.7	6 072.8
Mediaset	3.4782	3.9%	122.5%	3 952.8	4 108.6	818.5	8 291.6
Mediobanca	6.3649	0.2%	36.7%	5 468.1	5 481.0	411.3	7 571.9
Mediolanum	6.3170	-2.7%	64.4%	4 777.8	4 649.3	309.0	2 642.3
Pirelli & C	12.5935	10.6%	44.8%	5 415.4	5 991.2	472.0	5 519.5
Prysmian	18.6996	-2.7%	24.3%	4 122.4	4 012.8	368.3	5 157.0
Saipem	15.5431	-6.7%	-47.2%	7 355.1	6 859.2	727.0	16 172.7
Salvatore Ferragamo	27.6279	-5.3%	65.0%	4 912.1	4 652.8	225.5	2 657.0
Snam	4.0389	2.2%	14.7%	13 368.5	13 658.3	567.9	9 568.8
STMicroelectronics (foreign)	5.7892	-1.0%	8.3%	5 324.8	5 272.2	569.7	7 834.1
Telecom Italia	0.7209	1.9%	5.3%	9 495.6	9 672.3	1 263.7	19 846.2
Tenaris (foreign)	15.9390	-4.1%	1.4%	19 622.4	18 816.6	425.4	6 884.4
Terna	3.6340	2.1%	20.4%	7 150.7	7 304.4	442.6	6 539.0
Tod's	121.0312	-3.7%	26.2%	3 846.0	3 704.7	197.6	2 843.3
Ubi Banca	4.9244	-2.1%	40.5%	4 536.1	4 440.5	504.9	6 978.2
Unicredit	5.3881	-0.3%	44.7%	31 300.1	31 192.6	5 146.4	95 571.6
World Duty Free	9.1410	6.2%	..	2 190.4	2 326.6	180.9	765.8
Yoox	32.4145	4.2%	172.9%	1 804.7	1 886.8	285.6	1 501.7

#### Markets Analysis

Piazze degli Affari, 6 - 20123 Milano  
 T +39 02 724261 | Fax +39 02 8646.4323  
 e-mail: markets\_analysis@borsaitaliana.it  
 www.borsaitaliana.it

The publication of this document does not represent solicitation, by Borsa Italiana S.p.A., of public saving and is not to be considered as a recommendation by Borsa Italiana S.p.A. as to the suitability of the investment, if any, herein described.

This document is not to be considered complete and is meant for information and discussion purposes only. Borsa Italiana S.p.A. accepts no liability, arising, without limitation to the generality of the foregoing, from inaccuracies and/or mistakes, for decisions and/or actions taken by any party based on this document. AGREX, BEST VENUE INDICATOR, BORSA ITALIANA and BORSA ITALIANA's logo, BORSA ITALIANA ITALIAN STOCK EXCHANGE, BORSA VIRTUALE, BORSAM@T, CITY FOR GOOD, DDM, ELITE, ETFplus, EUROMOT, EXPANDI, EXTRAMOT, IDEM-THE ITALIAN DERIVATIVES MARKET, IDEX, MARKET CONNECT, MIB, MIB 30, MIBTEL, MIDEX, MINIFIB, MIV, MOT, MTA, MTF, NIS, SEDEX, STAR, STAR SEGMENTO TITOLI CON ALTI REQUISITI, TECHSTAR are registered trademarks owned by Borsa Italiana S.p.A. London Stock Exchange, the coat of arms device and AIM are registered trademarks of London Stock Exchange plc.

FTSE is a trademark of the London Stock Exchange Group companies and is used by FTSE International Limited under licence.

The above trademarks and any other trademark owned by London Stock Exchange Group cannot be used without express written consent by the Company having the ownership on the same.  
 © December 2013 Borsa Italiana S.p.A.. All rights reserved.

