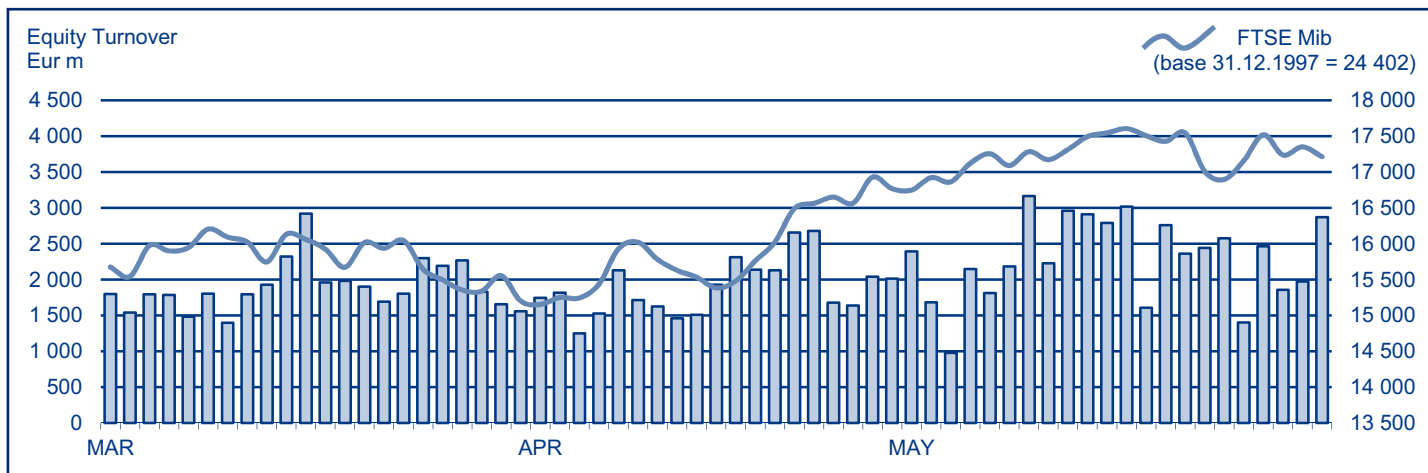


## EQUITY DAILY TURNOVER AND FTSE MIB EVOLUTION



## FTSE MIB SHARES (BASKET UPDATED AS FROM 17.04.2013)

	PRICE (eur)			CAPITALISATION (eur m)		TURNOVER (eur m)	
	31 MAY 2013	VAR % MOM	VAR. % 2012 END	30 APR 2013	31 MAY 2013	MAY 2013	JAN-MAY 2013
A2A	0.6510	7.6%	49.2%	1 895.0	2 039.5	301.1	1 567.0
Ansaldo Sts	7.4306	-5.1%	5.1%	1 252.7	1 188.9	149.4	944.2
Atlantia	13.1243	-2.8%	-4.5%	8 940.4	8 686.0	720.3	2 754.4
Autogrill	10.1526	2.8%	16.4%	2 513.5	2 582.8	217.8	1 211.8
Azimut Holding	14.5426	5.4%	37.9%	2 035.2	2 083.3	398.3	1 514.8
Banca Monte Paschi Siena	0.2402	9.8%	6.6%	2 555.3	2 806.5	827.1	6 990.9
Banca Pop Emilia Romagna	6.4964	0.5%	24.0%	2 150.3	2 168.7	256.6	1 398.3
Banca Popolare Milano	0.4297	-15.9%	-5.5%	1 650.8	1 387.9	685.6	3 494.7
Banco Popolare	1.1569	4.1%	-7.8%	1 959.6	2 040.4	897.4	3 695.4
Buzzi Unicem	12.7586	10.1%	21.0%	1 916.3	2 109.6	236.8	913.0
Campari	5.7117	-7.2%	-1.6%	3 574.9	3 317.3	183.7	873.7
Diasorin	30.4218	6.8%	0.2%	1 592.9	1 700.7	174.1	837.4
Enel	2.9271	-0.8%	-7.3%	27 741.1	27 524.9	2 484.3	12 482.0
Enel Green Power	1.6566	3.1%	17.5%	8 037.7	8 283.0	322.4	1 332.1
Eni	17.7341	-2.2%	-3.9%	65 877.4	64 449.1	10 801.1	30 368.2
Exor	24.6633	5.2%	29.8%	3 756.2	3 952.5	204.9	1 013.9
Fiat	6.0546	32.2%	58.3%	5 725.7	7 570.7	2 524.8	9 986.2
Fiat Industrial	8.9280	2.2%	8.1%	10 675.6	10 915.1	718.4	4 109.1
Finmeccanica	4.3041	10.2%	-0.9%	2 258.8	2 488.4	536.2	2 810.7
Fondiaria - Sai	1.5469	-2.2%	62.9%	1 455.7	1 424.0	272.0	1 375.3
Generali	14.4051	2.8%	4.6%	21 816.6	22 427.0	2 298.2	11 374.5
Intesa Sanpaolo	1.4504	4.1%	11.0%	21 598.3	22 483.1	5 557.5	26 198.3
Lottomatica	20.5465	5.4%	18.8%	3 361.6	3 544.0	256.6	1 028.2
Luxottica Group	39.8237	-0.2%	28.1%	19 004.1	18 957.4	557.8	2 806.6
Mediaset	2.4214	22.5%	54.9%	2 335.4	2 860.2	720.3	3 562.2
Mediobanca	5.1218	4.6%	10.0%	4 216.7	4 410.5	541.9	3 355.1
Mediolanum	5.2037	1.7%	35.5%	3 759.2	3 823.1	218.3	1 230.4
Parmalat	2.3924	3.9%	36.0%	4 060.2	4 218.0	131.6	550.7
Pirelli & C	8.9277	13.5%	2.7%	3 741.4	4 247.2	477.4	2 426.9
Prysmian	16.4756	6.9%	9.5%	3 306.7	3 535.5	524.6	2 362.7
Saipem	20.8045	-3.9%	-29.3%	9 556.0	9 181.0	1 600.2	8 980.8
Salvatore Ferragamo	24.2512	6.5%	44.8%	3 836.3	4 084.1	257.3	1 304.7
Snam	3.6588	-2.0%	3.9%	12 628.8	12 372.7	1 800.4	4 542.2
STMicroelectronics (foreign)	7.2789	11.4%	36.1%	5 951.7	6 627.8	648.9	3 002.9
Telecom Italia	0.6082	-6.0%	-11.2%	8 677.5	8 159.9	1 308.1	7 138.7
Tenaris (foreign)	16.2993	-3.4%	3.7%	19 918.5	19 241.9	758.1	3 003.5
Terna	3.4103	-3.9%	13.0%	7 129.7	6 854.7	782.4	2 796.2
Tod's	110.7910	0.4%	15.5%	3 378.7	3 391.2	196.6	1 150.9
Ubi Banca	3.5377	10.7%	0.9%	2 881.2	3 190.1	532.0	2 774.7
Unicredit	4.3564	8.8%	17.0%	23 188.1	25 220.0	8 508.4	44 548.3

### Markets Analysis

Piazza Affari, 6 - 20123 Milano  
 T +39 02 724261 | Fax +39 02 8646.4323  
 e-mail: markets\_analysis@borsaitaliana.it  
[www.borsaitaliana.it](http://www.borsaitaliana.it)