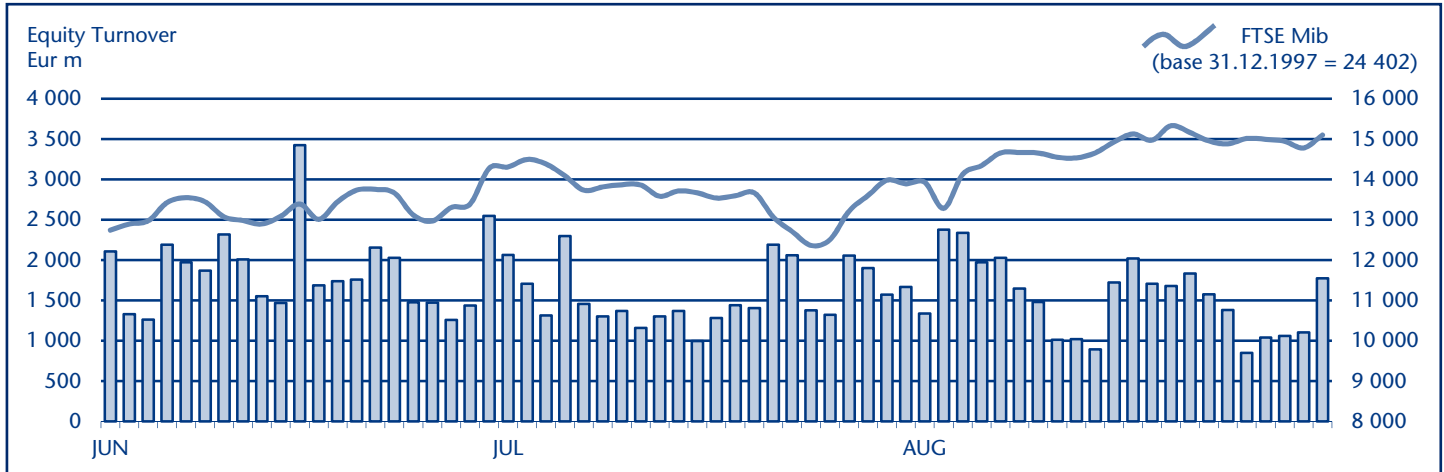


August 2012

EQUITY DAILY TURNOVER AND FTSE MIB EVOLUTION



FTSE MIB SHARES (BASKET UPDATED AS FROM 18.06.2012)

| | PRICE (eur) | | | CAPITALISATION (eur m) | | TURNOVER (eur m) | |
|------------------------------|-------------|-----------|-----------------|------------------------|-------------|------------------|--------------|
| | 31 AUG 2012 | VAR % MOM | VAR. % 2011 END | 31 JUL 2012 | 31 AUG 2012 | AUG 2012 | JAN-AUG 2012 |
| A2A | 0.4182 | 22.6% | -43.2% | 1 068.6 | 1 310.3 | 314.8 | 1 777.6 |
| Ansaldo Sts | 6.2051 | 0.6% | -2.9% | 986.9 | 992.8 | 97.4 | 1 028.6 |
| Atlantia | 11.1788 | 3.5% | -5.0% | 7 150.5 | 7 398.5 | 417.2 | 4 671.3 |
| Autogrill | 6.7959 | 2.1% | -9.5% | 1 693.9 | 1 728.9 | 143.6 | 1 324.8 |
| Azimut Holding | 8.3590 | 8.8% | 37.4% | 1 100.5 | 1 197.5 | 98.8 | 939.6 |
| Banca Monte Paschi Siena | 0.2213 | 20.5% | -11.8% | 2 145.9 | 2 585.1 | 772.5 | 8 953.9 |
| Banca Pop Emilia Romagna | 4.2917 | 22.2% | -21.7% | 1 168.5 | 1 427.9 | 136.6 | 1 119.5 |
| Banca Popolare Milano | 0.4083 | 11.6% | 34.5% | 1 181.4 | 1 318.8 | 242.8 | 3 941.3 |
| Banco Popolare | 1.1584 | 22.3% | 18.5% | 1 670.2 | 2 043.2 | 314.3 | 4 059.1 |
| Buzzi Unicem | 8.1624 | 0.2% | 20.9% | 1 346.5 | 1 349.6 | 222.1 | 1 550.2 |
| Campari | 5.4552 | -2.5% | 5.6% | 3 250.1 | 3 168.4 | 136.2 | 1 494.1 |
| Diasorin | 24.1008 | 8.1% | 24.1% | 1 245.6 | 1 346.2 | 109.5 | 1 290.8 |
| Enel | 2.5987 | 12.0% | -16.5% | 21 816.9 | 24 436.1 | 2 565.2 | 25 682.6 |
| Enel Green Power | 1.3028 | 12.1% | -19.5% | 5 811.5 | 6 514.0 | 208.2 | 2 067.8 |
| Eni | 17.5446 | 3.4% | 10.1% | 61 682.5 | 63 760.2 | 4 884.3 | 43 817.1 |
| Exor | 18.9585 | 4.4% | 24.0% | 2 911.2 | 3 038.3 | 112.8 | 1 176.1 |
| Fiat | 4.3156 | 6.4% | 23.2% | 5 074.0 | 5 396.3 | 1 778.8 | 18 956.2 |
| Fiat Industrial | 8.0143 | 0.0% | 21.9% | 9 801.6 | 9 798.0 | 974.7 | 7 771.3 |
| Finmeccanica | 3.5079 | 15.8% | 23.3% | 1 750.9 | 2 028.1 | 698.1 | 5 567.1 |
| Generali | 11.2333 | 10.1% | -2.5% | 15 878.3 | 17 488.9 | 1 423.0 | 14 877.4 |
| Impregilo | 2.8486 | -7.2% | 19.4% | 1 235.0 | 1 146.4 | 88.9 | 1 832.8 |
| Intesa Sanpaolo | 1.2310 | 17.7% | -4.5% | 16 207.5 | 19 082.2 | 3 694.1 | 36 868.9 |
| Lottomatica | 16.5873 | 3.2% | 43.4% | 2 771.0 | 2 859.0 | 187.8 | 1 693.5 |
| Luxottica Group | 28.9786 | 2.6% | 34.1% | 13 276.1 | 13 630.7 | 641.7 | 3 857.7 |
| Mediaset | 1.5854 | 10.8% | -25.1% | 1 689.6 | 1 872.7 | 822.4 | 3 450.1 |
| Mediobanca | 3.7212 | 32.6% | -15.6% | 2 416.4 | 3 204.5 | 441.6 | 3 689.7 |
| Mediolanum | 3.1143 | 14.1% | 3.5% | 2 004.0 | 2 286.4 | 138.5 | 1 119.3 |
| Parmalat | 1.7231 | 12.4% | 34.1% | 2 693.2 | 3 028.5 | 60.4 | 563.4 |
| Pirelli & C | 8.7266 | 6.3% | 35.0% | 3 905.1 | 4 151.6 | 706.2 | 6 206.9 |
| Prysmian | 13.2896 | 0.9% | 39.5% | 2 825.5 | 2 849.7 | 444.8 | 3 547.0 |
| Saipem | 37.7338 | 0.3% | 15.3% | 16 598.0 | 16 651.7 | 1 670.0 | 10 575.9 |
| Salvatore Ferragamo | 16.2177 | 1.7% | 61.0% | 2 686.8 | 2 731.2 | 175.6 | 1 758.9 |
| Snam | 3.3473 | 2.1% | -1.2% | 11 704.6 | 11 319.5 | 595.8 | 5 022.0 |
| STMicroelectronics (foreign) | 4.7427 | 7.1% | 4.1% | 4 033.8 | 4 318.5 | 562.2 | 5 434.5 |
| Telecom Italia | 0.7383 | 11.0% | -10.8% | 8 925.8 | 9 906.3 | 1 181.1 | 10 387.9 |
| Tenaris (foreign) | 16.5340 | 3.6% | 16.3% | 18 832.8 | 19 519.0 | 730.0 | 5 683.3 |
| Terna | 2.7657 | 2.5% | 6.6% | 5 425.3 | 5 559.0 | 321.1 | 3 569.7 |
| Tod's | 84.1391 | 11.7% | 34.2% | 2 304.7 | 2 575.4 | 398.2 | 2 399.2 |
| Ubi Banca | 2.6444 | 14.1% | -15.3% | 2 090.1 | 2 384.6 | 277.2 | 2 918.6 |
| Unicredit | 3.1047 | 10.4% | -26.5% | 16 273.3 | 17 967.1 | 5 065.2 | 64 425.7 |

Markets Analysis

Piazza Affari, 6 - 20123 Milano
 T +39 02 72426.478 | Fax +39 02 8646.4323
 e-mail: markets_analysis@borsaitaliana.it
www.borsaitaliana.it