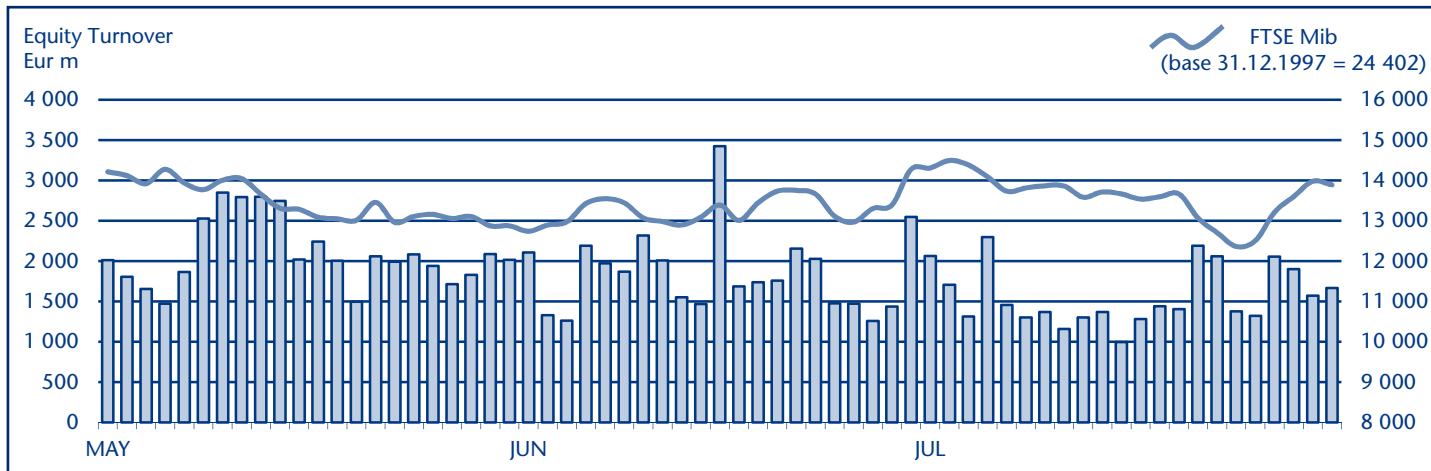


July 2012

## EQUITY DAILY TURNOVER AND FTSE MIB EVOLUTION



## FTSE MIB SHARES (BASKET UPDATED AS FROM 18.06.2012)

	PRICE (eur)			CAPITALISATION (eur m)		TURNOVER (eur m)	
	31 JUL 2012	VAR % MOM	VAR. % 2011 END	29 JUN 2012	31 JUL 2012	JUL 2012	JAN-JUL 2012
A2A	0.3411	-17.8%	-53.7%	1 300.4	1 068.6	158.4	1 462.8
Ansaldo Sts	6.1680	24.6%	-3.5%	792.3	986.9	250.5	931.2
Atlantia	10.8042	9.7%	-8.2%	6 518.2	7 150.5	531.5	4 254.1
Autogrill	6.6583	-5.6%	-11.3%	1 794.5	1 693.9	169.9	1 181.2
Azimut Holding	7.6821	-2.1%	26.3%	1 124.2	1 100.5	89.3	840.8
Banca Monte Paschi Siena	0.1837	-4.5%	-26.8%	2 246.0	2 145.9	498.7	8 181.4
Banca Pop Emilia Romagna	3.5118	-14.7%	-35.9%	1 369.7	1 168.5	104.7	982.9
Banca Popolare Milano	0.3658	1.2%	20.5%	1 167.9	1 181.4	331.0	3 698.5
Banco Popolare	0.9470	-7.4%	-3.1%	1 804.0	1 670.2	270.9	3 744.8
Buzzi Unicem	8.1434	11.4%	20.6%	1 208.7	1 346.5	116.2	1 328.1
Campari	5.5959	3.0%	8.4%	3 154.0	3 250.1	134.9	1 357.9
Diasorin	22.3013	-1.8%	14.8%	1 268.4	1 245.6	82.6	1 181.3
Enel	2.3201	-7.3%	-25.5%	23 538.3	21 816.9	2 638.2	23 117.4
Enel Green Power	1.1623	-4.6%	-28.2%	6 093.8	5 811.5	233.9	1 859.5
Eni	16.9728	2.2%	6.5%	66 513.6	61 682.5	4 640.6	38 932.8
Exor	18.1657	9.3%	18.8%	2 664.3	2 911.2	116.3	1 063.3
Fiat	4.0579	4.1%	15.8%	4 876.1	5 074.0	2 065.0	17 177.5
Fiat Industrial	8.0172	5.7%	22.0%	9 274.7	9 801.6	853.7	6 796.6
Finmeccanica	3.0285	-3.1%	6.4%	1 807.1	1 750.9	423.5	4 869.0
Generali	10.1988	-2.8%	-11.5%	16 334.5	15 878.3	1 746.5	13 454.5
Impregilo	3.0687	-8.1%	28.7%	1 344.5	1 235.0	175.5	1 743.9
Intesa Sanpaolo	1.0456	-2.9%	-18.9%	16 686.2	16 207.5	4 037.8	33 174.8
Lottomatica	16.0766	6.6%	39.0%	2 599.2	2 771.0	397.6	1 505.7
Luxottica Group	28.2477	3.0%	30.7%	12 861.8	13 276.1	446.1	3 216.1
Mediaset	1.4304	5.0%	-32.4%	1 608.5	1 689.6	335.8	2 627.8
Mediobanca	2.8061	-17.5%	-36.4%	2 928.5	2 416.4	330.9	3 248.2
Mediolanum	2.7296	0.9%	-9.3%	1 986.0	2 004.0	116.4	980.8
Parmalat	1.5324	3.1%	19.2%	2 611.7	2 693.2	54.1	503.0
Pirelli & C	8.2085	0.5%	27.0%	3 886.6	3 905.1	724.6	5 500.7
Prysmian	13.1769	13.7%	38.3%	2 485.2	2 825.5	471.9	3 102.3
Saipem	37.6121	9.7%	14.9%	15 133.7	16 598.0	1 198.2	8 905.8
Salvatore Ferragamo	15.9539	-1.5%	58.4%	2 727.4	2 686.8	190.6	1 583.3
Snam	3.2775	-6.0%	-3.3%	12 456.7	11 704.6	818.7	4 426.1
STMicroelectronics (foreign)	4.4300	3.9%	-2.7%	3 882.6	4 033.8	545.5	4 872.3
Telecom Italia	0.6653	-13.9%	-19.6%	10 363.7	8 925.8	1 073.7	9 206.8
Tenaris (foreign)	15.9527	17.0%	12.2%	16 098.6	18 832.8	702.5	4 953.3
Terna	2.6992	-3.9%	4.0%	5 646.2	5 425.3	471.8	3 248.6
Tod's	75.2951	-3.3%	20.1%	2 382.4	2 304.7	241.5	2 001.0
Ubi Banca	2.3178	-7.3%	-25.8%	2 254.2	2 090.1	234.0	2 641.4
Unicredit	2.8120	-0.4%	-33.4%	16 334.1	16 273.3	6 583.1	59 360.4

### Markets Analysis

Piazza Affari, 6 - 20123 Milano  
 T +39 02 72426.478 | Fax +39 02 8646.4323  
 e-mail: [markets\\_analysis@borsaitaliana.it](mailto:markets_analysis@borsaitaliana.it)  
[www.borsaitaliana.it](http://www.borsaitaliana.it)