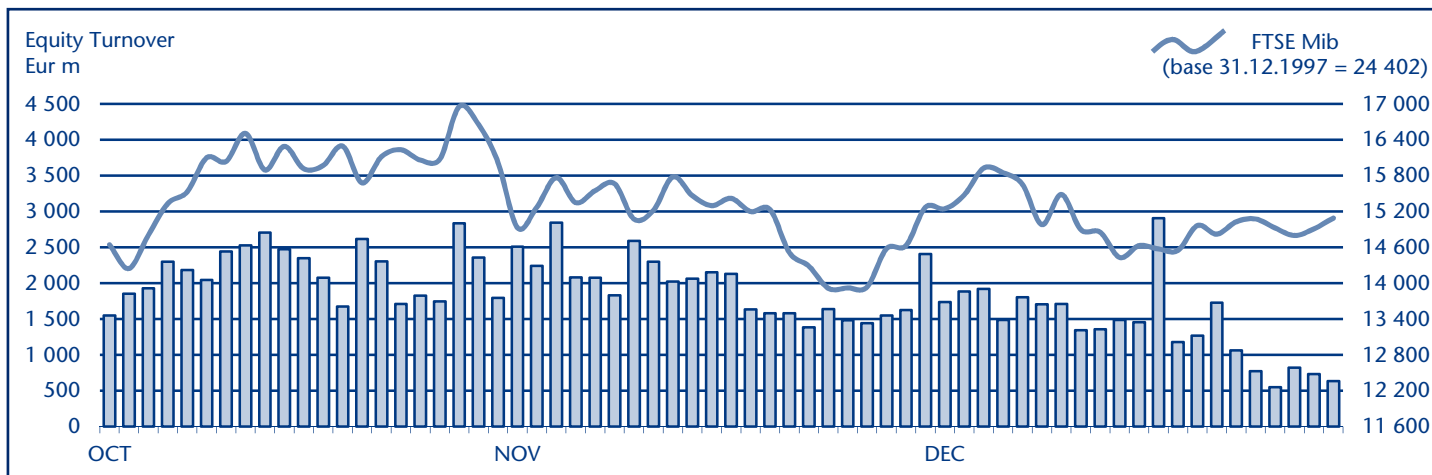


## EQUITY DAILY TURNOVER AND FTSE MIB EVOLUTION



## FTSE MIB SHARES (BASKET UPDATED AS FROM 27.12.2011)

	PRICE (eur)			CAPITALISATION (eur m)		TURNOVER (eur m)	
	30 DEC 2011	VAR % MOM	VAR. % 2010 END	30 NOV 2011	30 DEC 2011	DEC 2011	JAN-DEC 2011
A2A	0.7368	-3.9%	-25.5%	2 401.5	2 308.3	132.9	2 512.8
Ansaldo Sts	7.3052	0.8%	-20.2%	1 014.6	1 022.7	80.4	1 676.0
Atlantia	12.3573	11.0%	-14.9%	7 018.5	7 789.0	559.0	9 122.9
Autogrill	7.5053	-1.6%	-29.1%	1 939.6	1 909.4	120.2	2 464.2
Azimut Holding	6.2182	6.7%	-6.6%	835.0	890.8	61.4	1 708.3
Banca Monte Paschi Siena	0.2508	1.6%	-65.2%	2 676.0	2 720.1	389.9	7 169.2
Banca Pop Emilia Romagna	5.4797	3.8%	-41.7%	1 535.9	1 593.7	93.6	1 178.3
Banca Popolare Milano	0.3036	12.4%	-64.5%	700.1	980.4	317.9	4 805.9
Banco Popolare	0.9776	12.6%	-60.5%	1 531.3	1 724.2	205.0	10 371.3
Buzzi Unicem	6.7516	1.8%	-21.7%	1 096.1	1 116.4	99.6	2 546.1
Campari	5.1643	-1.7%	5.2%	3 051.6	2 999.4	127.9	2 711.1
Diasorin	19.4280	-9.1%	-39.1%	1 191.1	1 082.1	172.2	2 414.3
Enel	3.1134	1.6%	-17.2%	28 816.8	29 276.6	2 609.9	52 042.4
Enel Green Power	1.6178	-1.8%	2.5%	8 234.3	8 088.9	154.7	4 006.7
Eni	15.9414	3.3%	-2.8%	61 798.0	63 851.1	4 477.2	91 536.7
Exor	15.2860	-0.8%	-36.9%	2 468.6	2 449.7	199.4	3 840.3
Fiat	3.5031	-5.1%	-46.5%	4 033.8	3 827.8	2 385.8	46 938.8
Fiat Industrial	6.5727	1.7%	..	7 062.4	7 179.5	824.1	18 774.8
Finmeccanica	2.8460	-6.8%	-66.5%	1 765.6	1 645.4	632.4	6 756.9
Generali	11.5255	-5.6%	-19.4%	19 011.7	17 943.8	1 525.6	30 018.4
Impregilo	2.3852	12.0%	12.4%	856.8	959.9	201.1	2 083.9
Intesa Sanpaolo	1.2891	6.7%	-32.7%	18 735.4	19 982.4	4 992.0	82 208.6
Lottomatica	11.5701	3.7%	23.9%	1 920.0	1 991.7	170.3	2 724.9
Luxottica Group	21.6124	1.3%	-5.5%	9 963.3	10 100.3	206.3	4 361.2
Mediaset	2.1161	-0.8%	-53.4%	2 519.6	2 499.6	331.5	7 190.9
Mediobanca	4.4115	-4.5%	-34.0%	3 979.6	3 798.9	266.9	6 981.3
Mediolanum	3.0095	13.7%	-3.0%	1 941.4	2 208.4	57.3	1 748.7
Parmalat	1.3302	-10.9%	-35.4%	2 620.2	2 335.0	56.0	8 142.8
Pirelli & C	6.4640	-6.2%	6.3%	3 278.7	3 075.2	509.9	6 990.1
Prysmian	9.5246	-3.1%	-25.2%	2 107.9	2 042.0	338.0	7 254.3
Saipem	32.7326	1.1%	-11.3%	14 289.6	14 444.0	948.4	18 432.5
Salvatore Ferragamo	10.0726	-7.7%	..	1 838.4	1 696.3	103.9	911.4
Snam Rete Gas	3.3894	-0.4%	-9.2%	12 150.0	12 104.2	478.1	8 978.5
STMicroelectronics (foreign)	4.5549	-0.2%	-41.9%	4 155.1	4 147.5	319.8	11 153.7
Telecom Italia	0.8273	-0.7%	-14.8%	11 175.1	11 099.8	812.7	18 975.4
Tenaris (foreign)	14.2156	5.1%	-22.8%	15 965.4	16 782.0	564.1	10 522.4
Terna	2.5949	0.5%	-18.2%	5 191.7	5 215.7	357.0	7 549.2
Tod's	62.7067	-6.6%	-15.3%	2 055.7	1 919.4	230.9	4 009.2
Ubi Banca	3.1217	5.7%	-49.4%	2 662.2	2 815.0	315.8	7 504.5
Unicredit	6.4150	-17.1%	-59.1%	14 915.4	12 364.3	3 120.0	132 989.2

### Markets Analysis

Piazza Affari, 6 - 20123 Milano

T +39 02 72426.478 | Fax +39 02 8646.4323

 e-mail: [markets\\_analysis@borsaitaliana.it](mailto:markets_analysis@borsaitaliana.it)
[www.borsaitaliana.it](http://www.borsaitaliana.it)