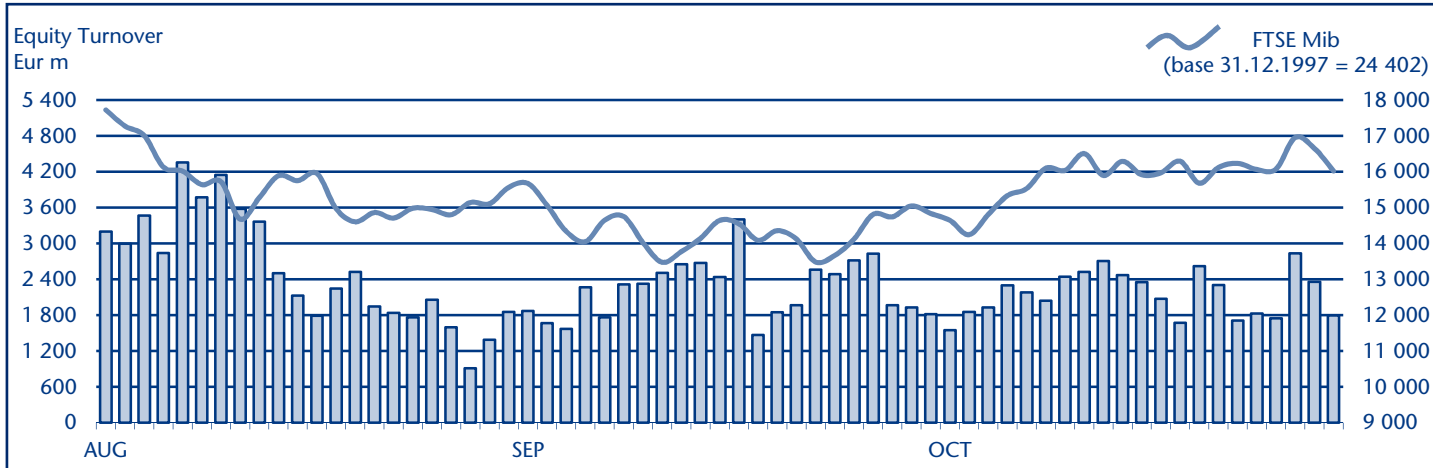


EQUITY DAILY TURNOVER AND FTSE MIB EVOLUTION



FTSE MIB SHARES (BASKET UPDATED AS FROM 28.09.2011)

	PRICE (eur)			CAPITALISATION (eur m)		TURNOVER (eur m)	
	31 OCT 2011	VAR % MOM	VAR. % 2010 END	30 SEP 2011	31 OCT 2011	OCT 2011	JAN-OCT 2011
A2A	0.9928	6.1%	-3.9%	2 931.2	3 110.4	141.8	2 175.2
Ansaldo Sts	7.7688	2.9%	-15.1%	1 056.6	1 087.6	176.0	1 448.7
Atlantia	11.1782	3.6%	-23.0%	6 799.3	7 045.8	460.2	7 679.5
Autogrill	8.5273	11.6%	-19.5%	1 944.4	2 169.3	176.8	2 194.8
Azimut Holding	5.6986	8.0%	-14.4%	756.1	816.3	58.4	1 576.4
Banca Monte Paschi Siena	0.3426	-19.0%	-52.4%	4 586.6	3 715.6	490.6	6 444.7
Banca Pop Emilia Romagna	5.8451	-21.3%	-37.8%	1 883.5	1 483.0	149.3	992.8
Banca Popolare Milano	0.4858	-15.3%	-43.2%	734.6	201.7	319.3	4 036.2
Banco Popolare	1.0871	-12.9%	-56.1%	2 201.1	1 917.1	321.8	9 950.0
Buzzi Unicem	6.8556	11.6%	-20.5%	1 015.6	1 133.6	151.2	2 211.8
Campari	5.6288	3.4%	14.7%	3 163.1	3 269.2	194.5	2 234.3
Diasorin	23.5043	-14.4%	-26.3%	1 529.3	1 309.1	352.6	2 061.3
Enel	3.4422	3.7%	-8.5%	31 219.0	32 367.9	3 827.1	44 213.7
Enel Green Power	1.6530	-3.2%	4.7%	8 534.7	8 264.9	210.2	3 658.8
Eni	16.0885	21.9%	-1.9%	52 862.1	64 440.1	7 512.8	80 615.0
Exor	16.1883	9.0%	-33.2%	2 381.0	2 594.3	209.3	3 439.8
Fiat	4.5738	11.1%	-30.1%	4 499.6	4 997.7	4 973.2	40 600.4
Fiat Industrial	6.5901	15.7%	..	6 219.1	7 198.6	1 537.8	16 658.0
Finmeccanica	5.0491	-4.0%	-40.5%	3 040.1	2 919.2	339.3	5 295.4
Fondiaria - Sai	1.6156	1.8%	-55.8%	582.5	593.0	112.7	2 442.4
Generali	13.1045	10.6%	-8.3%	18 444.0	20 402.1	1 719.4	26 669.3
Impregilo	2.1480	14.9%	1.3%	752.4	864.5	214.1	1 749.8
Intesa Sanpaolo	1.3148	9.4%	-31.4%	18 627.8	20 381.2	5 268.4	71 552.1
Lottomatica	13.8198	16.6%	48.0%	2 039.9	2 378.9	212.5	2 272.2
Luxottica Group	21.4059	11.9%	-6.4%	8 932.0	9 997.6	268.4	3 833.9
Mediaset	2.7385	15.6%	-39.7%	2 798.6	3 234.8	309.0	6 377.8
Mediobanca	5.8135	-2.2%	-13.1%	5 120.8	5 006.2	339.1	6 329.0
Mediolanum	2.8246	2.1%	-9.0%	2 030.2	2 072.6	78.5	1 593.3
Parmalat	1.6112	1.3%	-21.7%	2 791.1	2 827.5	68.2	7 929.2
Pirelli & C	6.5004	22.0%	6.9%	2 535.3	3 092.5	628.2	5 705.9
Prysmian	11.1592	11.0%	-12.4%	2 154.9	2 392.5	410.3	6 474.6
Saipem	32.9452	23.7%	-10.7%	11 753.6	14 537.9	1 776.6	15 988.5
Snam Rete Gas	3.5351	2.3%	-5.3%	12 339.8	12 624.5	1 266.8	7 817.7
STMicroelectronics (foreign)	5.0903	3.7%	-35.1%	4 468.3	4 635.0	609.7	10 274.1
Telecom Italia	0.9098	10.6%	-6.3%	11 041.4	12 206.9	1 275.7	16 834.4
Tenaris (foreign)	11.7145	23.9%	-36.4%	11 160.7	13 829.4	824.3	8 948.3
Terna	2.7964	1.1%	-11.9%	5 560.4	5 620.8	530.5	6 650.4
Tod's	72.6363	12.6%	-1.9%	1 973.9	2 223.4	365.9	3 400.1
Ubi Banca	2.8078	-0.2%	-54.5%	2 537.0	2 531.9	308.7	6 936.4
Unicredit	0.8616	6.2%	-45.1%	15 639.0	16 606.1	7 096.2	125 015.5

Markets Analysis

Piazza Affari, 6 - 20123 Milano

T +39 02 72426.478 | Fax +39 02 8646.4323

 e-mail: markets_analysis@borsaitaliana.it
www.borsaitaliana.it