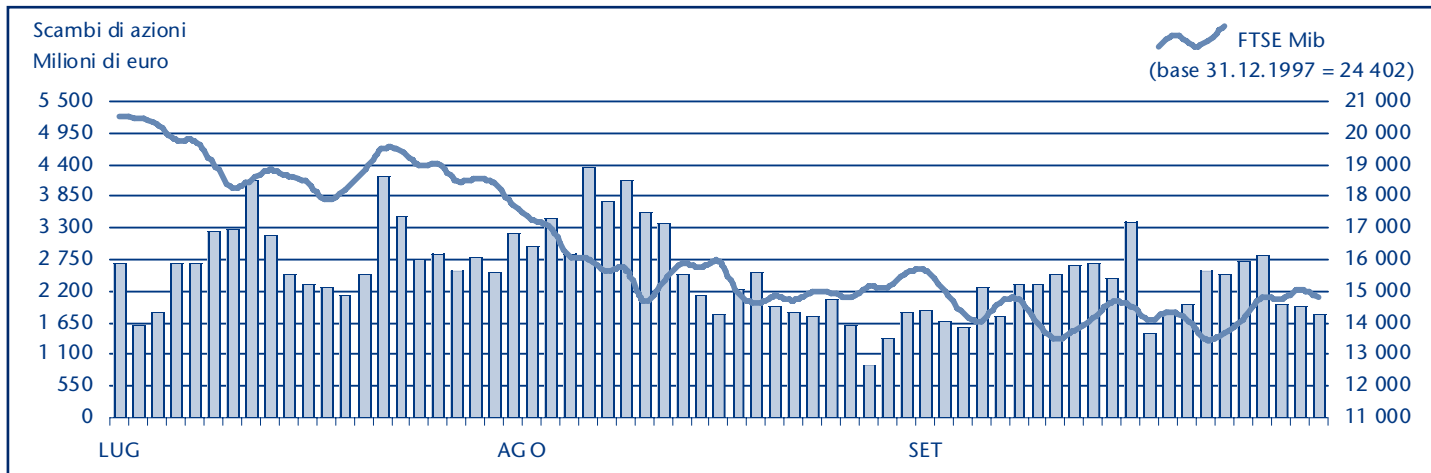


ANDAMENTO DEGLI SCAMBI AZIONARI E FTSE MIB



ANDAMENTO AZIONI FTSE MIB (PANIERE IN VIGORE DAL 28.09.2011)

	PREZZO UFFICIALE (euro)			CAPITALIZZAZIONE (ML euro)		SCAMBI (ML euro)	
	30 SET 2011	VAR % MESE	VAR. % FINE 2010	31 AGO 2011	30 SET 2011	SET 2011	GEN-SET 2011
A2A	0.9356	-2.5%	-9.4%	3 005.3	2 931.2	144.2	2 033.4
Ansaldo Sts	7.5475	20.5%	-17.5%	877.1	1 056.6	295.5	1 272.7
Atlantia	10.7872	-3.2%	-25.7%	7 023.5	6 799.3	452.5	7 219.3
Autogrill	7.6433	-11.3%	-27.8%	2 191.0	1 944.4	163.2	2 018.0
Azimut Holding	5.2781	7.4%	-20.7%	703.9	756.1	63.9	1 518.1
Banca Monte Paschi Siena	0.4230	0.5%	-41.3%	4 565.3	4 586.6	327.4	5 954.1
Banca Pop Emilia Romagna	7.4240	3.5%	-21.0%	1 819.2	1 883.5	148.7	843.6
Banca Popolare Milano	1.7698	19.4%	-32.9%	615.5	734.6	195.7	3 716.9
Banco Popolare	1.2481	7.5%	-49.6%	2 047.5	2 201.1	321.7	9 628.2
Buzzi Unicem	6.1420	-11.2%	-28.8%	1 144.3	1 015.6	144.8	2 060.5
Campari	5.4461	-2.8%	11.0%	3 253.5	3 163.1	260.8	2 039.8
Diasorin	27.4566	-7.3%	-13.9%	1 650.1	1 529.3	154.3	1 708.8
Enel	3.3200	-1.7%	-11.7%	31 759.0	31 219.0	4 333.0	40 386.5
Enel Green Power	1.7069	6.6%	8.2%	8 004.9	8 534.7	339.8	3 448.6
Eni	13.1978	-4.4%	-19.5%	55 321.7	52 862.1	13 419.9	73 102.2
Exor	14.8573	-9.9%	-38.7%	2 642.5	2 381.0	251.3	3 230.5
Fiat	4.1179	-3.1%	-37.1%	4 642.3	4 499.6	4 351.0	35 627.2
Fiat Industrial	5.6935	-14.2%	..	7 244.5	6 219.1	1 171.4	15 120.2
Finmeccanica	5.2584	2.5%	-38.1%	2 966.3	3 040.1	504.1	4 956.1
Fondiaria - Sai	1.5869	5.6%	-56.5%	551.7	582.5	95.8	2 329.7
Generali	11.8468	-5.0%	-17.1%	19 412.7	18 444.0	2 059.8	24 949.9
Impregilo	1.8694	4.6%	-11.9%	719.3	752.4	177.9	1 535.7
Intesa Sanpaolo	1.2017	5.9%	-37.3%	17 582.5	18 627.8	5 015.3	66 283.6
Lottomatica	11.8499	8.9%	26.9%	1 871.1	2 039.9	159.6	2 059.8
Luxottica Group	19.1252	-6.9%	-16.4%	9 596.3	8 932.0	299.3	3 565.5
Mediaset	2.3692	-11.8%	-47.8%	3 174.6	2 798.6	340.4	6 068.8
Mediobanca	5.9466	-6.7%	-11.1%	5 490.0	5 120.8	395.7	5 989.9
Mediolanum	2.7669	7.7%	-10.8%	1 884.4	2 030.2	66.6	1 514.8
Parmalat	1.5906	-2.6%	-22.7%	2 865.0	2 791.1	160.2	7 861.0
Pirelli & C	5.3292	-6.8%	-12.4%	2 719.6	2 535.3	621.9	5 077.7
Prysmian	10.0511	-9.6%	-21.1%	2 383.2	2 154.9	438.7	6 064.3
Saipem	26.6356	-13.6%	-27.8%	13 601.8	11 753.6	1 410.9	14 211.9
Snam Rete Gas	3.4554	3.2%	-7.4%	11 959.7	12 339.8	608.0	6 550.9
STMicroelectronics (estera)	4.9072	7.2%	-37.4%	4 166.5	4 468.3	751.3	9 664.4
Telecom Italia	0.8229	-2.2%	-15.3%	11 284.6	11 041.4	1 413.9	15 558.7
Tenaris (estera)	9.4539	-17.3%	-48.7%	13 491.4	11 160.7	631.5	8 124.0
Terna	2.7664	10.2%	-12.8%	5 047.9	5 560.4	610.2	6 120.0
Tod's	64.4879	-18.5%	-12.9%	2 421.2	1 973.9	441.9	3 034.2
Ubi Banca	2.8134	10.6%	-54.4%	2 294.4	2 537.0	313.2	6 627.6
Unicredit	0.8114	-12.6%	-48.3%	17 890.1	15 639.0	5 994.5	117 919.3

Markets Analysis

Piazza Affari, 6 - 20123 Milano

T +39 02 72426.478 | Fax +39 02 8646.4323

e-mail: markets_analysis@borsaitaliana.it

www.borsaitaliana.it