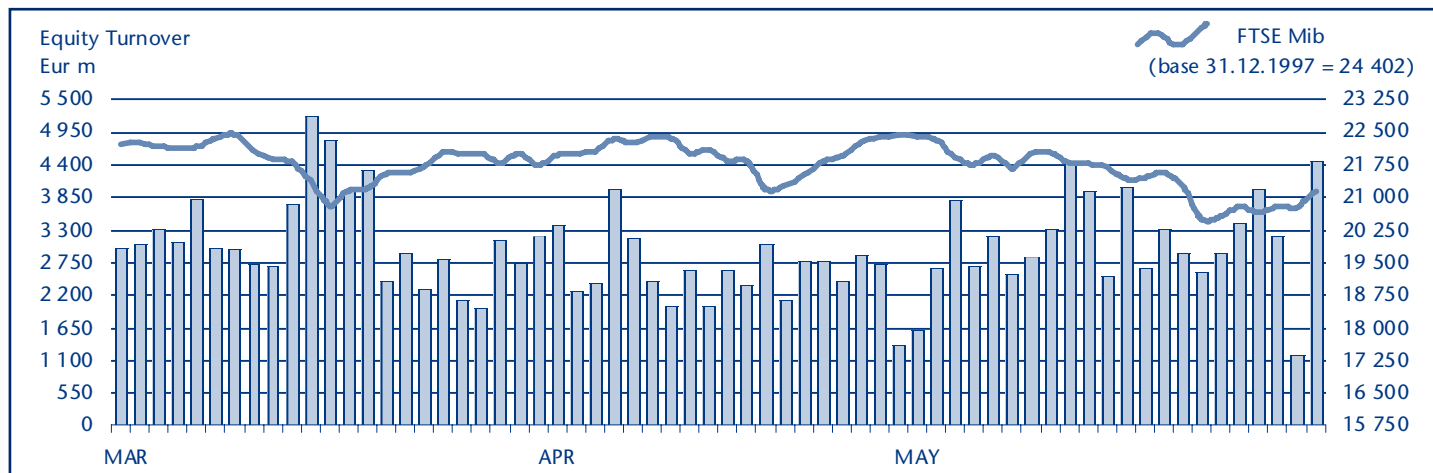


EQUITY DAILY TURNOVER AND FTSE MIB EVOLUTION



FTSE MIB SHARES (BASKET UPDATED AS FROM 23.05.2011)

	PRICE (eur)			CAPITALISATION (eur m)		TURNOVER (eur m)	
	31 MAY 2011	VAR % MOM	VAR. % 2010 END	29 APR 2011	31 MAY 2011	MAY 2011	JAN-MAY 2011
A2A	1.1755	-3.8%	13.8%	3 827.5	3 682.8	252.8	1 203.0
Ansaldo Sts	9.9166	-5.5%	-7.1%	1 259.5	1 190.0	80.0	570.9
Atlantia	16.4351	-0.9%	7.8%	9 953.1	9 866.0	1 445.3	4 548.3
Autogrill	8.8878	-8.1%	-16.1%	2 461.4	2 261.1	251.2	1 183.0
Azimut Holding	7.5600	-10.2%	13.6%	1 230.4	1 083.0	179.4	891.5
Banca Monte Paschi Siena	0.8717	-5.0%	2.2%	5 088.4	4 834.6	349.3	2 547.6
Banca Popolare Milano	1.9184	-17.2%	-27.3%	961.9	796.3	410.4	2 328.0
Banco Popolare	1.8058	-9.9%	-27.0%	3 534.3	3 184.6	830.6	7 000.7
Bulgari	12.1263	-1.3%	49.8%	3 712.8	3 666.3	174.7	3 217.8
Buzzi Unicem	9.6177	-7.4%	11.5%	1 717.1	1 590.3	170.4	1 378.2
Campari	5.1977	7.1%	5.9%	2 819.0	3 018.9	283.6	991.1
Diasorin	33.5526	2.8%	5.2%	1 817.2	1 868.8	240.4	904.8
Enel	4.7659	-0.8%	26.7%	45 184.7	44 815.3	3 938.3	19 919.9
Enel Green Power	1.9459	-3.0%	23.3%	10 026.6	9 729.3	382.4	2 100.2
Eni	16.4769	-8.5%	0.5%	72 145.7	65 995.9	13 626.6	37 352.4
Exor	23.4274	-3.8%	-3.4%	3 902.6	3 754.5	376.7	2 103.2
Fiat	7.4007	3.2%	13.1%	7 838.6	8 085.5	3 352.7	19 702.4
Fiat Industrial	9.1889	-8.4%	..	10 956.1	10 037.3	1 303.2	10 495.2
Finmeccanica	8.6067	-5.2%	1.4%	5 247.6	4 976.0	1 071.1	3 042.3
Fondiaria - Sai	5.6839	-9.4%	-10.2%	781.1	707.5	120.3	1 353.7
Generali	15.1854	-6.0%	6.2%	25 139.3	23 641.8	2 602.0	14 259.5
Impregilo	2.2302	-3.3%	5.1%	928.6	897.6	169.8	818.9
Intesa Sanpaolo	1.8016	-14.4%	-5.9%	26 601.5	21 347.4	8 590.6	37 567.4
Lottomatica	13.9843	-6.2%	49.7%	2 564.0	2 405.5	307.0	1 286.3
Luxottica Group	22.0998	-1.3%	-3.4%	10 455.4	10 315.8	485.0	2 192.9
Mediaset	3.6468	-19.0%	-19.7%	5 318.1	4 307.7	1 476.8	4 181.8
Mediobanca	7.7128	0.0%	15.4%	6 643.0	6 641.7	696.2	3 333.4
Mediolanum	3.6471	-7.8%	17.5%	2 897.8	2 673.0	161.1	926.0
Parmalat	2.5817	1.4%	25.4%	4 425.5	4 486.8	1 326.4	6 259.0
Pirelli & C	6.9048	-1.4%	13.5%	3 331.1	3 284.9	598.7	2 525.6
Prysmian	14.5687	-8.3%	14.4%	3 405.0	3 123.1	830.9	4 034.6
Saipem	36.4900	-5.0%	-1.1%	16 950.0	16 102.0	2 263.2	8 593.7
Snam Rete Gas	4.0937	-2.5%	9.6%	14 993.8	14 619.1	1 521.2	3 827.6
STMicroelectronics (foreign)	7.8940	-1.0%	0.6%	7 260.4	7 186.9	944.5	6 467.6
Telecom Italia	0.9855	-3.1%	1.5%	13 635.4	13 214.2	1 388.2	9 648.8
Tenaris (foreign)	16.9177	-0.5%	-8.1%	20 062.7	19 972.0	1 082.8	5 138.8
Terna	3.3997	0.6%	7.1%	6 789.6	6 833.3	670.4	3 029.8
Tod's	89.6294	-3.0%	21.1%	2 827.2	2 743.5	462.8	1 520.4
Ubi Banca	5.4349	-10.2%	-17.5%	3 868.6	3 473.7	631.2	2 899.0
Unicredit	1.5703	-9.5%	0.0%	33 460.6	30 265.7	13 264.9	75 639.2

Markets Analysis

Piazza Affari, 6 - 20123 Milano
 T +39 02 72426.478 | Fax +39 02 8646.4323
 e-mail: research@borsaitaliana.it
www.borsaitaliana.it