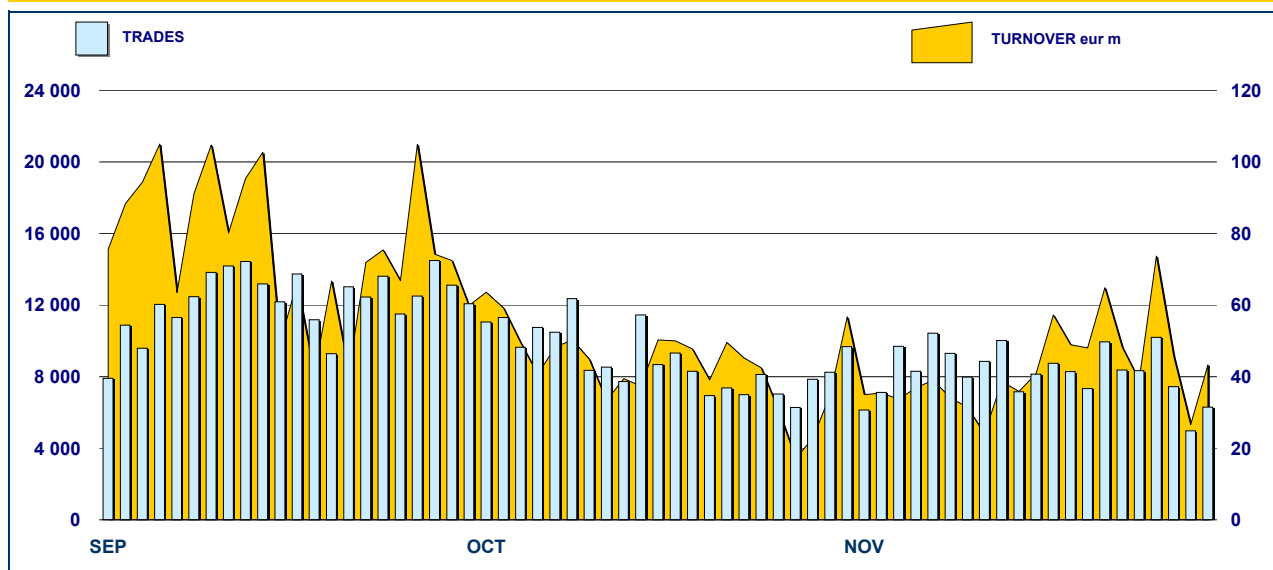


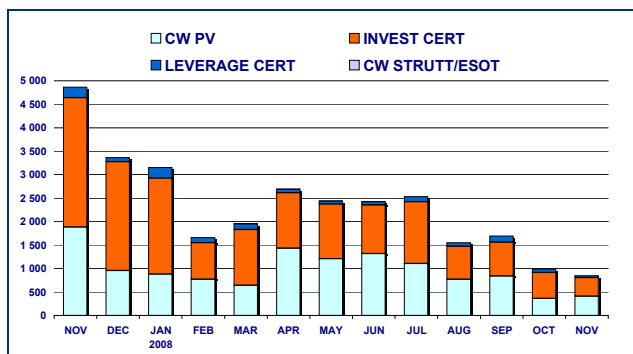
SECURITISED DERIVATIVES DAILY TURNOVER



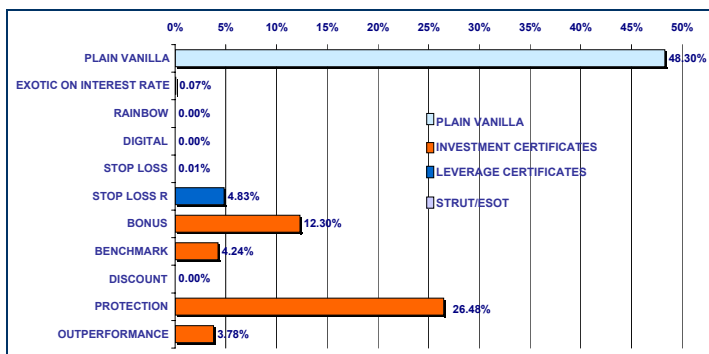
MAIN INDICATORS

	LISTED SeDeX					TRADING						
	DEC 2007		OCTOBER 2008		NOVEMBER 2008		OCTOBER 2008		NOVEMBER 2008		JAN-NOV 2008	
	LISTED END OF MONTH	LISTED END OF MONTH	MONTH NEW LISTED	LISTED END OF MONTH	MONTH NEW LISTED	TRADES number	TURNOVER eur m	TRADES number	TURNOVER eur m	TRADES number	TURNOVER eur m	
MARKET SEGMENTS												
PLAIN VANILLA CW	2 839	2 438	154	2 215	418	169 569	360.5	141 511	408.3	2 121 439	9 726.8	
STRUCTURED/EXOTIC CW	154	112	-	112	-	1 320	0.6	1 705	0.7	12 559	11.3	
LEVERAGE CERTIFICATES	399	263	10	283	37	13 799	74.8	9 887	40.9	186 455	1 089.8	
INVESTMENT CERTIFICATES CLASS 1	270	287	-	281	-	5 592	92.6	3 435	35.8	47 813	787.2	
INVESTMENT CERTIFICATES CLASS 2	746	977	40	914	13	12 254	459.2	10 359	359.8	188 335	10 313.6	
TOTAL	4 408	4 077	204	3 805	468	202 534	987.6	166 897	845.4	2 556 601	21 928.6	
UNDERLYING ASSETS												
DOMESTIC SHARES	2 011	1 852	40	1 510	225	74 208	513.4	60 061	382.6	1 000 774	12 321.7	
DOMESTIC INDICES	438	490	17	539	80	88 188	232.3	72 627	321.9	1 104 432	5 123.0	
FOREIGN SHARES	223	257	57	178	12	2 938	4.8	1 929	2.2	36 504	115.5	
FOREIGN INDICES	1 065	934	47	1 013	87	19 649	181.5	14 300	107.7	270 552	3 713.7	
COMMODITIES (*)	333	249	29	240	32	11 982	27.7	13 154	13.5	90 624	279.2	
INTEREST RATE (**)	143	117	-	115	-	1 467	1.3	1 812	1.0	13 446	53.7	
CROSS RATE (***)	166	137	13	165	28	3 584	18.5	2 687	11.5	36 050	254.8	
OTHERS	29	41	1	45	4	518	8.1	327	5.0	4 219	66.9	
TOTAL	4 408	4 077	204	3 805	468	202 534	987.6	166 897	845.4	2 556 601	21 928.6	
(*) Futures on Commodities are included												
(**) Futures on Interest rate are included												
(***) Futures on Cross rate are included												
ISSUERS												
ABAXBANK	54	25	-	25	-	30	0.6	16	0.29	254	4	
ABN AMRO BANK	667	580	15	598	37	17 497	155.2	11 723	66.4	214 821	1 637	
BANCA ALETTI	126	177	6	177	-	3 399	126.6	1 968	80.1	63 392	3 034	
BANCA ANTONVENETA	117	108	-	108	-	1 311	0.5	1 695	0.6	13 607	9	
BANCA IMI	789	488	-	213	13	14 435	97.8	8 203	92.4	361 120	3 218	
BAYERISCHE HYPO-UND VEREINSBANK	59	80	-	80	-	602	8.0	800	10.7	55 545	508	
BNP PARIBAS ARBITRAGE ISSUANCE	5	407	14	335	34	15 903	42.7	9 386	24.2	105 831	516	
CREDIT SUISSE INTERNATIONAL	-	1	-	1	-	132	2.2	143	2.9	309	6	
DEUTSCHE BANK AG	755	531	-	347	3	18 428	278.7	16 268	219.7	252 221	5 584	
DEUTSCHE BANK AG LONDON	3	1	-	1	-	-	-	2	0.0	29	0	
GOLDMAN SACHS INTERNATIONAL	22	21	-	21	-	210	1.4	95	0.3	2 098	53	
GOLDMAN SACHS JERSEY LIMITED	559	249	-	182	-	1 285	2.9	560	1.1	239 577	662	
JP MORGAN CHASE BANK	3	4	-	4	-	245	4.4	162	2.7	1 630	22	
J.P. MORGAN STRUCTURED PRODUCTS	-	7	7	7	-	24	0.1	250	0.9	274	1	
MERRILL LYNCH LUX	13	2	-	1	-	129	1.0	101	0.8	396	4	
MORGAN STANLEY & CO. INTERNATIONAL	-	5	-	5	-	-	-	-	-	3	0	
NOMURA BANK INTERNATIONAL	-	1	-	1	-	1	0.0	-	-	2	0	
SAL OPPENHEIM	22	64	7	64	-	808	10.2	317	3.7	3 637	58	
SOCIETE GENERALE	497	606	154	668	99	91 210	142.7	96 848	204.6	940 648	2 969	
SOCIETE GENERALE ACCEPTANCE N.V.	18	18	-	18	-	438	2.8	311	2.7	4 439	43	
SOCIETE GENERALE EFFEKTEN	25	58	1	58	-	227	1.3	153	0.8	2 020	25	
UBS AG	12	12	-	2	-	-	-	-	-	20	0	
UNICREDIT BANCA MOBILIARE	-	-	-	882	-	-	-	-	-	-	-	
UNICREDIT	662	625	-	7	282	36 173	108.2	17 883	130.6	294 621	3 576	
VONTOBEL FINANCIAL PRODUCTS GMBH	-	7	-	-	-	47	0.2	13	0.03	107	0	
TOTAL	4 408	4 077	204	3 805	468	202 534	987.6	166 897	845.4	2 556 601	21 928.6	

**TURNOVER
MONTHLY FIGURES - eur m**



**TURNOVER BY TYPOLOGIES
MONTHLY FIGURES - eur m**



**MOST TRADED UNDERLYING ASSETS
IN TERMS OF NUMBER OF TRADES**

UNDERLYING ASSET	NOVEMBRE 2008			
	TRADES			DAILY AVERAGE
	NUMBER	% TOT	% CUM	
S&P/MIB	72 602	43.50%	43.50%	3 630
ENI	23 182	13.89%	57.39%	1 159
FIAT	7 302	4.38%	61.77%	365
UNICREDIT	6 219	3.73%	65.49%	311
FUTURE BRENT 06/09	5 471	3.28%	68.77%	274
FUTURE BRENT 03/09	5 088	3.05%	71.82%	254
INTESA SANPAOLO	4 504	2.70%	74.52%	225
ENEL	3 629	2.17%	76.69%	181
DOW JONES INDUSTRIAL AVG	3 561	2.13%	78.83%	178
TELECOM ITALIA	3 422	2.05%	80.88%	171

**MOST TRADED UNDERLYING ASSETS
IN TERMS OF TURNOVER**

UNDERLYING ASSET	NOVEMBRE 2008			
	TURNOVER			DAILY AVERAGE
	eur m	% TOT	% CUM	
S&P/MIB	321.91	38.08%	38.08%	16.10
ENI	268.27	31.73%	69.81%	13.41
DOW JONES EURO STOXX 50	53.19	6.29%	76.10%	2.66
INTESA SANPAOLO	37.40	4.42%	80.52%	1.87
ENEL	26.92	3.18%	83.71%	1.35
DAX	14.23	1.68%	85.39%	0.71
MEDIASET	12.81	1.51%	86.90%	0.64
EUR EURIBOR3M TRMMI	11.93	1.41%	88.31%	0.60
FIAT	11.28	1.33%	89.65%	0.56
NIKKEI 225	11.15	1.32%	90.97%	0.56

MOST TRADED INSTRUMENTS

PLAIN VANILLA COVERED WARRANTS - NOVEMBER 2008					LEVERAGE CERTIFICATES - NOVEMBER 2008				
ISIN	ISSUER	UNDERLYING	MKTG NAME	TURNOV. eur m	ISIN	ISSUER	UNDERLYING	MKTG NAME	TURNOV. eur m
IT0004393937	BANCA IMI	S&P/MIB	PLAIN VANILL	72.86	NL0006355810	ABN AMRO BANK	S&P/MIB	MINI FUTURES	6.31
DE000DB4Q9Y5	DEUTSCHE BANK AG	DOW JONES E	PLAIN VANILL	40.31	NL0006457202	ABN AMRO BANK	S&P/MIB	MINI FUTURES	3.98
FR0010672170	SOCIETE GENERALE	S&P/MIB	PLAIN VANILL	20.50	NL0006457269	ABN AMRO BANK	UNICREDIT	MINI FUTURES	2.90
FR0010685545	SOCIETE GENERALE	S&P/MIB	PLAIN VANILL	16.73	NL0006457111	ABN AMRO BANK	S&P/MIB	MINI FUTURES	1.67
FR0010685271	SOCIETE GENERALE	S&P/MIB	PLAIN VANILL	16.13	NL0006355844	ABN AMRO BANK	DAX	MINI FUTURES	1.41
STRUCTURED/EXOTIC COVERED WARRANTS - NOVEMBER 2008					INVESTMENT CERTIFICATES - NOVEMBER 2008				
ISIN	ISSUER	UNDERLYING	MKTG NAME	TURNOV. eur m	ISIN	ISSUER	UNDERLYING	MKTG NAME	TURNOV. eur m
IT0003921258	BANCA ANTONVENETA	EURIBOR 3M	EURIBOR CAI	0.08	DE000DB3QDS9	DEUTSCHE BANK AG	ENI	EQUITY PROTEC	125.89
IT0004245251	BANCA ALETTI	DOW JONES E	CW VALORE I	0.07	IT0004346737	BANCA ALETTI	ENI	BORSA PROTETTI	49.83
IT0004081706	BANCA ANTONVENETA	EURIBOR 3M	EURIBOR CAI	0.06	IT0004035918	UNICREDIT	ENI	BONUS	44.51
IT0003805501	BANCA ANTONVENETA	EURIBOR 3M	EURIBOR CAI	0.04	IT0004035934	UNICREDIT	INTESA SANP/BONUS		27.60
IT0004245244	BANCA ALETTI	S&P/MIB	CW VALORE I	0.04	IT0004346752	BANCA ALETTI	ENEL	BORSA PROTETTI	20.19

News

BNP Paribas - New Issue Programme for Equity Protection, Bonus and Twin Win Certificates based on Italian Prospectuses

Glossary

Plain Vanilla: plain vanilla Covered Warrants
 IC - Benchmark: linear tracking of the underlying
 IC - Bonus: minimum return guaranteed in case of moderate decline
 IC - Equity Protection: (partial/total) protection from decline
 IC - Discount: purchase of the underlying at a discounted price
 IC - Structured: combination of different options
 LC - Stop Loss: certificates with a knock-out barrier and leverage effect
 LC - Stop Loss R: Stop Loss with daily update of the strike
 CW SE - Exotics on Exchange Rates: CWs on interest rates and with periodic exercise
 CW SE - Rainbow: CWs on a ratio of two assets



Borsa Italiana
London Stock Exchange Group

Research & Development
 Piazza degli Affari, 6 - 20123 - Milano
 Tel +39 02 72426.478 - Fax +39 02 8646.4323
 e-mail: research@borsaitaliana.it
www.borsaitaliana.it

The publication of this document does not represent solicitation, by Borsa Italiana S.p.A., of public saving and is not to be considered as a recommendation by Borsa Italiana as to the suitability of the investment, if any, herein described. This document has not to be considered complete and it is meant for information and discussion purposes only. Borsa Italiana accepts no liability, arising, without limitation to the generality of the foregoing, from inaccuracies and/or mistakes, for decisions and/or actions taken by any party based on this documents. Trademarks Borsa Italiana and Borsa Italiana's logo, Expandi, IDEM, MOT, MTA, MTF, STAR, SeDeX, All STARS, MIB, MIB 30, MIBTEL, MIDEX, IDEX, ITEX, Bit Club, Academy, MiniFIB, DDM, EuroMOT, Market Connect, NIS are owned by Borsa Italiana S.p.A. Trademark S&P is owned by The McGraw-Hill Companies Inc. The above trademarks and any other trademark owned by the London Stock Exchange Group cannot be used without express written consent by the Company having the ownership of the same. Borsa Italiana S.p.A. is subject to direction and coordination of London Stock Exchange Group Plc. Borsa Italiana's subsidiaries are subject to its direction and coordination. © November 2008 Borsa Italiana S.p.A. All rights reserved.