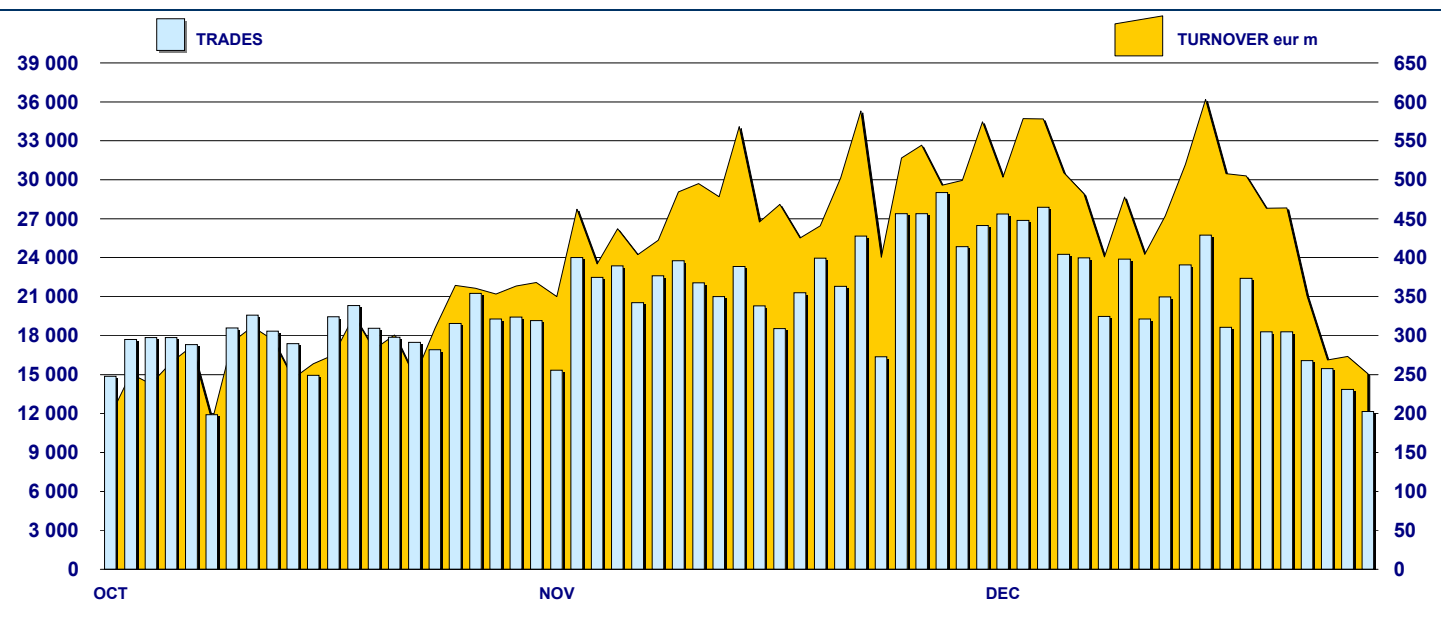


SECURITISED DERIVATIVES DAILY TURNOVER



MAIN INDICATORS

LISTED SeDeX

TRADING

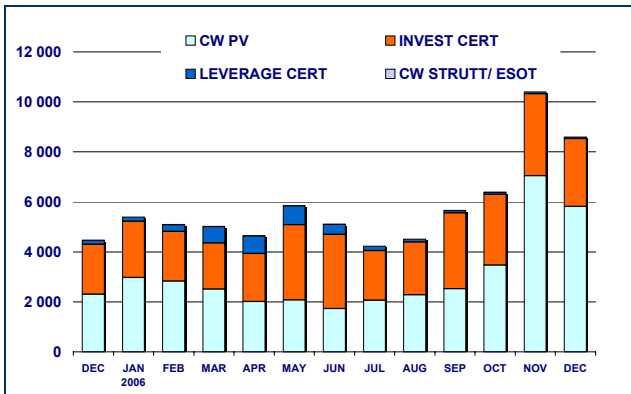
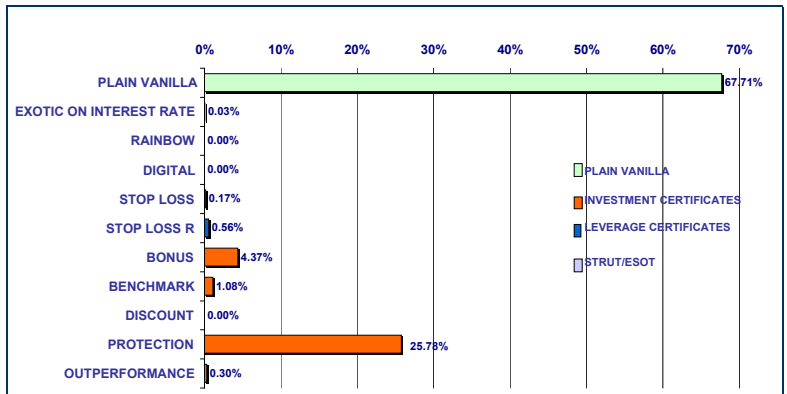
	LISTED SeDeX			LISTED SeDeX		TRADING		TRADING		TRADING	
	DEC 2005 LISTED END OF MONTH	NOVEMBER 2006 LISTED END OF MONTH	DECEMBER 2006 MONTH NEW LISTED	DEC 2005 LISTED END OF MONTH	NOVEMBER 2006 MONTH NEW LISTED	NOVEMBER 2006 TRADES number	NOVEMBER 2006 TURNOVER eur m	DICEMBRE 2006 TRADES number	DICEMBRE 2006 TURNOVER eur m	JAN-DEC 2006 TRADES number	JAN-DEC 2006 TURNOVER eur m
MARKET SEGMENTS											
PLAIN VANILLA CW	3 189	4 243	1 121	3 548	356	432 371	7 050.0	344 558	5 819.0	3 725 393	37 344.5
STRUTTURATI / ESOTICI CW	151	171	28	142	13	6 963	3.2	5 081	3.0	89 968	91.4
LEVERAGE CERTIFICATES	290	363	71	276	35	21 174	81.7	15 163	62.3	369 463	3 549.3
INVESTMENT CERTIFICATES	446	663	73	681	91	41 069	3 270.1	33 527	2 709.9	379 022	29 914.4
TOTAL	4 076	5 440	1 293	4 647	495	501 577	10 405.0	398 329	8 594.2	4 563 846	70 899.7
UNDERLYING ASSETS											
DOMESTIC SHARES	1 821	2 448	677	2 030	60	160 717	3 990.2	126 300	3 339.1	1 210 845	28 580.9
DOMESTIC INDICES	460	666	142	556	46	216 995	5 091.6	177 917	3 976.1	1 856 961	24 647.7
FOREIGN SHARES	494	507	98	330	42	17 472	163.1	10 054	138.1	177 088	3 345.2
FOREIGN INDICES	782	1 023	223	1 057	280	87 257	1 101.8	69 276	1 104.5	1 100 098	13 652.8
COMMODITIES (*)	213	361	55	281	13	8 277	43.2	5 481	20.7	79 714	437.9
INTEREST RATE (**)	107	162	42	146	11	7 147	3.9	5 193	3.1	91 391	75.6
OTHERS	199	273	56	247	43	3 712.0	11	4 108.0	13	47 749.0	160
TOTAL	4 076	5 440	1 293	4 647	495	501 577	10 405.0	398 329	8 594.2	4 563 846	70 899.7

(*) Futures on Commodities are included

(**) Futures on Interest rate are included

ISSUERS

ABAXBANK	74	95	15	65	23	163	3.4	168	1.5	2 631	91.4
ABN AMRO BANK	327	484	25	418	16	23 103	123.6	14 681	74.1	287 534	1 613.9
BANCA ALETTI	-	59	6	62	3	8 958	772.9	7 937	813.4	56 514	5 093.8
BANCA ANTONVENETA	84	153	40	137	-	10 495	11.5	6 733	7.4	121 835	142.9
BANCA CABOTO	485	644	175	508	-	36 561	1 250.2	37 170	1 083.1	222 471	3 130.9
BANCA IMI	229	341	2	481	157	71 132	1 431.9	60 926	1 393.7	240 552	5 950.4
BANCA NAZ LAVORO	42	-	-	-	-	-	-	-	-	478	1.2
CITIGROUP GLOBAL MARKETS DEUTSCHL/	7	7	-	-	-	51	8.0	51	11.7	250	25.6
COMMERZBANK	4	4	-	4	-	-	-	-	-	3	0.0
DEUTSCHE BANK AG	386	372	23	351	88	67 041	2 313.6	63 095	2 009.7	714 856	21 208.8
GOLDMAN SACHS	581	555	-	229	-	119 075	389.4	67 098	177.8	1 409 445	5 603.3
GOLDMAN SACHS JERSEY LIMITED	-	374	273	560	196	39 520	920.6	56 486	398.2	101 334	1 421.5
JP MORGAN CHASE BANK	-	1	-	1	-	55	0.7	22	0.2	119	1.6
MERRILL LYNCH	18	14	-	14	-	116	0.8	54	0.3	516	5.5
SAL OPPENHEIM	37	33	3	8	-	219	1.1	148	1.5	3 068	18.4
SOCIETE GENERALE	552	814	273	506	12	43 878	1 316.8	30 592	1 109.2	584 290	8 867.0
SOCIETE GENERALE ACCEPTANCE N.V.	-	12	6	12	-	1 031	12.1	884	10.1	2 783	32.4
UBS AG	26	306	-	240	-	750	15.0	367	4.1	3 120	34.4
UNICREDIT BANCA MOBILIARE	-	1	1	1	-	210	2.4	129	1.4	339	3.8
UNICREDITO ITALIANO	1 224	1 171	451	1 050	-	79 219	1 830.9	51 788	1 496.9	811 708	17 652.9
TOTAL	4 076	5 440	1 293	4 647	495	501 577	10 405.0	398 329	8 594.2	4 563 846	70 899.7

**TURNOVER
MONTHLY FIGURES - eur m**

**TURNOVER BY TYPOLOGIES
eur m**

**MOST TRADED UNDERLYING ASSETS
IN TERMS OF NUMBER OF TRADES**

UNDERLYING ASSET	DECEMBER 2006			
	TRADES			DAILY AVERAGE
	NUMBER	% TOT	% CUM	
S&P/MIB	177 812	44.64%	44.64%	9 359
ENI	36 082	9.06%	53.70%	1 899
DAX	33 630	8.44%	62.14%	1 770
NASDAQ 100	25 419	6.38%	68.52%	1 338
STMICROELECTRONICS	15 483	3.89%	72.41%	815
FIAT	13 953	3.50%	75.91%	734
GENERALI	10 488	2.63%	78.54%	552
ALITALIA	7 410	1.86%	80.41%	390
TELECOM ITALIA	6 326	1.59%	81.99%	333
SAN PAOLO IMI	6 234	1.57%	83.56%	328

**MOST TRADED UNDERLYING ASSETS
IN TERMS OF TURNOVER**

UNDERLYING ASSET	DECEMBER 2006			
	TURNOVER			DAILY AVERAGE
	eur m	% TOT	% CUM	
S&P/MIB	3 975.29	46.26%	46.26%	209.23
ENI	2 080.20	24.20%	70.46%	109.48
DAX	932.88	10.85%	81.32%	49.10
SAN PAOLO IMI	538.85	6.27%	87.59%	28.36
STMICROELECTRONICS	220.85	2.57%	90.15%	11.62
FIAT	162.74	1.89%	92.05%	8.57
GENERALI	124.36	1.45%	93.50%	6.55
ENEL	98.26	1.14%	94.64%	5.17
UNICREDITO ITALIANO	89.00	1.04%	95.67%	4.68
NASDAQ 100	61.28	0.71%	96.39%	3.23

MOST TRADED INSTRUMENTS

PLAIN VANILLA COVERED WARRANTS - DECEMBER 2006					LEVERAGE CERTIFICATES - DECEMBER 2006				
ISIN	ISSUER	UNDERLYING	MKTG NAME	TURNOV. eur m	ISIN	ISSUER	UNDERLYING	MKTG NAME	TURNOV. eur m
DE000DB72720	DEUTSCHE BANK AG	DAX	PLAIN VANILLA	636.54	NL0000722312	ABN AMRO BANK	DAX	MINI FUTURES	5.24
FR0010346106	SOCIETE GENERALE	S&P/MIB	PLAIN VANILLA	596.43	NL0000722148	ABN AMRO BANK	S&P/MIB	MINI FUTURES	3.77
FR0010386987	SOCIETE GENERALE	S&P/MIB	PLAIN VANILLA	278.86	NL0000722155	ABN AMRO BANK	S&P/MIB	MINI FUTURES	3.05
IT0004072689	BANCA CABOTO	S&P/MIB	PLAIN VANILLA	172.83	DE000DB012Y0	DEUTSCHE BANK AG	DAX	WAVE	2.58
IT0004105190	BANCA CABOTO	S&P/MIB	PLAIN VANILLA	171.06	NL0000722254	ABN AMRO BANK	DAX	MINI FUTURES	2.20

STRUTTURATI/ESOTICI - DECEMBER 2006					INVESTMENT CERTIFICATES - DECEMBER 2006				
ISIN	ISSUER	UNDERLYING	MKTG NAME	TURNOV. eur m	ISIN	ISSUER	UNDERLYING	MKTG NAME	TURNOV. eur m
IT0004081706	BANCA ANTONVENETA	EURIBOR 3M	EURIBOR CAP	0.27	IT0004032790	BANCA ALETTI	ENI	BORSA PROTETTA	407.94
IT0003942726	BANCA ANTONVENETA	EURIBOR 3M	EURIBOR CAP	0.21	DE000DB026Y0	DEUTSCHE BANK AG	ENI	EURO EQUITY PROTECTION	293.67
IT0003942585	BANCA ANTONVENETA	EURIBOR 3M	EURIBOR CAP	0.15	IT0004094451	UNICREDITO ITALIANO	ENI	EQUITY PROTECTION	267.76
IT0003921258	BANCA ANTONVENETA	EURIBOR 3M	EURIBOR CAP	0.13	IT0004032816	BANCA ALETTI	SAN PAOLO IMI	BORSA PROTETTA	221.28
IT0004081722	BANCA ANTONVENETA	EURIBOR 3M	EURIBOR CAP	0.12	DE000DB025Y2	DEUTSCHE BANK AG	ENI	EURO EQUITY PROTECTION	185.76

News

Banca IMI - Issue Program Reflex, Reflex Quanto, Reflex Short, Reflex Short Quanto, Twin Win, Bonus, Equity Protection, Equity Protection Capped on commodities, baskets on commodities, commodity futures, futures on commodity indices, commodity indices, indices, baskets on indices and shares

Nomura - Issue Program Bonus Quanto and not on indices

Daily trading record - On December 15th, 2006 the new trading record on SeDeX was established. On that date the countervalue of all trades amounted to € 603,1 million and broke the record achieved on November 22nd, 2006.

Glossary

Plain Vanilla: plain vanilla Covered Warrants
 IC - Benchmark: linear tracking of the underlying
 IC - Bonus: minimum return guaranteed in case of moderate decline
 IC - Equity Protection: (partial/total) protection from decline
 IC - Discount: purchase of the underlying at a discounted price

IC - Structured: combination of different options
 LC - Stop Loss: certificates with a knock-out barrier and leverage effect
 LC - Stop Loss R: Stop Loss with daily update of the strike
 CW SE - Exotics on Exchange Rates: CWs on interest rates and with periodic exercise
 CW SE - Rainbow: CWs on a ratio of two assets