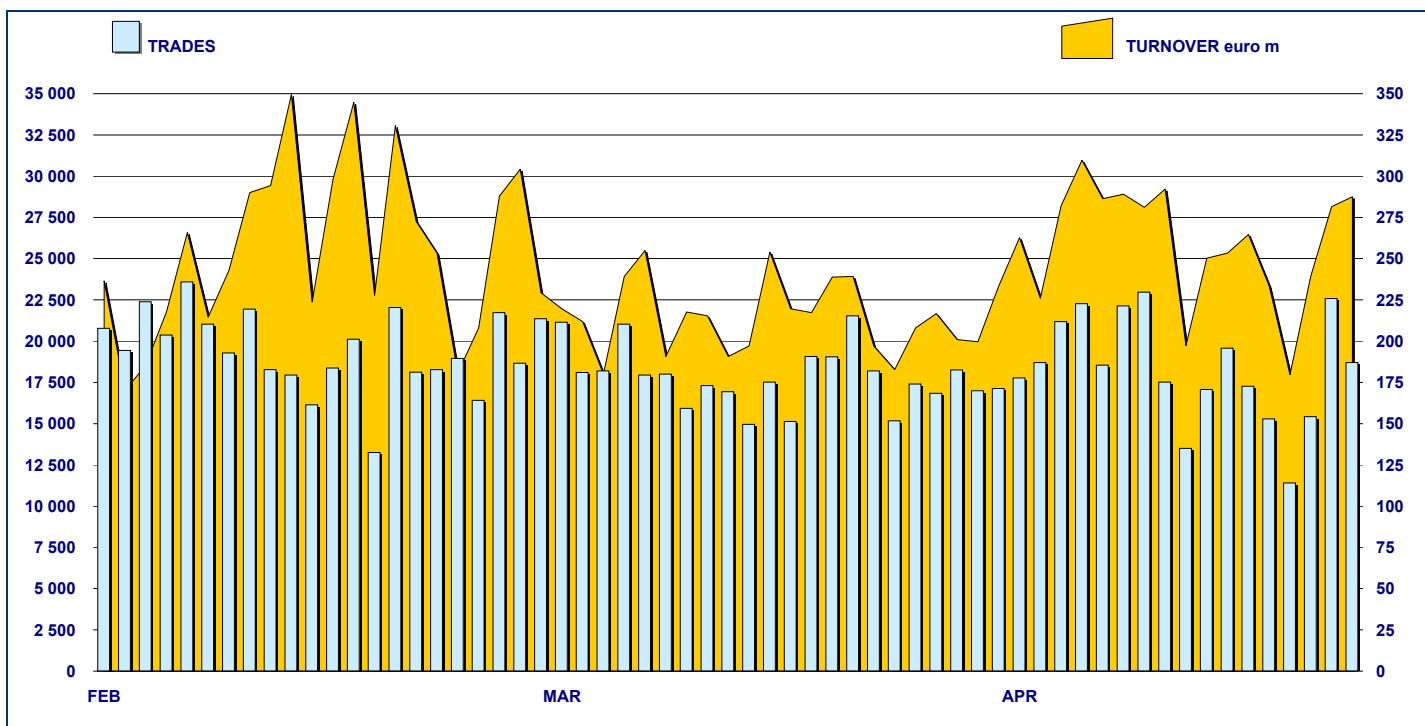


### SECURITISED DERIVATIVES DAILY TURNOVER



### MAIN INDICATORS

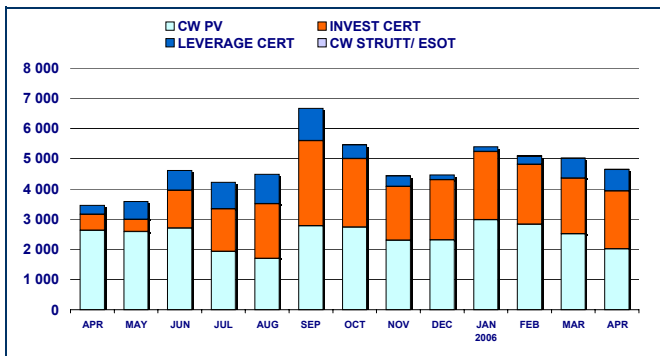
#### LISTED SeDeX

#### TRADING

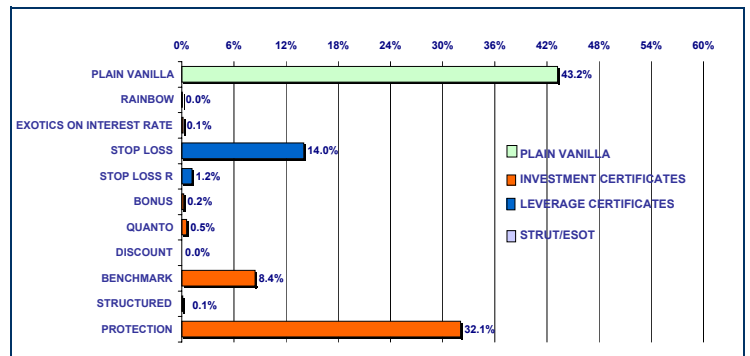
	DEC 2005		MARCH 2006		APRIL 2006		MARCH 2006		APRIL 2006		JAN-APR 2006	
	LISTED END OF MONTH	LISTED END OF MONTH	MONTH NEW LISTED	LISTED END OF MONTH	MONTH NEW LISTED	TRADES number	TURNOVER eur m	TRADES number	TURNOVER eur m	TRADES number	TURNOVER eur m	
<b>MARKET SEGMENTS</b>												
PLAIN VANILLA CW	3 189	3 116	617	3 574	542	333 734	2 512.7	257 469	2 009.4	1 266 417	10 330.1	
STRUTTURATI / ESOTICI CW	151	152	-	218	66	9 629	13.1	6 505	8.2	26 527	42.1	
LEVERAGE CERTIFICATES	290	398	71	406	35	45 532	656.5	40 206	707.7	142 475	1 791.8	
INVESTMENT CERTIFICATES	446	531	46	586	56	25 860	1 842.3	24 869	1 924.5	110 686	7 999.7	
<b>TOTAL</b>	<b>4 076</b>	<b>4 197</b>	<b>734</b>	<b>4 784</b>	<b>699</b>	<b>414 755</b>	<b>5 024.7</b>	<b>329 049</b>	<b>4 649.8</b>	<b>1 546 105</b>	<b>20 163.8</b>	
<b>UNDERLYING ASSETS</b>												
DOMESTIC SHARES	1 821	1 800	405	2 149	355	104 127	1 461.1	74 408	1 306.7	381 911	6 226.0	
DOMESTIC INDICES	460	465	102	499	57	139 879	1 275.2	131 387	1 453.9	552 522	4 901.5	
FOREIGN SHARES	494	496	101	612	130	19 017	559.1	14 985	428.6	68 507	1 740.8	
FOREIGN INDICES	782	861	78	864	45	133 205	1 681.9	90 508	1 389.7	473 210	7 060.5	
OTHERS	519	575	48	660	112	18 527	47.3	17 761	70.9	69 955	234.9	
<b>TOTAL</b>	<b>4 076</b>	<b>4 197</b>	<b>734</b>	<b>4 784</b>	<b>699</b>	<b>414 755</b>	<b>5 024.7</b>	<b>329 049</b>	<b>4 649.8</b>	<b>1 546 105</b>	<b>20 163.8</b>	
<b>ISSUERS</b>												
ABAXBANK	74	103	31	168	66	220	8.6	325	7.0	963	35.3	
ABN AMRO BANK	327	512	70	528	35	20 949	108.3	19 454	117.7	84 474	480.9	
BANCA ALETTI	-	-	-	51	51	-	-	1 327	105.5	1 327	105.5	
BANCA ANTONVENETA	84	84	-	84	-	9 477	7.0	6 431	6.9	25 928	18.7	
BANCA CABOTO	485	404	-	569	165	14 995	25.3	8 035	14.2	59 082	97.6	
BANCA IMI	229	152	2	274	122	7 024	83.8	6 058	358.1	46 213	1 830.1	
BANCA NAZ LAVORO	42	42	42	42	-	15	0.02	27	0.04	163	0.7	
CITIGROUP GLOBAL MARKETS DEUTSCH	7	7	-	7	-	15	0.7	4	0.1	62	4.3	
COMMERZBANK	4	4	-	4	-	-	-	-	-	1	0.004	
DEUTSCHE BANK AG	386	466	95	492	33	77 389	2 072.6	61 876	1 529.9	259 148	7 500.7	
GOLDMAN SACHS	581	748	208	921	205	135 834	449.3	103 909	566.1	549 936	1 705.1	
MERRILL LYNCH	18	18	-	17	-	66	0.5	60	2.4	209	3.8	
SAL OPPENHEIM	37	6	-	28	22	194	7.1	101	0.8	1 880	12.6	
SOCIETE GENERALE	552	638	161	626	-	59 573	525.0	54 476	582.8	219 807	2 108.9	
UBS AG	26	110	84	110	-	119	0.3	183	0.6	308	1.0	
UNICREDITO ITALIANO	1 224	903	41	863	-	88 885	1 736.2	66 783	1 357.7	296 604	6 258.5	
<b>TOTAL</b>	<b>4 076</b>	<b>4 197</b>	<b>734</b>	<b>4 784</b>	<b>699</b>	<b>414 755</b>	<b>5 024.7</b>	<b>329 049</b>	<b>4 649.8</b>	<b>1 546 105</b>	<b>20 163.8</b>	



**TURNOVER  
MONTHLY FIGURES - eur m**



**TURNOVER BY TYPOLOGIES  
MONTHLY FIGURES - eur m**



**MOST TRADED UNDERLYING ASSETS  
IN TERMS OF NUMBER OF TRADES**

UNDERLYING ASSET	APRIL 2006			
	TRADES			DAILY AVERAGE
	NUMBER	% TOT	% CUM	
S&P/MIB	131 151	39.86%	39.86%	7 286
DAX	46 814	14.23%	54.08%	2 601
NASDAQ 100	30 397	9.24%	63.32%	1 689
ENI	22 151	6.73%	70.05%	1 231
STMICROELECTRONICS	12 704	3.86%	73.92%	706
FIAT	10 187	3.10%	77.01%	566
TELECOM ITALIA	6 799	2.07%	79.08%	378
EURIBOR 3M	6 431	1.95%	81.03%	357
UNICREDITO ITALIANO	4 730	1.44%	82.47%	263
NIKKEI 225	4 221	1.28%	83.75%	235

**MOST TRADED UNDERLYING ASSETS  
IN TERMS OF TURNOVER**

UNDERLYING ASSET	APRIL 2006			
	TURNOVER			DAILY AVERAGE
	eur m	% TOT	% CUM	
S&P/MIB	1 452.02	31.23%	31.23%	80.67
ENI	1 112.64	23.93%	55.16%	61.81
DAX	949.79	20.43%	75.58%	52.77
STMICROELECTRONICS	415.30	8.93%	84.51%	23.07
DOW JONES INDUSTRIAL AVG	134.69	2.90%	87.41%	7.48
S&P 500	96.01	2.06%	89.48%	5.33
FIAT	61.51	1.32%	90.80%	3.42
NASDAQ 100	51.80	1.11%	91.91%	2.88
NIKKEI 225	51.34	1.10%	93.02%	2.85
DOW JONES EURO STOXX 50	42.89	0.92%	93.94%	2.38

**MOST TRADED INSTRUMENTS**

PLAIN VANILLA COVERED WARRANTS - APRIL 2006					LEVERAGE CERTIFICATES - APRIL 2006				
ISIN	ISSUER	UNDERLYIN	MKTG NAME	TURNOV. eur m	ISIN	ISSUER	UNDERLYING	MKTG NAME	TURNOV. eur m
IT0003971675	UNICREDITO ITALIANO	S&P/MIB	PLAIN VANILLA	291.68	DE000DB09067	DEUTSCHE BANK AG	DAX	WAVE	351.31
GB00B0XPDN59	GOLDMAN SACHS	S&P/MIB	PLAIN VANILLA	221.72	DE000DB09075	DEUTSCHE BANK AG	DAX	WAVE	211.48
DE000DB04322	DEUTSCHE BANK AG	DAX	PLAIN VANILLA	206.16	DE000DB09083	DEUTSCHE BANK AG	DAX	WAVE	25.78
FR0010299495	SOCIETE GENERALE	S&P/MIB	PLAIN VANILLA	129.98	DE000DB09091	DEUTSCHE BANK AG	DAX	WAVE	14.53
FR0010267062	SOCIETE GENERALE	S&P/MIB	PLAIN VANILLA	126.57	DE000DB09901	DEUTSCHE BANK AG	S&P/MIB	WAVE	5.23

STRUTTURATI/ESOTICI - APRIL 2006					INVESTMENT CERTIFICATES - APRIL 2006				
ISIN	ISSUER	UNDERLYIN	MKTG NAME	TURNOV. eur m	ISIN	ISSUER	UNDERLYING	MKTG NAME	TURNOV. eur m
IT0003999262	ABAXBANK	MEDIASET VS HEDGE WARRANT		0.65	IT0003741730	UNICREDITO ITALIANO	ENI	EQUITY PROTECTION	311.56
IT0003921258	BANCA ANTONVENETA	EURIBOR 3M	EURIBOR CAP	0.59	IT0003741714	UNICREDITO ITALIANO	ENI	EQUITY PROTECTION	309.36
IT0003942791	BANCA ANTONVENETA	EURIBOR 3M	EURIBOR CAP	0.58	IT0003824270	BANCA IMI	DOW JONES I	REFLEX	133.80
IT0003942650	BANCA ANTONVENETA	EURIBOR 3M	EURIBOR CAP	0.53	IT0003841746	UNICREDITO ITALIANO	ENI	EQUITY PROTECTION	128.48
IT0003921209	BANCA ANTONVENETA	EURIBOR 3M	EURIBOR CAP	0.50	DE000DB03623	DEUTSCHE BANK AG	ENI	EQUITY PROTECTION	122.46

**News**

Unicredito Italiano Warrant and Certificate Programme

**Glossary**

Plain Vanilla: plain vanilla Covered Warrants  
 IC - Benchmark: linear tracking of the underlying  
 IC - Bonus: minimum return guaranteed in case of moderate decline  
 IC - Equity Protection: (partial/total) protection from decline  
 IC - Discount: purchase of the underlying at a discounted price  
 IC - Quanto: Benchmark independent from exchange rate  
 IC - Structured: combination of different options  
 LC - Stop Loss: certificates with a knock-out barrier and leverage effect  
 LC - Stop Loss R: Stop Loss with daily update of the strike  
 CW SE - Cap: CWs on interest rates and with periodic exercise  
 CW SE - Rainbow: CWs on a ratio of two assets



Research & Development  
 Piazza degli Affari, 6 - 20123 - Milano  
 Tel +39 02 72426.478 - Fax +39 02 8646.4323  
 e-mail: research@borsaitaliana.it  
[www.borsaitaliana.it](http://www.borsaitaliana.it)