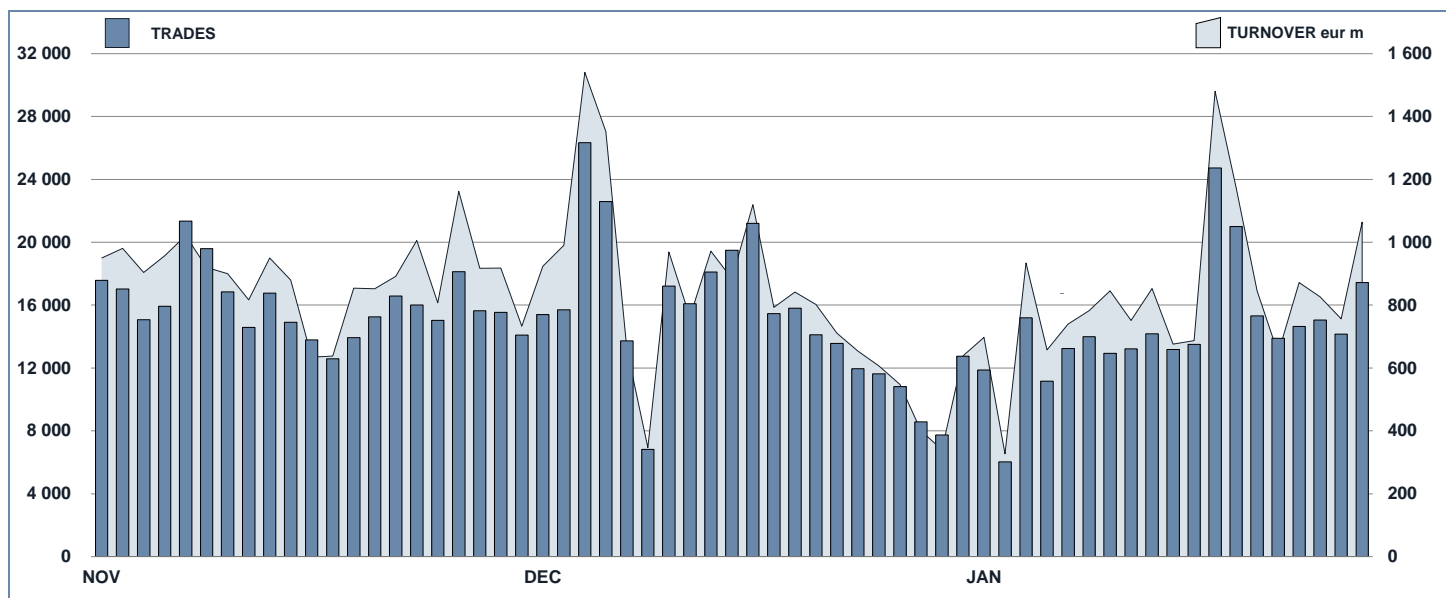




MOT Statistics

January 2016

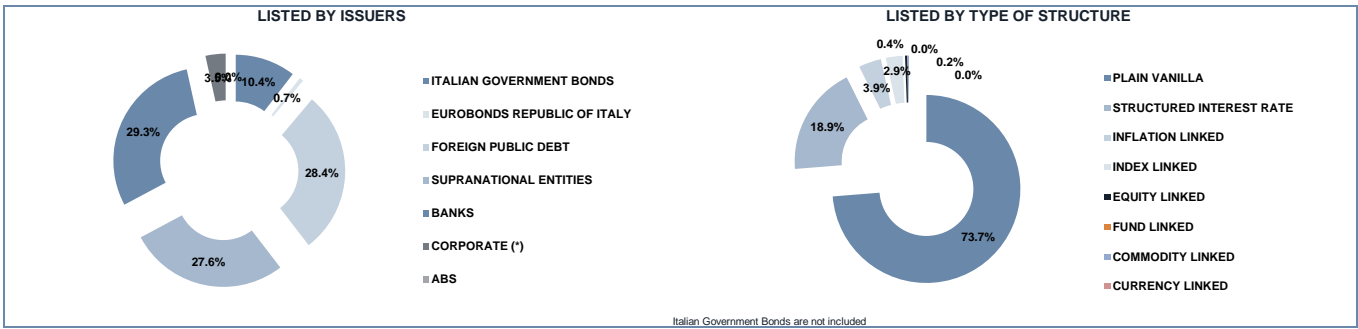
MOT DAILY TURNOVER



MAIN INDICATORS

	LISTED BOND					TRADING						
	DEC 2014		DECEMBER 2015		JANUARY 2016		NOVEMBER 2015		DECEMBER 2015		JANUARY 2016	
	LISTED END OF MONTH	LISTED END OF MONTH	NEW LISTED BEGIN OF JAN 2015	LISTED END OF MONTH	NEW LISTED BEGIN OF JAN 2016	TRADES number	TURNOVER eur m	TRADES number	TURNOVER eur m	TRADES number	TURNOVER eur m	
MARKET SEGMENTS												
ITALIAN GOVERNMENT BONDS	113	117	41	117	2	234 030	16 847.3	200 908	14 732.6	194 010	14 873.3	
BONDS	456	307	19	307	1	41 474	888.5	54 634	789.1	49 658	685.2	
EUROBONDS and ABSs	538	685	219	698	19	60 686	954.0	46 762	693.4	43 787	693.8	
of which BONDS IN DISTRIBUTION	-	-	11	-	-	2 468	240.5	-	-	-	-	
TOTAL	1 107	1 109	279	1 122	22	336 190	18 689.8	302 304	16 215.1	287 455	16 252.3	
ISSUERS												
ITALIAN GOVERNMENT BONDS	113	117	41	117	2	234 030	16 847.3	200 908	14 732.6	194 010	14 873.3	
EUROBONDS REPUBLIC OF ITALY	10	9	1	8	-	2 841	66.5	3 314	64.7	2 223	42.9	
FOREIGN PUBLIC DEBT	273	311	65	319	9	20 855	328.3	15 445	232.9	16 235	255.9	
SUPRANATIONAL ENTITIES	228	309	109	310	5	23 471	349.3	18 122	250.6	17 007	258.6	
BANKS	457	324	44	329	6	36 683	584.1	54 798	776.7	49 795	682.1	
CORPORATE (*)	26	39	19	39	-	18 310	514.2	9 717	157.6	8 185	139.5	
ABS	-	-	-	-	-	-	-	-	-	-	-	
TOTAL	1 107	1 109	279	1 122	22	336 190	18 689.8	302 304	16 215.1	287 455	16 252.3	
(*) BOC and BOP are included												
TYPE OF STRUCTURE												
PLAIN VANILLA	713	733	214	741	15	75 538	1 485.4	73 796	1 093.1	63 791	961.0	
STRUCTURED INTEREST RATE	193	185	18	190	5	25 519	343.4	26 471	374.0	28 588	405.8	
INFLATION LINKED	42	39	3	39	-	397	8.0	458	9.4	472	6.8	
INDEX LINKED	38	29	3	29	-	652	5.3	641	5.9	570	5.2	
EQUITY LINKED	5	4	-	4	-	40	0.3	23	0.2	19	0.2	
FUND LINKED	-	-	-	-	-	-	-	-	-	-	-	
COMMODITY LINKED	2	-	-	2	-	7	0.0	7	0.0	5	0.0	
CURRENCY LINKED	1	2	-	-	-	7	0.1	-	-	-	-	
ITALIAN GOVERNMENT BONDS	113	117	41	117	2	234 030	16 847.3	200 908	14 732.6	194 010	14 873.3	
TOTAL	1 107	1 109	279	1 122	22	336 190	18 689.8	302 304	16 215.1	287 455	16 252.3	

FOCUS ON LISTED BONDS - END OF MONTH



Italian Government Bonds are not included

ISSUERS - MOST TRADED BONDS IN TERMS OF TURNOVER

ITALIAN GOVERNMENT BONDS - JANUARY 2016				FOREIGN PUBLIC DEBT - JANUARY 2016			
ISIN	DESC	eur m	TRADES	ISIN	DESC	eur m	TRADES
IT0005083057	BTP TF 3,25% ST46 EUR	2.202,37	35.654	PT050E00007	PORTUGAL TF 4,1% AP37 EUR	33,31	1.542
IT0005094088	BTP TF 1,65% MZ32 EUR	1.520,38	29.828	PT050E00020	PORTUGAL TF 4,1% FB45 EUR	18,08	1.115
IT0003934657	BTP-1FB37 4%	890,32	16.497	DE0001102374	BUND TF 0,5% FB25 EUR	11,81	159
IT0005090318	BTP TF 1,50% GN25 EUR	878,31	9.475	GR0114028534	GGB TF 4,75% AP19 EUR	11,04	1.149
IT0004969207	BTP ITALIA NV17 EUR	483,75	5.616	US731011A195	POLAND TF 3% MZ23 USD	10,44	608

EUROBONDS REPUBLIC OF ITALY - JANUARY 2016				SUPRANATIONAL ENTITIES - JANUARY 2016			
ISIN	DESC	eur m	TRADES	ISIN	DESC	eur m	TRADES
US465410BG26	ITALY 33USD 5,375	23,57	1.366	XS0648456167	EIB LG18 TRY 9,25	18,75	1.107
US465410AH18	ITALY SET23USD 6,875	9,45	459	XS0848049838	EIB TF 6% OT19 ZAR	12,72	1.048
XS0100888190	ITALY 19EUR FRN	4,43	178	XS1014703851	EIB TF 10,5% DC17 BRL	8,50	1.147
XS0098449456	ITALY 29EUR FRN	4,08	201	US298785F247	EIB TF 1% DC17 USD	8,25	191
US465410BS63	ITALY 17USD 5,375	0,58	6	XS1110395933	EIB TF 8,5% ST24 ZAR	6,78	506

BANKS - JANUARY 2016				CORPORATE - JANUARY 2016			
ISIN	DESC	eur m	TRADES	ISIN	DESC	eur m	TRADES
IT0004966823	BANCO POP TF 5,50% NV20 LT2 AMORT EUR	71,89	5.994	IT0005090995	CDP MC MZ22 EUR	34,47	1.466
IT0005120313	BANCO POP TV EUR3M+4,375 LG22 SUB TIER2	39,27	3.388	IT0005108490	AUTOSTRADE TF 1,625% GN23 EUR	23,23	893
IT0004942370	UBI TF 6% OT19 LT2 AMORT EUR	28,37	2.460	XS1308621846	IVS GROUP TF 4,5% 2015-2022 EUR	17,43	1.205
IT0004720438	MEDIABANCA GN21 TV QUARTO ATTO SUB LOWT2	27,97	1.232	XS1042118106	GE COMPANY TF 2,5% MZ20 USD	6,86	439
IT0004917842	MEDIABANCA TF 5,75% AP23 LT2 EUR	25,77	1.637	IT0005075533	ALERION CLEAN POWER TF 2015-2022 EUR	4,91	462

TYPE OF STRUCTURE - MOST TRADED BONDS IN TERMS OF TURNOVER

PLAIN VANILLA - JANUARY 2016				STRUCTURED INTEREST RATE - JANUARY 2016			
ISIN	DESC	eur m	TRADES	ISIN	DESC	eur m	TRADES
IT0005083057	BTP TF 3,25% ST46 EUR	2.202,37	35.654	IT0005090995	CDP MC MZ22 EUR	34,47	1.466
IT0005094088	BTP TF 1,65% MZ32 EUR	1.520,38	29.828	IT0004720438	MEDIABANCA GN21 TV QUARTO ATTO SUB LOWT2	27,97	1.232
IT0003934657	BTP-1FB37 4%	890,32	16.497	IT0004771710	MPS NV17 STEPBYSTEP EUR BPOSTA 6ANNI	24,66	1.642
IT0005090318	BTP TF 1,50% GN25 EUR	878,31	9.475	XS1341083555	IMI COLLEZIO MC GE26 EUR	23,01	658
IT0005137614	CCT-EU TV EUR6M+0,7% DC22 EUR	465,92	2.303	IT0004739576	MPS 11/17 MC EUR BANCOPOSTA3 CAP&FLOOR	20,94	1.829

INFLATION LINKED - JANUARY 2016				INDEX LINKED - JANUARY 2016			
ISIN	DESC	eur m	TRADES	ISIN	DESC	eur m	TRADES
IT0004969207	BTP ITALIA NV17 EUR	483,75	5.616	IT0004909682	MEDIABANCA MB16 INDEX LINKED MC GN18 EUR	1,50	52
IT0005012783	BTP ITALIA AP20 EUR	441,41	5.028	XS1233613188	WORLD BANK MC LG23 USD GREEN GROWTH BOND	1,07	155
IT0005105843	BTP ITALIA AP23 EUR	384,13	4.334	IT0004938149	MEDIABANCA MB22 INDEX LINKED MC AG21 EUR	0,35	34
IT0004917958	BTP ITALIA AP17 EUR	369,09	4.633	IT0004924004	MEDIABANCA SINTESI T MISTO MC NV21 EUR	0,29	35
IT0004963608	BTP ITALIA OT16 EUR	319,08	3.850	IT0004959809	MEDIABANCA MB26 INDEX LINKED MC OT21 EUR	0,20	37

EQUITY LINKED - JANUARY 2016				OTHERS (*) - JANUARY 2016			
ISIN	DESC	eur m	TRADES	ISIN	DESC	eur m	TRADES
IT0006719584	MACQUARIE STR SEC AP17 STEP UP ENERGY	0,12	12	XS0638296920	BOFA GN18 MC INVEST BOND ORO	0,03	5
DE000UB8DSR5	UBS LG17 MC EUR EQUITY LINKED AUTOCALL	0,06	5				
IT0006719956	MACQUARIE STR SEC GN17MC STEPUP SVILUPPO	0,05	1				
IT0006721366	MACQUARIE STR SEC OT17 MC EUR 6% X	0,00	1				

(*) Fund Linked, Commodity Linked and Currency Linked are included

News

In January, 2 Italian Government bonds and the following instruments were listed on MOT market:

- EIB EUR 0,00 per cent. EARNs due 15 January 2019(XS1350662737)
- EIB SEK 1,250 per cent. Bonds due 12th May, 2025(XS1171478143)
- EIB BRL 12,00 per cent. Bonds due 27th June, 2019 (payable in EUR)(XS1347819390)
- IFC BRL 11,50 per cent. Notes due October 30, 2020 (payable in USD)(XS1313203298)
- Banca IMI S.p.A. Collezione Tasso Misto Dollaro USA serie III (XS1341083639)
- Banca IMI S.p.A. Collezione Tasso Misto Euro serie I (XS1341083555)
- Bonos 0,25% due on 31/01/2019(ES00000128A0)
- OAT 0% due on 25th February 2019(FR0013101466)
- Issue of USD 100,000,000 Ten-Year Fixed-to-Floating Rate Notes, due January 15, 2026 (XS1267261805)
- Republic of Poland 1,500 per cent. Notes due 19 January 2026(XS1346201616)
- Republic of Poland 2,375 per cent. Notes due 18 January 2036(XS1346201889)
- Obligaciones 1,95% due on 30/04/2028(ES00000127Z9)
- Obligaciones 2,875% due on 21st July 2028(PT0TET0E0012)
- Kingdom of Belgium 1% notes due 22/06/2028(BE0000337460)
- EIB USD 2,000% Notes Due 2021(US298785HA77)
- KFW USD 1,500% Global Notes due 2019(US500769GV07)
- Republic of Ireland EUR 1 per cent. notes due on 15th May 2026(IE0008V8C9418)
- Bund 0,5% due on 15th February 2026(DE0001102390)
- Issue of EUR 80 000 000 Notes due 04/01/2028 (XS1236574627)
- Issue of USD 80 000 000 Notes due 04/01/2028 (XS1236580517)

Markets Analysis
 Piazza degli Affari, 6 - 20123 Milano
 T +39 02 724261 | Fax +39 02 8646.4323
 e-mail: markets_analysis@borsaitaliana.it
 www.borsaitaliana.it

This document contains text, data, graphics, photographs, illustrations, artwork, names, logos, trade marks, service marks and information ("Information") connected with Borsa Italiana S.p.A. ("Borsa Italiana"). All reasonable efforts have been made to ensure that the Information in this document was correct at the time of publication. However, Borsa Italiana Spa accepts no liability for decisions taken, or systems-related or other work carried out by any party based on this document. The publication of this document does not represent solicitation, by Borsa Italiana, of public saving and is not to be considered as a recommendation by Borsa Italiana as to the suitability of the investment, if any, herein described.