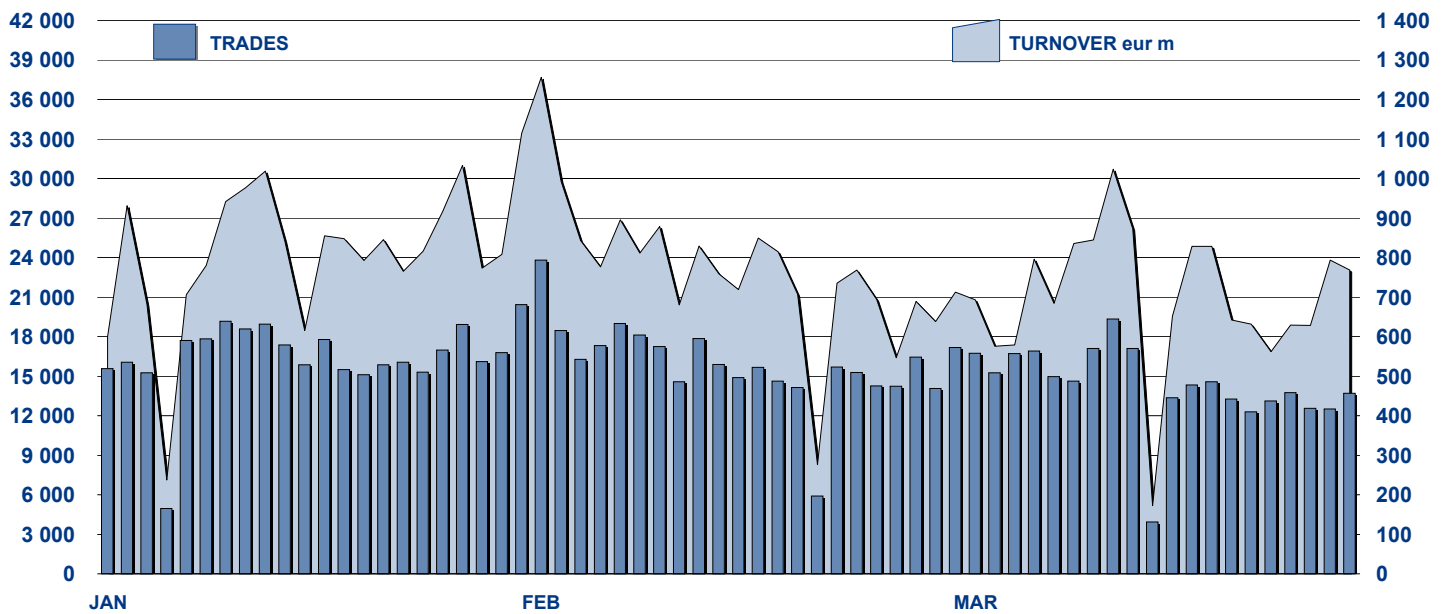


MOT DAILY TURNOVER



MAIN INDICATORS

LISTED BOND

TRADING

	DEC 10		FEBRUARY 2011		MARCH 2011		FEBRUARY 2011		MARCH 2011		JAN-MAR 2011	
	LISTED END OF MONTH	LISTED END OF MONTH	NEW LISTED BEGIN OF JAN 2011	LISTED END OF MONTH	NEW LISTED BEGIN OF JAN 2011	TRADES number	TURNOVER eur m	TRADES number	TURNOVER eur m	TRADES number	TURNOVER eur m	
MARKET SEGMENTS												
ITALIAN GOVERNMENT BONDS	98	99	6	99	10	235 139	14 376.7	236 675	14 391.3	727 349	44 052.1	
BONDS	355	360	11	362	15	71 916	1 064.4	81 015	1 169.7	222 912	3 263.0	
EUROBONDS and ABSs	270	298	34	301	42	16 569	505.9	16 154	519.3	48 872	1 496.4	
TOTAL	723	757	51	762	67	323 624	15 947.0	333 844	16 080.3	999 133	48 811.6	
ISSUERS												
ITALIAN GOVERNMENT BONDS	98	99	6	99	10	235 139	14 376.7	236 675	14 391.3	727 349	44 052.1	
EUROBONDS REPUBLIC OF ITALY	17	16	-	16	-	1 643	36.0	1 767	33.7	5 265	105.2	
FOREIGN PUBLIC DEBT	149	159	12	160	15	7 253	210.0	7 795	233.3	23 835	693.1	
SUPRANATIONAL ENTITIES	124	144	21	145	24	10 128	246.2	10 720	267.5	29 335	716.5	
BANKS	319	324	12	327	17	57 644	923.9	63 569	988.7	175 628	2 773.8	
CORPORATE (*)	14	13	-	14	1	11 802	153.5	13 311	165.6	37 654	469.4	
ABS	2	2	-	1	-	15	0.6	7	0.0	67	1.5	
TOTAL	723	757	51	762	67	323 624	15 947.0	333 844	16 080.3	999 133	48 811.6	

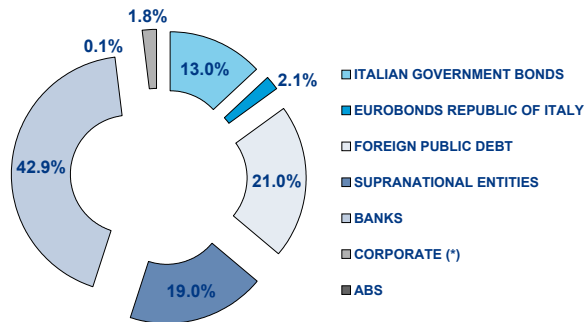
(*) BOC and BOP are included

TYPE OF STRUCTURE

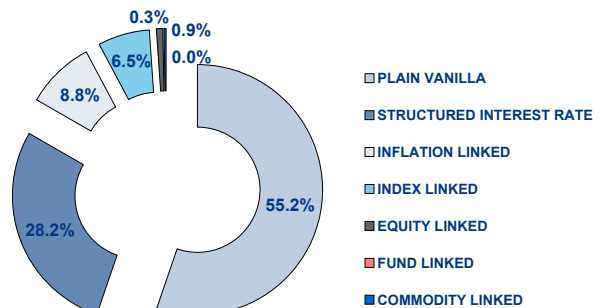
PLAIN VANILLA	334	361	37	364	45	44 245	860.4	50 642	989.6	140 737	2 696.0
STRUCTURED INTEREST RATE	180	186	6	186	7	25 341	411.4	26 475	374.2	75 816	1 180.1
INFLATION LINKED	57	57	2	58	3	8 133	140.4	9 327	173.0	24 992	448.8
INDEX LINKED	43	43	-	43	1	9 874	145.1	9 878	141.0	27 620	396.2
EQUITY LINKED	6	6	-	6	-	727	10.1	704	8.7	2 041	26.9
FUND LINKED	-	-	-	-	-	-	-	-	-	-	-
COMMODITY LINKED	2	2	-	2	-	164	2.8	140	2.4	574	11.3
CURRENCY LINKED	3	3	-	4	1	1	0.0	3	0.1	4	0.1
ITALIAN GOVERNMENT BONDS	98	99	6	99	10	235 139	14 376.7	236 675	14 391.3	727 349	44 052.1
TOTAL	723	757	51	762	67	323 624	15 947.0	333 844	16 080.3	999 133	48 811.6

FOCUS ON LISTED BONDS - END OF MONTH

LISTED BY ISSUERS



LISTED BY TYPE OF STRUCTURE



Italian Government Bonds are not included

ISSUERS - MOST TRADED BONDS IN TERMS OF TURNOVER

ITALIAN GOVERNMENT BONDS - March 2011

ISIN	DESC	eur m	TRADES
IT0004620305	C.C.T. EU 15/06/2010 - 15/12/2015	705.52	9 130
IT0004656275	B.T.P. 01/11/2010-01/11/2015 TF 3% EUF	702.33	8 348
IT0004634132	BTP 10/21 TF 3.75% EUR	689.99	8 517
IT0004695075	B.T.P. 11/21 TF 4.75% EUR	666.46	5 780
IT0004652175	C.C.T. EU 15/10/2010 -15/10/2017 TV EU	550.20	6 591

FOREIGN PUBLIC DEBT - March 2011

ISIN	DESC	eur m	TRADES
DE0001135408	BUND 10/20 TF 3% EUR	17.03	289
DE0001141596	BOBL 11/16 TF 2% EUR	10.95	50
DE0001135291	BUND 05/16 TF 3.5% EUR	10.45	52
DE0001137263	SCHATZ 09/11 TF 1.5% EUR	9.76	18
DE0001137339	SCHATZ 11/13 TF 1.5% EUR	9.70	67

EUROBONDS REPUBLIC OF ITALY - March 2011

ISIN	DESC	eur m	TRADES
US465410BG26	REP OF ITALY 03/33 TF 5.375% USD	14.80	965
XS0098449456	REP OF ITALY 99/29 TV EUR	4.14	315
XS0453097205	INST DE CRED OFICIAL 09/15 TV EUR	4.02	87
US465410BW75	REP OF ITALY 10/13 TF 2.125% USD	2.08	21
US465410BF43	REP OF ITALY 03/13 TF 4.375% USD	1.73	83

SUPRANATIONAL ENTITIES - March 2011

ISIN	DESC	eur m	TRADES
XS0249816579	B.E.I. 06/11 TF 3.625% EUR	15.89	287
XS0178483649	B.E.I. 03/13 TF 8% ZAR	14.22	224
XS0543366164	B.E.I. 10/15 TF 8% TRY	13.41	408
XS0356222173	B.E.I. 08/18 TF 9% ZAR	12.74	231
XS0425743506	B.E.I. 09/16 TF 3.5% EUR	10.73	135

BANKS - March 2011

ISIN	DESC	eur m	TRADES
IT0004698178	DEXIA CREDIOP 11/16 TF 4.85% EUR	119.27	5 228
IT0004645542	MEDIOBANCA 10/20 TF 5% SUB EUR	36.88	2 398
IT0004669138	MEDIOBANCA 10/15 TV EUR	33.93	1 348
IT0004291172	MEDIOBANCA 08/14 EUR	27.23	1 403
IT0004307986	DEXIA CREDIOP 08/12 EUR	26.02	1 715

CORPORATE - March 2011

ISIN	DESC	eur m	TRADES
IT0004576978	ENEL 10/16 TF 3.50% EUR	45.30	4 498
IT0004292691	ENEL 07/15 TV EUR	28.06	1 634
IT0004576994	ENEL 10/16 TV EUR	24.05	2 198
IT0004503766	ENI 09/15 TV EUR	19.80	1 543
IT0004503717	ENI 09/15 TF 4.00% EUR	13.51	1 240

TYPE OF STRUCTURE - MOST TRADED BONDS IN TERMS OF TURNOVER

PLAIN VANILLA - March 2011

ISIN	DESC	eur m	TRADES
IT0004698178	DEXIA CREDIOP 11/16 TF 4.85% EUR	119.27	5 228
IT0004576978	ENEL 10/16 TF 3.50% EUR	45.30	4 498
IT0004645542	MEDIOBANCA 10/20 TF 5% SUB EUR	36.88	2 398
IT0004292691	ENEL 07/15 TV EUR	28.06	1 634
IT0004576994	ENEL 10/16 TV EUR	24.05	2 198

STRUCTURED INTEREST RATE - March 2011

ISIN	DESC	eur m	TRADES
IT0004669138	MEDIOBANCA 10/15 TV EUR	33.93	1 348
IT0004307986	DEXIA CREDIOP 08/12 EUR	26.02	1 715
IT0004669120	MEDIOBANCA 10/15 TV USD	20.33	654
XS0223791517	B.E.I. 05/35 EUR	10.38	787
IT0006571829	B.E.I. 04/15 EUR	10.33	560

INFLATION LINKED - March 2011

ISIN	DESC	eur m	TRADES
IT0004357429	BANCA IMI 08/12 TV EUR	13.24	624
IT0004096415	MEDIOBANCA 06/12 TV EUR	11.48	529
IT0004332240	DEXIA CREDIOP 08/12 EUR	11.17	717
XS0258132272	B.E.I. 06/16 TV EUR	10.04	366
IT0004036338	MEDIOBANCA 06/11 TV EUR	9.73	194

INDEX LINKED - March 2011

ISIN	DESC	eur m	TRADES
IT0004291172	MEDIOBANCA 08/14 EUR	27.23	1 403
IT0004176787	DEXIA CREDIOP 07/12 TV EUR	8.68	401
IT0004375736	BANCA IMI 08/14 EUR	8.62	552
IT0003816243	BANCA NAZ LAVORO 05/11 EUR	8.35	581
IT0006636218	MORGAN STANLEY 07/13 EUR	7.90	666

EQUITY LINKED - March 2011

ISIN	DESC	eur m	TRADES
IT0004397292	BANCA IMI 08/14 EUR	4.71	385
IT0006664459	DEUTSCHE BANK AG 08/14 EUR	3.03	218
IT0001278941	CENTROBANCA 98/13 ITL	0.35	53
IT0006707811	BARCLAYS BANK 09/14 EUR	0.31	33
IT0006707803	BARCLAYS BANK 09/15 EUR	0.21	11

COMMODITY LINKED - March 2011

ISIN	DESC	eur m	TRADES
IT0003933154	MEDIOBANCA 05/11 EUR	1.84	114
IT0006607474	BERS 06/11 ONE COUPON EUR	0.55	26

News

In March 1 bond issued by The Royal Bank of Scotland Plc, 1 by Bank of America Corporation, 1 by Société Générale, 1 by Dexia Crediop S.p.A., 1 European Bank for Reconstruction and Development (EBRD) bond in EUR, 2 Kreditanstalt fuer Wiederaufbau (KfW) bond in EUR and USD, 2 European Investment Bank (EIB) bonds in EUR and USD, 4 Italian government bonds, 1 by Kingdom of Spain, 1 by German Federal Republic and 1 by French Republic were listed on MOT market.

Markets Analysis

Piazza Affari, 6 - 20123 Milano
 T +39 02 72426.478 | Fax +39 02 8646.4323
 e-mail: research@borsaitaliana.it
 www.borsaitaliana.it



Borsa Italiana
 London Stock Exchange Group