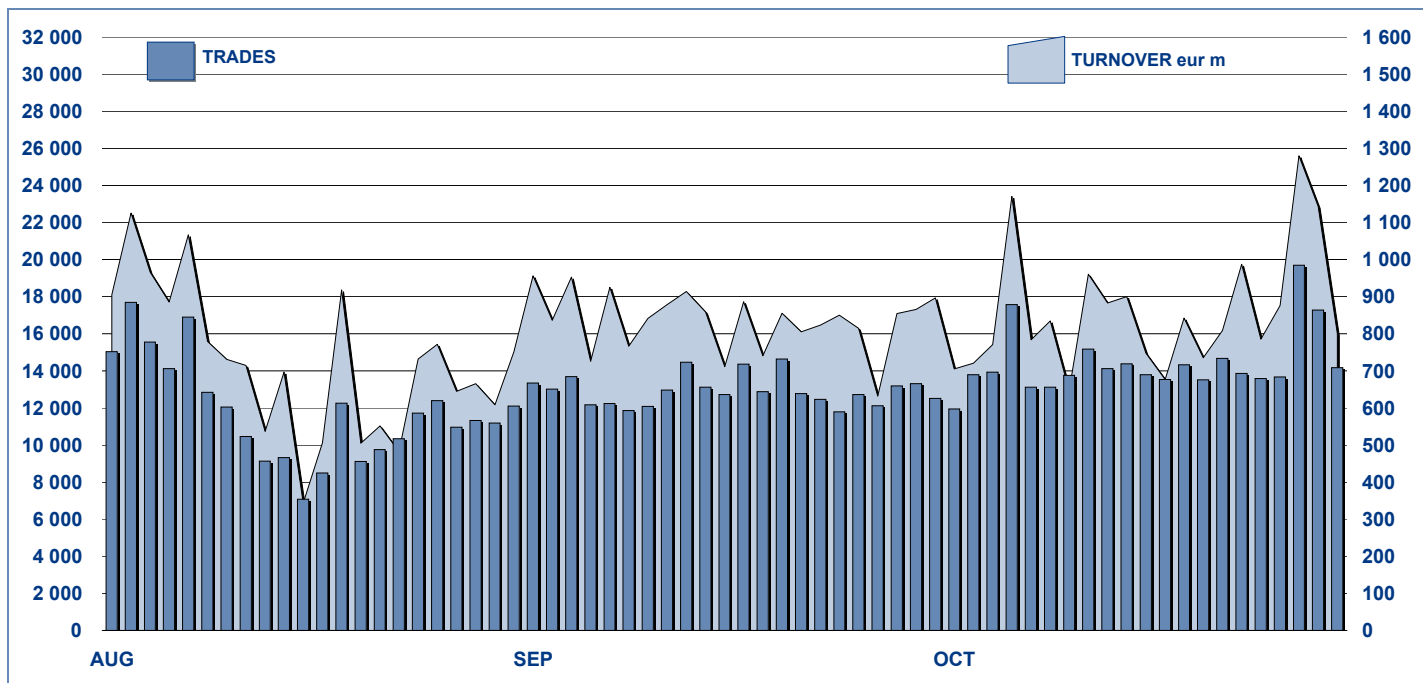


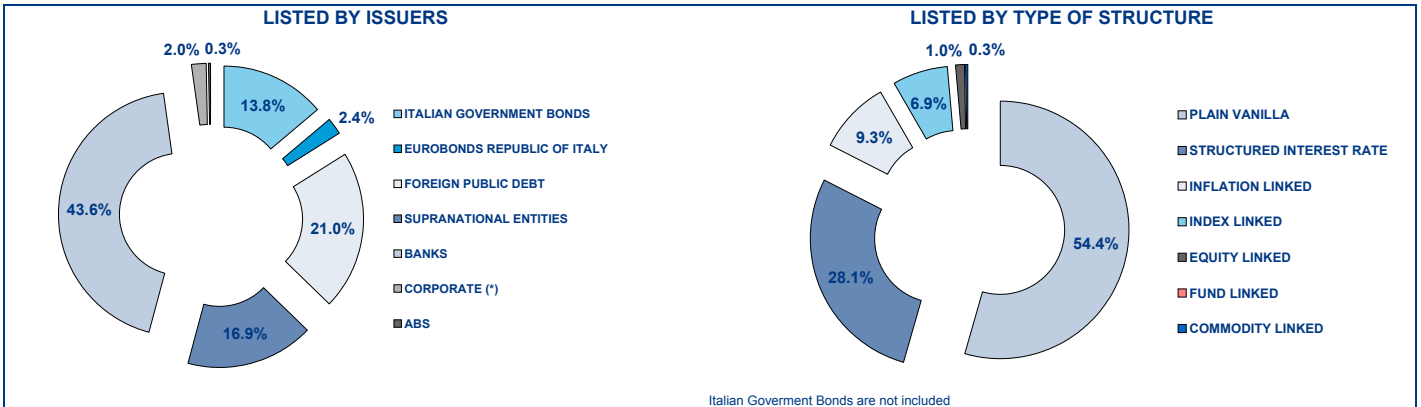
MOT DAILY TURNOVER



MAIN INDICATORS

	LISTED BOND					TRADING						
	DEC2009		SEPTEMBER 2010		OCTOBER 2010		SEPTEMBER 2010		OCTOBER 2010		JAN-OCT 2010	
	LISTED END of MONTH	LISTED END of MONTH	NEW LISTED BEGIN of JAN 2010	LISTED END of MONTH	NEW LISTED BEGIN of JAN 2010	TRADES number	TURNOVER eur m	TRADES number	TURNOVER eur m	TRADES number	TURNOVER eur m	
MARKET SEGMENTS												
ITALIAN GOVERNMENT BONDS	91	96	35	97	39	192 992	16 525.6	200 858	16 202.2	2 021 167	168 544.8	
BONDS	289	342	76	347	82	77 049	1 353.6	82 188	1 303.5	842 495	15 729.4	
EUROBONDS and ABSs	227	254	54	260	62	14 339	509.9	19 935	549.9	178 377	5 700.6	
TOTAL	607	692	165	704	183	284 380	18 389.0	302 981	18 055.6	3 042 039	189 974.8	
ISSUERS												
ITALIAN GOVERNMENT BONDS	91	96	35	97	39	192 992	16 525.6	200 858	16 202.2	2 021 167	168 544.8	
EUROBONDS REPUBLIC OF ITALY	14	15	1	17	3	2 590	68.7	3 245	79.5	26 418	694.1	
FOREIGN PUBLIC DEBT	135	149	32	148	32	9 037	305.7	13 856	340.7	117 046	3 264.6	
SUPRANATIONAL ENTITIES	107	114	16	119	22	8 603	219.7	8 855	203.8	105 658	2 668.4	
BANKS	243	302	79	307	85	61 888	1 142.7	63 735	1 063.9	649 881	12 913.9	
CORPORATE (*)	14	14	2	14	2	9 235	126.1	12 407	165.1	121 381	1 878.5	
ABS	3	2	-	2	-	35	0.5	25	0.4	488	10.3	
TOTAL	607	692	165	704	183	284 380	18 389.0	302 981	18 055.6	3 042 039	189 974.8	
(*) BOC and BOP are included												
TYPE OF STRUCTURE												
PLAIN VANILLA	295	320	66	329	77	38 265	877.6	48 577	961.1	473 597	11 092.0	
STRUCTURED INTEREST RATE	119	169	45	170	47	33 075	594.9	32 463	546.1	350 169	6 767.8	
INFLATION LINKED	49	56	12	56	12	9 217	229.8	9 544	170.4	96 726	2 067.7	
INDEX LINKED	46	42	4	42	4	9 674	144.2	10 414	157.9	90 859	1 354.3	
EQUITY LINKED	3	6	3	6	3	907	13.8	885	14.7	7 379	116.4	
FUND LINKED	-	-	-	-	-	-	-	-	-	-	-	
COMMODITY LINKED	2	2	-	2	-	250	3.2	240	3.1	1 902	25.9	
CURRENCY LINKED	2	1	-	2	1	-	-	-	-	240	6.0	
ITALIAN GOVERNMENT BONDS	91	96	35	97	39	192 992	16 525.6	200 858	16 202.2	2 021 167	168 544.8	
TOTAL	607	692	165	704	183	284 380	18 389.0	302 981	18 055.6	3 042 039	189 974.8	

FOCUS ON LISTED BONDS - END OF MONTH



ISSUERS - MOST TRADED BONDS IN TERMS OF TURNOVER

ITALIAN GOVERNMENT BONDS - October 2010				FOREIGN PUBLIC DEBT - October 2010			
ISIN	DESC	eur m	TRADES	ISIN	DESC	eur m	TRADES
IT0004634132	BTP 10/21 TF 3,75% EUR	2 594.33	22 444	DE0001135416	BUND 10/20 TF 2,25% EUR	59.92	1 009
IT0003934657	B.T.P. 05/37 TF 4,00% EUR	1 461.96	25 198	GR0133001140	GGB 99/19 TF 6,5% EUR	16.61	1 418
IT0004009673	B.T.P. 06/21 TF 3,75% EUR	964.23	12 058	DE0001135408	BUND 10/20 TF 3% EUR	16.56	272
IT0004620305	C.C.T. EU 15/06/2010 - 15/12/2015 TV EUR	950.75	10 747	GR0114022479	GGB 09/14 TF 5,50% EUR	14.72	894
IT0004594390	B.T.P. 1/3/2010 - 1/9/2020 TF 4% EUR	856.17	8 624	DE0001135390	BUND 09/20 TF 3,25% EUR	13.94	150

EUROBONDS REPUBLIC OF ITALY - October 2010				SUPRANATIONAL ENTITIES - October 2010			
ISIN	DESC	eur m	TRADES	ISIN	DESC	eur m	TRADES
US465410BG26	REP OF ITALY 03/33 TF 5,375% USD	46.66	2 139	XS0249816579	B.E.I. 06/11 TF 3,625% EUR	20.50	401
US465410BW75	REP OF ITALY 10/13 TF 2,125% USD	7.48	99	IT0006506007	B.E.I. 96/16 ZERO COUPON EUR	11.74	752
XS0098449456	REP OF ITALY 99/29 TV EUR	6.61	276	XS0495347287	B.E.I. 10/15 TF 2,5% EUR	11.18	206
US465410BF43	REP OF ITALY 03/13 TF 4,375% USD	5.54	219	XS0290050524	B.E.I. 07/24 TF 4,125% EUR	8.89	226
XS0453097205	INST DE CRED OFICIAL 09/15 TV EUR	3.42	60	IT0006571829	B.E.I. 04/15 MULTI COUPON EUR	7.42	349

BANKS - October 2010				CORPORATE - October 2010			
ISIN	DESC	eur m	TRADES	ISIN	DESC	eur m	TRADES
NL0009483833	RBS 10/20 MULTI COUPON EUR	31.67	1 219	IT0004576978	ENEL 10/16 TF 3,50% EUR	33.16	2 961
NL0009487453	RBS 10/25 MULTI COUPON EUR	27.66	1 485	IT0004292691	ENEL 07/15 TV EUR	28.29	1 800
NL0009483825	RBS 10/20 TF 5,00% EUR	26.03	1 358	IT0004576994	ENEL 10/16 TV EUR	24.83	2 504
NL0009537851	RBS 10/16 STEP COUPON EUR	24.63	1 122	IT0004503766	ENI 09/15 TV EUR	21.96	1 739
IT0004608797	MEDIOBANCA 10/20 TF 4,50% EUR	21.91	1 137	XS0129648621	FIAT 01/11 TF 6,75% EUR	13.57	617

TYPE OF STRUCTURE - MOST TRADED BONDS IN TERMS OF TURNOVER

PLAIN VANILLA - October 2010				STRUCTURED INTEREST RATE - October 2010			
ISIN	DESC	eur m	TRADES	ISIN	DESC	eur m	TRADES
DE0001135416	BUND 10/20 TF 2,25% EUR	59.92	1 009	NL0009483833	RBS 10/20 MULTI COUPON EUR	31.67	1 219
US465410BG26	REP OF ITALY 03/33 TF 5,375% USD	46.66	2 139	NL0009487453	RBS 10/25 MULTI COUPON EUR	27.66	1 485
IT0004576978	ENEL 10/16 TF 3,50% EUR	33.16	2 961	NL0009537851	RBS 10/16 STEP COUPON EUR	24.63	1 122
IT0004292691	ENEL 07/15 TV EUR	28.29	1 800	NL0009062215	RBS 09/19 MULTI COUPON EUR	18.56	1 182
NL0009483825	RBS 10/20 TF 5,00% EUR	26.03	1 358	NL0009294057	RBS 10/20 MULTI COUPON EUR	18.25	742

INFLATION LINKED - October 2010				INDEX LINKED - October 2010			
ISIN	DESC	eur m	TRADES	ISIN	DESC	eur m	TRADES
IT0006601469	RBS 06/11 TV EUR	18.56	1 076	IT0004291172	MEDIOBANCA 08/14 MULTI COUPON EUR	17.72	1 010
NL0009289339	RBS 10/20 MULTI COUPON EUR	14.67	652	IT0004375736	BANCA IMI 08/14 MULTI COUPON EUR	17.04	866
FR0000198799	OAT-1 02/32 TV EUR	9.62	30	IT0006664137	DB AG 08/14 MULTI COUPON EUR	12.72	680
FR0000186413	OAT-1 99/29 TV EUR	7.78	14	IT0004315047	BANCO POPOLARE 08/14 MULTI COUPON EUR	8.38	473
IT0003594873	BANCA INTESA 04/14 TV EUR	7.16	577	IT0006640236	MORGAN STANLEY 07/13 MULTI COUPON EUR	7.81	497

EQUITY LINKED - October 2010				COMMODITY LINKED - October 2010			
ISIN	DESC	eur m	TRADES	ISIN	DESC	eur m	TRADES
IT0004397292	BANCA IMI 08/14 MULTI COUPON EUR	8.28	477	IT0003933154	MEDIOBANCA 05/11 ONE COUPON EUR	2.60	188
IT0006664459	DB AG 08/14 MULTI COUPON EUR	4.20	283	IT0006607474	BERS 06/11 ONE COUPON EUR	0.49	52
IT0001278941	CENTROBANCA 98/13 MULTI COUPON ITL	1.54	80				
IT0006707811	BARCLAYS BANK 09/14 MULTI COUPON EUR	0.33	15				
IT0006707803	BARCLAYS BANK 09/15 MULTI COUPON EUR	0.33	23				

News

In October 1 bond issued by Credit Suisse AG, 3 by Dexia Crediop S.p.A., 1 by The Royal Bank of Scotland N.V., 1 by UBS AG, 2 by Republic of Italy in USD and 6 by EIB in TRY and ZAR were listed on MOT market.

Markets Analysis
 Piazza Affari, 6 - 20123 Milano
 T +39 02 72426.478 | Fax +39 02 8646.4323
 e-mail: research@borsaitaliana.it
www.borsaitaliana.it

 **Borsa Italiana**
 London Stock Exchange Group