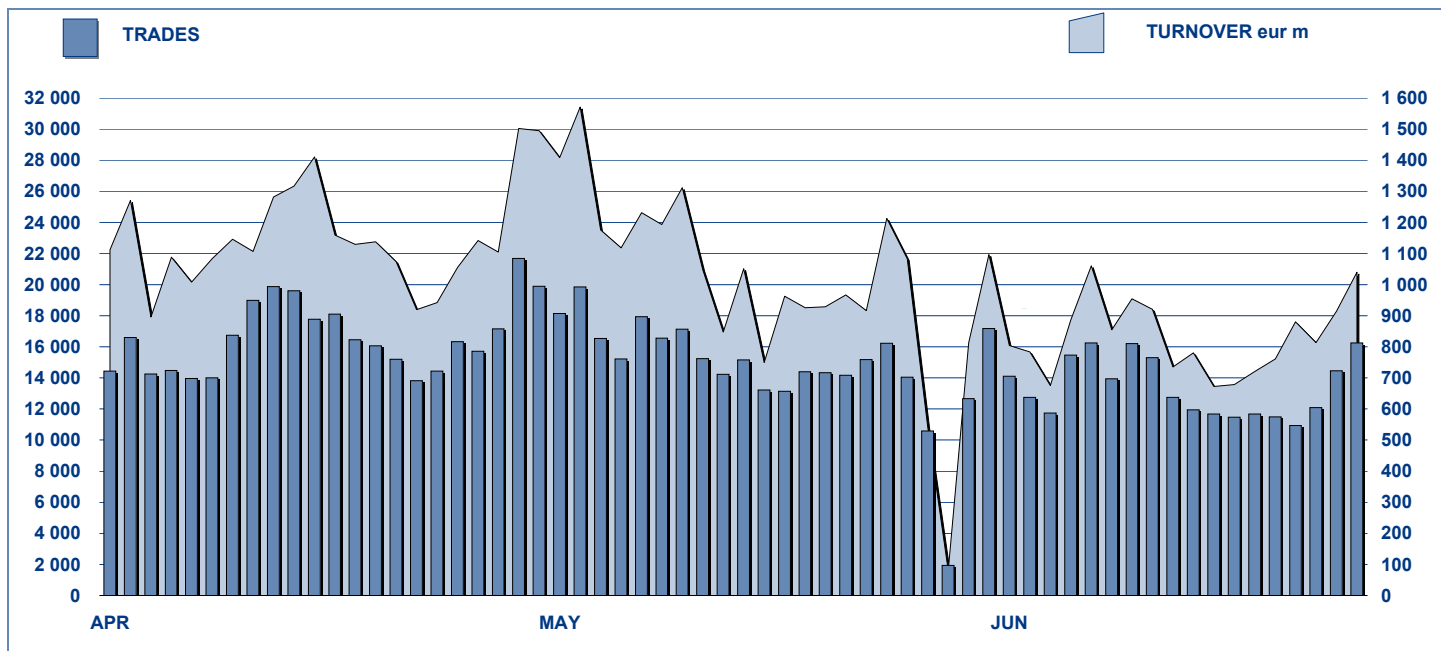


MOT DAILY TURNOVER



MAIN INDICATORS

LISTED BOND

TRADING

DEC 2008	MAY 2009		JUNE 2009		MAY 2009		JUNE 2009		JAN-JUN 2009	
LISTED	LISTED	NEW LISTED	LISTED	NEW LISTED	TRADES	TURNOVER	TRADES	TURNOVER	TRADES	TURNOVER
END OF MONTH	END OF MONTH	GIN of JAN 20	END OF MONTH	GIN of JAN 2007	number	eur m	number	eur m	number	eur m

MARKET SEGMENTS

ITALIAN GOVERNMENT BONDS	93	95	22	94	28	254 389	21 302.2	220 812	16 143.9	1 600 719	117 668.0
BONDS	276	275	10	277	17	50 748	822.5	50 192	811.5	266 316	3 822.2
EUROBONDS and ABSs	195	217	35	219	40	17 155	573.9	11 805	513.2	101 176	3 543.3
TOTAL	564	587	67	590	85	322 292	22 698.5	282 809	17 468.5	1 968 211	125 033.5

ISSUERS

ITALIAN GOVERNMENT BONDS	93	95	22	94	28	254 389	21 302.2	220 812	16 143.9	1 600 719	117 668.0
EUROBONDS REPUBLIC OF ITALY	14	13	-	13	-	1 793	49.4	1 380	32.1	10 153	279.6
FOREIGN PUBLIC DEBT	106	131	29	130	31	3 493	158.2	3 132	198.1	18 872	972.2
SUPRANATIONAL ENTITIES	107	106	6	106	9	18 824	436.8	12 692	330.5	95 153	2 271.8
BANKS	226	224	10	227	15	36 072	617.9	33 996	559.1	182 818	2 773.6
CORPORATE (*)	13	13	-	15	2	7 625	131.5	10 713	202.9	59 986	1 055.8
ABS	5	5	-	5	-	96	2.4	84	1.9	510	12.5
TOTAL	564	587	67	590	85	322 292	22 698.5	282 809	17 468.5	1 968 211	125 033.5

(*) BOC and BOP are included

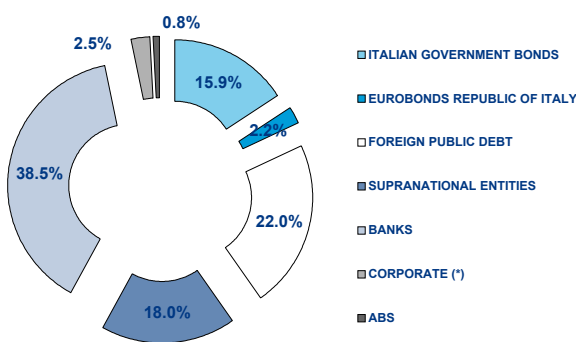
TYPE OF STRUCTURE

PLAIN VANILLA	236	266	42	275	54	31 744	829.5	29 641	836.2	171 842	4 503.2
STRUCTURED INTEREST RATE	125	122	1	119	1	20 474	322.1	16 073	237.3	100 609	1 413.1
INFLATION LINKED	54	51	-	50	-	7 958	138.7	7 429	123.6	48 475	824.0
INDEX LINKED	50	47	1	46	1	7 303	99.8	8 425	120.6	44 103	590.3
EQUITY LINKED	3	3	1	3	1	255	3.4	273	4.3	1 587	19.1
FUND LINKED	-	-	-	-	-	-	-	-	-	-	-
COMMODITY LINKED	2	2	-	2	-	154	2.4	134	1.8	705	8.5
CURRENCY LINKED	1	1	-	1	-	15	0.5	22	0.9	171	7.3

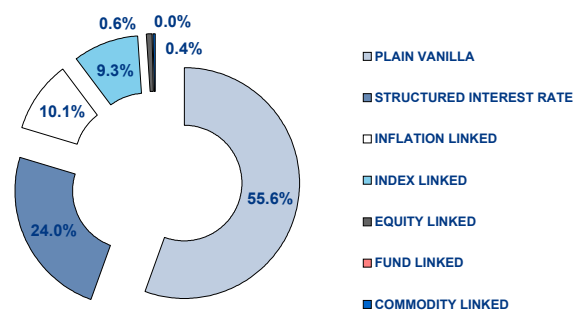
ITALIAN GOVERNMENT BONDS	93	95	22	94	28	254 389	21 302.2	220 812	16 143.9	1 600 719	117 668.0
TOTAL	564	587	67	590	85	322 292	22 698.5	282 809	17 468.5	1 968 211	125 033.5

FOCUS ON LISTED BONDS - END OF MONTH

LISTED BY ISSUERS



LISTED BY TYPE OF STRUCTURE



Italian Government Bonds are not included

ISSUERS - MOST TRADED BONDS IN TERMS OF TURNOVER

ITALIAN GOVERNMENT BONDS - June 2009

ISIN	DESC	eur m	TRADES
IT0004489610	B.T.P. 09/19 TF 4,25% EUR	1 466.44	19 289
IT0004404965	C.C.T. 08/15 TV EUR	710.78	7 137
IT0004505076	B.T.P. 09/14 TF 3,5% EUR	594.18	7 835
IT0004448863	B.T.P. 08/13 TF 3,75% EUR	583.52	6 711
IT0004356843	B.T.P. 08/23 TF 4,75% EUR	537.78	9 361

FOREIGN PUBLIC DEBT - June 2009

ISIN	DESC	eur m	TRADES
DE0001137230	SCHATZ 08/10 TF 4% EUR	57.98	43
IT0006592080	REPUBBLICA AUSTRIACA 05/22 MULTI COUPO	10.32	553
GR0338001531	GGB-EI 02/25 TV EUR	8.03	48
FR0000186413	OAT-I 99/29 TV EUR	8.00	15
DE0001141471	BOBL 05/10 TF 2.5% EUR	5.85	54

EUROBONDS REPUBLIC OF ITALY - June 2009

ISIN	DESC	eur m	TRADES
US465410BG26	REP OF ITALY 03/33 TF 5,375% USD	8.20	545
XS0098449456	REP OF ITALY 99/29 TV EUR	3.80	233
US465410BN76	REP OF ITALY 05/15 TF 4,50% USD	3.58	220
US465410BQ08	REP OF ITALY 06/16 TF 4,75% USD	3.23	52
US465410BS63	REP OF ITALY 07/17 TF 5,375% USD	1.48	29

SUPRANATIONAL ENTITIES - June 2009

ISIN	DESC	eur m	TRADES
XS0327177134	B.E.I. 07/13 TF 4,375% EUR	31.60	213
XS0408966199	B.E.I. 09/14 TF 3,125% EUR	30.16	784
IT0006591942	BIRS 05/20 MULTI COUPON EUR	26.44	457
XS0223791517	B.E.I. 05/35 MULTI COUPON EUR	19.62	1 290
XS0425743506	B.E.I. 09/16 TF 3,5% EUR	18.78	481

BANKS - June 2009

ISIN	DESC	eur m	TRADES
NL0009054899	ABN AMRO BANK 09/14 TV EUR	85.89	2 525
NL0009054907	ABN AMRO BANK 09/19 TF 5,5% EUR	44.48	2 062
IT0003816243	BNL 05/11 MULTI COUPON EUR	43.72	2 215
IT0000958592	MEDIOBANCA 96/11 ZERO COUPON ITL	17.72	1 134
XS0185030698	UNICREDITO ITALIANO 04/14 TF 4,375% EUF	12.37	156

CORPORATE - June 2009

ISIN	DESC	eur m	TRADES
IT0004503766	ENI 09/15 TV EUR	37.50	1 729
IT0004292691	ENEL 07/15 TV EUR	37.42	1 911
IT0004503717	ENI 09/15 TF 4,00% EUR	28.36	1 891
XS0129648621	FIAT 01/11 TF 6,75% EUR	27.68	1 367
XS0107525403	FIAT 00/10 TF 6,25% EUR	15.72	862

TYPE OF STRUCTURE - MOST TRADED BONDS IN TERMS OF TURNOVER

PLAIN VANILLA - June 2009

ISIN	DESC	eur m	TRADES
NL0009054899	ABN AMRO BANK 09/14 TV EUR	85.89	2 525
DE0001137230	SCHATZ 08/10 TF 4% EUR	57.98	43
NL0009054907	ABN AMRO BANK 09/19 TF 5,5% EUR	44.48	2 062
IT0004503766	ENI 09/15 TV EUR	37.50	1 729
IT0004292691	ENEL 07/15 TV EUR	37.42	1 911

STRUCTURED INTEREST RATE - June 2009

ISIN	DESC	eur m	TRADES
IT0006591942	BIRS 05/20 MULTI COUPON EUR	26.44	457
XS0223791517	B.E.I. 05/35 MULTI COUPON EUR	19.62	1 290
IT0006571829	B.E.I. 04/15 MULTI COUPON EUR	12.27	757
XS0224943091	B.E.I. 05/20 MULTI COUPON EUR	11.27	578
IT0006592080	REPUBBLICA AUSTRIACA 05/22 MULTI COUPO	10.32	553

INFLATION LINKED - June 2009

ISIN	DESC	eur m	TRADES
IT0003672976	BANCA INTESA 04/09 TV EUR	10.23	540
IT0003793483	DEXIA CREDIOP 05/10 TV EUR	8.41	757
GR0338001531	GGB-EI 02/25 TV EUR	8.03	48
FR0000186413	OAT-I 99/29 TV EUR	8.00	15
IT0003748313	UNICREDIT EX CAPITALIA 04/14 TV SUB EU	6.61	462

INDEX LINKED - June 2009

ISIN	DESC	eur m	TRADES
IT0003816243	BANCA NAZ LAVORO 05/11 MULTI COUPON EU	43.72	2 215
IT0003035299	UNICREDITO ITALIANO 00/10 MULTI COUPON E	9.15	671
IT0003806434	DEXIA CREDIOP 05/10 TV EUR	7.61	485
XS0208904796	GOLDMAN SACHS GROUP 05/10 MULTI COUPC	5.86	445
IT0003844336	MEDIOBANCA 05/10 ONE COUPON EUR	5.54	360

EQUITY LINKED - June 2009

ISIN	DESC	eur m	TRADES
IT0004397292	BANCA IMI 08/14 MULTI COUPON EUR	3.62	213
IT0003739841	BANCA INTESA 04/09 TV EUR	0.41	30
IT0001278941	CENTROBANCA 98/13 MULTI COUPON ITL	0.23	30

COMMODITY LINKED - June 2009

ISIN	DESC	eur m	TRADES
IT0006607474	BERS 06/11 ONE COUPON EUR	1.15	74
IT0003933154	MEDIOBANCA 05/11 ONE COUPON EUR	0.62	60

News

Research & Development
 Piazza Affari, 6 - 20123 Milano
 T +39 02 72426.478 | Fax +39 02 8646.4323
 e-mail: research@borsaitaliana.it
 www.borsaitaliana.it



The publication of this document does not represent solicitation, by Borsa Italiana S.p.A., of public saving and is not to be considered as a recommendation by Borsa Italiana as to the suitability of the investment, if any, herein described. This document has not to be considered complete and it is meant for information and discussion purposes only. Borsa Italiana accepts no liability, arising, without limitation to the generality of the foregoing, from inaccuracies and/or mistakes, for decisions and/or actions taken by any party based on this documents. Trademarks Borsa Italiana and Borsa Italiana's logo, IDEM, MOT, MTA, STAR, SeDeX, MIB, IDEX, Bit Club, Academy, MiniFB, DDM, EuroMOT, Market Connect, NIS, Borsa Virtuale, ExtraMOT, MIV are owned by Borsa Italiana S.p.A. FTSE is a registered trademark of London Stock Exchange plc and The Financial Times Limited and is used by FTSE International Limited under licence. London Stock Exchange, the coat of arms device and AIM are a registered trade mark of London Stock Exchange plc. The above trademarks and any other trademark owned by the London Stock Exchange Group cannot be used without express written consent by the Company having the ownership of the same. Borsa Italiana S.p.A., and its subsidiaries are subject to direction and coordination of London Stock Exchange Group Holdings (Italy) Ltd - Italian branch. © June 2009 Borsa Italiana S.p.A. All rights reserved.