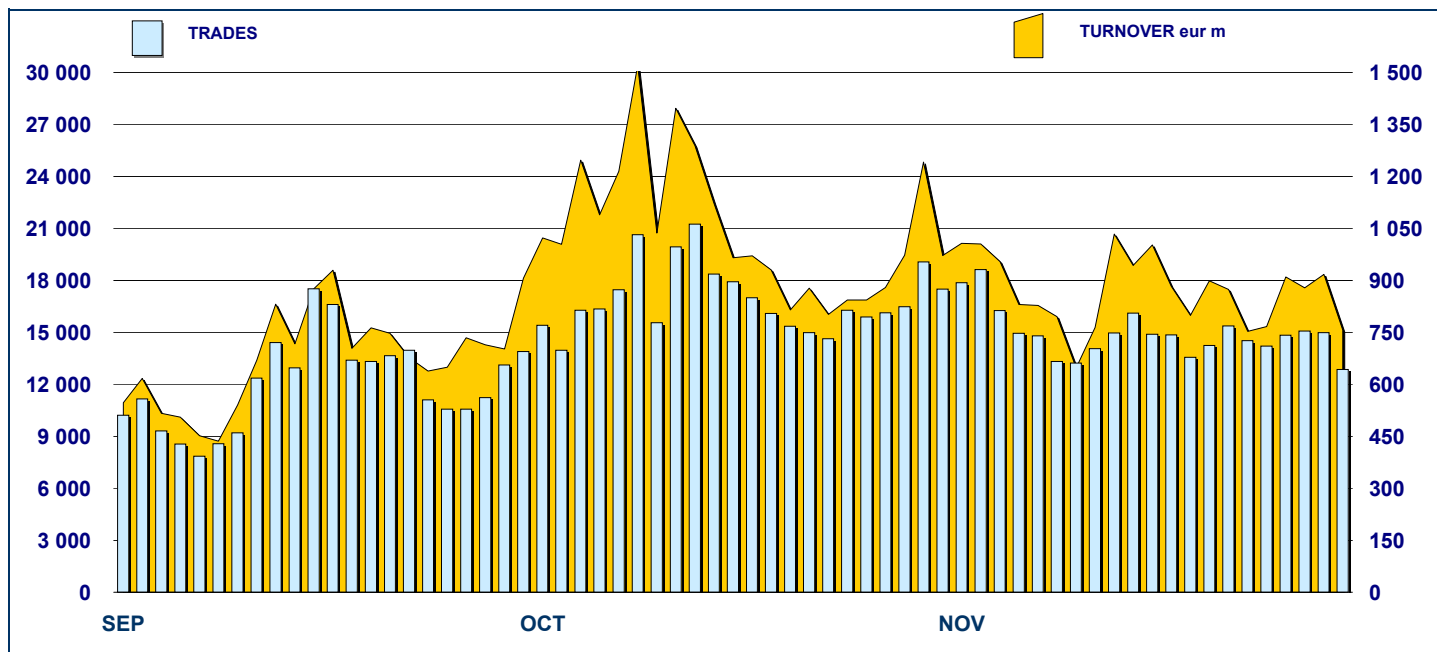


MOT DAILY TURNOVER



MAIN INDICATORS

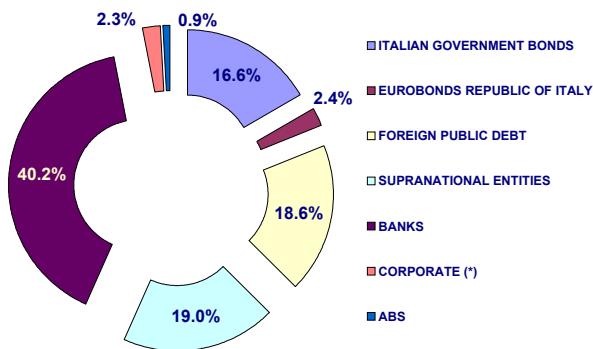
LISTED BOND

TRADING

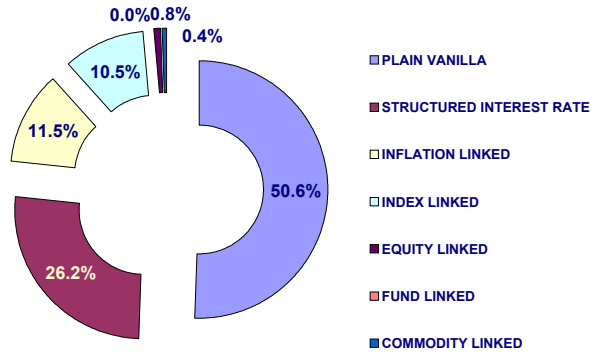
	DEC 2007		OCTOBER 2008		NOVEMBER 2008		OCTOBER 2008		NOVEMBER 2008		JAN-NOV 2008	
	LISTED	END of MONTH	LISTED	NEW LISTED	LISTED	NEW LISTED	TRADES	TURNOVER	TRADES	TURNOVER	TRADES	TURNOVER
			EGIN of JAN 20	EGIN of JAN 2007			number	eur m	number	eur m	number	eur m
MARKET SEGMENTS												
ITALIAN GOVERNMENT BONDS	92	96	43	95	46	297 353	22 206.0	238 917	16 226.5	2 234 097	151 289.5	
BONDS	288	287	35	281	35	52 664	637.6	37 252	460.3	410 085	5 378.6	
EUROBONDS and ABSs	155	186	54	198	67	40 336	1 215.8	19 553	551.1	141 852	4 706.2	
TOTAL	535	569	132	574	148	390 353	24 059.5	295 722	17 237.9	2 786 034	161 374.3	
ISSUERS												
ITALIAN GOVERNMENT BONDS	92	96	43	95	46	297 353	22 206.0	238 917	16 226.5	2 234 097	151 289.5	
EUROBONDS REPUBLIC OF ITALY	17	14	1	14	1	4 282	116.1	2 551	60.2	20 403	579.1	
FOREIGN PUBLIC DEBT	92	96	14	107	25	3 347	162.5	2 629	90.7	18 304	817.4	
SUPRANATIONAL ENTITIES	81	107	33	109	35	30 626	889.9	15 273	395.1	108 076	2 726.1	
BANKS	233	238	41	231	41	39 274	501.0	25 318	318.5	317 691	4 495.5	
CORPORATE (*)	13	13	-	13	-	15 312	180.0	10 979	145.9	85 742	1 327.1	
ABS	7	5	-	5	-	159	3.8	55	1.0	1 721	139.5	
TOTAL	535	569	132	574	148	390 353	24 059.5	295 722	17 237.9	2 786 034	161 374.3	
(*) BOC and BOP are included												
TYPE OF STRUCTURE												
PLAIN VANILLA	212	232	56	242	69	54 436	1 347.2	28 785	642.1	248 417	5 813.3	
STRUCTURED INTEREST RATE	116	126	16	125	16	13 579	148.3	12 185	141.0	100 028	1 287.7	
INFLATION LINKED	51	55	8	55	8	12 266	176.5	8 564	130.2	109 500	1 787.7	
INDEX LINKED	47	51	8	50	8	10 862	148.7	6 581	87.1	69 760	878.6	
EQUITY LINKED	14	6	-	4	-	1 671	29.0	558	8.2	19 599	261.4	
FUND LINKED	1	-	-	-	-	-	-	-	-	1 035	12.6	
COMMODITY LINKED	2	2	-	2	-	136	1.7	65	0.7	3 473	38.9	
CURRENCY LINKED	-	1	1	1	1	50	2.0	67	2.2	125	4.5	
ITALIAN GOVERNMENT BONDS	92	96	43	95	46	297 353	22 206.0	238 917	16 226.5	2 234 097	151 289.5	
TOTAL	535	569	132	574	148	390 353	24 059.5	295 722	17 237.9	2 786 034	161 374.3	

FOCUS ON LISTED BONDS - END OF MONTH

LISTED BY ISSUERS



LISTED BY TYPE OF STRUCTURE



Italian Government Bonds are not included

ISSUERS - MOST TRADED BONDS IN TERMS OF TURNOVER

ITALIAN GOVERNMENT BONDS - NOVEMBER 2008					FOREIGN PUBLIC DEBT - NOVEMBER 2008				
ISIN	DESC	eur m	TRADES		ISIN	DESC	eur m	TRADES	
IT0003934657	B.T.P. 05/37 TF 4.00% EUR	711.21	18 778		FR0000188013	OAT-I 01/12 TV EUR	5.00	40	
IT0004423957	B.T.P. 08/19 TF 4.50% EUR	625.55	9 038		DE0001141471	BOBL 05/10 TF 2.5% EUR	5.00	95	
IT0004361041	B.T.P. 08/18 TF 4.50% EUR	518.66	8 046		XS0170724479	REP AUSTRIACA 03/13 TF 3,25% USD	4.73	258	
IT0004365554	B.T.P. 08/13 TF 4.25% EUR	434.22	4 844		FR0000571424	OAT-I 98/09 TV EUR	4.42	74	
IT0003993158	C.C.T. 05/12 TV EUR	382.33	3 982		FR0010135525	OAT-I 04/15 TV EUR	4.03	30	
EUROBONDS REPUBLIC OF ITALY - NOVEMBER 2008					SUPRANATIONAL ENTITIES - NOVEMBER 2008				
ISIN	DESC	eur m	TRADES		ISIN	DESC	eur m	TRADES	
US465410BK38	REP OF ITALY 04/09 TF 3,25 USD	15.66	538		XS0249816579	B.E.I. 06/11 TF 3,625% EUR	84.28	2 696	
US465410BF43	REP OF ITALY 03/13 TF 4,375% USD	10.93	583		XS0272359489	B.E.I. 06/16 TF 3,875% EUR	40.07	925	
US465410BN76	REP OF ITALY 05/15 TF 4,50% USD	10.86	410		XS0276299541	B.E.I. 06/10 TF 3,750% EUR	37.03	952	
US465410BG26	REP OF ITALY 03/33 TF 5,375% USD	9.11	483		XS0093014610	B.E.I. 99/09 TF 4% EUR	18.43	642	
XS0098449456	REP OF ITALY 99/29 TV EUR	4.79	213		XS0119282423	B.E.I. 00/10 TF 5,625% EUR	14.25	145	
BANKS - NOVEMBER 2008					CORPORATE - NOVEMBER 2008				
ISIN	DESC	eur m	TRADES		ISIN	DESC	eur m	TRADES	
IT0006649005	ABN AMRO BANK 07/12 MULTI COUPC	29.76	1 575		XS0129648621	FIAT 01/11 TF 6,75% EUR	35.23	2 739	
IT0000958592	MEDIOBANCA 96/11 ZC ITL	25.61	1 438		IT0004292691	ENEL 07/15 TV EUR	32.56	2 015	
IT0003594832	BANCA INTESA 04/09 TV EUR	20.23	1 225		XS0137544465	FIAT 01/11 STEP COUPON EUR	24.33	2 330	
IT0003617674	BANCA INTESA 04/09 TV EUR	14.02	927		XS0107525403	FIAT 00/10 TF 6,25% EUR	19.91	1 405	
IT0003550339	BANCA INTESA 03/08 TV EUR	9.35	655		IT0004292683	ENEL 07/15 TF 5,25% EUR	12.64	939	

TYPE OF STRUCTURE - MOST TRADED BONDS IN TERMS OF TURNOVER

PLAIN VANILLA - NOVEMBER 2008					STRUCTURED INTEREST RATE - NOVEMBER 2008				
ISIN	DESC	eur m	TRADES		ISIN	DESC	eur m	TRADES	
XS0249816579	B.E.I. 06/11 TF 3,625% EUR	84.28	2696		XS0137544465	FIAT 01/11 STEP COUPON EUR	24.33	2330	
XS0272359489	B.E.I. 06/16 TF 3,875% EUR	40.07	925		IT0006571829	B.E.I. 04/15 MULTI COUPON EUR	7.39	484	
XS0276299541	B.E.I. 06/10 TF 3,750% EUR	37.03	952		XS0098449456	REP OF ITALY 99/29 TV EUR	4.79	213	
XS0129648621	FIAT 01/11 TF 6,75% EUR	35.23	2739		IT0003022701	UNICREDITO ITALIANO 00/10 STEP CC	4.64	564	
IT0004292691	ENEL 07/15 TV EUR	32.56	2015		IT0006570664	B.E.I. 04/09 TV EUR	4.22	130	
INFLATION LINKED - NOVEMBER 2008					INDEX LINKED - NOVEMBER 2008				
ISIN	DESC	eur m	TRADES		ISIN	DESC	eur m	TRADES	
IT0003594832	BANCA INTESA 04/09 TV EUR	20.23	1225		IT0003647176	BANCA INTESA 04/09 ONE COUPON E	0.38	33	
IT0003617674	BANCA INTESA 04/09 TV EUR	14.02	927		IT0006630344	GOLDMAN SACHS GROUP 07/13 MUL'	1.33	123	
IT0003550339	BANCA INTESA 03/08 TV EUR	9.35	655		IT0003740047	BANCA NAZIONALE DEL LAVORO 04/1	0.09	22	
IT0003672976	BANCA INTESA 04/09 TV EUR	6.49	593		XS0276162327	LEHMAN BROTHERS TREASURY CO.	-	0	
FR0000188013	OAT-I 01/12 TV EUR	5.00	40		IT0004291172	MEDIOBANCA 08/14 MULTI COUPON E	1.28	100	
EQUITY LINKED - NOVEMBER 2008					FUND LINKED - NOVEMBER 2008				
ISIN	DESC	eur m	TRADES		ISIN	DESC	eur m	TRADES	
IT0006563974	BAYERISCHE HYPO-UND VEREINSBA	4.05	288		IT0006607474	BERS 06/11 ONE COUPON EUR	0.42	28	
IT0006670761	BARCLAYS BANK 08/12 MULTI COUPC	2.21	67		IT0003933154	MEDIOBANCA 05/11 ONE COUPON EU	0.27	37	
IT0006565979	BAYERISCHE HYPO-UND VEREINSBA	2.21	166						
IT0003536825	BANCA INTESA 03/08 MULTI COUPON	1.54	54						
IT0001278941	CENTROBANCA 98/13 MULTI COUPOI	0.20	38						

News

DomesticMOT: Base Prospectus: 3 Banca IMI issue programs

EuroMOT: 2 Eib plain vanilla bonds in USD, 11 German Federal Republic Bonds



Research & Development
 Piazza degli Affari, 6 - 20123 - Milano
 Tel +39 02 72426.478 - Fax +39 02 8646.4323
 e-mail: research@borsaitaliana.it
www.borsaitaliana.it

The publication of this document does not represent solicitation, by Borsa Italiana S.p.A., of public saving and is not to be considered as a recommendation by Borsa Italiana as to the suitability of the investment, if any, herein described. This document has not to be considered complete and it is meant for information and discussion purposes only. Borsa Italiana accepts no liability, arising, without limitation to the generality of the foregoing, from inaccuracies and/or mistakes, for decisions and/or actions taken by any party based on this documents. Trademarks Borsa Italiana and Borsa Italiana's logo, Expandi, IDEM, MOT, MTA, MTF, STAR, SeDEX, All STARS, MIB, MIB 30, MIBTEL, MIDEK, IDEX, ITEX, Bli Club, Academy, MiniFIB, DDM, EuroMOT, Market Connect, NIS are owned by Borsa Italiana S.p.A. Trademark S&P is owned by The McGraw-Hill Companies Inc. The above trademarks and any other trademark owned by the London Stock Exchange Group cannot be used without express written consent by the Company having the ownership of the same. Borsa Italiana S.p.A. is subject to direction and coordination of London Stock Exchange Group Plc. Borsa Italiana's subsidiaries are subject to its direction and coordination. © November 2008 Borsa Italiana S.p.A. All rights reserved.