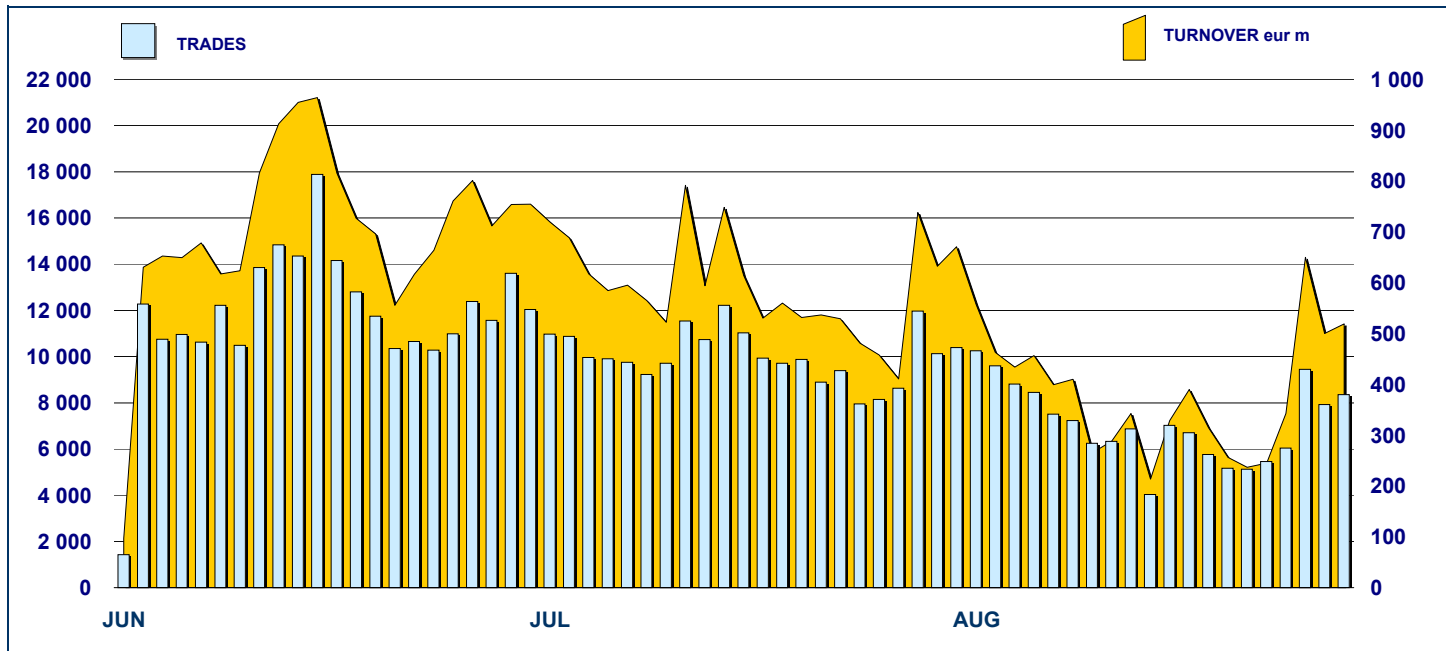


MOT DAILY TURNOVER



MAIN INDICATORS

LISTED BOND

TRADING

	DEC 07		JULY 2008		AUGUST 2008		JULY 2008		AUGUST 2008		JAN-AUG 2008	
	LISTED	END of MONTH	LISTED	NEW LISTED	LISTED	NEW LISTED	TRADES	TURNOVER	TRADES	TURNOVER	TRADES	TURNOVER
			GIN of JAN 20	GIN of JAN 2007			number	eur m	number	eur m	number	eur m
MARKET SEGMENTS												
ITALIAN GOVERNMENT BONDS	92	94	29	95	34	189 883	13 161.2	116 357	7 224.8	1 489 448	98 911.6	
BONDS	288	282	19	285	27	33 222	413.0	21 160	256.3	276 173	3 722.3	
EUROBONDS and ABSs	155	182	44	181	44	9 903	296.6	4 816	131.4	70 839	2 572.2	
TOTAL	535	558	92	561	105	233 008	13 870.8	142 333	7 612.6	1 836 460	105 206.2	

ISSUERS

ITALIAN GOVERNMENT BONDS	92	94	29	95	34	189 883	13 161.2	116 357	7 224.8	1 489 448	98 911.6
EUROBONDS REPUBLIC OF ITALY	17	13	-	13	-	1 274	35.0	626	16.6	11 980	355.2
FOREIGN PUBLIC DEBT	92	99	14	99	14	1 532	60.3	760	23.7	10 880	507.1
SUPRANATIONAL ENTITIES	81	101	24	100	24	6 681	148.0	3 992	80.7	53 561	1 229.5
BANKS	233	233	25	236	33	26 274	344.9	17 342	220.6	215 594	3 154.2
CORPORATE (*)	13	13	-	13	-	7 199	111.7	3 140	41.7	53 639	924.5
ABS	7	5	-	5	-	165	9.9	116	4.3	1 358	124.0
TOTAL	535	558	92	561	105	233 008	13 870.8	142 333	7 612.6	1 836 460	105 206.2

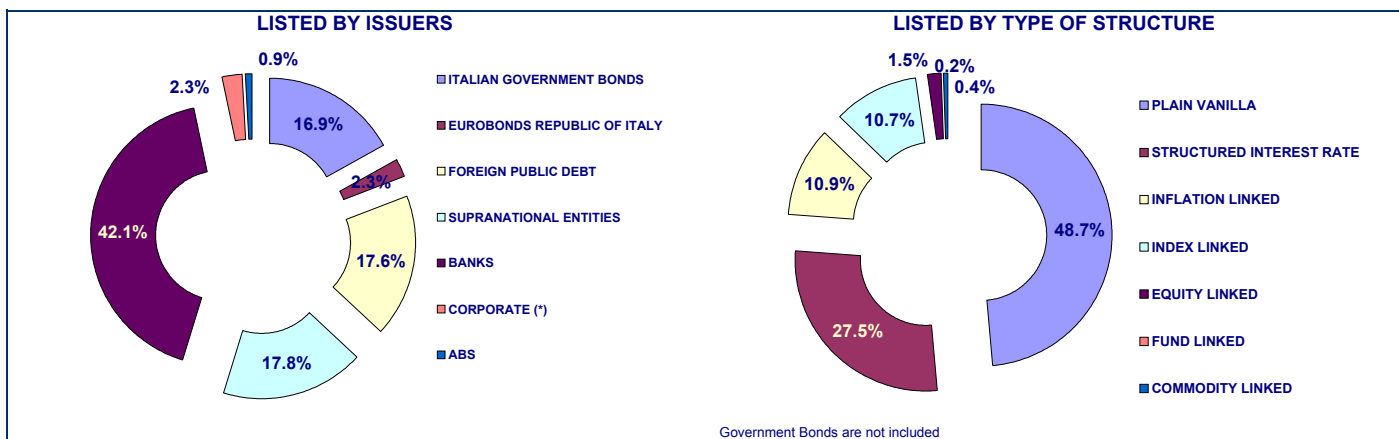
(*) BOC and BOP are included

TYPE OF STRUCTURE

PLAIN VANILLA	212	232	45	227	45	17 851	372.2	9 778	183.8	146 145	3 383.6
STRUCTURED INTEREST RATE	116	122	9	128	16	7 528	98.3	4 827	57.2	65 042	894.2
INFLATION LINKED	51	50	2	51	3	9 629	148.3	6 408	91.4	72 498	1 241.9
INDEX LINKED	47	50	7	50	7	6 010	65.2	3 900	42.4	43 690	534.5
EQUITY LINKED	14	7	-	7	-	1 507	19.4	825	10.7	15 609	194.2
FUND LINKED	1	1	-	1	-	112	1.3	40	0.6	1 029	12.5
COMMODITY LINKED	2	2	-	2	-	488	4.9	198	1.7	2 999	33.5

ITALIAN GOVERNMENT BONDS	92	94	29	95	34	189 883	13 161.2	116 357	7 224.8	1 489 448	98 911.6
TOTAL	535	558	92	561	105	233 008	13 870.8	142 333	7 612.6	1 836 460	105 206.2

FOCUS ON LISTED BONDS - END OF MONTH



ISSUERS - MOST TRADED BONDS IN TERMS OF TURNOVER

ITALIAN GOVERNMENT BONDS - AUGUST 2008				FOREIGN PUBLIC DEBT - AUGUST 2008			
ISIN	DESC	TURNOV eur m	TRADES	ISIN	DESC	TURNOV eur m	TRADES
IT0004166812	C.T.Z. 2/1/2007 - 31/12/2008 ZC EUR	293.7	1 722	FR0010094375	OAT-1 03/11 TV EUR	4.0	13
IT0004224041	C.C.T. 07/14 TV EUR	228.6	1 630	XS0170724479	REP AUSTRIACA 03/13 TF 3,25% USC	1.8	58
IT0003858856	C.C.T. 05/12 TV EUR	220.9	2 361	DE0001141430	BOBL 03/08 TF 3,50% EUR	1.6	28
IT0003934657	B.T.P. 05/37 TF 4.00% EUR	216.8	6 111	ES0000012239	OBL ES 99/10 TF 4% EUR	1.1	7
IT0004101447	C.C.T. 06/13 TV EUR	215.3	2 793	DE0001030500	DBR-EI 06/16 TV EUR	0.9	21

EUROBONDS REPUBLIC OF ITALY - AUGUST 2008				SUPRANATIONAL ENTITIES - AUGUST 2008			
ISIN	DESC	TURNOV eur m	TRADES	ISIN	DESC	TURNOV eur m	TRADES
US465410BN76	REP OF ITALY 05/15 TF 4,50% USD	3.6	78	XS0249816579	B.E.I. 06/11 TF 3,625% EUR	8.3	285
US465410BK38	REP OF ITALY 04/09 TF 3,25 USD	3.3	145	XS0276299541	B.E.I. 06/10 TF 3,750% EUR	6.4	207
US465410BG26	REP OF ITALY 03/33 TF 5,375% USD	3.0	183	IT0006506007	B.E.I. 96/16 ZC EUR	5.4	454
US465410BF43	REP OF ITALY 03/13 TF 4,375% USD	2.3	90	XS0093014610	B.E.I. 99/09 TF 4% EUR	4.2	202
XS0125141316	REP OF ITALY 01/11 TF 6% USD	2.1	36	XS0327177134	B.E.I. 07/13 TF 4,375% EUR	3.7	169

BANKS - AUGUST 2008				CORPORATE - AUGUST 2008			
ISIN	DESC	TURNOV eur m	TRADES	ISIN	DESC	TURNOV eur m	TRADES
IT0003594832	BANCA INTESA 04/09 TV EUR	10.0	779	XS0129648621	FIAT 01/11 TF 6,75% EUR	11.9	826
IT0003672976	BANCA INTESA 04/09 TV EUR	8.7	485	IT0004292691	ENEL 07/15 TV EUR	9.2	696
XS0189530990	UNICREDITO ITALIANO 04/11 TV EUR	8.5	148	XS0107525403	FIAT 00/10 TF 6,25% EUR	5.1	361
IT0003617674	BANCA INTESA 04/09 TV EUR	7.8	441	IT0004292683	ENEL 07/15 TF 5,25% EUR	4.7	384
IT0000958592	MEDIOBANCA 96/11 ZC ITL	7.3	681	XS0137544465	FIAT 01/11 STEP COUPON EUR	4.4	436

TYPE OF STRUCTURE - MOST TRADED BONDS IN TERMS OF TURNOVER

PLAIN VANILLA - AUGUST 2008				STRUCTURED INTEREST RATE - AUGUST 2008			
ISIN	DESC	TURNOV eur m	TRADES	ISIN	DESC	TURNOV eur m	TRADES
XS0129648621	FIAT 01/11 TF 6,75% EUR	11.9	826	IT0001277406	CREDIOP 98/18 REVERSE ITL	5.0	115
IT0004292691	ENEL 07/15 TV EUR	9.2	696	XS0137544465	FIAT 01/11 STEP COUPON EUR	4.4	436
XS0189530990	UNICREDITO ITALIANO 04/11 TV EUR	8.5	148	IT0006585449	BEI 05/15 MULTI COUPON EUR	3.1	110
XS0249816579	B.E.I. 06/11 TF 3,625% EUR	8.3	285	IT0006571829	B.E.I. 04/15 MULTI COUPON EUR	2.8	183
IT0000958592	MEDIOBANCA 96/11 ZC ITL	7.3	681	IT0003815955	DEXIA CREDIOP 05/10 TV EUR	2.5	197

INFLATION LINKED - AUGUST 2008				INDEX LINKED - AUGUST 2008			
ISIN	DESC	TURNOV eur m	TRADES	ISIN	DESC	TURNOV eur m	TRADES
IT0003594832	BANCA INTESA 04/09 TV EUR	10.0	779	IT0003816243	BNL 05/11 MULTI COUPON EUR	6.4	398
IT0003672976	BANCA INTESA 04/09 TV EUR	8.7	485	IT0006566043	DRESDNER BANK 04/09 ONE COUPON	3.5	295
IT0003617674	BANCA INTESA 04/09 TV EUR	7.8	441	IT0003724066	UNICREDIT EX CAPITALIA 04/09 MULT	2.6	305
IT0003806244	DEXIA CREDIOP 05/10 TV EUR	6.5	371	IT0006590076	MERRILL LYNCH 05/11 MULTI COUPO	2.3	178
IT0003539985	BANCA INTESA 03/08 TV EUR	5.5	462	IT0003684880	BNL 04/09 MULTI COUPON EUR	2.2	296

EQUITY LINKED - AUGUST 2008				FUND LINKED - AUGUST 2008			
ISIN	DESC	TURNOV eur m	TRADES	ISIN	DESC	TURNOV eur m	TRADES
IT0003536825	BANCA INTESA 03/08 MULTI COUPON	6.4	351	IT0003492375	CREDEM 03/08 ONE COUPON EUR	0.6	40
IT0006563974	BAYERISCHE HYPO-UND VEREINSBA	1.4	153				
IT0006565979	BAYERISCHE HYPO-UND VEREINSBA	1.1	136				
IT0006561879	BAYERISCHE HYPO-UND VEREINSBA	1.1	104				
IT0006558503	BAYERISCHE HYPO-UND VEREINSBA	0.5	57				

Italian Government Bonds are not included in the analysis for type of structure

News

DOMESTIC MOT: MORGAN STANLEY 5 structured bonds linked to CMS rate, DEXIA CREDIOP 3 structured bonds;
 Base Prospectus GOLDMAN SACHS GROUP "Obbligazioni con opzioni digitali con condizioni basket performance, multiple performance, spread performance e/o con rimborso anticipato automatico"



Research & Development
 Piazza degli Affari, 6 - 20123 - Milano
 Tel +39 02 72426.478 - Fax +39 02 8646.4323
 e-mail: research@borsaitaliana.it
www.borsaitaliana.it

The diffusion of this document does not represent solicitation, by Borsa Italiana S.p.A., of public saving and is not to be considered as suggestion by Borsa Italiana S.p.A. to the suitability of the investment, if any, herein described. This document has not to be considered complete and it is meant for information and personal purposes only. Borsa Italiana S.p.A. accepts no liability, rising, without limitation to the generality of foregoing from inaccuracies and/or mistakes, for decisions and/or actions taken by any part based on this document.
 Trademarks Borsa Italiana, All STARS, EuroMOT, Expandi, IDEM, MTA, MOT, MTF, STAR, SeDeX, MIB, MIB30, MIBTEL, MIDEX, IDEX, ITX, Bli Club, Academy, MiniFIB, Market Connect, DDM, NIS, and Borsa Italiana's logo are owned by Borsa Italiana S.p.A. Trademarks MTS, MTS Società per il Mercato dei Titoli di Stato, Bond Vision, EuroMTS and Telematico Exchange Place are owned by MTS S.p.A. Trademark S&P is owned by The McGraw-Hill Companies Inc. The above trademarks and any other trademark owned by the Borsa Italiana Group cannot be used without previous written approval by the Company having the ownership of the same.
 Pursuant to article 1497-bis of the Italian Civil Code, Borsa Italiana S.p.A. is subject to direction and coordination functions by LSEG Plc.