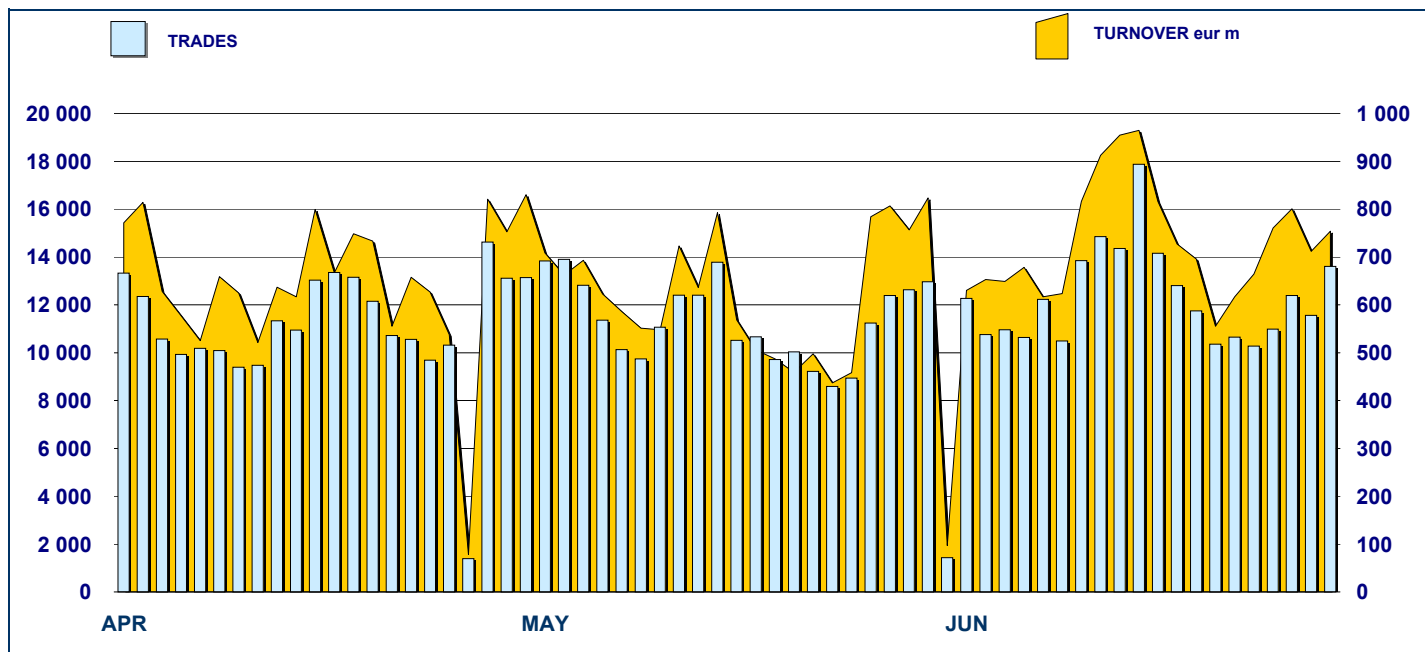


MOT DAILY TURNOVER



MAIN INDICATORS

LISTED BOND

TRADING

DEC 2007	MAY 2008		JUNE 2008		MAY 2008		JUNE 2008		JAN - JUN 2008	
LISTED	LISTED	NEW LISTED	LISTED	NEW LISTED	TRADES	TURNOVER	TRADES	TURNOVER	TRADES	TURNOVER
END of MONTH	END of MONTH	EGIN of JAN 20	END of MONTH	EGIN of JAN 2007	number	eur m	number	eur m	number	eur m

MARKET SEGMENTS

ITALIAN GOVERNMENT BONDS	92	97	23	95	26	193 168	12 285.6	205 433	13 950.7	1 183 208	78 525.6
BONDS	288	287	17	285	17	36 233	495.8	32 605	406.7	221 791	3 053.0
EUROBONDS and ABSs	155	178	33	185	44	8 903	327.6	10 169	337.7	56 120	2 144.1
TOTAL	535	562	73	565	87	238 304	13 109.0	248 207	14 695.1	1 461 119	83 722.7

ISSUERS

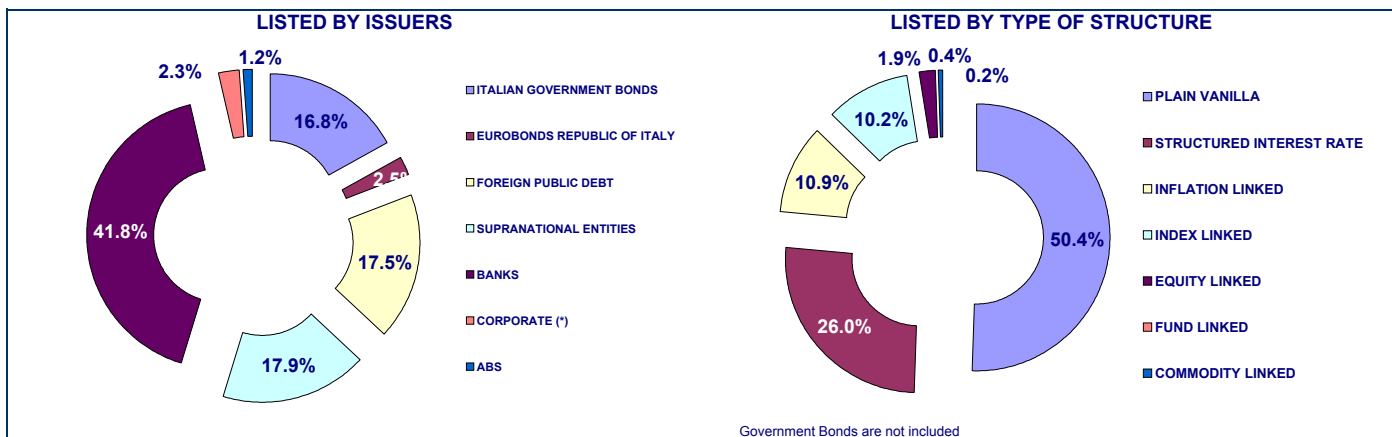
ITALIAN GOVERNMENT BONDS	92	97	23	95	26	193 168	12 285.6	205 433	13 950.7	1 183 208	78 525.6
EUROBONDS REPUBLIC OF ITALY	17	15	-	14	-	1 720	49.5	1 741	45.4	10 080	303.5
FOREIGN PUBLIC DEBT	92	96	9	99	14	1 375	67.6	1 110	76.8	8 588	423.1
SUPRANATIONAL ENTITIES	81	102	24	101	24	6 900	161.0	7 611	178.4	42 888	1 000.8
BANKS	233	232	17	236	23	29 329	440.1	26 897	354.2	171 978	2 588.7
CORPORATE (*)	13	13	-	13	-	5 654	89.3	5 265	83.7	43 300	771.1
ABS	7	7	-	7	-	158	15.8	150	5.9	1 077	109.9
TOTAL	535	562	73	565	87	238 304	13 109.0	248 207	14 695.1	1 461 119	83 722.7

(*) BOC and BOP are included

TYPE OF STRUCTURE

PLAIN VANILLA	212	230	34	237	45	18 500	408.8	18 397	396.3	118 516	2 827.6
STRUCTURED INTEREST RATE	116	123	9	122	9	8 243	114.9	6 953	80.8	52 687	738.6
INFLATION LINKED	51	51	2	51	2	10 030	199.0	9 308	176.2	56 461	1 002.2
INDEX LINKED	47	49	5	48	5	5 763	71.5	5 654	62.6	33 780	426.9
EQUITY LINKED	14	9	-	9	-	1 985	21.4	1 905	21.4	13 277	164.1
FUND LINKED	1	1	-	1	-	170	2.5	89	1.1	877	10.7
COMMODITY LINKED	2	2	-	2	-	445	5.3	468	6.0	2 313	26.9
ITALIAN GOVERNMENT BONDS	92	97	23	95	26	193 168	12 285.6	205 433	13 950.7	1 183 208	78 525.6
TOTAL	535	562	73	565	87	238 304	13 109.0	248 207	14 695.1	1 461 119	83 722.7

FOCUS ON LISTED BONDS - END OF MONTH



ISSUERS - MOST TRADED BONDS IN TERMS OF TURNOVER

ITALIAN GOVERNMENT BONDS - JUNE 2008				FOREIGN PUBLIC DEBT - JUNE 2008			
ISIN	DESC	TURNOV eur m	TRADES	ISIN	DESC	TURNOV eur m	TRADES
IT0004254352	B.T.P. 07/10 TF 4,50% EUR	549.88	11 577	FR0000188799	OAT-I 02/32 TV EUR	13.84	27
IT0004381866	B.O.T. 16/06/2008 - 15/06/2009 ZC EUR	492.41	9 449	DE0001030500	DBR-EI 06/16 TV EUR	13.26	62
IT0003872923	B.T.P. 05/10 TF 2,75% EUR	363.83	4 879	FR0010094375	OAT-I 03/11 TV EUR	9.49	26
IT0003934657	B.T.P. 05/37 TF 4,00% EUR	363.42	9 055	FR0000186413	OAT-I 99/29 TV EUR	3.54	12
IT0004166812	C.T.Z. 21/2007 - 31/12/2008 ZC EUR	355.23	3 265	FR0010050559	OAT-I 03/20 TV EUR	3.18	25

EUROBONDS REPUBLIC OF ITALY - JUNE 2008				SUPRANATIONAL ENTITIES - JUNE 2008			
ISIN	DESC	TURNOV eur m	TRADES	ISIN	DESC	TURNOV eur m	TRADES
US465410BK38	REP OF ITALY 04/09 TF 3,25 USD	9.67	372	US298785EJ14	B.E.I. 08/11 TF 3,25% USD	14.81	687
US465410BF43	REP OF ITALY 03/13 TF 4,375% USD	9.48	446	US298785CX26	B.E.I. 03/13 TF 3,375% USD	14.15	577
US465410BN76	REP OF ITALY 05/15 TF 4,50% USD	9.22	324	XS0249816579	B.E.I. 06/11 TF 3,625% EUR	11.96	403
US465410BH09	REP OF ITALY 03/08 TF 2,5% USD	5.81	46	XS0204937394	B.E.I. 04/11 TF 3,875% USD	10.39	351
US465410BG26	REP OF ITALY 03/33 TF 5,375% USD	5.09	325	XS0276299541	B.E.I. 06/10 TF 3,750% EUR	10.11	374

BANKS - JUNE 2008				CORPORATE - JUNE 2008			
ISIN	DESC	TURNOV eur m	TRADES	ISIN	DESC	TURNOV eur m	TRADES
IT0003490528	BANCA INTESA 03/08 TV EUR	25.89	959	IT0004292691	ENEL 07/15 TV EUR	24.36	1 344
XS0189530990	UNICREDITO ITALIANO 04/11 TV EUR	21.06	324	XS0129648621	FIAT 01/11 TF 6,75% EUR	18.70	984
IT0003672976	BANCA INTESA 04/09 TV EUR	12.87	954	XS0107525403	FIAT 00/10 TF 6,25% EUR	9.20	502
IT0003539985	BANCA INTESA 03/08 TV EUR	11.25	863	XS0137544465	FIAT 01/11 STEP COUPON EUR	8.78	758
IT0000958592	MEDIOBANCA 96/11 ZC ITL	11.22	942	IT0004292683	ENEL 07/15 TF 5,25% EUR	7.85	743

TYPE OF STRUCTURE - MOST TRADED BONDS IN TERMS OF TURNOVER

PLAIN VANILLA - JUNE 2008				STRUCTURED INTEREST RATE - JUNE 2008			
ISIN	DESC	TURNOV eur m	TRADES	ISIN	DESC	TURNOV eur m	TRADES
IT0004292691	ENEL 07/15 TV EUR	24.36	1 344	XS0137544465	FIAT 01/11 STEP COUPON EUR	8.78	758
XS0189530990	UNICREDITO ITALIANO 04/11 TV EUR	21.06	324	IT0006571829	B.E.I. 04/15 MULTI COUPON EUR	6.08	300
XS0129648621	FIAT 01/11 TF 6,75% EUR	18.70	984	IT0003022701	UNICREDITO ITALIANO 00/10 STEP CC	4.32	405
US298785EJ14	B.E.I. 08/11 TF 3,25% USD	14.81	687	XS0187245021	BANCA EUROPEA INVESTIMENTI (BEI)	3.56	164
US298785CX26	B.E.I. 03/13 TF 3,375% USD	14.15	577	IT0003694442	UNICREDIT EX CAPITALIA 04/14 MULT	3.40	342

INFLATION LINKED - JUNE 2008				INDEX LINKED - JUNE 2008			
ISIN	DESC	TURNOV eur m	TRADES	ISIN	DESC	TURNOV eur m	TRADES
IT0003490528	BANCA INTESA 03/08 TV EUR	25.89	959	IT0006566043	DRESDNER BANK 04/09 ONE COUPON	6.56	484
FR0000188799	OAT-I 02/32 TV EUR	13.84	27	IT0003816243	BANCA NAZ LAVORO 05/11 MULTI CO	6.31	511
DE0001030500	DBR-EI 06/16 TV EUR	13.26	62	IT0006636218	MORGAN STANLEY 07/13 ONE COUPON	3.81	341
IT0003672976	BANCA INTESA 04/09 TV EUR	12.87	954	XS0208904796	GOLDMAN SACHS GROUP 05/10 MUL	3.67	267
IT0003539985	BANCA INTESA 03/08 TV EUR	11.25	863	IT0003035299	UNICREDITO ITALIANO 00/10 MULTI C	3.20	382

EQUITY LINKED - JUNE 2008				FUND LINKED - JUNE 2008			
ISIN	DESC	TURNOV eur m	TRADES	ISIN	DESC	TURNOV eur m	TRADES
IT0003536825	BANCA INTESA 03/08 MULTI COUPON	10.87	814	IT0003492375	CREDEM 03/08 ONE COUPON EUR	1.07	89
IT0003489140	BANCA INTESA 03/08 MULTI COUPON	2.54	222				
IT0006561879	BAYERISCHE HYPO-UND VEREINSBA	2.32	157				
IT0006565979	BAYERISCHE HYPO-UND VEREINSBA	2.05	228				
IT0006563974	BAYERISCHE HYPO-UND VEREINSBA	1.71	230				

News



Research & Development
 Piazza degli Affari, 6 - 20123 - Milano
 Tel +39 02 72426.478 - Fax +39 02 8646.4323
 e-mail: research@borsaitaliana.it
www.borsaitaliana.it

The diffusion of this document does not represent solicitation, by Borsa Italiana S.p.A., of public saving and is not to be considered as suggestion by Borsa Italiana S.p.A. to the suitability of the investment, if any, herein described. This document has not to be considered complete and it is meant for information and personal purposes only. Borsa Italiana S.p.A. accepts no liability, rising, without limitation to the generality of foregoing from inaccuracies and/or mistakes, for decisions and/or actions taken by any part based on this document.
 Trademarks Borsa Italiana, MTA, MTF, IDEM, STAR, TechSTAR, SeDEX, TAH, MOT, EuroMOT, Expandi, S&P/MIB, MIB30, MIBTEL, MIBEX, All Stars, MEX, ITEX, Bit Club, Academy, Borsam@I, MiniFIB and the logo of the Borsa Italiana Group are registered by Borsa Italiana S.p.A. Trademark BIT Systems is registered by BIT Systems S.p.A. Trademarks Cassa di Compensazione e Garanzia and CC&G are registered by Cassa di Compensazione e Garanzia S.p.A. Trademarks Monte Titoli and X-TRM are registered by Monte Titoli S.p.A. Trademarks Piazza Affari Gestione e Servizi and Palazzo Mezzanotte Congress and Training Centre are registered by Piazza Affari Gestione e Servizi S.p.A. Trademark S&P is registered by The McGraw-Hill Companies, Inc. The above mentioned trademarks as well as the other trademarks registered by the Borsa Italiana Group can not be used without previous written consent by the company owner of the trademark.
 Pursuant to article 1497-bis of the Italian Civil Code, Borsa Italiana S.p.A. is subject to direction and coordination functions by LSEG Plc.