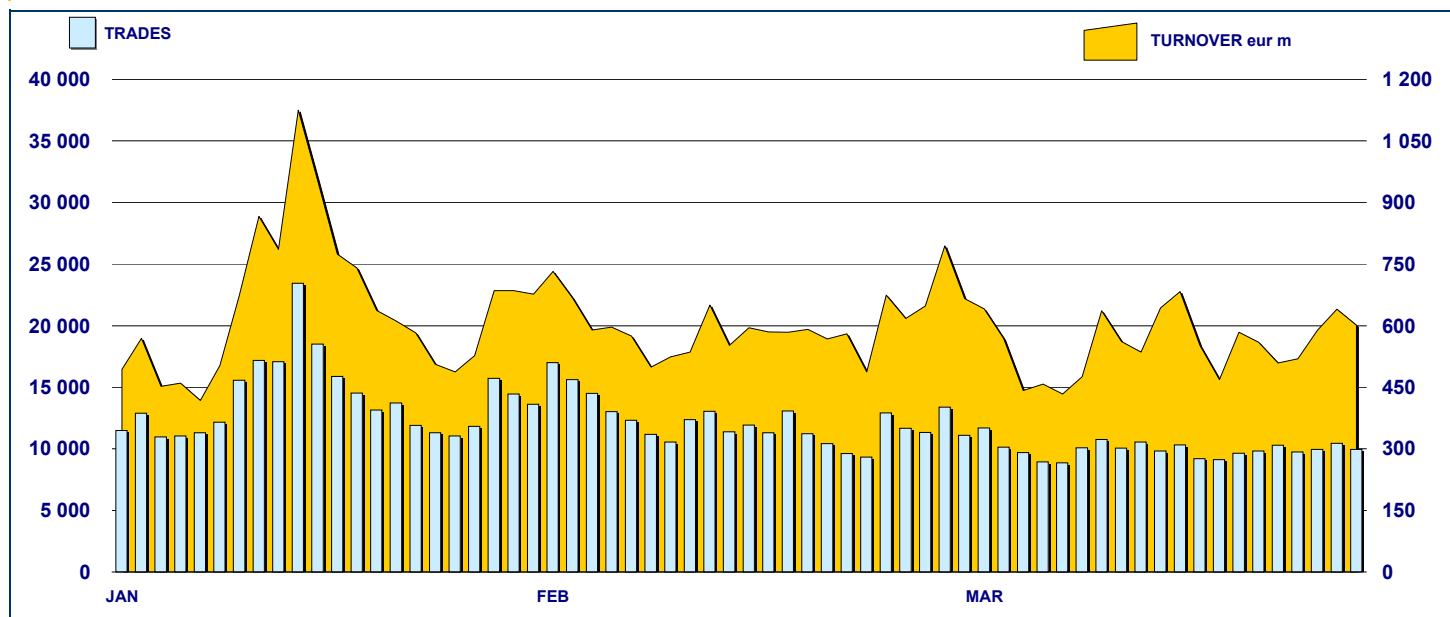


## MOT DAILY TURNOVER



## MAIN INDICATORS

### LISTED BOND

### TRADING

	DEC 2006			FEBRUARY 2007		MARCH 2007		FEBRUARY 2007		MARCH 2007		JAN-MAR 2007	
	LISTED END of MONTH	LISTED END of MONTH	NEW LISTED 3EGIN of JAN 2007	LISTED END of MONTH	NEW LISTED 3EGIN of JAN 2007	LISTED END of MONTH	NEW LISTED 3EGIN of JAN 2007	TRADES number	TURNOVER eur m	TRADES number	TURNOVER eur m	TRADES number	TURNOVER eur m
<b>MARKET SEGMENTS</b>													
ITALIAN GOVERNMENT BONDS	91	90	7	93	12	194 329	11 036.5	173 940	11 750.2	620 381	36 074.4		
BONDS	303	301	5	301	9	40 745	544.5	40 601	529.5	127 128	1 656.3		
EUROBONDS and ABSs	135	138	4	143	10	8 716	269.4	9 008	282.1	28 617	895.7		
<b>TOTAL</b>	<b>529</b>	<b>529</b>	<b>16</b>	<b>537</b>	<b>31</b>	<b>243 790</b>	<b>11 850.3</b>	<b>223 549</b>	<b>12 561.8</b>	<b>776 126</b>	<b>38 626.4</b>		
<b>ISSUERS</b>													
ITALIAN GOVERNMENT BONDS	91	90	7	93	12	194 329	11 036.5	173 940	11 750.2	620 381	36 074.4		
EUROBONDS REPUBLIC OF ITALY	18	18	-	18	-	2 213	66.4	2 484	78.6	7 663	231.7		
FOREIGN PUBLIC DEBT	83	86	4	85	4	1 625	37.5	1 494	39.5	4 891	130.4		
SUPRANATIONAL ENTITIES	71	70	-	75	5	8 148	169.2	7 794	149.9	25 051	513.8		
BANKS	247	246	5	247	10	33 733	471.2	34 202	475.5	106 689	1 471.8		
CORPORATE (*)	11	11	-	11	-	3 562	63.7	3 461	63.7	10 899	185.9		
ABS	8	8	-	8	-	180	5.9	174	4.3	552	18.3		
<b>TOTAL</b>	<b>529</b>	<b>529</b>	<b>16</b>	<b>537</b>	<b>31</b>	<b>243 790</b>	<b>11 850.3</b>	<b>223 549</b>	<b>12 561.8</b>	<b>776 126</b>	<b>38 626.4</b>		

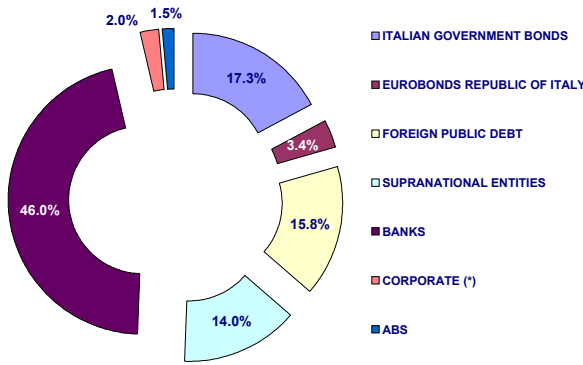
(\*) BOC and BOP are included

### TYPE OF STRUCTURE

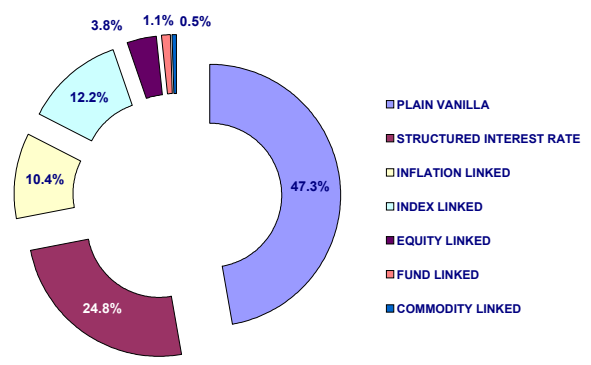
PLAIN VANILLA	209	206	4	210	10	15 737	364.5	15 476	353.0	50 748	1 163.1		
STRUCTURED INTEREST RATE	110	110	-	110	-	11 152	163.4	10 254	152.1	33 048	471.0		
INFLATION LINKED	42	44	2	46	4	5 945	92.3	6 167	94.9	17 744	274.7		
INDEX LINKED	52	54	3	54	5	8 299	100.5	9 707	129.0	28 499	361.4		
EQUITY LINKED	18	18	-	17	-	7 609	84.6	7 216	73.1	23 513	255.5		
FUND LINKED	5	5	-	5	-	552	7.1	666	8.7	1 795	22.9		
COMMODITY LINKED	2	2	-	2	-	167	1.4	123	0.8	398	3.3		
ITALIAN GOVERNMENT BONDS	91	90	7	93	12	194 329	11 036.5	173 940	11 750.2	620 381	36 074.4		
<b>TOTAL</b>	<b>529</b>	<b>529</b>	<b>16</b>	<b>537</b>	<b>31</b>	<b>243 790</b>	<b>11 850.3</b>	<b>223 549</b>	<b>12 561.8</b>	<b>776 126</b>	<b>38 626.4</b>		

**FOCUS ON LISTED BONDS - END OF MONTH**

**LISTED BY ISSUERS**



**LISTED BY TYPE OF STRUCTURE**



Italian Government Bonds are not included

**ISSUERS - MOST TRADED BONDS IN TERMS OF TURNOVER**

**ITALIAN GOVERNMENT BONDS - MARCH 2007**

ISIN	DESC	TURNOV eur m	TRADES
IT0003934657	B.T.P. 05/37 TF 4.00% EUR	499.83	9 560
IT0003858856	C.C.T. 05/12 TV EUR	489.24	4 359
IT0004200587	B.O.T. 15/3/2007 - 14/3/2008 ZC EUR	389.43	5 748
IT0004101447	C.C.T. 06/13 TV EUR	367.37	2 592
IT0004085244	B.T.P. 06/09 TF 3.75% EUR	330.72	6 143

**FOREIGN PUBLIC DEBT - MARCH 2007**

ISIN	DESC	TURNOV eur m	TRADES
DE0001141414	BOBL 02/08 TF 4.25% EUR	4.71	79
DE0001137131	SCHATZ 06/08 TF 3.00% EUR	3.37	7
DE0001141430	BOBL 03/08 TF 3.50% EUR	3.08	66
DE0001141422	BOBL 03/08 TF 3.00% EUR	2.87	39
ES0000012825	BONOS 02/07 TF 4.25% EUR	2.60	24

**EUROBONDS REPUBLIC OF ITALY - MARCH 2007**

ISIN	DESC	TURNOV eur m	TRADES
US465410BN76	REPUBLIC OF ITALY 05/15 TF 4.50% US	12.82	197
US465410BG26	REPUBLIC OF ITALY 03/33 TF 5.375% U	11.24	508
XS0098449456	REPUBLIC OF ITALY 99/29 TV EUR	10.60	411
US465410BF43	REPUBLIC OF ITALY 03/13 TF 4.375% U	6.80	278
US465410BK38	REPUBLIC OF ITALY 04/09 TF 3,25 USE	6.54	187

**SUPRANATIONAL ENTITIES - MARCH 2007**

ISIN	DESC	TURNOV eur m	TRADES
XS0092084705	B.E.I. 98/09 TF 5.50% GBP	25.32	977
XS0156020587	B.E.I. 02/08 TF 4.50% GBP	12.91	607
US298785DP82	B.E.I. 05/10 TF 4.125% USD	8.60	314
XS0184057171	B.E.I. 04/07 TF 4.5% GBP	8.04	326
XS0083479484	B.E.I. 98/08 TF 6,25% GBP	6.80	227

**BANKS - MARCH 2007**

ISIN	DESC	TURNOV eur m	TRADES
IT0003724066	CAPITALIA 04/09 MULTI COUPON EUR	13.50	966
IT0003351357	BANCA POPOLARE ITALIANA 02/07 MUI	13.13	1 079
IT0000958592	MEDIOBANCA 96/11 ZC ITL	12.57	970
IT0003490528	BANCA INTESA 03/08 TV EUR	10.92	616
IT0003236517	BANCA NAZIONALE DEL LAVORO 02/07	10.29	449

**CORPORATE - MARCH 2007**

ISIN	DESC	TURNOV eur m	TRADES
XS0129648621	FIAT 01/11 TF 6,75% EUR	17.32	685
XS0107525403	FIAT 00/10 TF 6,25% EUR	14.23	561
XS0137544465	FIAT 01/11 STEP COUPON EUR	13.36	851
IT0003801153	ENEL 05/12 TF 3,625% EUR	7.91	763
IT0003801161	ENEL 05/12 TV EUR	4.74	537

**TYPE OF STRUCTURE - MOST TRADED BONDS IN TERMS OF TURNOVER**

**PLAIN VANILLA - MARCH 2007**

ISIN	DESC	TURNOV eur m	TRADES
XS0092084705	B.E.I. 98/09 TF 5.50% GBP	25.32	977
XS0129648621	FIAT 01/11 TF 6,75% EUR	17.32	685
XS0107525403	FIAT 00/10 TF 6,25% EUR	14.23	561
XS0156020587	B.E.I. 02/08 TF 4.50% GBP	12.91	607
US465410BN76	REPUBLIC OF ITALY 05/15 TF 4,50% US	12.82	197

**STRUCTURED INTEREST RATE - MARCH 2007**

ISIN	DESC	TURNOV eur m	TRADES
XS0137544465	FIAT 01/11 STEP COUPON EUR	13.36	851
XS0098449456	REPUBLIC OF ITALY 99/29 TV EUR	10.60	411
XS0200676160	UNICREDITO ITALIANO 04/19 MULTI CO	9.56	28
IT0003681910	MEDIOBANCA 04/14 TV EUR	6.86	162
IT0003694442	CAPITALIA 04/14 MULTI COUPON SUB E	5.82	335

**INFLATION LINKED - MARCH 2007**

ISIN	DESC	TURNOV eur m	TRADES
IT0003490528	BANCA INTESA 03/08 TV EUR	10.92	616
IT0003455919	BANCA INTESA 03/08 TV EUR	9.89	510
IT0003617674	BANCA INTESA 04/09 TV EUR	8.37	395
IT0003594832	BANCA INTESA 04/09 TV EUR	7.29	495
IT0003568075	MEDIOBANCA 03/13 MULTI COUPON EL	5.36	303

**INDEX LINKED - MARCH 2007**

ISIN	DESC	TURNOV eur m	TRADES
IT0003724066	CAPITALIA 04/09 MULTI COUPON EUR	13.50	966
IT0003236517	BANCA NAZIONALE DEL LAVORO 02/07	10.29	449
IT0006568965	BAYERISCHE HYPO-UND VEREINSBAN	6.20	514
IT0006566043	DRESDNER BANK 04/09 ONE COUPON	5.90	552
IT0003684880	BANCA NAZ LAVORO 04/09 MULTI COU	5.71	450

**EQUITY LINKED - MARCH 2007**

ISIN	DESC	TURNOV eur m	TRADES
IT0003351357	BANCA POPOLARE ITALIANA 02/07 MUI	13.13	1 079
IT0003328900	INTESABCI 02/07 MULTI COUPON EUR	8.79	815
IT0003406284	CAPITALIA 03/08 MULTI COUPON EUR	7.82	823
IT0003536825	BANCA INTESA 03/08 MULTI COUPON E	7.75	778
IT0006565979	BAYERISCHE HYPO-UND VEREINSBAN	6.73	587

**FUND LINKED - MARCH 2007**

ISIN	DESC	TURNOV eur m	TRADES
IT0003492375	CREDEM 03/08 ONE COUPON EUR	4.86	460
IT0003274286	BANCA POPOLARE COMMERCIO E IND	2.08	97
IT0003302889	BANCA CARIME 02/07 TV EUR	1.19	70
IT0003273155	BANCA NAZ LAVORO 02/07 ONE COUP	0.39	23
IT0003302095	BANCA NAZ LAVORO 02/07 ONE COUP	0.17	16

**News**

DomesticMOT: 3 structured bonds issued by Mediobanca, an index-linked bond issued by Lehman BrothersTreasury Co. B.V.  
EuroMOT: 5 fixed rate bonds in Euro issued by EIB, a callable fixed rate bond issued by Dresdner Bank AG

Issue Programs: Morgan Stanley Performance Linked Bond and "Morgan Stanley Rates Linked Bonds"



Research & Development  
Piazza degli Affari, 6 - 20123 - Milano  
Tel +39 02 72426.478 - Fax +39 02 8646.4323  
e-mail: [research@borsaitaliana.it](mailto:research@borsaitaliana.it)  
[www.borsaitaliana.it](http://www.borsaitaliana.it)