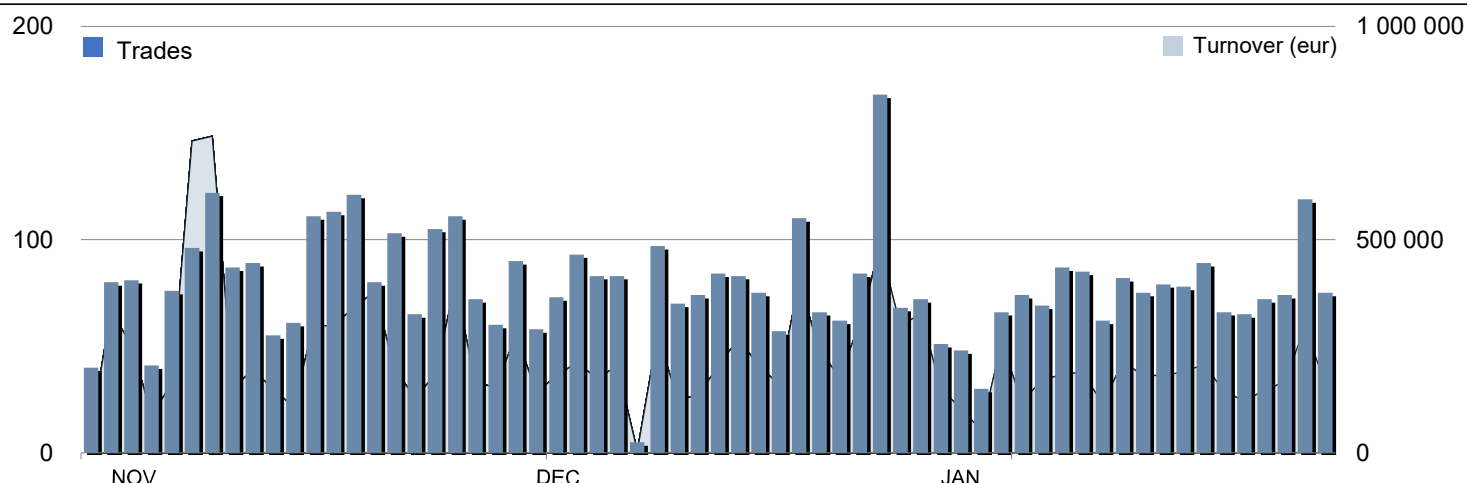




MIV - TRADING EVOLUTION



CLOSED ENDED FUNDS - MAIN INDICATORS

	29 JANUARY 2021		DECEMBER 2020		JANUARY 2021	
	PRICE (eur)	CAPITALISATION (eur)	TRADES	TURNOVER (eur)	TRADES	TURNOVER (eur)
QF ALPHA IMMOBILIARE	715.5	74 317 841	96	258 710	51	204 966
QF AMUNDI RE EUROPA	57.9	4 912 887	104	162 868	133	175 693
QF AMUNDI RE ITALIA	553.4	36 900 159	82	245 661	138	238 421
QF ATLANTIC 1	184.0	95 959 680	124	410 124	130	309 847
QF IMMOBILIARE DINAMICO	54.7	79 649 760	236	422 733	262	422 980
QF IMMOBILIUM 2001	1 262.8	32 833 840	25	58 403	28	56 036
QF MEDIOLANUM RE A	3.4	27 429 483	15	31 210	36	131 518
QF MEDIOLANUM RE B	2.1	143 512 627	102	364 595	98	353 419
QF OPPORTUNITA ITALIA	884.2	51 057 762	229	475 633	362	850 221
QF RISPARMIO IMMOBILIARE UNO ENERGIA	2 037.0	9 777 600	-	-	2	6 111
QF SOCRATE	171.4	44 247 254	149	549 920	120	316 405
QF VALORE IMM GLOBAL	384.3	11 855 501	44	85 481	73	174 605
QF POLIS			158	368 498		
QF UNICREDIT IMM UNO			172	356 485		
TOTAL		612 454 394	1 536	3 790 318	1 433	3 240 222

PERMANENT CAPITAL VEHICLES LISTED ON MIV - MAIN INDICATORS

	29 JANUARY 2021		DECEMBER 2020		JANUARY 2021	
	PRICE (eur)	CAPITALISATION (eur)	TRADES	TURNOVER (eur)	TRADES	TURNOVER (eur)
NB AURORA	8.3	202 130 855	29	718 674	13	114 487

MIV

MIV - Market for Investment Vehicles – is the reference market for the listing of close-end funds and permanent capital vehicles that invests in real economy. MIV can accommodate a wide range of investment strategies:

- Private Equity
- Public and Private Debt
- Venture Capital
- Industry-specific strategy: Real Estate, Infrastructure, Healthcare, etc.
- Multi-strategy

In addition, could be listed on MIV:

- Special Purpose Acquisition Companies (SPACs)
- Investment vehicles other than Alternative Investment Funds (AIFs), including REITs that have not already fully invested their capital

PERMANENT CAPITAL VEHICLES LISTED ON AIM ITALIA - MAIN INDICATORS

	29 JANUARY 2021		DECEMBER 2020		JANUARY 2021	
	PRICE (eur)	CAPITALISATION (eur)	TRADES	TURNOVER (eur)	TRADES	TURNOVER (eur)
4AIM SICAF	364.0	18 072 600	71	173 721	24	57 701

REAL ESTATE INVESTMENT TRUSTS (SIIQ) LISTED ON MTA - MAIN INDICATORS

	29 JANUARY 2021		DECEMBER 2020		JANUARY 2021	
	PRICE (eur)	CAPITALISATION (eur)	TRADES	TURNOVER (eur)	TRADES	TURNOVER (eur)
AEDES	0.6	21 084 919	1 003	1 197 211	491	516 353
COIMA RES	6.3	226 428 150	3 190	5 901 118	2 443	5 019 524
COVIVIO	68.0	FOREIGN	550	1 323 473	3 505	16 649 498
IGD - IMMOBILIARE GRANDE DISTRIBUZIONE	3.6	399 375 582	9 868	35 833 451	7 731	22 439 756
NOVA RE	2.4	26 174 647	141	766 792	159	514 419
RESTART	0.4	13 448 386	377	379 606	331	196 293
TOTAL		686 511 684	15 129	45 401 651	14 660	45 335 843

This document contains text, data, graphics, photographs, illustrations, artwork, names, logos, trade marks, service marks and information ("Information") connected with Borsa Italiana S.p.A. ("Borsa Italiana").

All reasonable efforts have been made to ensure that the Information in this document was correct at the time of publication. However, Borsa Italiana Spa accepts no liability for decisions taken, or systems-related or other work carried out by any party based on this document. The publication of this document does not represent solicitation, by Borsa Italiana, of public saving and is not to be considered as a recommendation by Borsa Italiana as to the suitability of the investment, if any, herein described.

©January 2021 Borsa Italiana S.p.A. All rights reserved.

Markets Analysis

Piazza degli Affari, 6 - 20123 Milano

T +39 02 724261 | Fax +39 02 8646.4323

e-mail: markets_analysis@borsaitaliana.it

www.borsaitaliana.it