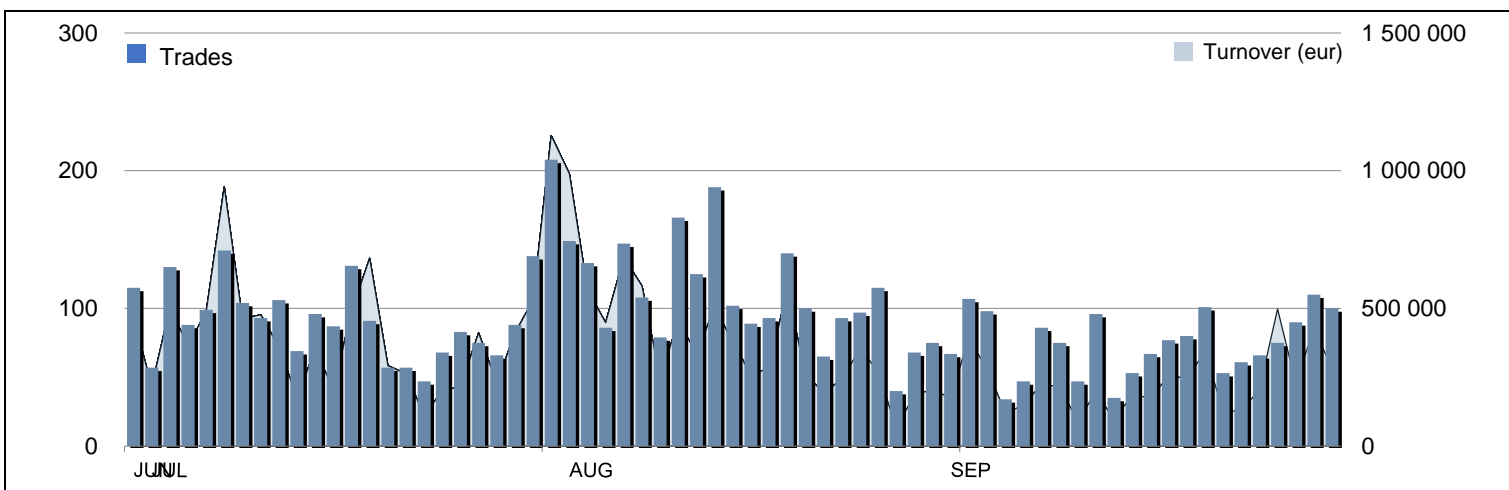




MIV - TRADING EVOLUTION



CLOSED ENDED FUNDS - MAIN INDICATORS

	30 SEPTEMBER 2020		SEPTEMBER 2020		JAN-SEP 2020	
	PRICE (eur)	CAPITALISATION (eur)	TRADES	TURNOVER (eur)	TRADES	TURNOVER (eur)
QF ALPHA IMMOBILIARE	890.7	92 520 424	90	177 795	881	2 993 391
QF AMUNDI RE EUROPA	51.7	4 389 729	112	202 625	3 655	21 630 357
QF AMUNDI RE ITALIA	566.9	37 801 951	130	608 163	1 620	6 496 929
QF ATLANTIC 1	201.9	105 274 451	223	876 454	2 995	15 697 900
QF IMMOBILIARE DINAMICO	59.0	85 842 163	294	826 616	4 030	11 397 871
QF IMMOBILIUM 2001	1 202.0	31 252 000	20	54 561	300	932 757
QF MEDIOLANUM RE A	3.6	28 706 894	7	36 336	305	814 132
QF MEDIOLANUM RE B	2.1	143 065 487	55	271 149	1 205	4 599 298
QF OPPORTUNITA ITALIA	935.0	53 994 519	274	559 388	3 704	14 609 963
QF POLIS	31.9	4 115 062	63	42 900	948	2 536 763
QF RISPARMIO IMMOBILIARE UNO ENERGIA	2 740.0	13 152 000	-	-	8	25 266
QF SOCRATE	169.3	43 702 744	158	422 156	1 290	4 275 550
QF UNICREDIT IMM UNO	26.3	4 204 800	115	365 497	1 648	6 997 163
QF VALORE IMM GLOBAL	422.6	13 036 218	61	100 326	691	1 901 847
TOTAL		661 058 442	1 602	4 543 963	23 280	94 909 185

PERMANENT CAPITAL VEHICLES LISTED ON MIV - MAIN INDICATORS

	30 SEPTEMBER 2020		SEPTEMBER 2020		JAN-SEP 2020	
	PRICE (eur)	CAPITALISATION (eur)	TRADES	TURNOVER (eur)	TRADES	TURNOVER (eur)
NB AURORA	9.0	135 000 000	23	499 327	229	5 463 485

MIV

MIV - Market for Investment Vehicles – is the reference market for the listing of close-end funds and permanent capital vehicles that invests in real economy.

MIV can accommodate a wide range of investment strategies:

- Private Equity
- Public and Private Debt
- Venture Capital
- Industry-specific strategy: Real Estate, Infrastructure, Healthcare, etc.
- Multi-strategy

In addition, could be listed on MIV:

- Special Purpose Acquisition Companies (SPACs)
- Investment vehicles other than Alternative Investment Funds (AIFs), including REITs that have not already fully invested their capital

PERMANENT CAPITAL VEHICLES LISTED ON AIM ITALIA - MAIN INDICATORS

	30 SEPTEMBER 2020		SEPTEMBER 2020		JAN-SEP 2020	
	PRICE (eur)	CAPITALISATION (eur)	TRADES	TURNOVER (eur)	TRADES	TURNOVER (eur)
4AIM SICAF	394.3	19 576 995	17	38 007	240	1 247 819

REAL ESTATE INVESTMENT TRUSTS (SIIQ) LISTED ON MTA - MAIN INDICATORS

	30 SEPTEMBER 2020		SEPTEMBER 2020		JAN-SEP 2020	
	PRICE (eur)	CAPITALISATION (eur)	TRADES	TURNOVER (eur)	TRADES	TURNOVER (eur)
AEDES	0.7	25 643 667	711	961 577	15089	26 997 190
COIMA RES	5.6	200 844 314	2 487	3 388 582	22645	47 923 628
COVIVIO	58.4	FOREIGN	3 549	34 251 548	12387	65 718 706
IGD - IMMOBILIARE GRANDE DISTRIBUZIONE	3.0	325 782 437	5 255	8 734 421	73414	167 553 874
NOVA RE	2.6	28 218 457	120	204 942	1849	2 217 743
RESTART	0.5	16 431 043	421	570 622	10061	13 638 703
TOTAL		596 919 918	12 543	48 111 691	135 445	324 049 845