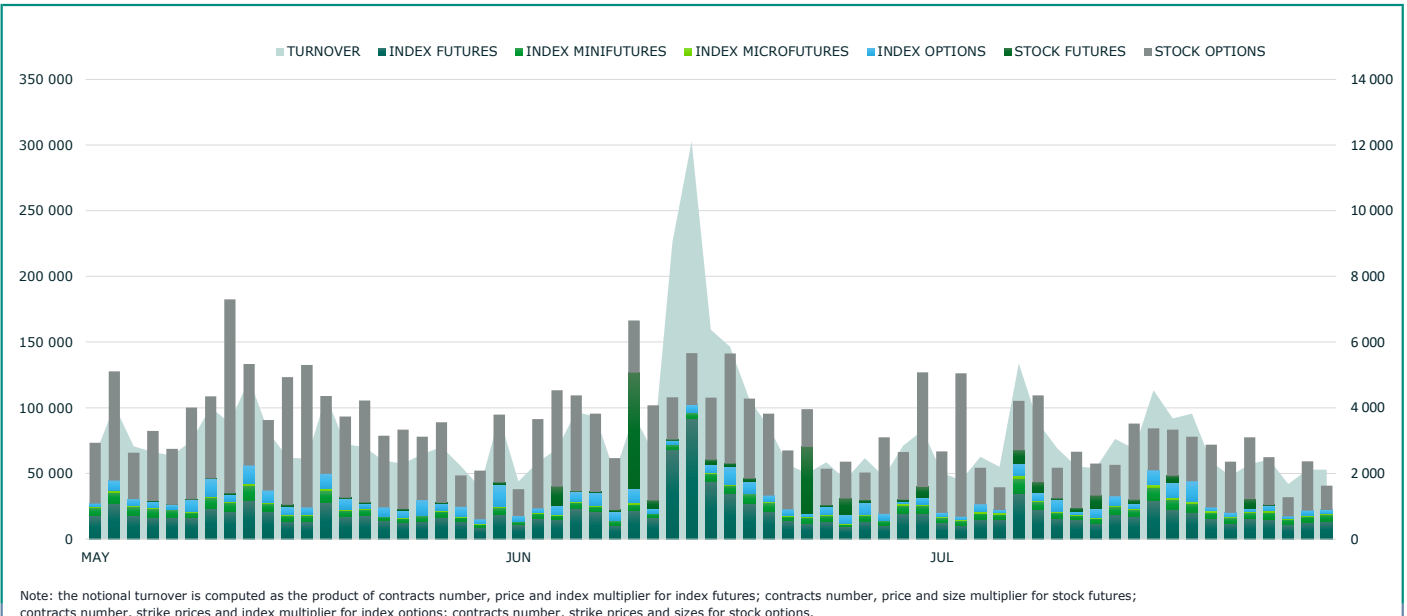




EQUITY DERIVATIVES TRADING



MONTHLY TURNOVER

	MAY 2021		JUNE 2021		JULY 2021		TOTAL 2020		JAN - JUL 2021		OPEN INTEREST
	STANDARD CONTRACTS	TURNOVER eur ML	STANDARD CONTRACTS	TURNOVER eur ML	STANDARD CONTRACTS	TURNOVER eur ML	STANDARD CONTRACTS	TURNOVER eur ML	STANDARD CONTRACTS	TURNOVER eur ML	
FTSE MIB INDEX FUTURES	371 977	45 449.2	525 730	67 091.7	376 148	46 749.6	6 637 198	662 162.2	3 058 168	367 768.1	75 303
FTSE ITALIA PIR PMI TR INDEX FUTURES	159	5.1	3 798	133.2	6	0.2	13 103	304.8	10 579	336.5	1 727
FTSE MIB DIVIDEND INDEX FUTURES	5 590	24.3	5 157	24.1	1 420	6.2	57 374	189.9	35 946	140.6	20 461
TOTAL INDEX FUTURES	377 726	45 478.6	534 685	67 249.0	377 574	46 756.0	6 707 675	662 657.0	3 104 693	368 245.2	97 491
FTSE MIB INDEX miniFUTURES	118 847	2 899.8	95 903	2 439.0	117 723	2 925.1	2 682 599	53 573.8	874 469	20 854.5	9 279
TOTAL INDEX miniFUTURES	118 847	2 899.8	95 903	2 439.0	117 723	2 925.1	2 682 599	53 573.8	874 469	20 854.5	9 279
FTSE MIB INDEX microFUTURES	17 796	86.9	14 830	75.4	24 278	120.6	36 903	154.7	129 933	621.4	2 147
TOTAL INDEX microFUTURES	17 796	86.9	14 830	75.4	24 278	120.6	36 903	154.7	129 933	621.4	2 147
FTSE MIB INDEX OPTIONS	135 662	8 027.7	138 657	8 580.3	109 109	6 694.9	2 125 617	106 867.7	995 896	57 929.9	258 864
FTSE MIB INDEX WEEKLY OPTIONS	10 702	654.5	8 575	540.8	12 076	751.5	191 936	10 065.5	68 804	4 119.6	2 027
TOTAL FTSE MIB INDEX OPTIONS	146 364	8 682.2	147 232	9 121.1	121 185	7 446.4	2 317 553	116 933.2	1 064 700	62 049.4	260 891
ITALIAN STOCK FUTURES	5 190	29.0	186 515	298.1	54 252	187.0	724 134	1 759.8	522 660	1 248.1	61 260
EUROPEAN STOCK FUTURES	55 030	305.8	-	-	-	-	383 698	988.3	113 382	609.3	-
STOCK DIVIDEND FUTURES	17 600	3.4	315	0.4	3 361	3.5	126 908	18.9	78 226	22.3	65 736
TOTAL STOCK FUTURES	77 820	338.2	186 830	298.4	57 613	190.5	1 234 740	2 767.0	714 268	1 879.7	126 996
STOCK OPTIONS	1 359 087	4 758.5	1 064 248	4 119.9	903 424	3 193.0	12 117 539	35 482.8	8 321 846	27 880.9	4 880 924
WEEKLY STOCK OPTIONS	2 406	7.6	4 387	14.1	2 176	16.1	12 877	35.0	15 971	80.2	597
TOTAL STOCK OPTIONS	1 361 493	4 766.1	1 068 635	4 134.0	905 600	3 209.1	12 130 416	35 517.8	8 337 817	27 961.2	4 881 521
TOTAL EQUITY DERIVATIVES	2 100 046	62 251.7	2 048 115	83 316.9	1 603 973	60 647.6	25 109 886	871 603.6	14 225 880	481 611.5	5 378 325

IDEM - EQUITY DERIVATIVES TURNOVER - Stock Futures

	DAYS	STANDARD CONTRACTS		TURNOVER		% TOT SHARES (**)	OPEN INTEREST (***)
				TURNOVER eur m (*)			
		TOTAL	DAILY AVG	TOTAL	DAILY AVG		
ITALIAN STOCK FUTURES							
A2A	22	-	-	-	-	0.0%	-
ACEA	22	-	-	-	-	0.0%	-
ANIMA HOLDING	22	-	-	-	-	0.0%	-
ATLANTIA	22	-	-	-	-	0.0%	-
AUTOGRILL	22	-	-	-	-	0.0%	-
AZIMUT HOLDING	22	-	-	-	-	0.0%	-
BANCA GENERALI	22	-	-	-	-	0.0%	-
BANCA MEDIOLANUM	22	-	-	-	-	0.0%	-
BANCA MONTE PASCHI SIENA	22	-	-	-	-	0.0%	-
BANCO BPM	22	-	-	-	-	0.0%	-
BPER BANCA	22	-	-	-	-	0.0%	-
BREMO	22	-	-	-	-	0.0%	-
BUZZI UNICEM	22	-	-	-	-	0.0%	-
CAMPARI	22	-	-	-	-	0.0%	-
CATTOLICA ASSICURAZIONI	22	-	-	-	-	0.0%	-
CNH INDUSTRIAL	22	-	-	-	-	0.0%	-
ENEL	22	18 730	851	73.4	3.3	2.0%	13 730
ENI	22	18 001	818	88.3	4.0	2.8%	17 300
ERG	22	-	-	-	-	0.0%	-
EXOR	22	-	-	-	-	0.0%	-
FERRARI	22	-	-	-	-	0.0%	-
FINECOBANK	22	-	-	-	-	0.0%	-
GENERALI	22	-	-	-	-	0.0%	10 000
GEOX	22	-	-	-	-	0.0%	-
GVS	22	-	-	-	-	0.0%	-
HERA	22	-	-	-	-	0.0%	-
INTESA SANPAOLO	22	6 000	273	13.2	0.6	0.3%	10 000
IREN	22	-	-	-	-	0.0%	-
ITALGAS	22	-	-	-	-	0.0%	500
LEONARDO	22	-	-	-	-	0.0%	-
MEDIASET	22	5	0	0.0	0.0	0.0%	5
MEDIOBANCA	22	-	-	-	-	0.0%	1 500
MONCLER	22	-	-	-	-	0.0%	-
NEXI	22	-	-	-	-	0.0%	-
PIRELLI & C	22	-	-	-	-	0.0%	-
POSTE ITALIANE	22	-	-	-	-	0.0%	-
PRYSMIAN	22	-	-	-	-	0.0%	-
SAIPEM	22	-	-	-	-	0.0%	-
SARAS	22	-	-	-	-	0.0%	-
SNAM	22	-	-	-	-	0.0%	-
STELLANTIS	22	-	-	-	-	0.0%	1 750
STMICROELECTRONICS	22	-	-	-	-	0.0%	-
TECHNOGYM	22	-	-	-	-	0.0%	-
TELECOM ITALIA	22	1	0	0.0	0.0	0.0%	-
TELECOM ITALIA RSP	22	10 000	455	4.3	0.2	2.4%	5 000
TENARIS	22	-	-	-	-	0.0%	-
TERNA	22	450	20	2.9	0.1	0.5%	450
TOD'S	22	5	0	0.0	0.0	0.0%	5
UNICREDIT	22	1 060	48	4.8	0.2	0.1%	1 020
UNIPOL	22	-	-	-	-	0.0%	-
UNIPOLSAI	22	-	-	-	-	0.0%	-
EUROPEAN STOCK FUTURES							
BANCO SANTANDER	22	-	-	-	-	-	-
BBVA	22	-	-	-	-	-	-
BNP PARIBAS	22	-	-	-	-	-	-
DEUTSCHE BANK	22	-	-	-	-	-	-
IBERDROLA	22	-	-	-	-	-	-
REPSOL	22	-	-	-	-	-	-
SOCIETE GENERALE	22	-	-	-	-	-	-
TELEFONICA	22	-	-	-	-	-	-
STOCK DIVIDEND FUTURES							
ASSICURAZIONI GENERALI DIVIDEND	22	-	-	-	-	-	295
AXA DIVIDEND	22	-	-	-	-	-	20
BANCO BILBAO VIZCAYA ARGENTARIA DIVIDEND	22	-	-	-	-	-	40
BANCO BPM DIVIDEND	22	10	0	0.0	0.0	-	10
BANCO SANTANDER DIVIDEND	22	-	-	-	-	-	-
BNP DIVIDEND	22	-	-	-	-	-	5
DAIMLER DIVIDEND	22	-	-	-	-	-	10
DEUTSCHE TELEKOM DIVIDEND	22	-	-	-	-	-	-
ENEL DIVIDEND	22	-	-	-	-	-	910
ENGIE DIVIDEND	22	-	-	-	-	-	-
ENI DIVIDEND	22	916	42	3.0	0.1	-	6 586
FERRARI DIVIDEND	22	-	-	-	-	-	5
IBERDROLA DIVIDEND	22	-	-	-	-	-	20
INTESA SANPAOLO DIVIDEND	22	2 425	110	0.4	0.0	-	49 015
ORANGE DIVIDEND	22	-	-	-	-	-	-
POSTE ITALIANE DIVIDEND	22	-	-	-	-	-	2 600
SANOFI-AVENTIS DIVIDEND	22	-	-	-	-	-	5
SIEMENS DIVIDEND	22	-	-	-	-	-	20
SNAM DIVIDEND	22	-	-	-	-	-	-
SOCGEN DIVIDEND	22	-	-	-	-	-	25
STELLANTIS DIVIDEND	22	5	0	0.0	0.0	-	2 180
TELECOM ITALIA DIVIDEND	22	-	-	-	-	-	-
TELEFONICA DIVIDEND	22	-	-	-	-	-	20
TERNA DIVIDEND	22	-	-	-	-	-	-
TOTAL DIVIDEND	22	-	-	-	-	-	5
UNICREDIT DIVIDEND	22	5	0	0.0	0.0	-	3 955
VIVENDI DIVIDEND	22	-	-	-	-	-	10

(*) The notional turnover is computed as the product of contracts number, strike prices and sizes for options and as the product of contracts number, prices and sizes for futures.

(**) As percentage on shares turnover (underlying shares).

(***) Open positions at the end of period. Gross figures both for options and futures.

IDEM - EQUITY DERIVATIVES TURNOVER - Stock Options

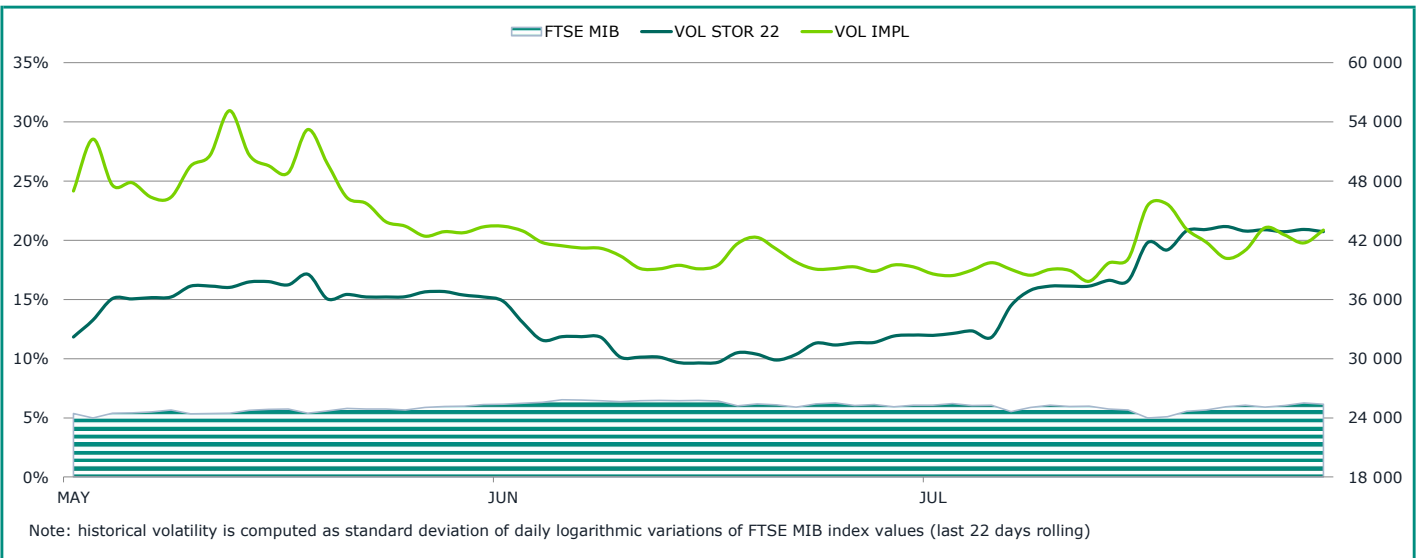
	DAYS	STANDARD CONTRACTS		TURNOVER		% TOT SHARES (**)	OPEN INTEREST (***)
		TOTAL	DAILY AVG	TOTAL	DAILY AVG		
		TURNOVER eur m (*)					
STOCK OPTIONS							
A2A	22	856	39	7.4	0.3	2.7%	2 344
ACEA	22	30	1	0.3	0.0	0.9%	88
AMPLIFON	22	625	28	12.8	0.6	2.5%	740
ANIMA HOLDING	22	231	11	0.5	0.0	0.6%	2 866
ATLANTIA	22	4 660	212	36.5	1.7	8.4%	8 342
AUTOGRILL	22	5 573	253	16.9	0.8	6.8%	5 173
AZIMUT HOLDING	22	2 072	94	21.6	1.0	5.0%	7 018
BANCA GENERALI	22	1 524	69	5.3	0.2	1.4%	3 715
BANCA IFIS	22	97	4	0.1	0.0	0.2%	4 623
BANCA MEDIOLANUM	22	1 640	75	6.7	0.3	2.1%	5 583
BANCA MONTE PASCHI SIENA	22	4 790	218	0.6	0.0	0.4%	71 356
BANCA POPOLARE SONDRIO	22	77	4	0.1	0.0	0.1%	360
BANCO BPM	22	11 911	541	32.3	1.5	5.3%	50 904
BPER BANCA	22	5 404	246	9.0	0.4	1.7%	11 820
BREMBO	22	397	18	2.2	0.1	1.8%	809
BRUNELLO CUCINELLI	22	109	5	0.6	0.0	0.5%	298
BUZZI UNICEM	22	3 091	141	6.9	0.3	2.6%	7 356
CAMPARI	22	1 289	59	13.1	0.6	3.1%	6 040
CATTOLICA ASSICURAZIONI	22	111	5	0.1	0.0	0.1%	1 529
CERVED GROUP	22	13	1	0.1	0.0	0.1%	189
CNH INDUSTRIAL	22	2 677	122	17.8	0.8	2.1%	6 745
DANIELI & C	22	206	9	0.5	0.0	1.8%	1 371
DE' LONGHI	22	53	2	1.0	0.0	1.2%	141
DIASORIN	22	144	7	2.2	0.1	0.4%	995
ENEL	22	88 131	4 006	352.1	16.0	9.6%	470 901
ENI	22	89 114	4 051	463.7	21.1	14.8%	569 687
ERG	22	108	5	1.4	0.1	1.4%	891
EXOR	22	3 317	151	22.2	1.0	4.9%	3 879
FALCK RENEWABLES	22	82	4	0.2	0.0	0.3%	714
FERRARI	22	1 915	87	32.9	1.5	3.1%	13 084
FINCANTIERI	22	80	4	0.1	0.0	0.2%	189
FINCOBANK	22	7 410	337	51.4	2.3	7.5%	14 471
GENERALI	22	135 266	6 148	178.9	8.1	13.3%	857 099
GEOX	22	58	3	0.0	0.0	0.2%	239
GVS	22	12	1	0.1	0.0	0.4%	19
HERA	22	178	8	0.6	0.0	0.3%	486
INTERPUMP GROUP	22	72	3	0.4	0.0	0.2%	432
INTESA SANPAOLO	22	164 949	7 498	378.5	17.2	9.8%	1 195 882
INWIT	22	4 050	184	20.2	0.9	6.2%	6 475
IREN	22	372	17	0.9	0.0	1.1%	2 093
ITALGAS	22	554	25	3.0	0.1	1.5%	2 093
JUVENTUS FOOTBALL CLUB	22	62	3	0.0	0.0	0.2%	258
LEONARDO	22	10 030	456	33.7	1.5	5.4%	31 451
MAIRE TECNIMONT	22	84	4	0.2	0.0	0.4%	236
MEDIASET	22	1 460	66	4.2	0.2	2.0%	2 196
MEDIOBANCA	22	29 844	1 357	135.9	6.2	19.3%	96 745
MONCLER	22	944	43	25.7	1.2	4.0%	2 644
MONDADORI EDITORE	22	69	3	0.1	0.0	0.9%	86
NEXI	22	5 413	246	51.4	2.3	8.2%	8 955
OVS	22	305	14	0.2	0.0	0.2%	2 106
PIAGGIO & C	22	230	10	0.8	0.0	1.6%	753
PIRELLI & C	22	2 951	134	7.9	0.4	2.9%	25 905
POSTE ITALIANE	22	6 494	295	36.7	1.7	8.0%	31 063
PRIMA INDUSTRIE	22	31	1	0.0	0.0	0.5%	49
PRYSMIAN	22	18 026	819	57.1	2.6	14.6%	25 694
RECORDATI	22	482	22	2.6	0.1	0.8%	175
SAFILO GROUP	22	30	1	0.0	0.0	0.0%	342
SAIPEM	22	5 372	244	12.5	0.6	2.6%	15 868
SALVATORE FERRAGAMO	22	302	14	2.6	0.1	2.6%	2 646
SARAS	22	181	8	0.1	0.0	0.1%	1 260
SNAM	22	5 905	268	28.8	1.3	3.9%	24 644
STELLANTIS	22	36 060	1 639	288.2	13.1	9.2%	163 298
STMICROELECTRONICS	22	4 796	218	78.5	3.6	3.2%	9 596
TAMBURI INVESTMENT PARTNERS	22	6	0	0.0	0.0	0.0%	29
TECHNOGYM	22	52	2	0.3	0.0	0.3%	4 246
TELECOM ITALIA	22	97 850	4 448	39.3	1.8	5.1%	588 916
TELECOM ITALIA RSP	22	1 718	78	0.8	0.0	0.4%	17 087
TENARIS	22	7 589	345	33.0	1.5	3.8%	38 115
TERNA	22	2 262	103	14.4	0.7	2.2%	6 043
TOD'S	22	476	22	2.4	0.1	2.2%	2 450
UNICREDIT	22	118 403	5 382	628.2	28.6	18.3%	429 066
UNIPOL	22	2 484	113	5.7	0.3	1.6%	9 114
UNIPOLSAI	22	265	12	0.6	0.0	0.8%	849
WEEKLY STOCK OPTIONS							
ENEL	22	123	6	0.5	0.0	0.0%	111
ENI	22	28	1	0.1	0.0	0.0%	3
GENERALI	22	50	2	0.1	0.0	0.0%	-
INTESA SANPAOLO	22	16	1	0.0	0.0	0.0%	10
STELLANTIS	22	1 682	76	13.9	0.6	0.4%	469
TELECOM ITALIA	22	-	-	-	-	0.0%	-
UNICREDIT	22	277	13	1.4	0.1	0.0%	4

(*) The notional turnover is computed as the product of contracts number, strike prices and sizes for options and as the product of contracts number, prices and sizes for futures.

(**) As percentage on shares turnover (underlying shares).

(***) Open positions at the end of period. Gross figures both for options and futures.

INDEX AND VOLATILITY



MOST TRADED STOCK OPTIONS IN THE MONTH BY UNDERLYING

SHARES	STANDARD CONTRACTS			NOTIONAL TURNOVER		OPEN INTEREST *
	number	% CALL	% PUT	eur ML	% SHARES	
INTESA SANPAOLO	164 965	48.41%	51.59%	378.54	9.8%	1 195 892
GENERALI	135 316	13.79%	86.21%	178.96	13.3%	857 099
UNICREDIT	118 680	64.22%	35.78%	629.64	18.4%	429 070
TELECOM ITALIA	97 850	48.74%	51.26%	39.35	5.1%	588 916
ENI	89 142	60.53%	39.47%	463.85	14.8%	569 690
ENEL	88 254	34.30%	65.70%	352.55	9.6%	471 012
STELLANTIS	37 742	52.28%	47.72%	302.14	9.7%	163 767
MEDIOBANCA	29 844	20.81%	79.19%	135.85	19.3%	96 745
PRYSMIAN	18 026	93.13%	6.87%	57.11	14.6%	25 694
BANCO BPM	11 911	42.91%	57.09%	32.33	5.3%	50 904

* Open positions at the end of period. Gross figures

MOST TRADED STOCK FUTURES IN THE MONTH BY UNDERLYING

SHARES	STANDARD CONTRACTS		TRADES number	NOTIONAL TURNOVER		OPEN INTEREST *
	number	%TOT		eur ML	% SHARES	
ENEL	18 730	34.5%	5	73.40	2.0%	13 730
ENI	18 001	33.2%	7	88.30	2.8%	17 300
TELECOM ITALIA RSP	10 000	18.4%	2	4.33	2.4%	5 000
INTESA SANPAOLO	6 000	11.1%	2	13.19	0.3%	10 000
UNICREDIT	1 060	2.0%	4	4.83	0.1%	1 020
TERNA	450	0.8%	1	2.93	0.5%	450
MEDIASET	5	0.0%	1	0.01	0.0%	5
TOD'S	5	0.0%	1	0.03	0.0%	5
TELECOM ITALIA	1	0.0%	1	0.00	0.0%	-

* Open positions at the end of period. Gross figures

Markets Analysis
Piazza degli Affari, 6 - 20123 Milano
T +39 02 724261 | Fax +39 02 8646.4323
e-mail: markets_analysis@borsaitaliana.it
www.borsaitaliana.it

This publication is for information purposes only and is not a recommendation to engage in investment activities. This publication is provided "as is" without representation or warranty of any kind. Whilst all reasonable care has been taken to ensure the accuracy of the content, Euronext does not guarantee its accuracy or completeness. Euronext will not be held liable for any loss or damages of any nature ensuing from using, trusting or acting on information provided. No information set out or referred to in this publication shall form the basis of any contract. The creation of rights and obligations in respect of financial products that are traded on the exchanges operated by Euronext's subsidiaries shall depend solely on the applicable rules of the market operator. All proprietary rights and interest in or connected with this publication shall vest in Euronext. No part of it may be redistributed or reproduced in any form without the prior written permission of Euronext. Euronext refers to Euronext N.V. and its affiliates. Information regarding trademarks and intellectual property rights of Euronext is located at www.euronext.com/terms-use
© 2021, Euronext N.V. - All rights reserved.