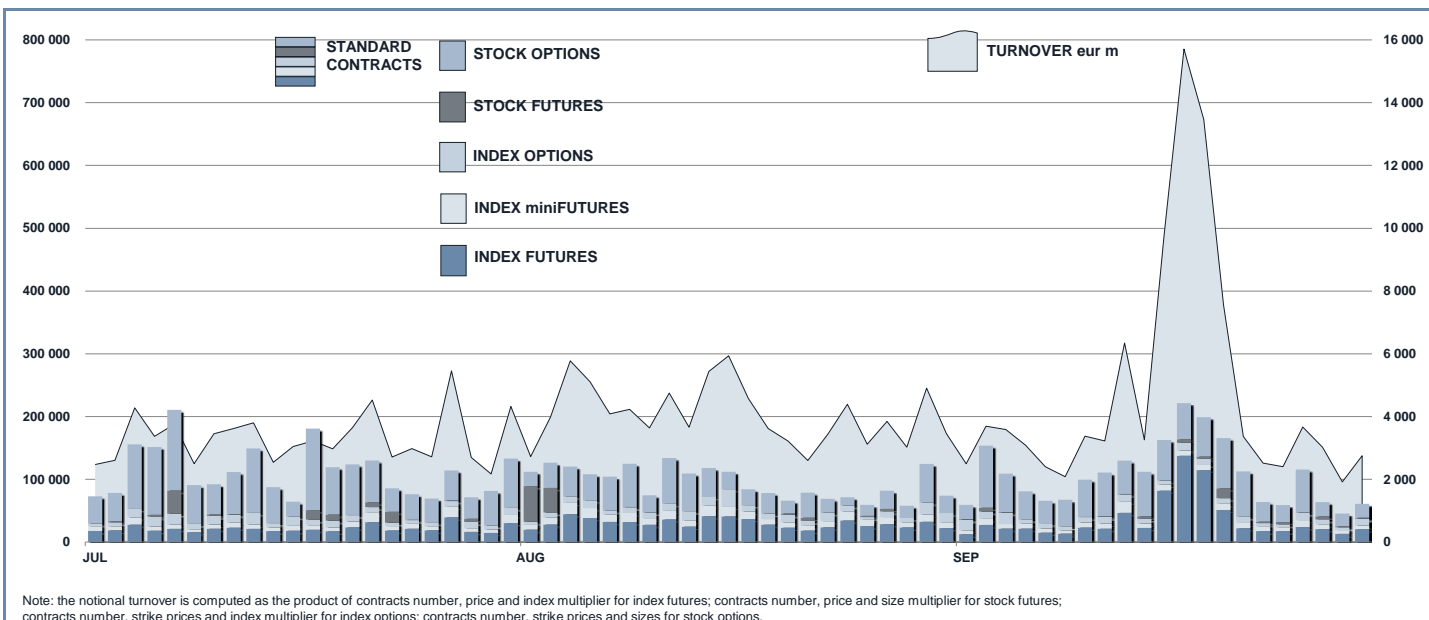




IDEM Statistics

September 2019

EQUITY DERIVATIVES TRADING



MONTHLY TURNOVER

	JULY 2019		AUGUST 2019		SEPTEMBER 2019		TOTAL 2018		JAN - SEP 2019		OPEN INTEREST
	STANDARD CONTRACTS	TURNOVER eur ML	STANDARD CONTRACTS	TURNOVER eur ML	STANDARD CONTRACTS	TURNOVER eur ML	STANDARD CONTRACTS	TURNOVER eur ML	STANDARD CONTRACTS	TURNOVER eur ML	
FTSE MIB INDEX FUTURES	491 631	53 673.9	642 581	66 560.0	733 147	80 202.0	8 370 173	894 641.8	5 099 170	529 957.7	115 901
FTSE ITALIA PIR MID CAP TR INDEX FUTURES	950	25.1	-	-	4 760	125.2	15 413	404.8	12 360	318.9	2 380
FTSE MIB DIVIDEND INDEX FUTURES	550	2.2	340	1.4	8 983	41.6	19 532	78.5	20 849	89.4	8 491
<b>TOTAL INDEX FUTURES</b>	<b>493 131</b>	<b>53 701.3</b>	<b>642 921</b>	<b>66 561.4</b>	<b>746 890</b>	<b>80 368.8</b>	<b>8 405 118</b>	<b>895 125.0</b>	<b>5 132 379</b>	<b>530 366.1</b>	<b>126 772</b>
FTSE MIB INDEX miniFUTURES	185 156	4 041.5	247 214	5 123.1	170 827	3 736.8	3 837 339	81 941.7	1 863 717	38 522.9	6 626
<b>TOTAL INDEX miniFUTURES</b>	<b>185 156</b>	<b>4 041.5</b>	<b>247 214</b>	<b>5 123.1</b>	<b>170 827</b>	<b>3 736.8</b>	<b>3 837 339</b>	<b>81 941.7</b>	<b>1 863 717</b>	<b>38 522.9</b>	<b>6 626</b>
FTSE MIB INDEX OPTIONS	215 988	11 892.2	211 973	10 784.2	174 452	9 245.2	3 591 941	189 295.5	2 035 713	103 569.5	326 507
FTSE MIB INDEX WEEKLY OPTIONS	16 593	902.3	27 851	1 448.7	25 431	1 384.2	206 599	10 981.2	188 536	9 847.2	3 433
<b>TOTAL FTSE MIB INDEX OPTIONS</b>	<b>232 581</b>	<b>12 794.5</b>	<b>239 824</b>	<b>12 232.9</b>	<b>199 883</b>	<b>10 629.5</b>	<b>3 798 540</b>	<b>200 276.7</b>	<b>2 224 249</b>	<b>113 416.7</b>	<b>329 940</b>
ITALIAN STOCK FUTURES	158 067	332.0	53 330	124.8	54 500	218.3	1 254 468	3 508.5	1 386 189	3 564.8	107 445
EUROPEAN STOCK FUTURES	-	-	46 802	139.9	336 790	1 047.8	1 860 072	8 626.7	2 034 106	7 061.9	218 312
STOCK DIVIDEND FUTURES	665	0.3	1 710	1.3	8 700	1.7	17 810	6.2	36 500	11.9	29 135
<b>TOTAL STOCK FUTURES</b>	<b>158 732</b>	<b>332.3</b>	<b>101 842</b>	<b>266.0</b>	<b>399 990</b>	<b>1 267.8</b>	<b>3 132 350</b>	<b>12 141.3</b>	<b>3 456 795</b>	<b>10 638.6</b>	<b>354 892</b>
STOCK OPTIONS	1 492 195	4 730.1	792 337	2 607.9	1 085 232	3 724.9	17 022 994	55 079.2	11 287 748	34 755.7	4 520 736
WEEKLY STOCK OPTIONS	1 573	7.5	1 684	6.5	1 866	7.6	38 976	247.6	22 632	76.5	240
<b>TOTAL STOCK OPTIONS</b>	<b>1 493 768</b>	<b>4 737.6</b>	<b>794 021</b>	<b>2 614.4</b>	<b>1 087 098</b>	<b>3 732.5</b>	<b>17 061 970</b>	<b>55 326.8</b>	<b>11 310 380</b>	<b>34 832.2</b>	<b>4 520 976</b>
<b>TOTAL EQUITY DERIVATIVES</b>	<b>2 563 368</b>	<b>75 607.2</b>	<b>2 025 822</b>	<b>86 797.8</b>	<b>2 604 688</b>	<b>99 735.3</b>	<b>36 235 317</b>	<b>1 244 811.6</b>	<b>23 987 520</b>	<b>727 776.4</b>	<b>5 339 206</b>

## IDEM - EQUITY DERIVATIVES TURNOVER - Stock Futures

	DAYS	STANDARD CONTRACTS		TURNOVER		% TOT SHARES (**)	OPEN INTEREST (***)
		TOTAL	DAILY AVG	TURNOVER eur m (*)			
				TOTAL	DAILY AVG		
<b>ITALIAN STOCK FUTURES</b>							
AZA	21	200	10	1.6	0.1	0.5%	200
ACEA	21	-	-	-	-	0.0%	-
ANIMA HOLDING	21	-	-	-	-	0.0%	-
ATLANTIA	21	397	19	4.3	0.2	0.3%	352
AUTOGRILL	21	-	-	-	-	0.0%	-
AZIMUT HOLDING	21	15	1	0.1	0.0	0.0%	10
BANCA GENERALI	21	-	-	-	-	0.0%	-
BANCA MEDIOLANUM	21	-	-	-	-	0.0%	-
BANCA MONTE PASCHI SIENA	21	-	-	-	-	0.0%	-
BANCO BPM	21	1 625	77	3.1	0.1	0.3%	1 610
BPER BANCA	21	-	-	-	-	0.0%	-
BREMBO	21	1	0	0.0	0.0	0.0%	-
BUZZI UNICEM	21	-	-	-	-	0.0%	-
CAMPARI	21	6	0	0.1	0.0	0.0%	1
CATTOLICA ASSICURAZIONI	21	-	-	-	-	0.0%	-
CIR	21	-	-	-	-	0.0%	-
CNH INDUSTRIAL	21	-	-	-	-	0.0%	-
ENEL	21	1 002	48	3.4	0.2	0.1%	2 550
ENI	21	12 483	594	85.3	4.1	2.0%	13 519
ERG	21	-	-	-	-	0.0%	-
EXOR	21	-	-	-	-	0.0%	-
FERRARI	21	61	3	0.8	0.0	0.1%	35
FIAT CHRYSLER AUTOMOBILES	21	722	34	4.3	0.2	0.2%	695
FINECOBANK	21	-	-	-	-	0.0%	-
GENERALI	21	15 002	714	26.5	1.3	1.4%	15 001
GEOX	21	-	-	-	-	0.0%	-
HERA	21	-	-	-	-	0.0%	-
INTESA SANPAOLO	21	1 832	87	3.9	0.2	0.1%	59 928
IREN	21	-	-	-	-	0.0%	-
ITALGAS	21	-	-	-	-	0.0%	-
LEONARDO	21	17	1	0.1	0.0	0.0%	-
MEDIASET	21	3	0	0.0	0.0	0.0%	-
MEDIOBANCA	21	4 600	219	22.4	1.1	2.4%	1 700
MONCLER	21	-	-	-	-	0.0%	-
NEXI	21	-	-	-	-	0.0%	-
PIRELLI & C	21	900	43	2.5	0.1	0.6%	900
POSTE ITALIANE	21	-	-	-	-	0.0%	-
PRYSMIAN	21	15	1	0.0	0.0	0.0%	15
SAIPEM	21	10	0	0.0	0.0	0.0%	10
SARAS	21	-	-	-	-	0.0%	-
SNAM	21	2	0	0.0	0.0	0.0%	-
STMICROELECTRONICS	21	47	2	0.4	0.0	0.0%	33
TECHNOGYM	6	-	-	-	-	0.0%	-
TELECOM ITALIA	21	8	0	0.0	0.0	0.0%	27
TELECOM ITALIA RSP	21	4 500	214	2.3	0.1	0.8%	2 500
TENARIS	21	2	0	0.0	0.0	0.0%	1
TERNA	21	5	0	0.0	0.0	0.0%	-
TOD'S	21	-	-	-	-	0.0%	-
UBI BANCA	21	14	1	0.0	0.0	0.0%	7
UNICREDIT	21	10 031	478	54.5	2.6	1.1%	7 851
UNIPOL	21	-	-	-	-	0.0%	-
UNIPOLSAI	21	1 000	48	2.4	0.1	1.6%	500
<b>EUROPEAN STOCK FUTURES</b>							
BANCO SANTANDER	21	-	-	-	-	-	-
BBVA	21	-	-	-	-	-	-
BNP PARIBAS	21	93 790	4 466	416.0	19.8	-	105 311
DEUTSCHE BANK	21	-	-	-	-	-	-
IBERDROLA	21	-	-	-	-	-	-
REPSOL	21	-	-	-	-	-	-
SOCIETE GENERALE	21	243 000	11 571	631.8	30.1	-	113 001
TELEFONICA	21	-	-	-	-	-	-
<b>STOCK DIVIDEND FUTURES</b>							
ASSICURAZIONI GENERALI DIVIDEND	21	-	-	-	-	-	835
AXA DIVIDEND	21	-	-	-	-	-	-
BANCO BILBAO VIZCAYA ARGENTARIA DIVIDEND	21	-	-	-	-	-	-
BANCO SANTANDER DIVIDEND	21	-	-	-	-	-	-
BNP DIVIDEND	21	-	-	-	-	-	-
DAIMLER DIVIDEND	21	-	-	-	-	-	35
DEUTSCHE TELEKOM DIVIDEND	21	-	-	-	-	-	80
ENEL DIVIDEND	21	1 300	62	0.4	0.0	-	4 365
ENGIE DIVIDEND	21	-	-	-	-	-	10
ENI DIVIDEND	21	-	-	-	-	-	1 875
FIAT CHRYSLER AUTOMOBILES DIVIDEND	21	-	-	-	-	-	8 425
IBERDROLA DIVIDEND	21	-	-	-	-	-	-
INTESA SANPAOLO DIVIDEND	21	7 200	343	1.2	0.1	-	9 580
ORANGE DIVIDEND	21	-	-	-	-	-	100
POSTE ITALIANE DIVIDEND	21	-	-	-	-	-	15
SANOFI-AVENTIS DIVIDEND	21	-	-	-	-	-	-
SIEMENS DIVIDEND	21	-	-	-	-	-	-
SNAM DIVIDEND	21	-	-	-	-	-	-
SOCGEN DIVIDEND	21	-	-	-	-	-	30
TELECOM ITALIA DIVIDEND	21	-	-	-	-	-	-
TELEFONICA DIVIDEND	21	-	-	-	-	-	40
TERNA DIVIDEND	21	-	-	-	-	-	10
TOTAL DIVIDEND	21	-	-	-	-	-	-
UNICREDIT DIVIDEND	21	200	10	0.1	0.0	-	3 720
VIVENDI DIVIDEND	21	-	-	-	-	-	15

(\*) The notional turnover is computed as the product of contracts number, strike prices and sizes for options and as the product of contracts number, prices and sizes for futures.

(\*\*) As percentage on shares turnover (underlying shares).

(\*\*\*) Open positions at the end of period. Gross figures both for options and futures.

## IDEM - EQUITY DERIVATIVES TURNOVER - Stock Options

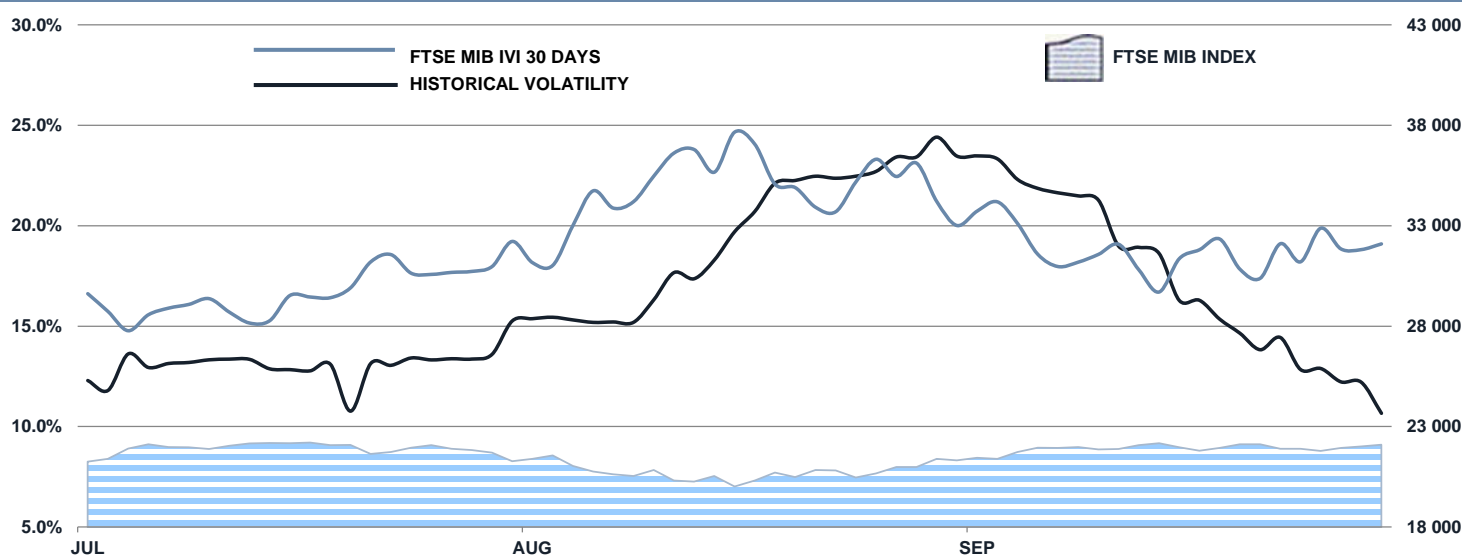
	DAYS	STANDARD CONTRACTS		TURNOVER		% TOT SHARES (**)	OPEN INTEREST (***)
		TOTAL	DAILY AVG	TURNOVER eur m (*)			
				TOTAL	DAILY AVG		
<b>STOCK OPTIONS</b>							
A2A	21	2 533	121	19.7	0.9	5.8%	3 888
ACEA	21	61	3	0.5	0.0	0.9%	67
AMPLIFON	21	30	1	0.3	0.0	0.1%	238
ANIMA HOLDING	21	1 716	82	2.9	0.1	2.6%	13 189
ASTM	6	3	1	0.0	0.0	0.0%	3
ATLANTIA	21	12 712	605	143.0	6.8	11.0%	12 300
AUTOGRILL	21	3 498	167	15.8	0.8	13.1%	4 030
AZIMUT HOLDING	21	2 955	141	24.9	1.2	6.6%	17 609
BANCA GENERALI	21	522	25	1.3	0.1	0.8%	1 555
BANCA IFIS	6	-	-	-	-	0.0%	-
BANCA MEDIOLANUM	21	2 850	136	9.2	0.4	8.1%	2 881
BANCA MONTE PASCHI SIENA	21	6 655	317	1.1	0.1	0.6%	14 592
BANCA POPOLARE SONDRIO	21	15	1	0.0	0.0	0.0%	64
BANCO BPM	21	26 981	1 285	56.7	2.7	5.4%	36 484
BPER BANCA	21	1 244	59	4.5	0.2	1.4%	4 447
BREMBO	21	319	15	1.5	0.1	1.0%	712
BRUNELLO CUCINELLI	21	282	13	0.9	0.0	2.0%	254
BUZZI UNICEM	21	3 741	178	7.1	0.3	3.0%	5 463
CAMPARI	21	285	14	2.4	0.1	0.7%	552
CATTOLICA ASSICURAZIONI	6	-	-	-	-	0.0%	-
CERVED GROUP	21	72	3	0.3	0.0	0.6%	479
CIR	21	-	-	-	-	0.0%	66
CNH INDUSTRIAL	21	4 181	199	19.9	0.9	2.4%	4 762
CREDITO VALTELLINESE	21	-	-	-	-	0.0%	-
DANIELI & C	21	351	17	0.6	0.0	4.5%	360
DE' LONGHI	21	81	4	0.7	0.0	1.2%	186
DIASORIN	21	21	1	0.2	0.0	0.1%	232
ENEL	21	149 450	7 117	466.6	22.2	11.2%	544 975
ENI	21	134 164	6 389	943.6	44.9	22.1%	375 667
ERG	21	688	33	6.3	0.3	7.3%	1 187
EXOR	21	2 959	141	18.0	0.9	4.4%	4 596
FALCK RENEWABLES	6	-	-	-	-	0.0%	-
FERRARI	21	7 538	359	104.2	5.0	6.9%	17 365
FIAT CHRYSLER AUTOMOBILES	21	49 242	2 345	318.6	15.2	14.9%	197 391
FINCANTIERI	6	-	-	-	-	0.0%	-
FINECOBANK	21	2 130	101	10.3	0.5	1.5%	7 363
GENERALI	21	150 558	7 169	247.0	11.8	13.5%	705 752
GEOX	21	79	4	0.1	0.0	0.5%	211
HERA	21	8	0	0.0	0.0	0.0%	44
IMA	21	82	4	0.2	0.0	0.4%	247
INTERPUMP GROUP	21	190	9	0.5	0.0	0.3%	332
INTESA SANPAOLO	21	227 637	10 840	468.4	22.3	8.9%	1 640 330
INWIT	21	3	0	0.0	0.0	0.0%	13
IREN	21	32	2	0.1	0.0	0.1%	379
ITALGAS	21	1 574	75	8.8	0.4	3.2%	4 077
JUVENTUS FOOTBALL CLUB	21	362	17	0.5	0.0	0.2%	638
LEONARDO	21	4 669	222	25.1	1.2	5.3%	12 432
MAIRE TECNIMONT	6	10	2	0.0	0.0	0.1%	10
MEDIASET	21	2 767	132	7.7	0.4	8.0%	6 664
MEDIOBANCA	21	10 481	499	49.3	2.3	5.2%	34 749
MONCLER	21	3 095	147	51.8	2.5	6.8%	8 055
MONDADORI EDITORE	21	-	-	-	-	0.0%	26
NEXI	21	374	18	1.8	0.1	0.5%	577
OVS	21	186	9	0.2	0.0	0.1%	1 145
PIAGGIO & C	21	52	2	0.1	0.0	0.2%	441
PIRELLI & C	21	1 485	71	4.0	0.2	0.9%	9 144
POSTE ITALIANE	21	4 851	231	24.2	1.2	5.0%	6 968
PRIMA INDUSTRIE	21	14	1	0.0	0.0	0.1%	15
PRYSMIAN	21	11 870	565	23.9	1.1	3.3%	36 652
RECORDATI	21	512	24	2.0	0.1	0.6%	912
SAFILO GROUP	21	157	7	0.1	0.0	0.4%	476
SAIPEM	21	6 574	313	29.6	1.4	4.5%	7 542
SALVATORE FERRAGAMO	21	175	8	1.6	0.1	0.7%	2 918
SARAS	21	1 198	57	1.9	0.1	1.5%	1 504
SIAS	21	-	-	-	-	0.0%	7
SNAM	21	5 482	261	24.8	1.2	2.9%	21 841
STMICROELECTRONICS	21	8 580	409	74.6	3.6	5.3%	15 186
TAMBURI INVESTMENT PARTNERS	21	5	0	0.0	0.0	0.1%	242
TECHNOGYM	21	45	2	0.2	0.0	0.2%	67
TELECOM ITALIA	21	101 476	4 832	48.7	2.3	6.7%	436 725
TELECOM ITALIA RSP	21	37 727	1 797	18.9	0.9	6.9%	68 809
TENARIS	21	4 005	191	20.8	1.0	2.1%	12 029
TERNA	21	2 470	118	14.1	0.7	1.9%	5 803
TOD'S	21	291	14	1.3	0.1	3.4%	1 030
UBI BANCA	21	9 299	443	11.5	0.5	1.9%	17 558
UNICREDIT	21	67 420	3 210	374.8	17.8	7.8%	181 562
UNIPOL	21	877	42	2.1	0.1	1.1%	2 790
UNIPOLSAI	21	1 281	61	3.0	0.1	2.1%	1 877
<b>WEEKLY STOCK OPTIONS</b>							
ENEL	21	2	0	0.0	0.0	0.0%	1
ENI	21	403	19	2.8	0.1	0.1%	-
FIAT CHRYSLER AUTOMOBILES	21	40	2	0.2	0.0	0.0%	13
GENERALI	21	456	22	0.8	0.0	0.0%	100
INTESA SANPAOLO	21	443	21	0.9	0.0	0.0%	31
TELECOM ITALIA	21	-	-	-	-	0.0%	-
UNICREDIT	21	522	25	2.8	0.1	0.1%	95

(\*) The notional turnover is computed as the product of contracts number, strike prices and sizes for options and as the product of contracts number, prices and sizes for futures.

(\*\*) As percentage on shares turnover (underlying shares).

(\*\*\*) Open positions at the end of period. Gross figures both for options and futures.

## INDEX AND VOLATILITY



Note: historical volatility is computed as standard deviation of daily logarithmic variations of FTSE MIB index values (last 22 days rolling)

## MOST TRADED STOCK OPTIONS IN THE MONTH BY UNDERLYING

SHARES	STANDARD CONTRACTS		NOTIONAL TURNOVER		OPEN INTEREST *	
	number	% CALL	% PUT	eur ML		% SHARES
INTESA SANPAOLO	228 080	49.24%	50.76%	469.33	8.9%	1 640 361
GENERALI	151 014	41.76%	58.24%	247.83	13.5%	705 852
ENEL	149 452	49.64%	50.36%	466.62	11.2%	544 976
ENI	134 567	50.11%	49.89%	946.43	22.1%	375 667
TELECOM ITALIA	101 476	42.01%	57.99%	48.68	6.7%	436 725
UNICREDIT	67 942	61.77%	38.23%	377.60	7.9%	181 657
FIAT CHRYSLER AUTOMOBILES	49 282	55.17%	44.83%	318.81	14.9%	197 404
TELECOM ITALIA RSP	37 727	72.60%	27.40%	18.91	6.9%	68 809
BANCO BPM	26 981	70.55%	29.45%	56.69	5.4%	36 484
ATLANTIA	12 712	52.80%	47.20%	142.96	11.0%	12 300

\* Open positions at the end of period. Gross figures

## MOST TRADED STOCK FUTURES IN THE MONTH BY UNDERLYING

SHARES	STANDARD CONTRACTS		TRADES number	NOTIONAL TURNOVER		OPEN INTEREST *
	number	%TOT		eur ML	% SHARES	
SOCIETE GENERALE	243 000	62.1%	5	631.80	--	113 001
BNP PARIBAS	93 790	24.0%	6	415.99	--	105 311
GENERALI	15 002	3.8%	3	26.48	1.4%	15 001
ENI	12 483	3.2%	30	85.34	2.0%	13 519
UNICREDIT	10 031	2.6%	25	54.51	1.1%	7 851
MEDIOBANCA	4 600	1.2%	6	22.43	2.4%	1 700
TELECOM ITALIA RSP	4 500	1.2%	2	2.27	0.8%	2 500
INTESA SANPAOLO	1 832	0.5%	18	3.92	0.1%	59 928
BANCO BPM	1 625	0.4%	6	3.09	0.3%	1 610
ENEL	1 002	0.3%	4	3.37	0.1%	2 550

\* Open positions at the end of period. Gross figures

Markets Analysis  
Piazza degli Affari, 6 - 20123 Milano  
T +39 02 724261 | Fax +39 02 8646.4323  
e-mail: markets\_analysis@borsaitaliana.it  
www.borsaitaliana.it

This document contains text, data, graphics, photographs, illustrations, artwork, names, logos, trade marks, service marks and information ("Information") connected with Borsa Italiana S.p.A. ("Borsa Italiana").

All reasonable efforts have been made to ensure that the information in this document was correct at the time of publication. However, Borsa Italiana Spa accepts no liability for decisions taken, or systems-related or other work carried out by any party based on this document. The publication of this document does not represent solicitation, by Borsa Italiana, of public saving and is not to be considered as a recommendation by Borsa Italiana as to the suitability of the investment, if any, herein described.

© September 2019 Borsa Italiana S.p.A. All rights reserved.