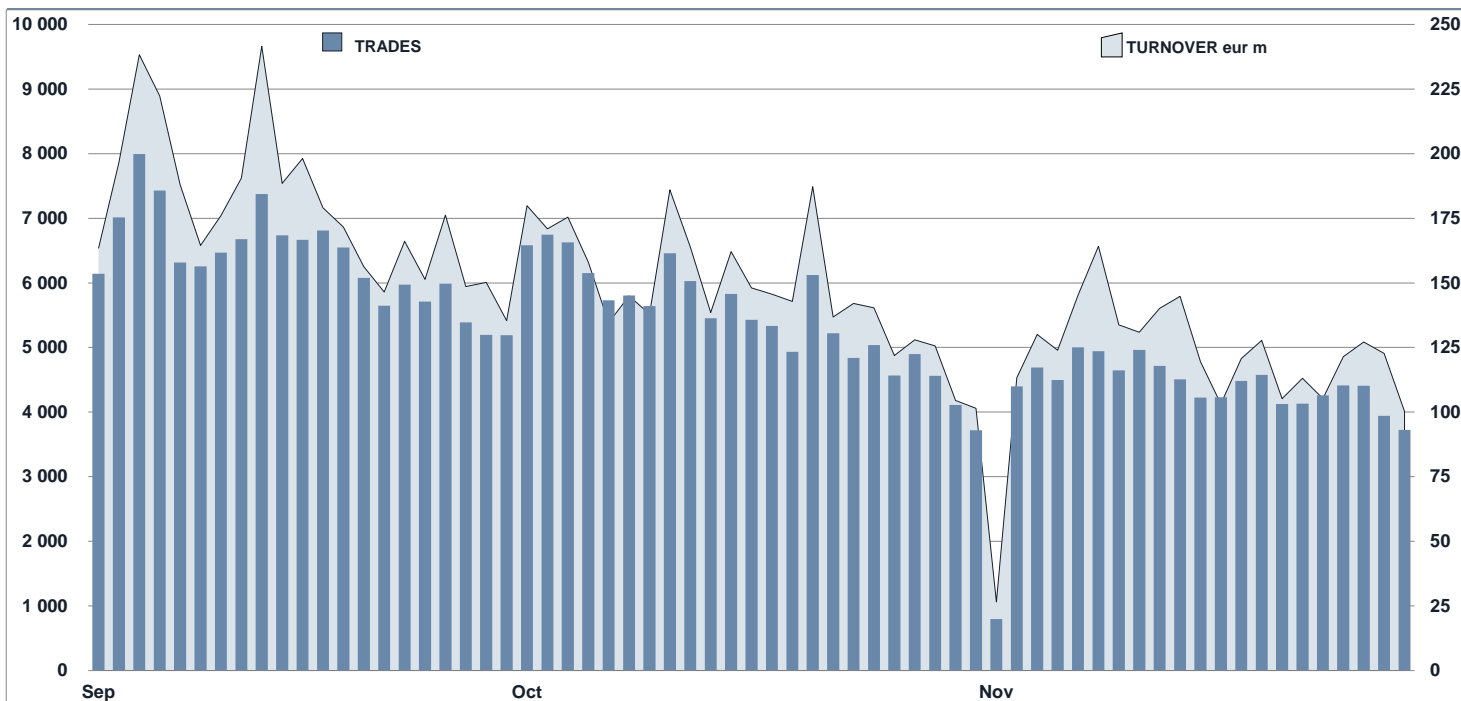


EuroTLX Statistics

November 2019

DAILY TURNOVER



MAIN INDICATORS

	LISTED					TRADING					
	DEC 2018	OCTOBER 2019		NOVEMBER 2019		OCTOBER 2019		NOVEMBER 2019		JAN - NOV 2019	
	LISTED END OF MONTH	LISTED END OF MONTH	NEW LISTED BEGIN OF JAN 2019	LISTED END OF MONTH	NEW LISTED BEGIN OF JAN 2019	TRADES number	TURNOVER eur m	TRADES number	TURNOVER eur m	TRADES number	TURNOVER eur m
EUROTLX											
FIXED INCOME	2 805	2 652	371	2 659	436	125 813	3 376.7	89 677	2 519.0	1 095 069	31 865.2
CERT-X	2 254	3 246	1 862	3 306	2 100	86 331	1 274.2	89 174	1 289.1	751 039	10 654.9
SHARES	587	759	225	621	227	8 147	62.4	7 898	61.5	70 776	555.5
TOTAL	5 646	6 657	2 458	6 586	2 763	220 291	4 713.2	186 749	3 869.5	1 916 884	43 075.7
FIXED INCOME - TYPE OF INSTRUMENT											
GOVERNMENT BONDS EU	335	323	20	311	21	1 748	62.2	1 189	45.7	22 303	744.3
GOVERNMENT BONDS IT	126	143	47	142	50	10 317	529.5	9 422	536.9	109 068	6 729.5
GOVERNMENT BONDS NON-EU	143	134	5	134	5	8 510	172.3	5 760	82.7	85 294	1 635.7
GOVERNMENT BONDS SOVEREIGN	22	27	7	27	7	882	30.3	634	17.9	12 111	344.5
BANKING BONDS NON EURO BOND	718	647	112	685	164	59 925	1 193.6	39 709	781.1	476 147	9 098.0
CORPORATE BONDS	639	639	109	632	114	19 867	604.5	16 090	452.5	175 996	5 398.1
EMERGING MARKETS BONDS	89	91	6	91	6	3 342	84.9	2 250	61.7	30 928	693.0
FINANCIALS BONDS	415	367	41	361	45	5 410	374.1	4 671	345.3	64 898	4 620.1
SUPRANATIONAL BONDS	318	281	24	276	24	15 812	325.2	9 952	195.0	118 324	2 602.1
TOTAL	2 805	2 652	371	2 659	436	125 813	3 376.7	89 677	2 519.0	1 095 069	31 865.2
FIXED INCOME - TYPE OF STRUCTURE											
STRUCTURED INTEREST RATE	233	215	21	212	22	20 377	522.8	14 011	367.9	173 962	4 386.4
PLAIN VANILLA	2 313	2 165	306	2 185	365	90 376	2 525.4	64 743	1 860.2	800 999	24 372.3
INFLATION LINKED	92	91	4	79	4	468	15.5	538	22.2	7 743	285.2
INDEX LINKED	49	69	27	68	28	3 143	53.3	2 334	40.6	26 290	411.2
FUND LINKED	13	12	2	13	3	308	7.7	197	4.2	2 056	44.4
FIXED FLOATER	84	74	4	74	5	10 601	239.1	7 498	214.9	80 400	2 286.4
EQUITY LINKED	2	4	3	4	3	1	0.0	-	-	280	3.8
CURRENCY LINKED	6	5	-	5	-	91	1.5	76	1.5	822	15.0
CREDIT PROTECTION	10	13	3	13	3	94	2.2	123	3.5	1 198	29.6
COMMODITY LINKED	1	2	1	4	3	187	2.4	68	1.0	639	9.3
OTHER STRUCTURES	2	2	-	2	-	167	6.8	89	3.0	680	21.7
TOTAL	2 805	2 652	371	2 659	436	125 813	3 376.7	89 677	2 519.0	1 095 069	31 865.2

