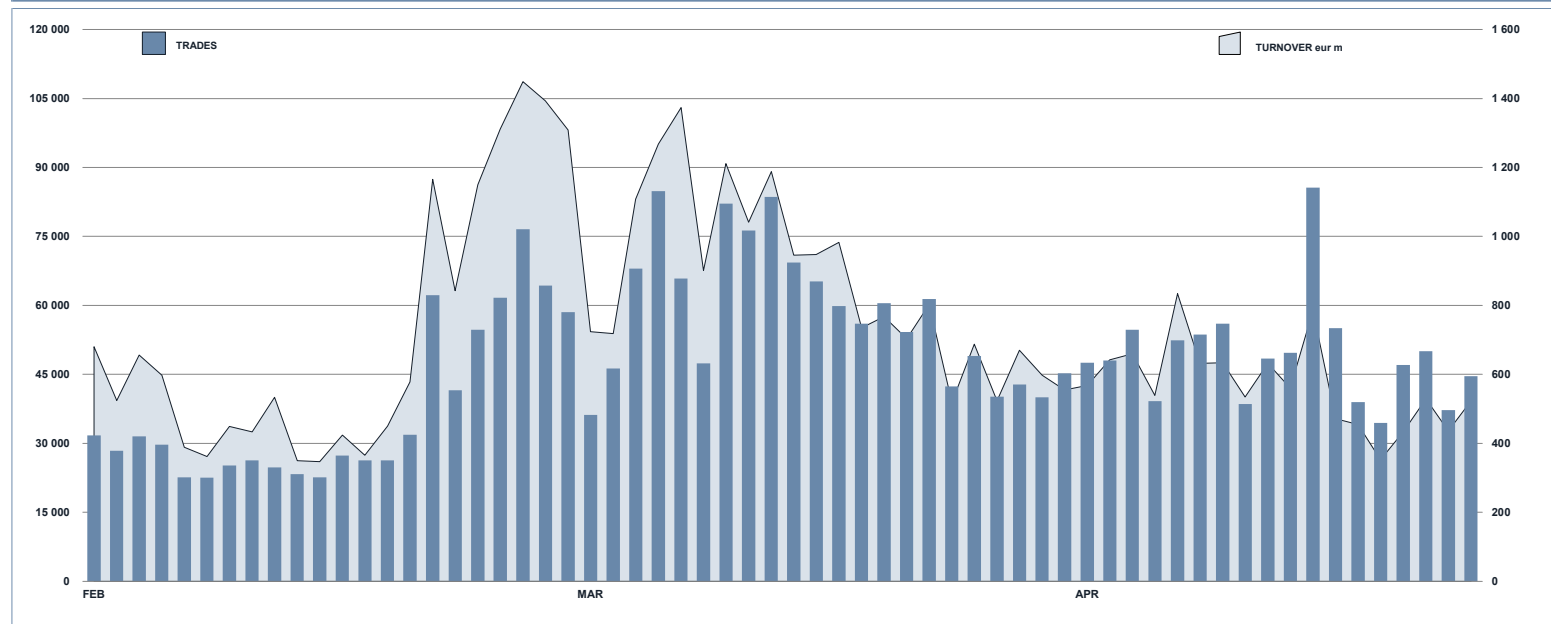


**ETFPLUS DAILY TURNOVER**

**MAIN INDICATORS**

	LISTED INSTRUMENT				TRADING					
	LISTED END of MONTH	MONTH NEW LISTED	AUM in MT		MARCH 2020		APRIL 2020		JAN - APR 2020	
			eur m 31/03/2020	eur m 30/04/2020	Trades	Turnover eur m	Trades	Turnover eur m	Trades	Turnover eur m
ETF - DEVELOPED MARKET	273	0	25 120.14	26 679.99	414 449	8 372.71	179 232	3 660.94	890 654	20 455.63
ETF - CORPORATE AND GOV BOND	336	6	37 084.04	38 943.33	195 265	4 622.45	97 181	2 357.72	500 156	12 583.48
ETF - EMERGING MARKETS	100	0	3 763.68	4 018.42	49 993	1 207.41	28 793	595.19	155 263	3 485.37
ETF - STYLE	108	2	1 936.29	2 105.46	30 016	428.77	16 735	192.15	88 647	1 282.47
OTHERS	250	5	4 650.74	5 394.99	121 960	1 481.04	91 719	1 037.83	406 004	4 667.14
ETCIEN	211	0	6 995.60	7 709.42	502 247	4 404.14	552 785	3 528.23	1 492 351	12 622.03
<b>TOTAL</b>	<b>1 278</b>	<b>13</b>	<b>79 556.49</b>	<b>84 851.61</b>	<b>1 313 930</b>	<b>20 516.60</b>	<b>966 445</b>	<b>11 372.06</b>	<b>3 533 075</b>	<b>55 096.13</b>
<i>of which RFQ</i>						<i>1 523.21</i>		<i>860.25</i>		<i>4 439.80</i>

**MOST TRADED IN THE MONTH BY TRADES AND RELATIVE SPREAD**

Name	Alphab.	ISIN	TRADES		SPREAD	
			number	% TOT	BBO	25 000 €
1 WISDOMTREE WTI CRUDE OIL	CRUD	GB00B19KXV33	117 064	12.1%	0.23%	0.27%
2 WISDOMTREE WTI CRUDE OIL 2X DAILY LEV	LOIL	JE00BD09Q840	94 986	9.8%	0.63%	0.85%
3 SG ETC WTI OIL +3X DAILY LEV COLLATERAL	OIL3L	XS1957212548	29 919	3.1%	1.31%	0.00%
4 WISDOMTREE PHYSICAL GOLD	PHAU	JE00B1VS3770	20 182	2.1%	0.13%	0.25%
5 WISDOMTREE BRENT CRUDE OIL	BRNT	JE00B78CV999	16 915	1.8%	0.43%	0.50%
6 WISDOMTREE WTI CRUDE OIL 3X DAILY SHORT	3OIS	IE00B7SX5Y86	16 390	1.7%	1.18%	1.35%
7 LYXOR FTSEMIB DAI 2X LEV UCITS ETF DIST	LEVMB	FR0010446658	13 982	1.4%	0.13%	0.14%
8 WISDOMTREE FTSE MIB 3X DAILY LEVERAGED	3ITL	IE00B8N83063	13 783	1.4%	0.23%	0.24%
9 WISDOMTREE NATURAL GAS 3X DAILY LEV	3NGL	IE00B8VC8061	13 411	1.4%	1.64%	1.73%
10 WISDOMTREE S&P 500 3X DAILY SHORT	3USS	IE00B8K7KM88	10 988	1.1%	0.52%	0.61%

**MOST TRADED IN THE MONTH BY TURNOVER AND RELATIVE SPREAD**

Name	Alphab.	ISIN	TURNOVER		SPREAD	
			eur m	% TOT	BBO	25 000 €
1 WISDOMTREE WTI CRUDE OIL	CRUD	GB00B19KXV33	967	8.5%	0.23%	0.27%
2 WISDOMTREE WTI CRUDE OIL 2X DAILY LEV	LOIL	JE00BD09Q840	315	2.8%	0.63%	0.85%
3 WISDOMTREE PHYSICAL GOLD	PHAU	JE00B1VS3770	211	1.9%	0.13%	0.25%
4 ISHARES CORE EURO STOXX 50 UCITS ETF	EUE	IE0008471009	186	1.6%	0.09%	0.09%
5 ISHARES CORE S&P 500 UCITS ETF USD ACC	CSSPX	IE00B58MR087	180	1.6%	0.06%	0.08%
6 ISHARES CORE EURO STOXX 50 UCITS ETF ACC	CSSXSE	IE00B53L3W79	159	1.4%	0.11%	0.11%
7 LYXOR EURO OVERNIGHT RETURN UCITS ETF	LEONIA	FR0010510800	156	1.4%	0.02%	0.02%
8 LYXOR FTSE MIB UCITS ETF - DIST	ETFBM	FR0010010827	147	1.3%	0.07%	0.07%
9 ISHARES CORE MSCI WORLD UCITS ETF ACC	SWDA	IE00B4L5Y983	139	1.2%	0.10%	0.11%
10 LYXOR FTSEMIB DAI 2X LEV UCITS ETF DIST	LEVMB	FR0010446658	138	1.2%	0.13%	0.14%

**MOST TRADED IN THE YEAR BY TRADES AND RELATIVE SPREAD**

Name	Alphab.	ISIN	TRADES		SPREAD	
			number	% TOT	BBO	25 000 €
1 WISDOMTREE WTI CRUDE OIL	CRUD	GB00B19KXV33	160 512	4.5%	0.15%	0.17%
2 WISDOMTREE WTI CRUDE OIL 2X DAILY LEV	LOIL	JE00BD09Q840	128 429	3.6%	0.46%	0.59%
3 LYXOR FTSEMIB DAI 2X LEV UCITS ETF ACC	XBRMB	FR0010446666	83 306	2.4%	0.14%	0.15%
4 WISDOMTREE FTSE MIB 3X DAILY SHORT	3ITS	IE00B873CW36	80 278	2.3%	0.21%	0.24%
5 LYXOR FTSEMIB DAI 2X LEV UCITS ETF DIST	LEVMB	FR0010446658	69 514	2.0%	0.14%	0.15%
6 WISDOMTREE WTI CRUDE OIL 3X DAILY LEV	3OIL	IE00B7ZQC814	66 039	1.9%	0.22%	0.24%
7 WISDOMTREE PHYSICAL GOLD	PHAU	JE00B1VS3770	64 590	1.8%	0.08%	0.15%
8 WISDOMTREE NATURAL GAS 3X DAILY LEV	3NGL	IE00B8VC8061	62 601	1.8%	1.22%	1.31%
9 SG ETC WTI OIL +3X DAILY LEV COLLATERAL	OIL3L	XS1957212548	62 273	1.8%	1.31%	1.87%
10 WISDOMTREE WTI CRUDE OIL 3X DAILY SHORT	3OIS	IE00B7SX5Y86	60 760	1.7%	0.72%	0.80%

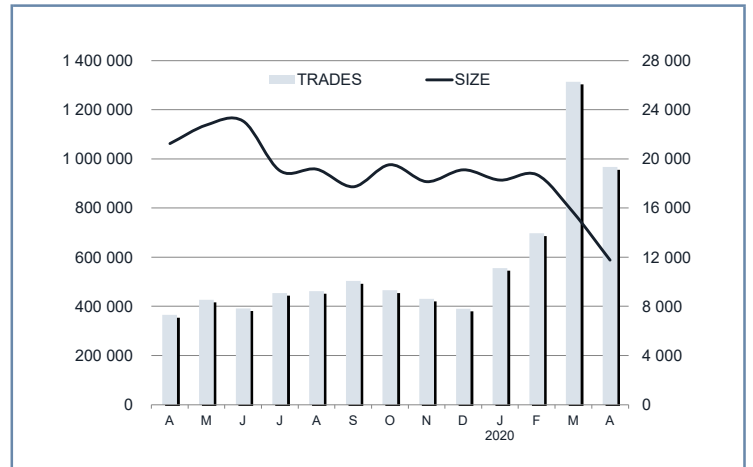
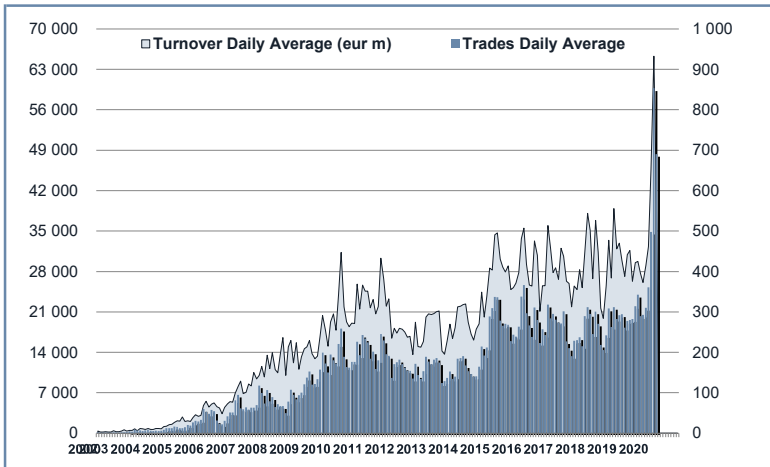
**MOST TRADED IN THE YEAR BY TURNOVER AND RELATIVE SPREAD**

Name	Alphab.	ISIN	TURNOVER		SPREAD	
			eur m	% TOT	BBO	25 000 €
1 WISDOMTREE WTI CRUDE OIL	CRUD	GB00B19KXV33	1 457	2.6%	0.15%	0.17%
2 LYXOR FTSEMIB DAI 2X LEV UCITS ETF ACC	XBRMB	FR0010446666	1 165	2.1%	0.14%	0.15%
3 WISDOMTREE FTSE MIB 3X DAILY SHORT	3ITS	IE00B873CW36	876	1.6%	0.21%	0.24%
4 WISDOMTREE PHYSICAL GOLD	PHAU	JE00B1VS3770	818	1.5%	0.08%	0.15%
5 LYXOR FTSEMIB DAI 2X LEV UCITS ETF DIST	LEVMB	FR0010446658	812	1.5%	0.14%	0.15%
6 WISDOMTREE WTI CRUDE OIL 3X DAILY LEV	CSSPX	IE00B58MR087	793	1.4%	0.08%	0.10%
7 ISHARES CORE EURO STOXX 50 UCITS ETF	EUE	IE0008471009	705	1.3%	0.09%	0.10%
8 WISDOMTREE WTI CRUDE OIL 3X DAILY LEV	3OIL	IE00B7ZQC814	698	1.3%	0.22%	0.24%
9 ISHARES CORE MSCI WORLD UCITS ETF ACC	SWDA	IE00B4L5Y983	656	1.2%	0.10%	0.10%
10 LYXOR FTSE MIB UCITS ETF - DIST	ETFBM	FR0010010827	656	1.2%	0.08%	0.09%

### TRADING BY SIZE OF TURNOVER

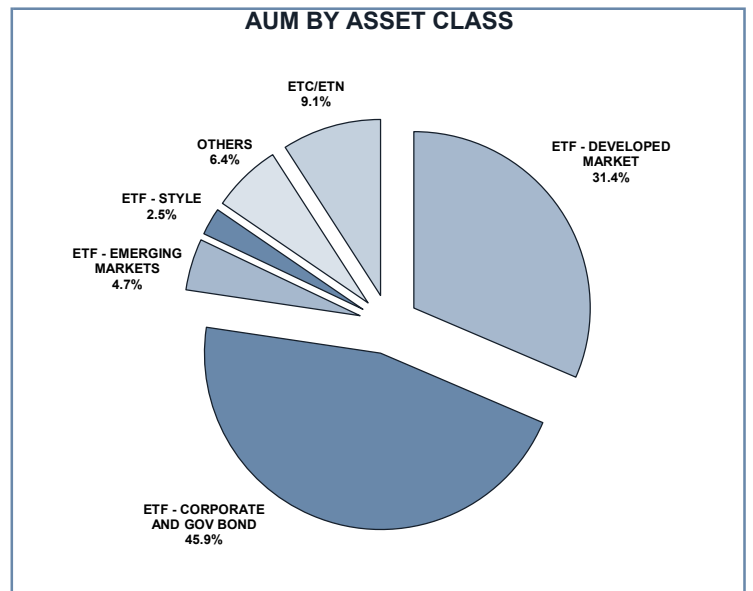
SIZE OF TURNOVER		MARCH 2020		APRIL 2020		YEAR 2020			
		Trades	Turnover eur m	Trades	Turnover eur m	Trades	% TOT	Turnover eur m	% TOT
-	500	180 394	41.9	143 017	34.4	448 558	12.7%	106.0	0.2%
500	1 000	126 822	94.7	106 699	79.1	332 001	9.4%	247.7	0.4%
1 000	2 000	201 078	289.2	168 742	242.3	551 631	15.6%	787.1	1.4%
2 000	3 000	140 985	346.6	101 080	247.8	357 466	10.1%	880.2	1.6%
3 000	4 000	78 819	273.0	62 029	215.2	215 406	6.1%	746.3	1.4%
4 000	5 000	68 991	311.8	52 790	238.6	190 760	5.4%	863.3	1.6%
5 000	6 000	55 236	300.0	47 142	256.1	164 578	4.7%	893.9	1.6%
6 000	7 000	33 941	219.7	25 125	162.3	96 954	2.7%	627.9	1.1%
7 000	8 000	29 117	218.1	19 682	147.4	80 358	2.3%	601.8	1.1%
8 000	9 000	27 149	230.6	18 056	153.2	73 660	2.1%	625.2	1.1%
9 000	10 000	28 468	271.5	19 607	187.4	80 123	2.3%	764.8	1.4%
10 000	15 000	90 327	1 095.6	60 322	723.9	264 434	7.5%	3 179.0	5.8%
15 000	20 000	52 353	910.8	32 298	562.1	137 996	3.9%	2 393.9	4.3%
20 000	25 000	35 141	782.0	21 137	469.0	98 550	2.8%	2 185.2	4.0%
25 000	30 000	24 433	668.5	15 212	413.5	66 380	1.9%	1 814.0	3.3%
30 000	35 000	18 237	592.2	9 322	301.2	46 662	1.3%	1 509.8	2.7%
35 000	40 000	14 478	541.8	8 065	301.9	37 924	1.1%	1 419.3	2.6%
40 000	45 000	12 251	520.1	6 702	284.1	31 400	0.9%	1 331.3	2.4%
45 000	50 000	11 421	543.0	6 285	298.8	29 517	0.8%	1 406.0	2.6%
50 000	75 000	35 961	2 169.0	19 399	1 153.3	100 998	2.9%	6 050.8	11.0%
75 000	100 000	16 371	1 414.6	8 527	744.0	45 930	1.3%	3 975.9	7.2%
100 000	125 000	10 106	1 118.1	4 351	479.5	24 616	0.7%	2 720.0	4.9%
125 000	150 000	5 328	726.2	2 837	388.5	13 727	0.4%	1 877.9	3.4%
150 000		16 523	6 837.4	8 019	3 288.5	43 446	1.2%	18 088.9	32.8%
<b>TOTAL</b>		<b>1 313 930</b>	<b>20 516.5</b>	<b>966 445</b>	<b>11 372.1</b>	<b>3 533 075</b>		<b>55 096.1</b>	

### TRADING EVOLUTION



### FOCUS

MONTH	INSTRUMENT WITH HIGHEST TURNOVER		INSTRUMENT WITH HIGHEST TRADES NUMBER	
	ALPHA CODE	EUR	ALPHA CODE	NUMBER
APRIL	EMUEUA	229 989 636	3OIL	16 137
MAY	CSSPX	249 469 851	3OIL	20 101
JUNE	IWDE	190 059 082	3OIL	20 721
JULY	ACWIE	207 360 236	3OIL	19 021
AUGUST	CSSPX	196 911 706	3OIL	26 456
SEPTEMBER	3OIL	268 654 173	3OIL	34 093
OCTOBER	3OIL	258 487 586	3OIL	29 619
NOVEMBER	3OIS	229 243 385	3NGL	24 141
DECEMBER	3OIL	272 626 134	3NGL	18 947
JANUARY 2020	3OIL	287 407 232	3OIL	26 140
FEBRUARY	3OIL	303 742 278	3OIL	30 010
MARCH	XBRMIB	748 487 666	XBRMIB	54 636
APRIL	CRUD	967 346 425	CRUD	117 064



## SPREAD

	SPREAD							
	BBO		5 000 €		15 000 €		25 000 €	
	SPREAD	% OBSER	SPREAD	% OBSER	SPREAD	% OBSER	SPREAD	% OBSER
<b>ETF - DEVELOPED MARKET</b>	<b>0.16%</b>	<b>99.61%</b>	<b>0.17%</b>	<b>99.60%</b>	<b>0.17%</b>	<b>99.58%</b>	<b>0.18%</b>	<b>99.56%</b>
EQUITY ITALY	0.19%	99.45%	0.20%	99.45%	0.21%	99.45%	0.21%	99.45%
EQUITY EUROPE - REGIONAL	0.16%	99.76%	0.16%	99.76%	0.16%	99.75%	0.16%	99.74%
EQUITY EUROPE - SINGLE COUNTRY	0.20%	99.70%	0.21%	99.69%	0.22%	99.57%	0.22%	99.49%
EQUITY WORLD	0.16%	99.47%	0.16%	99.46%	0.17%	99.42%	0.17%	99.37%
EQUITY NORTH AMERICA	0.15%	99.53%	0.16%	99.53%	0.16%	99.52%	0.17%	99.51%
EQUITY PACIFIC	0.20%	99.85%	0.20%	99.84%	0.20%	99.82%	0.21%	99.80%
EQUITY SHORT (DEVELOPED)	0.17%	99.56%	0.18%	99.55%	0.18%	99.54%	0.18%	99.52%
BUYWRITE - COVERED CALL	0.00%	0.00%	0.00%	0.00%	0.00%	0.00%	0.00%	0.00%
LEVERAGED LONG	0.19%	99.23%	0.20%	99.25%	0.20%	99.22%	0.20%	99.17%
LEVERAGED SHORT	0.24%	99.31%	0.25%	99.29%	0.25%	99.28%	0.26%	99.18%
PROTECTIVE PUT	0.00%	0.00%	0.00%	0.00%	0.00%	0.00%	0.00%	0.00%
<b>ETF - EMERGING MARKETS</b>	<b>0.26%</b>	<b>99.72%</b>	<b>0.27%</b>	<b>99.69%</b>	<b>0.27%</b>	<b>99.66%</b>	<b>0.27%</b>	<b>99.62%</b>
EQUITY EMERGING - AFRICA/MIDDLE EAST	0.86%	99.90%	0.97%	98.76%	0.91%	97.41%	0.92%	96.37%
EQUITY EMERGING - ASIA	0.33%	99.81%	0.34%	99.80%	0.35%	99.76%	0.36%	99.70%
EQUITY EMERGING - CENTRE/SOUTH AMERICA	0.64%	99.78%	0.67%	99.75%	0.68%	99.65%	0.69%	99.57%
EQUITY EMERGING - EAST EUROPE	0.41%	99.74%	0.42%	99.73%	0.43%	99.72%	0.44%	99.68%
EQUITY EMERGING - WORLD	0.18%	99.66%	0.18%	99.65%	0.18%	99.64%	0.19%	99.64%
EQUITY SHORT (EMERGING)	0.00%	0.00%	0.00%	0.00%	0.00%	0.00%	0.00%	0.00%
<b>ETF - CORPORATE GOVERNMENT BONDS</b>	<b>0.36%</b>	<b>99.83%</b>	<b>0.38%</b>	<b>99.83%</b>	<b>0.40%</b>	<b>99.77%</b>	<b>0.41%</b>	<b>99.59%</b>
INFLATION	0.49%	99.92%	0.50%	99.89%	0.52%	99.86%	0.54%	99.82%
LIQUIDITY	0.06%	99.93%	0.06%	99.93%	0.06%	99.92%	0.06%	99.92%
CORPORATE BOND - EURO	0.33%	99.88%	0.34%	99.88%	0.35%	99.88%	0.36%	99.86%
CORPORATE BOND - EX EURO	0.59%	99.90%	0.60%	99.88%	0.62%	99.87%	0.64%	99.80%
CORPORATE BOND - EMERGING	0.68%	99.91%	0.73%	99.91%	0.78%	99.91%	0.81%	99.91%
CORPORATE BOND - WORLD	0.62%	99.57%	0.65%	99.58%	0.69%	99.58%	0.72%	99.52%
CORPORATE BOND - HIGH YIELD	0.47%	99.57%	0.50%	99.59%	0.54%	99.32%	0.56%	98.48%
AGGREGATE BOND	0.61%	99.81%	0.63%	99.80%	0.66%	99.73%	0.67%	99.60%
BOND SHORT	0.38%	99.97%	0.39%	99.96%	0.40%	99.12%	0.41%	99.01%
BOND LEVERAGED LONG	0.30%	100.00%	0.31%	100.00%	0.31%	100.00%	0.31%	99.90%
BOND LEVERAGED SHORT	0.25%	99.80%	0.26%	99.80%	0.27%	99.78%	0.28%	99.71%
GOVERNMENT BONDS - EMERGING	0.53%	99.81%	0.55%	99.81%	0.59%	99.58%	0.61%	99.05%
GOVERNMENT BONDS - EURO	0.21%	99.91%	0.21%	99.90%	0.22%	99.89%	0.22%	99.85%
GOVERNMENT BONDS - ITALY	0.37%	99.67%	0.38%	99.76%	0.39%	99.77%	0.39%	99.79%
GOVERNMENT BONDS - WORLD	0.39%	99.83%	0.40%	99.80%	0.42%	99.79%	0.43%	99.56%
GOVERNMENT BONDS - EX EURO	0.23%	99.79%	0.24%	99.79%	0.25%	99.79%	0.26%	99.78%
<b>ETF - STYLE</b>	<b>0.36%</b>	<b>99.88%</b>	<b>0.37%</b>	<b>99.85%</b>	<b>0.38%</b>	<b>99.70%</b>	<b>0.39%</b>	<b>99.61%</b>
EQUITY STYLE (DEVELOPED)	0.36%	99.88%	0.37%	99.86%	0.38%	99.82%	0.38%	99.76%
EQUITY STYLE (EMERGING)	0.69%	99.95%	0.70%	99.29%	0.71%	92.91%	0.72%	91.13%
<b>ETF - OTHERS</b>	<b>0.45%</b>	<b>99.76%</b>	<b>0.48%</b>	<b>99.74%</b>	<b>0.51%</b>	<b>99.49%</b>	<b>0.53%</b>	<b>99.22%</b>
EQUITY SECTORS (DEVELOPED)	0.35%	99.80%	0.37%	99.78%	0.38%	99.68%	0.39%	99.54%
EQUITY SECTORS (EMERGING)	0.00%	0.00%	0.00%	0.00%	0.00%	0.00%	0.00%	0.00%
EQUITY THEMATIC	0.44%	99.74%	0.47%	99.71%	0.51%	99.46%	0.53%	99.11%
COMMODITIES	0.88%	99.74%	0.93%	99.70%	0.98%	98.84%	1.01%	98.68%
CREDIT INDICES	0.72%	99.97%	0.74%	99.97%	0.75%	99.98%	0.76%	99.98%
REAL ESTATE	0.40%	99.89%	0.41%	99.88%	0.42%	99.82%	0.42%	99.76%
LEVERAGED CREDIT INDICES	0.00%	0.00%	0.00%	0.00%	0.00%	0.00%	0.00%	0.00%
VOLATILITY INDICES	0.56%	99.07%	0.63%	99.10%	0.70%	98.74%	0.73%	98.52%
CURRENCIES INDICES	0.00%	0.00%	0.00%	0.00%	0.00%	0.00%	0.00%	0.00%
FLEXIBLE	0.78%	99.98%	0.84%	99.88%	0.90%	99.45%	0.93%	99.36%
MULTI ASSET	2.97%	100.00%	2.93%	99.41%	2.93%	99.41%	1.50%	66.87%
<b>ETF</b>	<b>0.30%</b>	<b>99.74%</b>	<b>0.31%</b>	<b>99.74%</b>	<b>0.32%</b>	<b>99.68%</b>	<b>0.33%</b>	<b>99.55%</b>

Data obtained from 1 minute snapshots of the trading book (5 levels) during trading days of the relevant month.

Market Spread: means the difference between bid and ask prices divided by the mid quote at which it was possible to buy and sell simultaneously the relevant amount.

% Obser: means the percentage of observations at which it would be possible to buy and sell simultaneously the relevant amount.

The average showed is the weighted average on AUM deposited in Monte Titoli is used: it's the average calculated taking into account the AUM (asset under management) deposited in Monte Titoli.

## News

ETFplus AUM reached €84.85bn (+13.16% vs April 2019)

