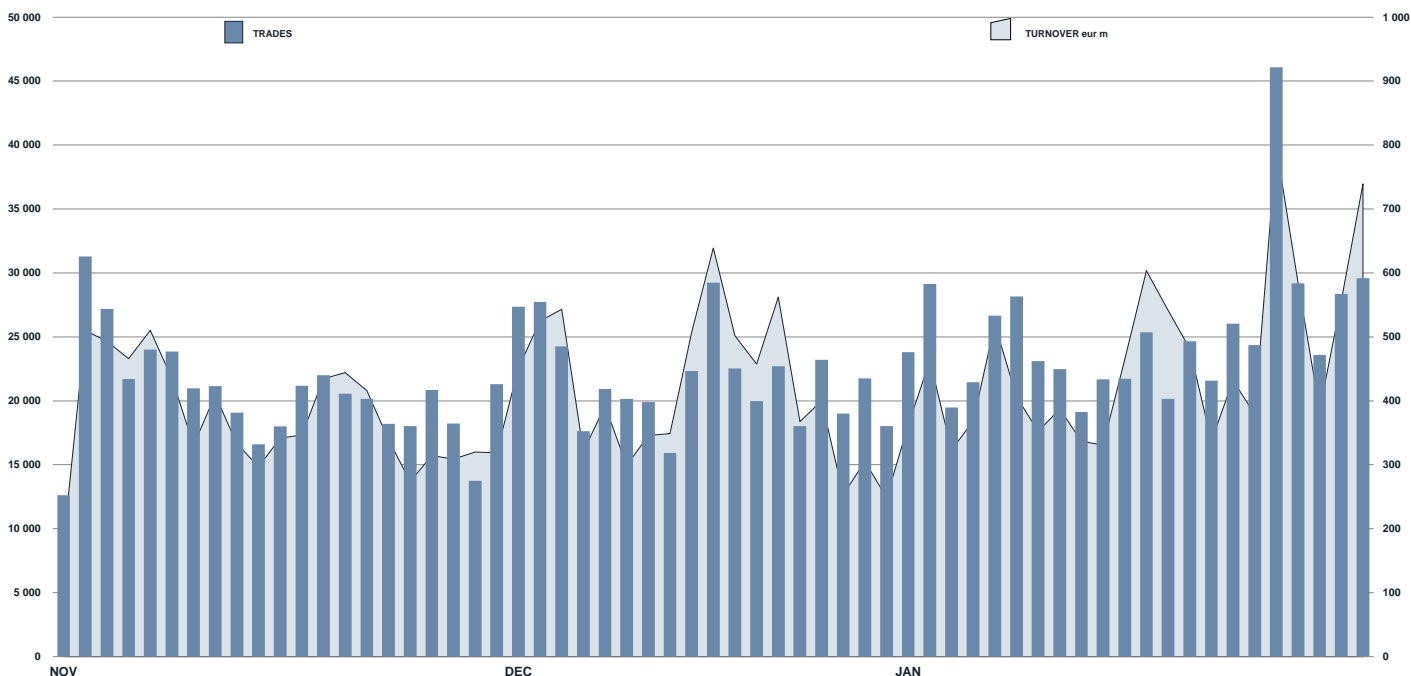




ETFPlus Statistics

January 2020

ETFPLUS DAILY TURNOVER



MAIN INDICATORS

LISTED INSTRUMENT

LISTED END OF MONTH	MONTH NEW LISTED	AUM in MT	
		eur m 30/12/2019	eur m 31/01/2020
ETF - DEVELOPED MARKET	278	7	29 917.88
ETF - CORPORATE AND GOV BOND	330	7	37 917.47
ETF - EMERGING MARKETS	104	1	5 226.83
ETF - STYLE	104	0	3 013.15
OTHERS	249	2	5 482.61
ETCRETN	218	0	6 700.37
<b>TOTAL</b>	<b>1 283</b>	<b>17</b>	<b>88 258.31</b>

TRADING

	NOVEMBER 2019		DECEMBER 2019		JANUARY 2020	
	Trades	Turnover eur m	Trades	Turnover eur m	Trades	Turnover eur m
.....	95 044	2 674.06	93 379	2 680.33	122 343	3 611.07
.....	77 989	2 134.97	71 353	1 854.33	93 408	2 483.91
.....	23 388	598.42	21 541	615.33	37 254	759.27
.....	14 603	210.26	13 340	217.46	18 959	301.93
.....	49 560	539.16	46 736	564.36	80 262	830.35
.....	170 135	1 664.76	144 315	1 536.51	203 493	2 167.05
<b>TOTAL</b>	<b>430 719</b>	<b>7 821.64</b>	<b>390 664</b>	<b>7 468.34</b>	<b>555 719</b>	<b>10 153.57</b>

MOST TRADED IN THE MONTH BY TRADES AND RELATIVE SPREAD

Name	Alphab.	ISIN	TRADES	SPREAD
			number	% TOT
1 WISDOMTREE WTI CRUDE OIL 3X DAILY LEV	3OIL	IE00B7ZQC614	26 140	4.7%
2 WISDOMTREE NATURAL GAS 3X DAILY LEV	3NGL	IE0088VCS061	19 984	3.6%
3 WISDOMTREE WTI CRUDE OIL 3X DAILY SHORT	3OIS	IE00B7SXY86	15 049	2.7%
4 WISDOMTREE PHYSICAL GOLD	PHAU	JE00B1V33770	12 146	2.2%
5 WISDOMTREE FTSE MIB 3X DAILY SHORT	3ITS	IE008873CW36	7 691	1.4%
6 ISHARES CORE MSCI WORLD UCITS ETF ACC	SWDA	IE00B4LSY983	7 491	1.3%
7 LYXOR FTSEMIB DAI -2X XBR UCITS ETF ACC	XBRMIB	FR0010446666	7 206	1.3%
8 ETFS GOLD BULLION SECURITIES	GBS	GB00B00FH282	5 305	1.0%
9 ISHARES GLOBAL CLEAN ENERGY UCITS ETF	INRG	IE00B1XNH3C4	4 952	0.9%
10 WISDOMTREE PHYSICAL PALLADIUM	PHPD	JE00B1V33002	4 919	0.9%

MOST TRADED IN THE MONTH BY TURNOVER AND RELATIVE SPREAD

Name	Alphab.	ISIN	TURNOVER	SPREAD
			eur m	% TOT
1 WISDOMTREE WTI CRUDE OIL 3X DAILY LEV	3OIL	IE00B7ZQC614	287	2.8%
2 WISDOMTREE PHYSICAL GOLD	PHAU	JE00B1V33770	189	1.9%
3 ISHARES CORE S&P 500 UCITS ETF USD ACC	CSSPX	IE00B58MR087	158	1.6%
4 INVESCO PHYSICAL GOLD ETC	SGLD	IE00B579F325	157	1.5%
5 WISDOMTREE WTI CRUDE OIL 3X DAILY SHORT	3OIS	IE00B7SXY86	156	1.5%
6 ISHARES CORE MSCI WORLD UCITS ETF ACC	SWDA	IE00B4LSY983	147	1.4%
7 ISHARES HIGH YLD CORP UCITS ETF DIST	IHYG	IE00B66F4759	106	1.0%
8 LYXOR FTSEMIB DAI -2X XBR UCITS ETF ACC	XBRMIB	FR0010446666	105	1.0%
9 AMUNDI MSCI EMERGING UCITS ETF - EUR	AEEM	LU1681045370	102	1.0%
10 XTRACKERS MSCI USA UCITS ETF	XDSU	IE00BJKDR000	99	1.0%

MOST TRADED IN THE YEAR BY TRADES AND RELATIVE SPREAD

Name	Alphab.	ISIN	TRADES	SPREAD
			number	% TOT
1 WISDOMTREE WTI CRUDE OIL 3X DAILY LEV	3OIL	IE00B7ZQC614	26 140	4.7%
2 WISDOMTREE NATURAL GAS 3X DAILY LEV	3NGL	IE0088VCS061	19 984	3.6%
3 WISDOMTREE WTI CRUDE OIL 3X DAILY SHORT	3OIS	IE00B7SXY86	15 049	2.7%
4 WISDOMTREE PHYSICAL GOLD	PHAU	JE00B1V33770	12 146	2.2%
5 WISDOMTREE FTSE MIB 3X DAILY SHORT	3ITS	IE008873CW36	7 691	1.4%
6 ISHARES CORE MSCI WORLD UCITS ETF ACC	SWDA	IE00B4LSY983	7 491	1.3%
7 LYXOR FTSEMIB DAI -2X XBR UCITS ETF ACC	XBRMIB	FR0010446666	7 206	1.3%
8 ETFS GOLD BULLION SECURITIES	GBS	GB00B00FH282	5 305	1.0%
9 ISHARES GLOBAL CLEAN ENERGY UCITS ETF	INRG	IE00B1XNH3C4	4 952	0.9%
10 WISDOMTREE PHYSICAL PALLADIUM	PHPD	JE00B1V33002	4 919	0.9%

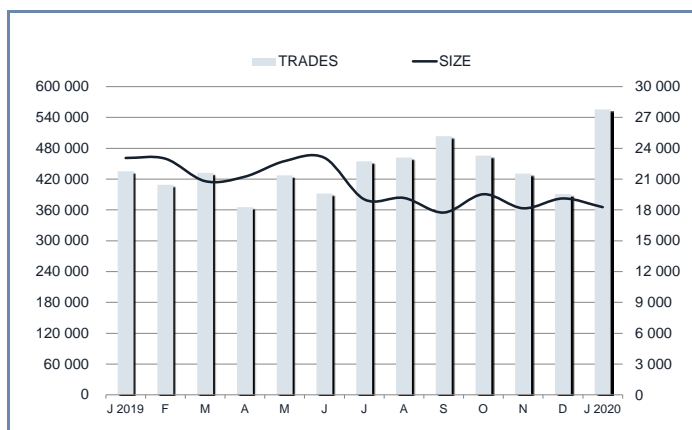
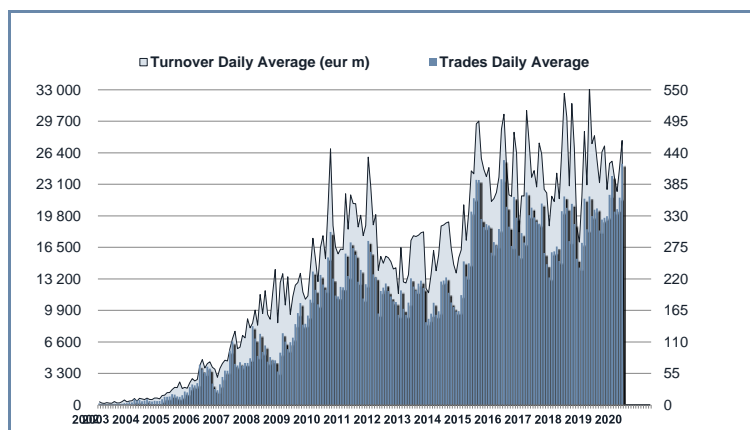
MOST TRADED IN THE YEAR BY TURNOVER AND RELATIVE SPREAD

Name	Alphab.	ISIN	TURNOVER	SPREAD
			eur m	% TOT
1 WISDOMTREE WTI CRUDE OIL 3X DAILY LEV	3OIL	IE00B7ZQC614	287	2.8%
2 WISDOMTREE PHYSICAL GOLD	PHAU	JE00B1V33770	189	1.9%
3 ISHARES CORE S&P 500 UCITS ETF USD ACC	CSSPX	IE00B58MR087	158	1.6%
4 INVESCO PHYSICAL GOLD ETC	SGLD	IE00B579F325	157	1.5%
5 WISDOMTREE WTI CRUDE OIL 3X DAILY SHORT	3OIS	IE00B7SXY86	156	1.5%
6 ISHARES CORE MSCI WORLD UCITS ETF ACC	SWDA	IE00B4LSY983	147	1.4%
7 ISHARES HIGH YLD CORP UCITS ETF DIST	IHYG	IE00B66F4759	106	1.0%
8 LYXOR FTSEMIB DAI -2X XBR UCITS ETF ACC	XBRMIB	FR0010446666	105	1.0%
9 AMUNDI MSCI EMERGING UCITS ETF - EUR	AEEM	LU1681045370	102	1.0%
10 XTRACKERS MSCI USA UCITS ETF	XDSU	IE00BJKDR000	99	1.0%

TRADING BY SIZE OF TURNOVER

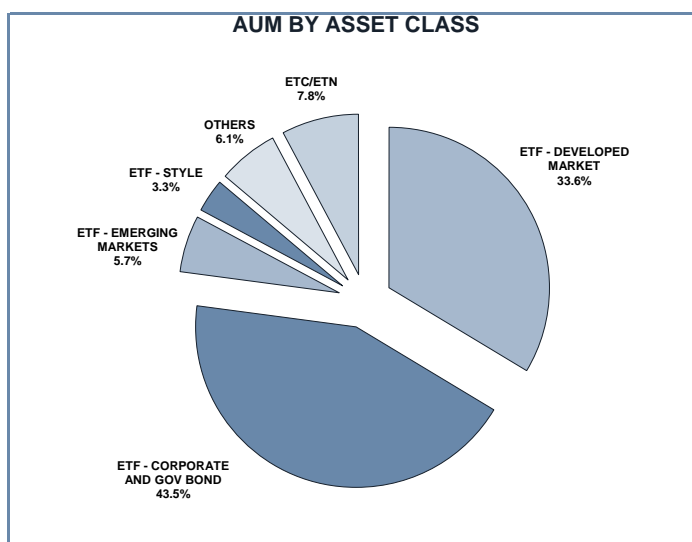
SIZE OF TURNOVER		NOVEMBER 2019		DECEMBER 2019		YEAR 2020			
		Trades	Turnover eur m	Trades	Turnover eur m	Trades	% TOT	Turnover eur m	% TOT
-	500	46 647	11.0	44 329	10.1	58 697	10.6%	13.8	0.1%
500	1 000	33 082	24.8	29 421	22.2	45 448	8.2%	34.2	0.3%
1 000	2 000	58 137	82.1	49 951	70.7	80 066	14.4%	113.5	1.1%
2 000	3 000	38 906	96.0	38 078	93.1	47 431	8.5%	117.1	1.2%
3 000	4 000	26 967	93.8	22 017	76.3	33 240	6.0%	115.7	1.1%
4 000	5 000	26 290	119.8	21 588	98.2	31 093	5.6%	141.0	1.4%
5 000	6 000	21 236	115.2	20 120	108.8	28 626	5.2%	155.3	1.5%
6 000	7 000	13 085	84.7	10 411	67.4	16 518	3.0%	107.3	1.1%
7 000	8 000	12 418	92.8	9 763	73.1	13 972	2.5%	104.9	1.0%
8 000	9 000	8 986	76.5	7 850	66.8	11 767	2.1%	99.9	1.0%
9 000	10 000	10 398	99.3	9 601	91.8	13 495	2.4%	129.0	1.3%
10 000	15 000	40 011	478.6	35 642	426.0	51 676	9.3%	618.9	6.1%
15 000	20 000	17 935	311.7	15 207	266.1	22 574	4.1%	389.3	3.8%
20 000	25 000	12 996	291.5	13 792	307.4	19 585	3.5%	430.7	4.2%
25 000	30 000	10 509	285.8	10 998	298.1	12 216	2.2%	334.2	3.3%
30 000	35 000	6 259	201.4	6 278	201.5	8 339	1.5%	268.2	2.6%
35 000	40 000	5 255	197.0	4 571	171.0	6 578	1.2%	246.7	2.4%
40 000	45 000	4 294	180.8	4 041	170.6	5 566	1.0%	235.5	2.3%
45 000	50 000	4 707	225.1	4 053	193.7	5 180	0.9%	247.8	2.4%
50 000	75 000	13 556	820.8	14 118	845.4	20 221	3.6%	1 202.9	11.8%
75 000	100 000	6 383	554.0	6 874	596.6	9 067	1.6%	787.4	7.8%
100 000	125 000	3 557	390.6	3 661	402.3	4 277	0.8%	471.6	4.6%
125 000	150 000	2 249	308.9	1 852	252.8	2 193	0.4%	300.6	3.0%
150 000		6 856	2 679.6	6 448	2 558.5	7 894	1.4%	3 488.1	34.4%
<b>TOTAL</b>		<b>430 719</b>	<b>7 821.6</b>	<b>390 664</b>	<b>7 468.3</b>	<b>555 719</b>		<b>10 153.6</b>	

TRADING EVOLUTION



FOCUS

MONTH	INSTRUMENT WITH HIGHEST TURNOVER		INSTRUMENT WITH HIGHEST TRADES NUMBER	
	ALPHA CODE	EUR	ALPHA CODE	NUMBER
JANUARY 2019	IUSE	409 453 929	3OIL	22 548
FEBRUARY	IUSE	298 479 507	3OIL	21 292
MARCH	3OIL	190 451 024	3OIL	23 128
APRIL	EMUEUA	229 989 636	3OIL	16 137
MAY	CSSPX	249 469 851	3OIL	20 101
JUNE	IWDE	190 059 082	3OIL	20 721
JULY	ACWIE	207 360 236	3OIL	19 021
AUGUST	CSSPX	196 911 706	3OIL	26 456
SEPTEMBER	3OIL	268 654 173	3OIL	34 093
OCTOBER	3OIL	258 487 586	3OIL	29 619
NOVEMBER	3OIS	229 243 385	3NGL	24 141
DECEMBER	3OIL	272 626 134	3NGL	18 947
JANUARY 2020	3OIL	287 407 232	3OIL	26 140



## SPREAD

	SPREAD							
	BBO		5 000 €		15 000 €		25 000 €	
	SPREAD	% OBSER	SPREAD	% OBSER	SPREAD	% OBSER	SPREAD	% OBSER
<b>ETF - DEVELOPED MARKET</b>	<b>0.08%</b>	<b>99.63%</b>	<b>0.08%</b>	<b>99.64%</b>	<b>0.09%</b>	<b>99.63%</b>	<b>0.09%</b>	<b>99.63%</b>
EQUITY ITALY	0.11%	99.60%	0.11%	99.63%	0.11%	99.63%	0.12%	99.64%
EQUITY EUROPE - REGIONAL	0.07%	99.76%	0.08%	99.76%	0.08%	99.76%	0.08%	99.76%
EQUITY EUROPE - SINGLE COUNTRY	0.10%	99.69%	0.10%	99.70%	0.10%	99.71%	0.10%	99.65%
EQUITY WORLD	0.08%	99.44%	0.08%	99.44%	0.09%	99.43%	0.09%	99.42%
EQUITY NORTH AMERICA	0.07%	99.59%	0.07%	99.59%	0.07%	99.59%	0.07%	99.59%
EQUITY PACIFIC	0.11%	99.83%	0.13%	99.83%	0.14%	99.83%	0.14%	99.82%
EQUITY SHORT (DEVELOPED)	0.07%	99.73%	0.07%	99.73%	0.07%	99.73%	0.07%	99.73%
BUYWRITE - COVERED CALL	0.00%	0.00%	0.00%	0.00%	0.00%	0.00%	0.00%	0.00%
LEVERAGED LONG	0.08%	99.36%	0.08%	99.36%	0.08%	99.36%	0.08%	99.36%
LEVERAGED SHORT	0.09%	99.32%	0.09%	99.33%	0.09%	99.32%	0.09%	99.32%
PROTECTIVE PUT	0.00%	0.00%	0.00%	0.00%	0.00%	0.00%	0.00%	0.00%
<b>ETF - EMERGING MARKETS</b>	<b>0.16%</b>	<b>99.54%</b>	<b>0.16%</b>	<b>99.54%</b>	<b>0.17%</b>	<b>99.54%</b>	<b>0.17%</b>	<b>99.52%</b>
EQUITY EMERGING - AFRICA/MIDDLE EAST	0.44%	99.88%	0.47%	99.88%	0.50%	99.72%	0.51%	99.32%
EQUITY EMERGING - ASIA	0.20%	99.60%	0.20%	99.60%	0.21%	99.60%	0.21%	99.57%
EQUITY EMERGING - CENTRE/SOUTH AMERICA	0.42%	99.83%	0.44%	99.83%	0.46%	99.82%	0.47%	99.81%
EQUITY EMERGING - EAST EUROPE	0.24%	99.66%	0.26%	99.66%	0.27%	99.66%	0.28%	99.66%
EQUITY EMERGING - WORLD	0.11%	99.48%	0.11%	99.48%	0.11%	99.48%	0.12%	99.47%
EQUITY SHORT (EMERGING)	0.00%	0.00%	0.00%	0.00%	0.00%	0.00%	0.00%	0.00%
<b>ETF - CORPORATE GOVERNMENT BONDS</b>	<b>0.10%</b>	<b>99.79%</b>	<b>0.10%</b>	<b>99.79%</b>	<b>0.11%</b>	<b>99.79%</b>	<b>0.11%</b>	<b>99.77%</b>
INFLATION	0.13%	99.89%	0.13%	99.89%	0.13%	99.89%	0.14%	99.87%
LIQUIDITY	0.03%	99.94%	0.03%	99.94%	0.03%	99.94%	0.03%	99.94%
CORPORATE BOND - EURO	0.07%	99.80%	0.07%	99.81%	0.08%	99.81%	0.08%	99.81%
CORPORATE BOND - EX EURO	0.18%	99.89%	0.19%	99.90%	0.19%	99.89%	0.19%	99.85%
CORPORATE BOND - EMERGING	0.15%	100.00%	0.16%	100.00%	0.17%	100.00%	0.17%	100.00%
CORPORATE BOND - WORLD	0.14%	99.64%	0.15%	99.67%	0.15%	99.67%	0.16%	99.66%
CORPORATE BOND - HIGH YIELD	0.10%	99.64%	0.10%	99.65%	0.11%	99.65%	0.11%	99.53%
AGGREGATE BOND	0.16%	99.82%	0.16%	99.82%	0.16%	99.82%	0.17%	99.81%
BOND SHORT	0.09%	99.99%	0.09%	99.99%	0.09%	99.99%	0.10%	99.99%
BOND LEVERAGED LONG	0.12%	99.96%	0.12%	99.96%	0.12%	99.96%	0.12%	99.96%
BOND LEVERAGED SHORT	0.09%	99.74%	0.09%	99.74%	0.10%	99.74%	0.10%	99.74%
GOVERNMENT BONDS - EMERGING	0.14%	99.68%	0.15%	99.69%	0.16%	99.69%	0.16%	99.68%
GOVERNMENT BONDS - EURO	0.06%	99.86%	0.06%	99.86%	0.06%	99.85%	0.06%	99.85%
GOVERNMENT BONDS - ITALY	0.07%	99.95%	0.07%	99.96%	0.07%	99.96%	0.08%	99.96%
GOVERNMENT BONDS - WORLD	0.12%	99.93%	0.12%	99.92%	0.13%	99.92%	0.13%	99.90%
GOVERNMENT BONDS - EX EURO	0.11%	99.76%	0.11%	99.77%	0.11%	99.76%	0.12%	99.75%
<b>ETF - STYLE</b>	<b>0.17%</b>	<b>99.82%</b>	<b>0.18%</b>	<b>99.81%</b>	<b>0.19%</b>	<b>99.79%</b>	<b>0.19%</b>	<b>99.77%</b>
EQUITY STYLE (DEVELOPED)	0.17%	99.82%	0.18%	99.81%	0.18%	99.79%	0.19%	99.77%
EQUITY STYLE (EMERGING)	0.34%	99.91%	0.34%	99.87%	0.35%	99.77%	0.35%	99.65%
<b>ETF - OTHERS</b>	<b>0.19%</b>	<b>99.75%</b>	<b>0.20%</b>	<b>99.75%</b>	<b>0.21%</b>	<b>99.67%</b>	<b>0.22%</b>	<b>99.50%</b>
EQUITY SECTORS (DEVELOPED)	0.20%	99.87%	0.20%	99.86%	0.21%	99.83%	0.22%	99.78%
EQUITY SECTORS (EMERGING)	0.00%	0.00%	0.00%	0.00%	0.00%	0.00%	0.00%	0.00%
EQUITY THEMATIC	0.18%	99.63%	0.19%	99.62%	0.21%	99.51%	0.22%	99.20%
COMMODITIES	0.24%	99.90%	0.25%	99.90%	0.26%	99.89%	0.27%	99.88%
CREDIT INDICES	0.20%	99.98%	0.21%	99.97%	0.22%	99.97%	0.22%	99.97%
REAL ESTATE	0.14%	99.87%	0.16%	99.86%	0.18%	99.77%	0.18%	99.72%
LEVERAGED CREDIT INDICES	0.00%	0.00%	0.00%	0.00%	0.00%	0.00%	0.00%	0.00%
VOLATILITY INDICES	0.20%	99.45%	0.21%	99.45%	0.23%	99.36%	0.23%	99.12%
CURRENCIES INDICES	0.00%	0.00%	0.00%	0.00%	0.00%	0.00%	0.00%	0.00%
FLEXIBLE	0.26%	99.96%	0.28%	99.95%	0.30%	99.73%	0.30%	99.37%
MULTI ASSET	0.46%	100.00%	0.42%	97.90%	0.41%	97.76%	0.38%	95.97%
<b>ETF</b>	<b>0.10%</b>	<b>99.71%</b>	<b>0.11%</b>	<b>99.72%</b>	<b>0.11%</b>	<b>99.71%</b>	<b>0.11%</b>	<b>99.68%</b>

Data obtained from 1 minute snapshots of the trading book (5 levels) during trading days of the relevant month.

Market Spread: means the difference between bid and ask prices divided by the mid quote at which it was possible to buy and sell simultaneously the relevant amount.

% Obser: means the percentage of observations at which it would be possible to buy and sell simultaneously the relevant amount.

The average showed is the weighted average on AUM deposited in Monte Titoli is used: it's the average calculated taking into account the AUM (asset under management) deposited in Monte Titoli.

## News

ETFplus AUM reached the new historical record of €89.89bn (+27.40% vs January 2019).

## New instruments listed in January:

- LYXOR MSCI WORLD UCITS ETF EUR HDG DIST - FR0011660927	- VANGUARD USD CORPORATE 1-3 Y UCITS ETF A - IE00BGYYW506	- VANGUARD FTSE DEVELOP WORLD UCITS ETF A - IE00K5BQV03
- UBS MSCI ACWI SOCIAL RES UCITS ETF USD A - IE00BOR55471	- VANGUARD USD CORPORATE BOND UCITS ETF A - IE00BGYYFK97	- VANGUARD FTSE EMERG MARKETS UCITS ETF A - IE00K5BR733
- VANGUARD S&P 500 UCITS ETF ACC - IE00BFMXXD54	- VANGUARD EUR CORPORATE BOND UCITS ETF A - IE00BGYYT403	- VANGUARD GLOB AGGREGATE BOND UCITS ETF A - IE00K5G4TKH54
- VANGUARD EUROZONE GOVERNMENT UCITS ETF A - IE00BH04GL39	- VANGUARD USD EMERGING GOVERN UCITS ETF A - IE00BGYYWC81	- VANGUARD USD TREASURY BOND UCITS ETF A - IE00BGYYWFS83
	- VANGUARD FTSE ALL-WORLD UCITS ETF A - IE00K5BQT80	- VANGUARD FTSE DEV EUROPE EXUK UCITS ETF A - IE00K5BQVY34
	- VANGUARD FTSE DEVELOP EUROPE UCITS ETF A - IE00K5BQX27	- L&G US EQUITY RESPONSIBLE EXCL UCITS ETF - IE00K5LWY790
	- VANGUARD FTSE JAPAN UCITS ETF A - IE00BFMXXY26	