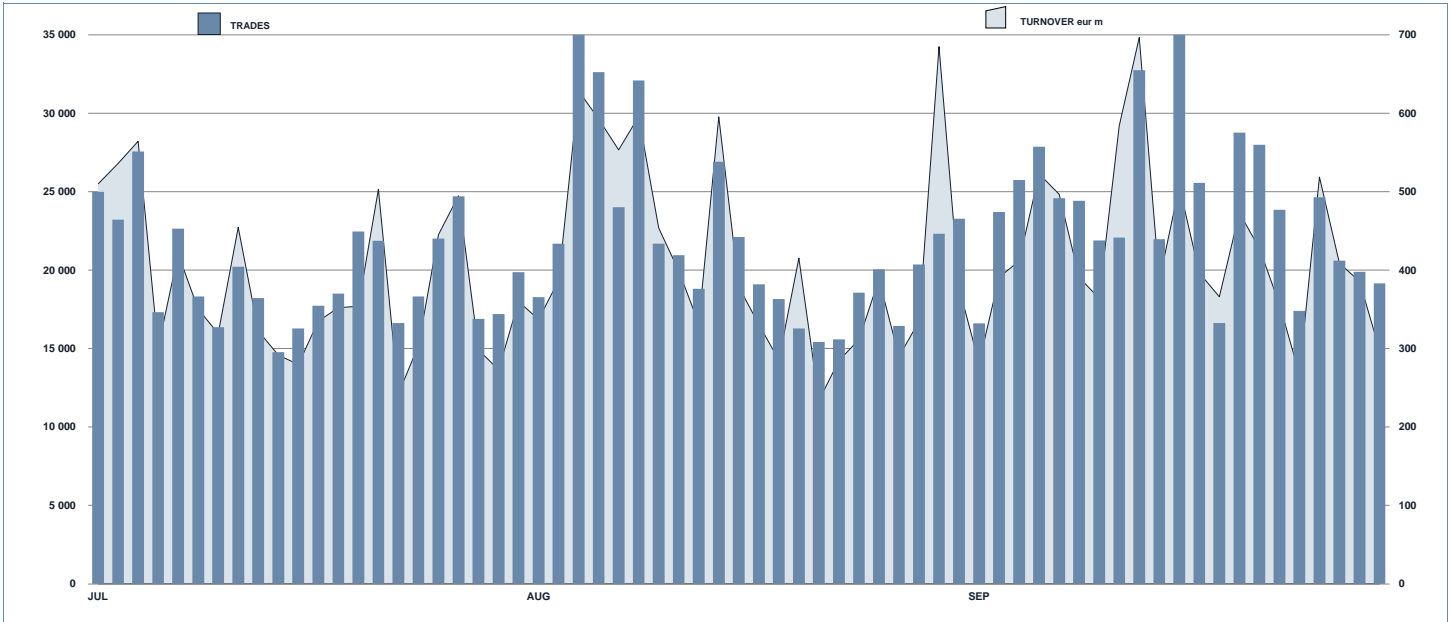




ETFPlus Statistics

September 2019

ETFPLUS DAILY TURNOVER



MAIN INDICATORS

	LISTED INSTRUMENT				TRADING					
	LISTED	MONTH	AUM in MT		AUGUST 2019		SEPTEMBER 2019		JAN - SEP 2019	
	END OF MONTH	NEW LISTED	eur m	eur m	Trades	Turnover	Trades	Turnover	Trades	Turnover
ETF - DEVELOPED MARKET	269	0	25 788.25	27 739.29	109 713	3 603.80	90 657	2 882.53	930 473	31 029.99
ETF - CORPORATE AND GOV BOND	319	10	34 814.93	35 797.87	69 466	2 001.89	101 708	2 636.98	739 292	23 635.75
ETF - EMERGING MARKETS	103	3	4 368.14	4 378.28	22 665	575.10	22 135	438.97	234 907	5 384.92
ETF - STYLE	103	0	2 499.68	2 574.58	10 560	144.46	11 501	195.49	96 412	1 676.30
OTHERS	236	7	4 350.59	4 455.68	40 503	538.60	49 723	616.53	359 498	4 966.83
ETC/ETN	218	0	6 446.44	6 195.93	208 995	1 989.84	227 649	2 161.63	1 519 389	14 677.83
TOTAL	1 248	20	78 268.03	81 141.63	461 902	8 853.69	503 373	8 932.12	3 879 971	81 371.62
						764.12		891.67		8 252.31

MOST TRADED IN THE MONTH BY TRADES AND RELATIVE SPREAD

Name	Alphab.	ISIN	TRADES	SPREAD	25 000 €	
			number	% TOT	BBO	
1 WISDOMTREE WTI CRUDE OIL 3X DAILY LEV	SOIL	IE00B7ZQC614	34 093	6.8%	0.15%	0.18%
2 WISDOMTREE WTI CRUDE OIL 3X DAILY SHORT	SOIS	IE00B7SX5Y86	27 630	5.5%	0.15%	0.21%
3 WISDOMTREE NATURAL GAS 3X DAILY LEV	3NGL	IE00B8VC8061	15 281	3.0%	0.36%	0.54%
4 WISDOMTREE PHYSICAL GOLD	PHAU	JE00B1Y3S370	8 051	1.6%	0.03%	0.03%
5 WISDOMTREE NATURAL GAS 3X DAILY SHORT	3NGS	IE00B76BRD76	6 543	1.3%	0.40%	0.51%
6 ISHARES HIGH YLD CORP UCITS ETF DIST	IHYG	IE00B66F4759	5 801	1.2%	0.05%	0.06%
7 WISDOMTREE COFFEE 3X DAILY LEVERAGED	3CFL	JE00BYQY3Z98	5 496	1.1%	0.52%	0.74%
8 LYXOR FTSEMIB DAI -2X XBR UCITS ETF ACC	VIXL	IE00BYTHQ258	5 113	1.0%	0.94%	1.28%
9 WISDOMTREE PHYSICAL SILVER	PHAG	JE00B1Y3S333	4 388	0.9%	0.11%	0.15%
10 LYXOR FTSEMIB DAI -2X XBR UCITS ETF ACC	XBRMB	FR0010446666	4 244	0.8%	0.09%	0.10%

MOST TRADED IN THE MONTH BY TURNOVER AND RELATIVE SPREAD

Name	Alphab.	ISIN	TURNOVER	SPREAD	25 000 €	
			eur m	% TOT	BBO	
1 WISDOMTREE WTI CRUDE OIL 3X DAILY LEV	SOIL	IE00B7ZQC614	269	3.0%	0.15%	0.18%
2 WISDOMTREE WTI CRUDE OIL 3X DAILY SHORT	SOIS	IE00B7SX5Y86	213	2.4%	0.15%	0.21%
3 WISDOMTREE PHYSICAL GOLD	PHAU	JE00B1Y3S370	143	1.6%	0.03%	0.03%
4 UBS MSCI ACWI SF UCITS ETF EUR HEDG ACC	ACWIE	IE00BYM11K57	126	1.4%	0.13%	0.14%
5 ISHARES CORE EURO STOXX 50 (DIST) UCITS ETF	EUE	IE00B8471009	125	1.4%	0.05%	0.05%
6 LYXOR EURO OVERNIGHT RETURN UCITS ETF	LEONIA	FR0010510800	115	1.3%	0.07%	0.07%
7 ISHARES CORE MSCI WORLD UCITS ETF ACC	SWDA	IE00B4LY9883	110	1.2%	0.05%	0.05%
8 ISHARES CORE S&P 500 UCITS ETF USD ACC	CSSPX	IE00B5BMR087	102	1.1%	0.03%	0.04%
9 WISDOMTREE NATURAL GAS 3X DAILY LEV	3NGL	IE00B8VC8061	85	0.9%	0.36%	0.54%
10 ISHARES HIGH YLD CORP UCITS ETF DIST	IHYG	IE00B66F4759	84	0.9%	0.05%	0.06%

MOST TRADED IN THE YEAR BY TRADES AND RELATIVE SPREAD

Name	Alphab.	ISIN	TRADES	SPREAD	25 000 €	
			number	% TOT	BBO	
1 WISDOMTREE WTI CRUDE OIL 3X DAILY LEV	SOIL	IE00B7ZQC614	203 497	5.2%	0.14%	0.18%
2 WISDOMTREE WTI CRUDE OIL 3X DAILY SHORT	SOIS	IE00B7SX5Y86	121 241	3.1%	0.15%	0.22%
3 WISDOMTREE NATURAL GAS 3X DAILY LEV	3NGL	IE00B8VC8061	99 595	2.6%	0.36%	0.54%
4 LYXOR FTSEMIB DAI -2X XBR UCITS ETF ACC	XBRMB	FR0010446666	57 181	1.5%	0.09%	0.10%
5 WISDOMTREE NATURAL GAS 3X DAILY SHORT	3NGS	IE00B76BRD76	51 866	1.3%	0.41%	0.51%
6 WISDOMTREE PHYSICAL GOLD	PHAU	JE00B1Y3S370	48 002	1.2%	0.03%	0.04%
7 WISDOMTREE COFFEE 3X DAILY LEVERAGED	3CFL	JE00BYQY3Z98	43 277	1.1%	0.54%	0.85%
8 WISDOMTREE S&P 500 VIX 2.25X DAILY LEV	VIXL	IE00BYTHQ258	40 718	1.0%	0.80%	1.10%
9 ETFS 3X DAILY SHORT FTSE MIB	IT3S	IE00B88R0714	37 288	1.0%	0.16%	0.17%
10 WISDOMTREE FTSE MIB 3X DAILY SHORT	3ITS	IE00B873CV36	37 000	1.0%	0.13%	0.15%

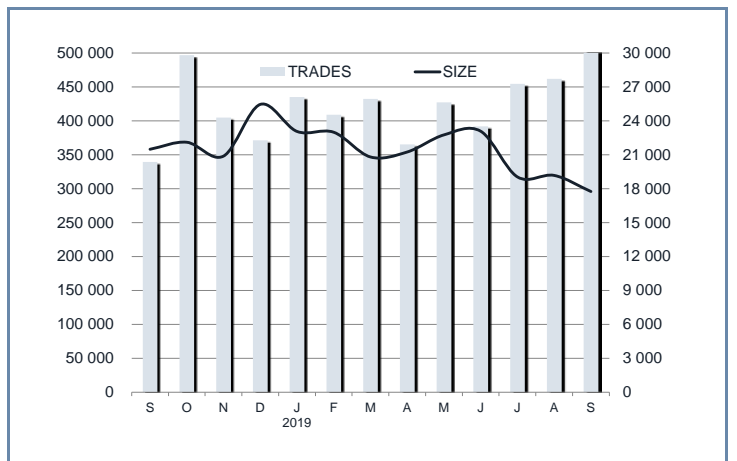
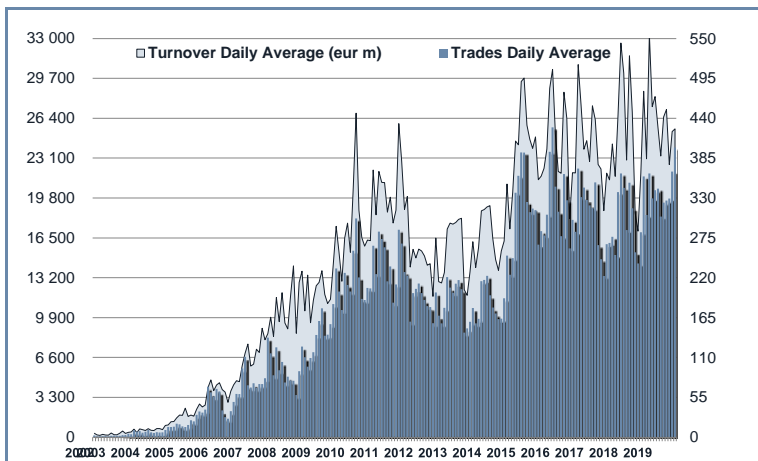
MOST TRADED IN THE YEAR BY TURNOVER AND RELATIVE SPREAD

Name	Alphab.	ISIN	TURNOVER	SPREAD	25 000 €	
			eur m	% TOT	BBO	
1 WISDOMTREE WTI CRUDE OIL 3X DAILY LEV	SOIL	IE00B7ZQC614	1 612	2.0%	0.14%	0.18%
2 ISHARES S&P 500 EUR HEDGED UCITS ETF ACC	IUSE	IE00B3ZWK18	1 586	1.9%	0.05%	0.06%
3 ISHARES CORE S&P 500 UCITS ETF USD ACC	CSSPX	IE00B5BMR087	1 541	1.9%	0.03%	0.04%
4 ISHARES CORE EURO STOXX 50 (DIST) UCITS ETF	EUE	IE00B8471009	1 468	1.8%	0.04%	0.04%
5 UBS MSCI ACWI SF UCITS ETF EUR HEDG ACC	ACWIE	IE00BYM11K57	1 239	1.5%	0.13%	0.13%
6 LYXOR EURO OVERNIGHT RETURN UCITS ETF	LEONIA	FR0010510800	1 228	1.5%	0.07%	0.07%
7 ISHARES MSCI WORLD EUR HEDG UCITS ETF ACC	IWDE	IE00B4410979	1 107	1.4%	0.06%	0.06%
8 ISHARES CORE MSCI WORLD UCITS ETF ACC	SWDA	IE00B4LY9883	1 064	1.3%	0.05%	0.06%
9 ISHARES CORE MSCI EM IMI UCITS ETF ACC	EMMI	IE00B8K4G266	991	1.2%	0.05%	0.05%
10 WISDOMTREE PHYSICAL GOLD	PHAU	JE00B1Y3S370	970	1.2%	0.03%	0.04%

TRADING BY SIZE OF TURNOVER

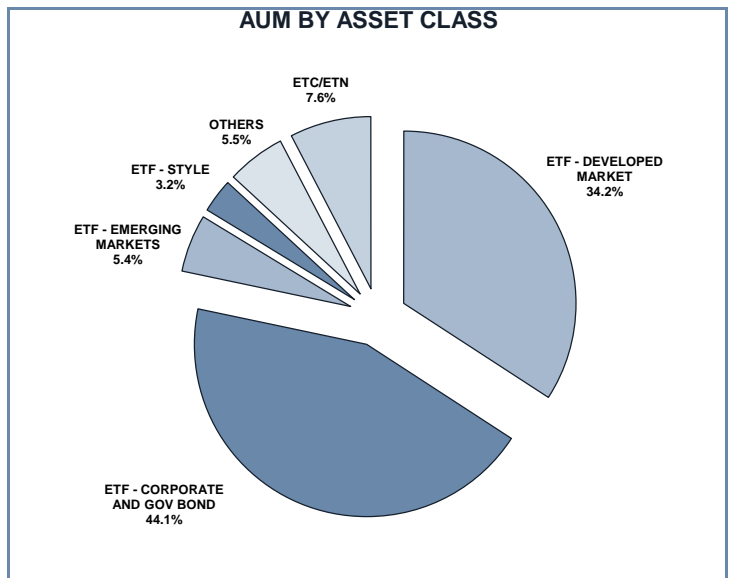
SIZE OF TURNOVER		AUGUST 2019		SEPTEMBER 2019		YEAR 2019			
		Trades	Turnover eur m	Trades	Turnover eur m	Trades	% TOT	Turnover eur m	% TOT
-	500	51 885	11.5	60 505	14.1	420 157	10.8%	94.8	0.1%
500	1 000	37 831	28.3	41 165	30.1	301 254	7.8%	225.6	0.3%
1 000	2 000	56 162	80.9	66 802	94.8	447 760	11.5%	650.2	0.8%
2 000	3 000	40 555	99.8	45 800	114.0	339 242	8.7%	839.0	1.0%
3 000	4 000	27 856	96.3	29 373	101.9	242 911	6.3%	845.2	1.0%
4 000	5 000	26 960	122.3	30 329	137.8	239 728	6.2%	1 080.8	1.3%
5 000	6 000	24 339	131.7	27 863	151.9	191 820	4.9%	1 041.5	1.3%
6 000	7 000	14 873	96.1	14 969	97.0	121 391	3.1%	785.4	1.0%
7 000	8 000	10 287	77.0	13 276	99.5	106 870	2.8%	800.5	1.0%
8 000	9 000	10 850	92.0	12 113	102.9	97 161	2.5%	826.0	1.0%
9 000	10 000	13 188	126.2	13 349	127.5	103 921	2.7%	993.4	1.2%
10 000	15 000	37 724	445.9	46 458	547.9	327 356	8.4%	3 905.9	4.8%
15 000	20 000	18 082	314.6	19 550	339.4	177 863	4.6%	3 113.1	3.8%
20 000	25 000	15 143	338.7	14 077	316.7	132 956	3.4%	2 966.2	3.6%
25 000	30 000	11 649	314.4	11 033	298.7	94 294	2.4%	2 565.6	3.2%
30 000	35 000	11 048	357.2	8 426	272.9	73 335	1.9%	2 367.4	2.9%
35 000	40 000	6 752	252.1	5 817	218.6	50 329	1.3%	1 885.0	2.3%
40 000	45 000	4 233	179.6	3 901	165.2	38 435	1.0%	1 631.9	2.0%
45 000	50 000	5 141	246.1	4 614	221.1	41 965	1.1%	2 007.2	2.5%
50 000	75 000	15 379	912.8	14 130	839.2	131 205	3.4%	7 816.9	9.6%
75 000	100 000	7 177	624.5	6 908	601.1	66 620	1.7%	5 817.6	7.1%
100 000	125 000	5 151	568.8	4 159	461.2	40 811	1.1%	4 517.1	5.6%
125 000	150 000	2 486	339.9	1 850	253.8	20 977	0.5%	2 867.1	3.5%
150 000		7 151	2 997.1	6 906	3 324.9	71 610	1.8%	31 728.2	39.0%
TOTAL		461 902	8 853.7	503 373	8 932.1	3 879 971		81 371.6	

TRADING EVOLUTION



FOCUS

MONTH	INSTRUMENT WITH HIGHEST TURNOVER		INSTRUMENT WITH HIGHEST TRADES NUMBER	
	ALPHA CODE	EUR	ALPHA CODE	NUMBER
SEPTEMBER	ETFMIB	269 045 407	3OIS	11 850
OCTOBER	CSSPX	316 822 783	XBRMIB	18 966
NOVEMBER	CSSPX	212 701 817	3OIL	27 623
DECEMBER	IUSE	631 870 772	3OIL	25 847
JANUARY	IUSE	409 453 929	3OIL	22 548
FEBRUARY	IUSE	298 479 507	3OIL	21 292
MARCH	3OIL	190 451 024	3OIL	23 128
APRIL	EMUEUA	229 989 636	3OIL	16 137
MAY	CSSPX	249 469 851	3OIL	20 101
JUNE	IWDE	190 059 082	3OIL	20 721
JULY	ACWIE	207 360 236	3OIL	19 021
AUGUST	CSSPX	196 911 706	3OIL	26 456
SEPTEMBER	3OIL	268 654 173	3OIL	34 093



SPREAD

	SPREAD							
	BBO		5 000 €		15 000 €		25 000 €	
	SPREAD	% OBSER	SPREAD	% OBSER	SPREAD	% OBSER	SPREAD	% OBSER
ETF - DEVELOPED MARKET	0.07%	99.72%	0.08%	99.72%	0.08%	99.71%	0.08%	99.70%
EQUITY ITALY	0.11%	99.64%	0.12%	99.65%	0.12%	99.65%	0.12%	99.56%
EQUITY EUROPE - REGIONAL	0.06%	99.86%	0.07%	99.86%	0.07%	99.85%	0.07%	99.85%
EQUITY EUROPE - SINGLE COUNTRY	0.10%	99.82%	0.11%	99.83%	0.11%	99.82%	0.11%	99.81%
EQUITY WORLD	0.07%	99.55%	0.08%	99.55%	0.08%	99.51%	0.08%	99.49%
EQUITY NORTH AMERICA	0.06%	99.67%	0.06%	99.67%	0.06%	99.67%	0.07%	99.67%
EQUITY PACIFIC	0.12%	99.85%	0.13%	99.85%	0.13%	99.82%	0.14%	99.81%
EQUITY SHORT (DEVELOPED)	0.07%	99.80%	0.08%	99.81%	0.08%	99.80%	0.08%	99.80%
BUYWRITE - COVERED CALL	0.00%	0.00%	0.00%	0.00%	0.00%	0.00%	0.00%	0.00%
LEVERAGED LONG	0.09%	99.54%	0.09%	99.54%	0.10%	99.54%	0.10%	99.54%
LEVERAGED SHORT	0.10%	99.49%	0.10%	99.50%	0.10%	99.51%	0.11%	99.51%
PROTECTIVE PUT	0.00%	0.00%	0.00%	0.00%	0.00%	0.00%	0.00%	0.00%
ETF - EMERGING MARKETS	0.16%	99.70%	0.16%	99.70%	0.17%	99.69%	0.17%	99.68%
EQUITY EMERGING - AFRICA/MIDDLE EAST	0.51%	99.93%	0.54%	99.93%	0.55%	99.78%	0.56%	99.70%
EQUITY EMERGING - ASIA	0.20%	99.81%	0.21%	99.81%	0.21%	99.81%	0.22%	99.80%
EQUITY EMERGING - CENTRE/SOUTH AMERICA	0.44%	99.87%	0.45%	99.87%	0.46%	99.87%	0.46%	99.76%
EQUITY EMERGING - EAST EUROPE	0.27%	99.74%	0.28%	99.74%	0.28%	99.74%	0.29%	99.74%
EQUITY EMERGING - WORLD	0.10%	99.61%	0.10%	99.61%	0.10%	99.61%	0.10%	99.61%
EQUITY SHORT (EMERGING)	0.00%	0.00%	0.00%	0.00%	0.00%	0.00%	0.00%	0.00%
ETF - CORPORATE GOVERNMENT BONDS	0.11%	99.84%	0.11%	99.85%	0.11%	99.83%	0.12%	99.80%
INFLATION	0.13%	99.90%	0.13%	99.88%	0.14%	99.86%	0.14%	99.85%
LIQUIDITY	0.03%	99.98%	0.03%	99.98%	0.03%	99.98%	0.03%	99.98%
CORPORATE BOND - EURO	0.08%	99.89%	0.08%	99.89%	0.08%	99.90%	0.08%	99.89%
CORPORATE BOND - EX EURO	0.17%	99.93%	0.17%	99.92%	0.18%	99.90%	0.18%	99.90%
CORPORATE BOND - EMERGING	0.20%	99.96%	0.21%	99.96%	0.23%	99.96%	0.24%	99.96%
CORPORATE BOND - WORLD	0.14%	99.63%	0.15%	99.64%	0.15%	99.64%	0.15%	99.64%
CORPORATE BOND - HIGH YIELD	0.10%	99.66%	0.10%	99.66%	0.11%	99.59%	0.11%	99.48%
AGGREGATE BOND	0.13%	99.83%	0.13%	99.82%	0.14%	99.79%	0.14%	99.78%
BOND SHORT	0.09%	99.99%	0.09%	99.99%	0.09%	99.98%	0.09%	99.98%
BOND LEVERAGED LONG	0.13%	99.96%	0.13%	99.93%	0.13%	99.93%	0.13%	99.93%
BOND LEVERAGED SHORT	0.10%	99.77%	0.10%	99.77%	0.10%	99.77%	0.10%	99.77%
GOVERNMENT BONDS - EMERGING	0.18%	99.75%	0.19%	99.77%	0.20%	99.77%	0.20%	99.68%
GOVERNMENT BONDS - EURO	0.07%	99.92%	0.07%	99.92%	0.07%	99.91%	0.07%	99.91%
GOVERNMENT BONDS - ITALY	0.09%	99.96%	0.09%	99.96%	0.09%	99.96%	0.09%	99.96%
GOVERNMENT BONDS - WORLD	0.13%	99.94%	0.13%	99.93%	0.13%	99.93%	0.14%	99.92%
GOVERNMENT BONDS - EX EURO	0.10%	99.84%	0.10%	99.84%	0.11%	99.84%	0.11%	99.83%
ETF - STYLE	0.17%	99.88%	0.17%	99.88%	0.18%	99.80%	0.18%	99.73%
EQUITY STYLE (DEVELOPED)	0.16%	99.88%	0.17%	99.88%	0.18%	99.80%	0.18%	99.74%
EQUITY STYLE (EMERGING)	0.38%	99.99%	0.39%	99.91%	0.46%	99.50%	0.49%	99.18%
ETF - OTHERS	0.20%	99.84%	0.21%	99.82%	0.23%	99.66%	0.24%	99.47%
EQUITY SECTORS (DEVELOPED)	0.19%	99.92%	0.20%	99.92%	0.21%	99.92%	0.21%	99.91%
EQUITY SECTORS (EMERGING)	0.00%	0.00%	0.00%	0.00%	0.00%	0.00%	0.00%	0.00%
EQUITY THEMATIC	0.20%	99.73%	0.22%	99.69%	0.25%	99.42%	0.27%	99.15%
COMMODITIES	0.22%	99.94%	0.22%	99.95%	0.23%	99.90%	0.24%	99.87%
CREDIT INDICES	0.29%	100.00%	0.29%	100.00%	0.31%	100.00%	0.31%	100.00%
REAL ESTATE	0.14%	99.87%	0.17%	99.87%	0.19%	99.64%	0.19%	99.11%
LEVERAGED CREDIT INDICES	0.00%	0.00%	0.00%	0.00%	0.00%	0.00%	0.00%	0.00%
VOLATILITY INDICES	0.23%	99.69%	0.24%	99.71%	0.25%	99.61%	0.26%	99.36%
CURRENCIES INDICES	0.00%	0.00%	0.00%	0.00%	0.00%	0.00%	0.00%	0.00%
FLEXIBLE	0.28%	99.99%	0.29%	99.98%	0.30%	99.93%	0.30%	99.91%
MULTI ASSET	0.44%	100.00%	0.44%	100.00%	0.44%	100.00%	0.44%	100.00%
ETF	0.10%	99.79%	0.11%	99.79%	0.11%	99.77%	0.12%	99.74%

Data obtained from 1 minute snapshots of the trading book (5 levels) during trading days of the relevant month.

Market Spread: means the difference between bid and ask prices divided by the mid quote at which it was possible to buy and sell simultaneously the relevant amount.

% Obser: means the percentage of observations at which it would be possible to buy and sell simultaneously the relevant amount.

The average showed is the weighted average on AUM deposited in Monte Titoli is used: it's the average calculated taking into account the AUM (asset under management) deposited in Monte Titoli.

News

ETFplus AUM reached the new record of €81.14bn (+16.71% vs September 2018).

New instrument listed in September:

- Invesco Euro Government Bond UCITS ETF Dist - IE00BGJWWX56
- Invesco Euro Government Bond 1-3 Year UCITS ETF Dist - IE00BGJWWY63
- Invesco Euro Government Bond 3-5 Year UCITS ETF Dist - IE00BGJWWV33
- Invesco Euro Government Bond 5-7 Year UCITS ETF Dist - IE00BGJWWT11
- Invesco Euro Government Bond 7-10 Year UCITS ETF Dist - IE00BGJWWW40
- UBS ETF - Bloomberg Barclays MSCI US Liquid Corporates Sustainable UCITS ETF (USD) A-acc - LU1215461168
- UBS ETF - MSCI Emerging Markets Socially Responsible UCITS ETF (USD) A-acc - LU1048313974
- UBS ETF - MSCI EMU Socially Responsible UCITS ETF (EUR) A-acc - LU0950674761
- UBS ETF - MSCI World Socially Responsible UCITS ETF (USD) A-acc - LU0950674332
- L&G CLEAN WATER UCITS ETF - IE00BK5BC891
- L&G ARTIFICIAL INTELLIGENCE UCITS ETF - IE00BK5BCD43
- L&G HEALTHCARE BREAKTHROUGH UCITS ETF - IE00BK5BC677
- VanEck Vectors Video Gaming and eSports UCITS ETF - IE00BYWQWR46
- Lyxor US Curve Steepening 2-10 UCITS ETF - LU2018762553
- Lyxor US Curve Flattening 2-10 UCITS ETF - LU2018761762
- Lyxor EUR Curve Steepening 2-10 UCITS ETF - LU2018760954
- Lyxor EUR Curve Flattening 2-10 UCITS ETF - LU2018760012
- Lyxor MSCI China UCITS ETF - LU1841731745
- Lyxor MSCI Emerging Markets Ex China UCITS ETF - LU2009202107
- HSBC MSCI SAUDI ARABIA 20/35 CAPPED UCITS ETF - IE00BGHHCV04

Markets Analysis
Piazza degli Affari, 6 - 20123 Milano
T +39 02 724261 | Fax +39 02 8646.4323
e-mail: markets_analysis@borsaitaliana.it
www.borsaitaliana.it

This document contains text, data, graphics, photographs, illustrations, artwork, names, logos, trade marks, service marks and information ("Information") connected with Borsa Italiana S.p.A. ("Borsa Italiana"). All reasonable efforts have been made to ensure that the information in this document was correct at the time of publication. However, Borsa Italiana Spa accepts no liability for decisions taken, or systems-related or other work carried out by any party based on this document. The publication of this document does not represent solicitation, by Borsa Italiana, of public saving and is not to be considered as a recommendation by Borsa Italiana as to the suitability of the investment, if any, herein described.

© September 2019 Borsa Italiana S.p.A. All rights reserved.