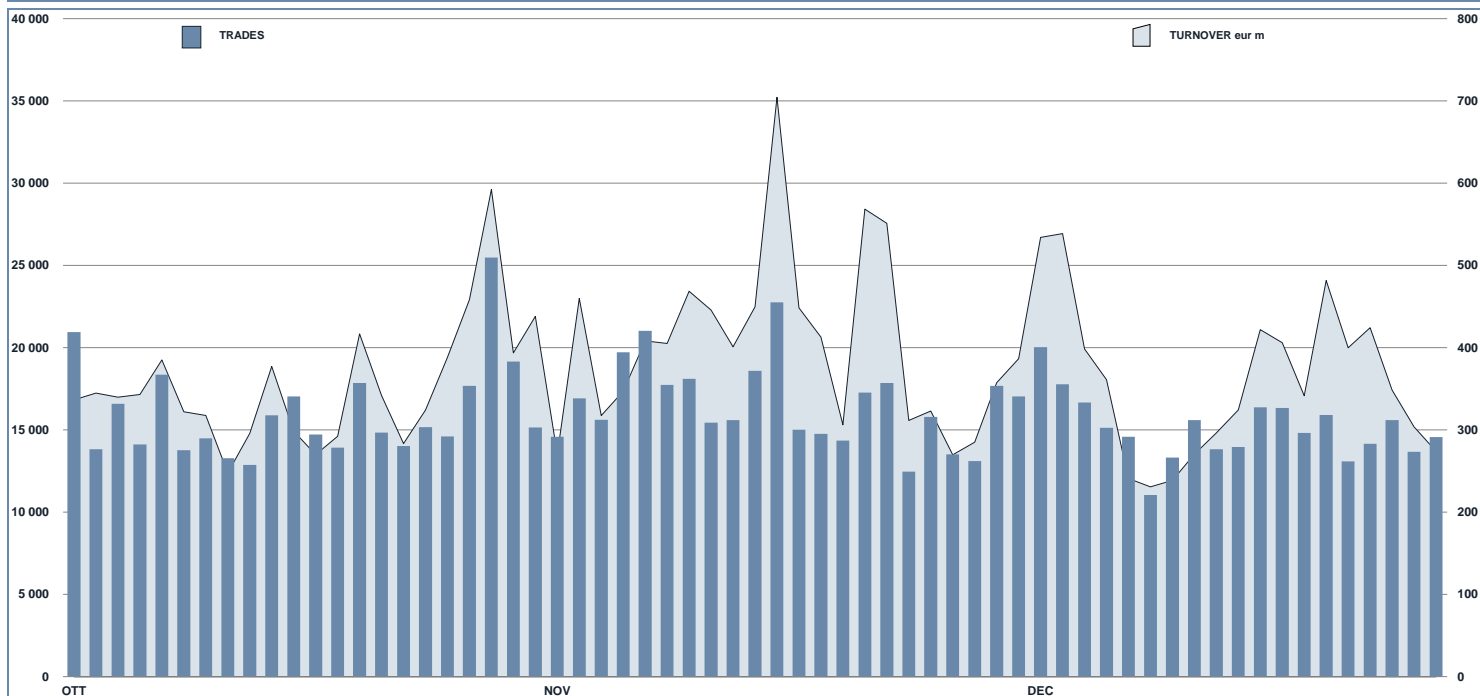




ETFPlus Statistics

December 2017

ETFPUS DAILY TURNOVER



MAIN INDICATORS

LISTED INSTRUMENT	MONTH		AUM in MT		NOVEMBER 2017		DECEMBER 2017		JAN - DEC 2017	
	LISTED	MONTH	eur m	eur m	Trades	Turnover	Trades	Turnover	Trades	Turnover
	END OF MONTH	NEW LISTED	30/11/2017	29/12/2017	eur m	eur m	eur m	eur m	eur m	eur m
ETF - DEVELOPED MARKET	226	3	23 900.01	23 986.13	90 962	4 196.3	77 837	3 169.1	1 066 630	40 799.0
ETF - CORPORATE AND GOV BOND	243	0	24 125.18	24 127.39	58 289	1 516.1	48 868	1 439.9	762 584	21 960.1
ETF - EMERGING MARKETS	80	1	4 623.61	4 584.30	25 798	516.5	18 894	414.5	291 493	5 341.4
ETF - STYLE	84	0	2 367.19	2 303.53	10 596	192.8	7 809	174.8	114 101	1 916.9
OTHERS	152	0	3 686.14	3 689.31	32 828	577.3	22 804	404.5	319 557	6 309.3
ETC/ETN	315	2	6 107.80	6 151.64	146 325	1 887.4	110 179	1 221.3	1 831 733	21 104.1
OPEN OICR	126	1	271.99	275.48	265	14.0	172	13.7	2 383	225.4
TOTAL	1 226	7	65 081.9	65 117.78	365 063	8 900.4	286 563	6 837.6	4 388 481	97 656.3

MOST TRADED IN THE MONTH BY TRADES AND RELATIVE SPREAD

Name	Alphab.	ISIN	TRADES		SPREAD	
			number	% TOT	BBO	25 000 €
1 BOOST NATURAL GAS 3X LEVERAGE DAILY	3NGL	IE00B8VC8061	14 188	5.0%	0.56%	0.68%
2 BOOST WTI OIL 3X LEVERAGE DAILY	3OIL	IE00B7ZQC614	8 958	3.1%	0.15%	0.17%
3 ISHARES EURO STOXX 50 UCITS ETF EUR DIST	EUE	IE0008471009	6 397	2.2%	0.05%	0.05%
4 BOOST WTI OIL 3X SHORT DAILY	3OIS	IE00B7SX5Y86	5 911	2.1%	0.18%	0.21%
5 LYXOR UCITS ETF FTSE MIB DAILY LEVERAGED	LEVMB	FR0010446658	4 786	1.7%	0.07%	0.07%
6 LYXOR UCITS ETF FTSE MIB DAI DOU SHT XBR	XBRMIB	FR0010446666	4 403	1.5%	0.07%	0.07%
7 LYXOR UCITS ETF FTSE MIB	ETFMIB	FR0010010827	3 933	1.4%	0.05%	0.05%
8 ETFS 3X DAILY LONG FTSE MIB	IT3L	JE00B8DVVK97	3 814	1.3%	0.12%	0.13%
9 BOOST NATURAL GAS 3X SHORT DAILY	3NGS	IE00B76BRD76	3 748	1.3%	0.76%	0.86%
# BOOST FTSE MIB 3X SHORT DAILY	3ITS	IE00B873CW36	3 708	1.3%	0.09%	0.09%

MOST TRADED IN THE MONTH BY TURNOVER AND RELATIVE SPREAD

Name	Alphab.	ISIN	TURNOVER		SPREAD	
			eur m	% TOT	BBO	25 000 €
1 ISHARES EURO STOXX 50 UCITS ETF EUR DIST	EUE	IE0008471009	254	3.7%	0.05%	0.05%
2 LYXOR UCITS ETF FTSE MIB	ETFMIB	FR0010010827	209	3.1%	0.05%	0.05%
3 DB X-TRACKERS DAX UCITS ETF DR	XDAX	LU0274211480	135	2.0%	0.04%	0.04%
4 ISHARES CORE S&P 500 UCITS ETF USD ACC	CSSPX	IE00B5BMR087	119	1.7%	0.04%	0.04%
5 BOOST WTI OIL 3X LEVERAGE DAILY	3OIL	IE00B7ZQC614	109	1.6%	0.15%	0.17%
6 UBS MSCI EMU UCITS ETF A-DIS	EMUEUA	LU0147308422	109	1.6%	0.07%	0.07%
7 LYXOR UCITS ETF FTSE MIB DAILY LEVERAGED	LEVMB	FR0010446658	101	1.5%	0.07%	0.07%
8 ISHARES EURO GOVT BOND 3-5YR UCITS ETF	IBGX	IE00B1FZS681	100	1.5%	0.05%	0.05%
9 ISHARES STOXX EUROPE 600 UCITS ETF	EXSA	DE0002635307	98	1.4%	0.06%	0.06%
# LYXOR FTSE ITAL MID CAP PIR DR UCITS ETF	ITAMID	FR0011758085	94	1.4%	0.10%	0.11%

MOST TRADED IN THE YEAR BY TRADES AND RELATIVE SPREAD

Name	Alphab.	ISIN	TRADES		SPREAD	
			number	% TOT	BBO	25 000 €
1 BOOST WTI OIL 3X LEVERAGE DAILY	3OIL	IE00B7ZQC614	254 114	5.8%	0.17%	0.20%
2 BOOST NATURAL GAS 3X LEVERAGE DAILY	3NGL	IE00B8VC8061	160 386	3.7%	0.31%	0.47%
3 LYXOR UCITS ETF FTSE MIB DAILY LEVERAGED	LEVMB	FR0010446658	118 616	2.7%	0.08%	0.09%
4 BOOST WTI OIL 3X SHORT DAILY	3OIS	IE00B7SX5Y86	109 956	2.5%	0.18%	0.24%
5 LYXOR UCITS ETF FTSE MIB DAI DOU SHT XBR	XBRMIB	FR0010446666	80 966	1.8%	0.11%	0.11%
6 LYXOR UCITS ETF FTSE MIB	ETFMIB	FR0010010827	73 055	1.7%	0.03%	0.04%
7 BOOST FTSE MIB 3X SHORT DAILY	3ITS	IE00B873CW36	61 146	1.4%	0.13%	0.13%
8 LYXOR FTSE ITAL MID CAP PIR DR UCITS ETF	ITAMID	FR0011758085	60 400	1.4%	0.14%	0.17%
9 BOOST NATURAL GAS 3X SHORT DAILY	3NGS	IE00B76BRD76	60 078	1.4%	0.76%	0.80%
# ETFS 2X DAILY LONG WTI CRUDE OIL	LOIL	JE00BDD9Q840	59 684	1.4%	0.15%	0.23%

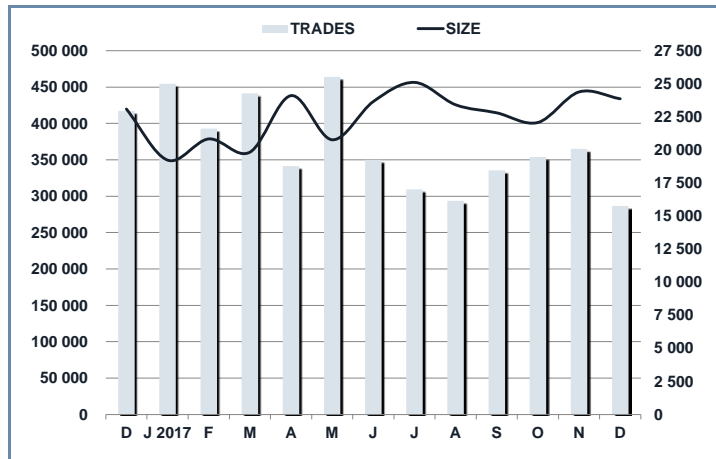
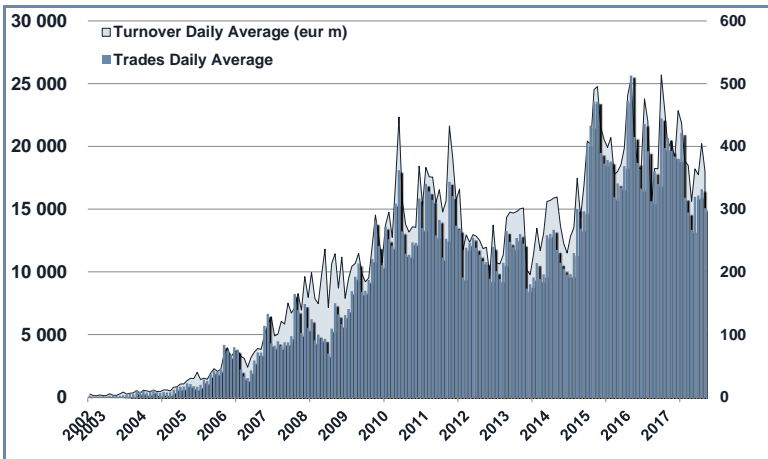
MOST TRADED IN THE YEAR BY TURNOVER AND RELATIVE SPREAD

Name	Alphab.	ISIN	TURNOVER		SPREAD	
			eur m	% TOT	BBO	25 000 €
1 LYXOR UCITS ETF FTSE MIB	ETFMIB	FR0010010827	4 373	4.5%	0.03%	0.04%
2 ISHARES EURO STOXX 50 UCITS ETF EUR DIST	EUE	IE0008471009	2 578	2.6%	0.05%	0.05%
3 BOOST WTI OIL 3X LEVERAGE DAILY	3OIL	IE00B7ZQC614	2 407	2.5%	0.17%	0.20%
4 LYXOR UCITS ETF FTSE MIB DAILY LEVERAGED	LEVMB	FR0010446658	2 302	2.4%	0.08%	0.09%
5 LYXOR UCITS ETF FTSE MIB DAI DOU SHT XBR	XBRMIB	FR0010446666	1 598	1.6%	0.11%	0.11%
6 LYXOR FTSE ITAL MID CAP PIR DR UCITS ETF	ITAMID	FR0011758085	1 461	1.5%	0.14%	0.17%
7 LYXOR EURO STOXX 50 (DR) UCITS ETF	MSE	FR0007054358	1 402	1.4%	0.05%	0.05%
8 BOOST WTI OIL 3X SHORT DAILY	3OIS	IE00B7SX5Y86	1 348	1.4%	0.18%	0.24%
9 LYXOR UCITS ETF DAX	DAXX	LU0252633754	1 245	1.3%	0.04%	0.04%
# ISHARES CORE S&P 500 UCITS ETF USD ACC	CSSPX	IE00B5BMR087	1 131	1.2%	0.05%	0.05%

TRADING BY SIZE OF TURNOVER

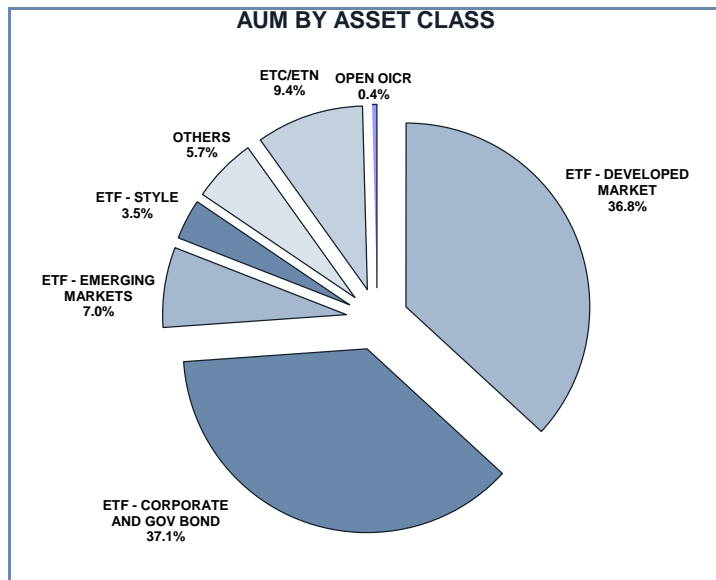
SIZE OF TURNOVER		NOVEMBER 2017		DECEMBER 2017		YEAR 2017			
		Trades	Turnover eur m	Trades	Turnover eur m	Trades	% TOT	Turnover eur m	% TOT
-	500	34 191	7.8	28 555	6.6	421 140	9.6%	99.3	0.1%
500	1 000	25 955	19.4	21 246	15.8	338 872	7.7%	252.0	0.3%
1 000	2 000	45 116	66.0	36 209	52.7	551 523	12.6%	801.0	0.8%
2 000	3 000	31 237	76.7	23 585	58.2	391 733	8.9%	966.1	1.0%
3 000	4 000	22 569	78.7	16 452	57.3	278 823	6.4%	965.6	1.0%
4 000	5 000	21 124	95.1	14 992	67.4	248 740	5.7%	1 123.9	1.2%
5 000	6 000	16 650	90.2	11 219	60.8	208 970	4.8%	1 135.9	1.2%
6 000	7 000	11 314	73.4	8 061	52.3	145 142	3.3%	939.5	1.0%
7 000	8 000	9 264	69.4	7 240	54.2	118 697	2.7%	889.0	0.9%
8 000	9 000	9 835	83.6	6 997	59.4	106 806	2.4%	907.3	0.9%
9 000	10 000	9 560	91.4	7 346	70.0	126 516	2.9%	1 208.3	1.2%
10 000	15 000	27 866	337.1	24 308	290.9	382 504	8.7%	4 623.8	4.7%
15 000	20 000	17 887	312.0	14 550	256.2	202 903	4.6%	3 531.6	3.6%
20 000	25 000	12 663	282.8	11 802	262.2	145 105	3.3%	3 238.8	3.3%
25 000	30 000	9 452	259.3	7 486	204.4	101 846	2.3%	2 786.8	2.9%
30 000	35 000	6 844	221.4	6 264	203.4	81 379	1.9%	2 638.4	2.7%
35 000	40 000	6 024	225.5	5 362	200.7	62 268	1.4%	2 325.3	2.4%
40 000	45 000	4 367	185.1	3 420	145.0	49 009	1.1%	2 080.5	2.1%
45 000	50 000	4 089	194.4	3 120	149.0	45 517	1.0%	2 162.6	2.2%
50 000	75 000	15 392	909.9	11 122	653.2	127 552	2.9%	7 665.9	7.8%
75 000	100 000	6 744	584.0	4 491	390.5	72 768	1.7%	6 370.4	6.5%
100 000	125 000	4 173	462.7	3 275	360.4	50 839	1.2%	5 625.2	5.8%
125 000	150 000	2 720	370.0	1 736	238.8	26 287	0.6%	3 602.0	3.7%
150 000		10 027	3 804.4	7 725	2 928.4	103 542	2.4%	41 717.1	42.7%
TOTAL		365 063	8 900.4	286 563	6 837.6	4 388 481		97 656.3	

TRADING EVOLUTION



FOCUS

MONTH	INSTRUMENT WITH HIGHEST TURNOVER		INSTRUMENT WITH HIGHEST TRADES NUMBER	
	ALPHA CODE	EUR	ALPHA CODE	NUMBER
DECEMBER	ETFMIB	477 326 071	3OIL	27 198
JANUARY 2017	3OIL	306 062 721	3OIL	27 427
FEBRUARY	ETFMIB	294 127 552	3OIL	21 421
MARCH	3OIL	292 229 307	3OIL	33 615
APRIL	ETFMIB	437 288 315	3OIL	21 965
MAY	ETFMIB	524 941 058	3OIL	32 687
JUNE	ETFMIB	602 130 060	3OIL	22 766
JULY	ETFMIB	446 705 759	3OIL	19 196
AUGUST	ETFMIB	311 162 515	3OIL	17 504
SEPTEMBER	ETFMIB	302 756 584	3OIL	16 809
OCTOBER	ETFMIB	479 679 910	3OIL	16 922
NOVEMBER	ETFMIB	347 609 565	3NGL	16 217
DECEMBER	EUE	253 885 530	3NGL	14 188



SPREAD

	SPREAD							
	BBO		5 000 €		15 000 €		25 000 €	
	SPREAD	% OBSER	SPREAD	% OBSER	SPREAD	% OBSER	SPREAD	% OBSER
ETF - DEVELOPED MARKET	0.09%	100.00%	0.09%	100.00%	0.09%	100.00%	0.09%	99.99%
EQUITY ITALY	0.08%	100.00%	0.08%	100.00%	0.08%	100.00%	0.08%	100.00%
EQUITY EUROPE - REGIONAL	0.07%	100.00%	0.07%	100.00%	0.07%	100.00%	0.07%	100.00%
EQUITY EUROPE - SINGLE COUNTRY	0.11%	100.00%	0.11%	100.00%	0.11%	100.00%	0.11%	99.98%
EQUITY WORLD	0.11%	100.00%	0.11%	100.00%	0.12%	99.99%	0.12%	99.98%
EQUITY NORTH AMERICA	0.08%	100.00%	0.08%	100.00%	0.08%	100.00%	0.08%	100.00%
EQUITY PACIFIC	0.10%	100.00%	0.10%	100.00%	0.10%	100.00%	0.11%	99.99%
EQUITY SHORT (DEVELOPED)	0.13%	100.00%	0.14%	100.00%	0.14%	100.00%	0.14%	100.00%
LEVERAGED LONG	0.09%	100.00%	0.09%	100.00%	0.09%	100.00%	0.09%	100.00%
LEVERAGED SHORT	0.09%	100.00%	0.09%	100.00%	0.09%	100.00%	0.09%	100.00%
ETF - EMERGING MARKETS	0.17%	100.00%	0.18%	99.99%	0.18%	99.99%	0.18%	99.96%
EQUITY EMERGING - AFRICA/MIDDLE EAST	0.49%	100.00%	0.51%	99.98%	0.55%	99.91%	0.57%	99.46%
EQUITY EMERGING - ASIA	0.22%	100.00%	0.22%	100.00%	0.23%	99.99%	0.24%	99.98%
EQUITY EMERGING - CENTRE/SOUTH AMERICA	0.38%	100.00%	0.39%	100.00%	0.40%	99.98%	0.41%	99.94%
EQUITY EMERGING - EAST EUROPE	0.24%	100.00%	0.25%	100.00%	0.26%	99.99%	0.26%	99.99%
EQUITY EMERGING - WORLD	0.11%	100.00%	0.11%	99.99%	0.11%	99.99%	0.12%	99.96%
ETF - CORPORATE GOVERNMENT BONDS	0.09%	100.00%	0.09%	100.00%	0.10%	99.98%	0.10%	99.97%
INFLATION	0.13%	100.00%	0.14%	100.00%	0.14%	99.99%	0.14%	99.98%
LIQUIDITY	0.04%	100.00%	0.04%	100.00%	0.04%	100.00%	0.04%	100.00%
CORPORATE BOND - EURO	0.07%	100.00%	0.07%	100.00%	0.08%	100.00%	0.08%	99.99%
CORPORATE BOND - EX EURO	0.11%	100.00%	0.12%	99.99%	0.12%	99.96%	0.12%	99.93%
CORPORATE BOND - EMERGING	0.29%	100.00%	0.30%	100.00%	0.31%	100.00%	0.32%	100.00%
CORPORATE BOND - WORLD	0.19%	100.00%	0.20%	100.00%	0.21%	100.00%	0.21%	100.00%
CORPORATE BOND - HIGH YIELD	0.10%	100.00%	0.11%	100.00%	0.11%	99.99%	0.12%	99.95%
AGGREGATE BOND	0.11%	100.00%	0.13%	100.00%	0.14%	99.43%	0.14%	99.43%
BOND SHORT	0.07%	100.00%	0.07%	100.00%	0.07%	100.00%	0.08%	100.00%
BOND LEVERAGED LONG	0.08%	100.00%	0.08%	100.00%	0.08%	100.00%	0.08%	100.00%
BOND LEVERAGED SHORT	0.06%	100.00%	0.06%	100.00%	0.06%	100.00%	0.06%	100.00%
GOVERNMENT BONDS - EMERGING	0.15%	100.00%	0.15%	100.00%	0.16%	100.00%	0.16%	99.96%
GOVERNMENT BONDS - EURO	0.05%	100.00%	0.05%	100.00%	0.06%	100.00%	0.06%	100.00%
GOVERNMENT BONDS - ITALY	0.07%	100.00%	0.07%	100.00%	0.08%	100.00%	0.08%	100.00%
GOVERNMENT BONDS - WORLD	0.16%	100.00%	0.19%	100.00%	0.23%	99.93%	0.25%	99.90%
GOVERNMENT BONDS - EX EURO	0.07%	100.00%	0.07%	100.00%	0.08%	100.00%	0.08%	100.00%
ETF - STYLE	0.17%	100.00%	0.17%	100.00%	0.17%	100.00%	0.18%	99.98%
EQUITY STYLE (DEVELOPED)	0.17%	100.00%	0.17%	100.00%	0.17%	100.00%	0.17%	99.99%
EQUITY STYLE (EMERGING)	0.40%	100.00%	0.41%	99.96%	0.42%	99.94%	0.40%	99.36%
ETF - OTHERS	0.20%	100.00%	0.21%	99.99%	0.22%	99.97%	0.22%	99.92%
EQUITY SECTORS (DEVELOPED)	0.20%	100.00%	0.20%	100.00%	0.21%	100.00%	0.21%	100.00%
EQUITY THEMATIC	0.23%	100.00%	0.24%	100.00%	0.26%	99.97%	0.26%	99.93%
COMMODITIES	0.18%	100.00%	0.18%	100.00%	0.19%	99.99%	0.19%	99.96%
CREDIT INDICES	0.26%	100.00%	0.35%	100.00%	0.41%	100.00%	0.43%	100.00%
REAL ESTATE	0.13%	100.00%	0.14%	100.00%	0.14%	100.00%	0.14%	100.00%
VOLATILITY INDICES	0.33%	100.00%	0.35%	100.00%	0.39%	99.97%	0.40%	99.86%
FLEXIBLE	0.80%	100.00%	0.84%	99.30%	0.89%	98.09%	0.90%	93.92%
ETF	0.10%	100.00%	0.11%	100.00%	0.11%	99.99%	0.11%	99.98%

Data obtained from 1 minute snapshots of the trading book (5 levels) during trading days of the relevant month.

Market Spread: means the difference between bid and ask prices divided by the mid quote at which it was possible to buy and sell simultaneously the relevant amount.

% Obser: means the percentage of observations at which it would be possible to buy and sell simultaneously the relevant amount.

The average showed is the weighted average on AUM deposited in Monte Titoli is used: it's the average calculated taking into account the AUM (asset under management) deposited in Monte Titoli.

News

During the last month, the following instruments were listed on ETFplus market:

- Source STOXX Europe Mid 200 UCITS ETF - IE00B60SX063
- Timeo Neutral SICAV - European Absolute Return Fund
- Lyxor MSCI EMU (DR) UCITS ETF - LU1646360971
- Boost Bund 30Y 3x Short Daily ETP - IE00BF4TW453
- Boost US Treasuries 30Y 3x Sht Daily ETP - IE00BF4TW784
- BNP Paribas Easy MSCI KLD 400 US SRI UCITS ETF EUR - LU1659681669
- BNP Paribas Easy MSCI Emerging Markets SRI UCITS ETF EUR - LU1659681313

These new instruments bring to 1 226 the number of products listed on ETFplus market (785 ETFs, 315 ETCs/ETNs and 126 Open Funds).

Markets Analysis

Piazza degli Affari, 6 - 20123 Milano
T +39 02 724261 | Fax +39 02 8646.4323
e-mail: markets_analysis@borsaitaliana.it
www.borsaitaliana.it

This document contains text, data, graphics, photographs, illustrations, artwork, names, logos, trade marks, service marks and information ("Information") connected with Borsa Italiana S.p.A. ("Borsa Italiana").

All reasonable efforts have been made to ensure that the Information in this document was correct at the time of publication. However, Borsa Italiana Spa accepts no liability for decisions taken, or systems-related or other work carried out by any party based on this document. The publication of this document does not represent solicitation, by Borsa Italiana, of public saving and is not to be considered as a recommendation by Borsa Italiana as to the suitability of the investment, if any, herein described.

© December 2017 Borsa Italiana S.p.A. All rights reserved.



London
Stock Exchange Group