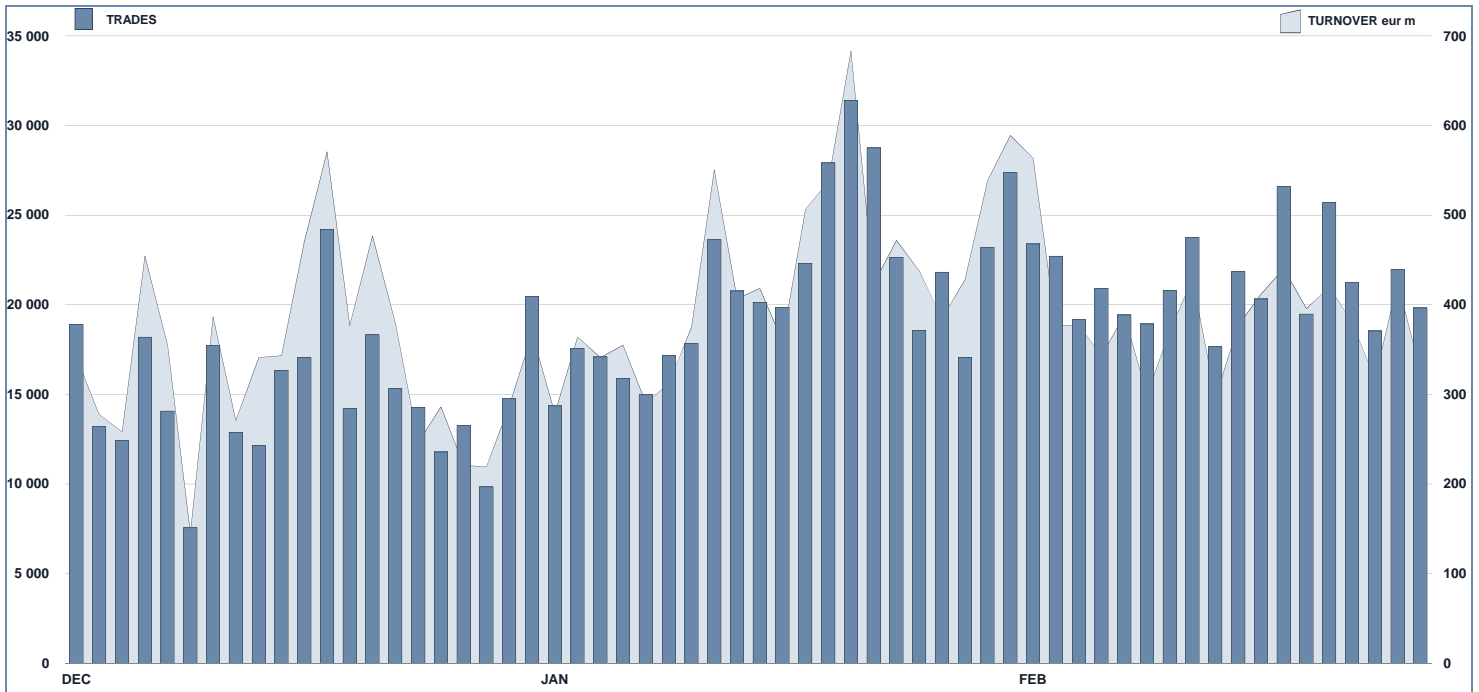




ETF Statistics

February 2015

ETFPLUS DAILY TURNOVER



MAIN INDICATORS

LISTED INSTRUMENT	AUM in MT				TRADING					
	LISTED END OF MONTH	MONTH NEW LISTED	EUR M	EUR M	JANUARY 2015		FEBRUARY 2015		JAN - FEB 2015	
					Trades	Turnover eur m	Trades	Turnover eur m	Trades	Turnover eur m
ETF - DEVELOPED MARKET	211	4	16 824.24	18 279.18	153 547	4 249.39	128 512	3 607.27	282 059	7 856.66
ETF - CORPORATE E GOV BOND	170	1	14 471.43	15 155.32	51 866	1 606.83	44 925	1 480.81	96 791	3 087.64
ETF - EMERGING MARKETS	98	1	3 031.38	3 326.71	40 032	689.81	36 274	686.02	76 306	1 375.84
ETF - STYLE	54	9	1 154.46	1 302.12	8 468	134.69	9 887	176.59	18 355	311.28
OTHERS	146	0	2 148.58	2 274.89	22 539	352.62	22 614	368.14	45 153	720.76
ETC/ETN	256	0	3 179.88	3 402.59	148 607	1 546.11	190 684	1 748.63	339 291	3 294.74
OPEN OICR	12	12		0.02			16	0.03	16	0.03
<b>TOTAL</b>	<b>947</b>	<b>27</b>	<b>40 809.96</b>	<b>43 740.84</b>	<b>425 059</b>	<b>8 579.45</b>	<b>432 912</b>	<b>8 067.49</b>	<b>857 971</b>	<b>16 646.95</b>

MOST TRADED IN THE MONTH BY TRADES AND RELATIVE SPREAD

Name	Alphab.	ISIN	TRADES		SPREAD	
			number	% TOT	BBO	25 000 €
1 ETFS NATURAL GAS	NGAS	GB00815KY104	2 942	0.7%	0.23%	0.27%
2 ETFS BRENT 1MTH OIL SECURITIES	OILB	GB0080CTWC01	2 286	0.5%	0.54%	0.54%
3 DB PHYSICAL GOLD EURO HEDGED ETC	XAD1	DE000A1EK0G3	894	0.2%	0.12%	0.13%
4 ETFS GOLD	BULL	GB00815KXX56	586	0.1%	0.13%	0.13%
5 BOOST SILVER 3X SHORT DAILY	3SIS	IE0088JG1787	333	0.1%	0.59%	0.66%
6 LYXOR ETN GOLD	GOLDL	XS0416722857	208	0.0%	0.64%	0.79%
7 ETFS SILVER	SLVR	GB00815KY328	205	0.0%	0.54%	0.64%
8 BOOST GOLD 3X SHORT DAILY	3GOS	IE0086K4BP29	91	0.0%	0.51%	0.55%
9 LYXOR ETN SHORT OIL	OILS	XS0416714599	76	0.0%	1.01%	1.04%
10 ETFS EUR DAILY HEDGED NATURAL GAS	ENGS	JE0086XF0923	71	0.0%	0.36%	0.36%

MOST TRADED IN THE MONTH BY TURNOVER AND RELATIVE SPREAD

Name	Alphab.	ISIN	TURNOVER		SPREAD	
			eur m	% TOT	BBO	25 000 €
1 LYXOR UCITS ETF FTSE MIB DAILY LEVERAGED	LEVMB	FR0010446658	506	6.3%	0.10%	0.10%
2 LYXOR UCITS ETF FTSE MIB	ETFMIB	FR0010010827	446	5.5%	0.07%	0.07%
3 ETFS WTI CRUDE OIL	CRUD	GB00815KXV33	232	2.9%	0.10%	0.11%
4 ISHARES EURO STOXX 50 UCITS ETF (DIST)	EUE	IE0008471009	230	2.9%	0.06%	0.07%
5 LYXOR UCITS ETF FTSE MIB DAI DOU SHT XBR	XBRMB	FR0010446666	220	2.7%	0.13%	0.14%
6 ETFS DAILY LEVERAGED WTI CRUDE OIL	LOIL	JE0082NFTJ73	214	2.7%	0.18%	0.20%
7 BOOST WTI OIL 3X LEVERAGE DAILY	3OIL	IE008720C614	208	2.6%	0.29%	0.43%
8 ISHARES S&P 500 UCITS ETF (DIST)	IUSA	IE0031442068	166	2.1%	0.05%	0.05%
9 ISHARES MSCI EMERG MKTS UCITS ETF (CIEEM)	IE0080M63177		117	1.5%	0.09%	0.09%
10 ISHARES MSCI WORLD UCITS ETF (DIST)	IWRD	IE0080M62058	105	1.3%	0.07%	0.07%

MOST TRADED IN THE YEAR BY TURNOVER AND RELATIVE SPREAD

Name	Alphab.	ISIN	TRADES		SPREAD	
			number	% TOT	BBO	25 000 €
1 LYXOR UCITS ETF FTSE MIB DAILY LEVERAGED	LEVMB	FR0010446658	65 599	7.6%	0.12%	0.12%
2 BOOST WTI OIL 3X LEVERAGE DAILY	3OIL	IE008720C614	44 528	5.2%	0.37%	0.50%
3 LYXOR UCITS ETF FTSE MIB DAI DOU SHT XBR	XBRMB	FR0010446666	42 014	4.9%	0.13%	0.14%
4 ETFS DAILY LEVERAGED WTI CRUDE OIL	LOIL	JE0082NFTJ73	38 171	4.4%	0.28%	0.31%
5 ETFS WTI CRUDE OIL	CRUD	GB00815KXV33	30 549	3.6%	0.12%	0.14%
6 LYXOR UCITS ETF FTSE MIB	ETFMIB	FR0010010827	24 124	2.8%	0.08%	0.08%
7 ETFS DAILY LEVERAGED NATURAL GAS	LNGA	JE0082NFTQ41	22 296	2.6%	0.85%	0.93%
8 BOOST NATURAL GAS 3X LEVERAGE DAILY	3NGL	IE0088VC8061	21 839	2.5%	0.49%	0.82%
9 BOOST NATURAL GAS 3X SHORT DAILY	3NGS	IE008768RD76	13 206	1.5%	0.59%	0.92%
10 BOOST WTI OIL 3X SHORT DAILY	3OIS	IE00875X5Y86	10 873	1.3%	0.56%	1.05%

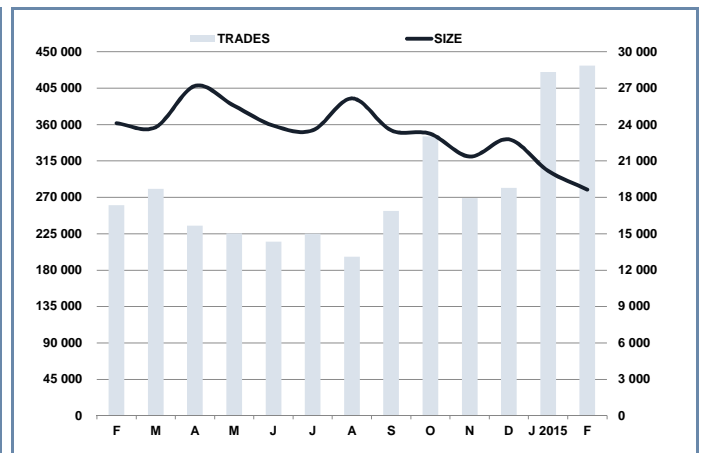
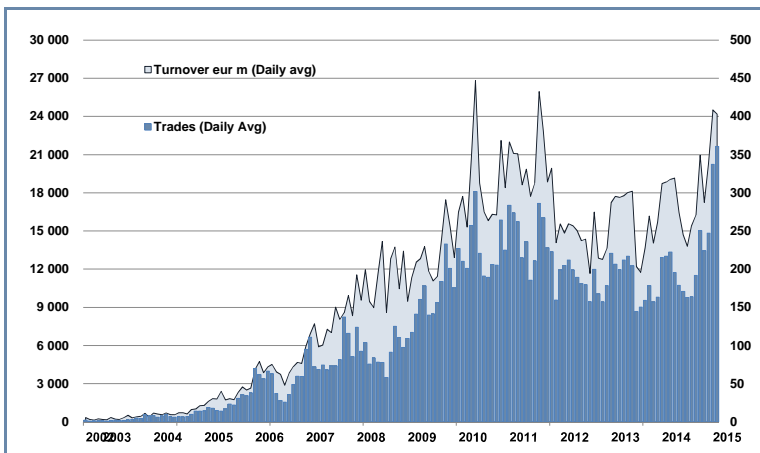
MOST TRADED IN THE YEAR BY TRADES AND RELATIVE SPREAD

Name	Alphab.	ISIN	TURNOVER		SPREAD	
			eur m	% TOT	BBO	25 000 €
1 LYXOR UCITS ETF FTSE MIB DAILY LEVERAGED	LEVMB	FR0010446658	1 096	6.6%	0.12%	0.12%
2 LYXOR UCITS ETF FTSE MIB	ETFMIB	FR0010010827	861	5.2%	0.08%	0.08%
3 LYXOR UCITS ETF FTSE MIB DAI DOU SHT XBR	XBRMB	FR0010446666	685	4.1%	0.13%	0.14%
4 ISHARES EURO STOXX 50 UCITS ETF (DIST)	EUE	IE0008471009	587	3.5%	0.07%	0.08%
5 ISHARES S&P 500 UCITS ETF (DIST)	IUSA	IE0031442068	392	2.4%	0.07%	0.07%
6 ETFS WTI CRUDE OIL	CRUD	GB00815KXV33	375	2.3%	0.12%	0.14%
7 ETFS DAILY LEVERAGED WTI CRUDE OIL	LOIL	JE0082NFTJ73	295	1.8%	0.28%	0.31%
8 BOOST WTI OIL 3X LEVERAGE DAILY	3OIL	IE008720C614	278	1.7%	0.37%	0.50%
9 ETFS PHYSICAL GOLD	PHAU	IE0081V53770	264	1.6%	0.08%	0.09%
10 ETFS 3X LONG USD SHORT EUR	EUS3	JE00830Q4551	247	1.5%	0.19%	0.20%

**TRADING BY SIZE OF EVOLUTION**

SIZE OF TURNOVER		JANUARY 2015		FEBRUARY 2015		YEAR 2015			
		trades	turnover €	trades	turnover €	trades	% TOT	turnover €	% TOT
-	500	33 825	8.8	31 787	8.2	65 612	7.6%	17.0	0.1%
500	1 000	32 302	24.1	35 696	26.9	67 998	7.9%	51.0	0.3%
1 000	2 000	57 657	83.6	59 634	85.8	117 291	13.7%	169.5	1.0%
2 000	3 000	39 013	96.0	42 480	104.3	81 493	9.5%	200.3	1.2%
3 000	4 000	27 384	94.4	30 719	106.2	58 103	6.8%	200.5	1.2%
4 000	5 000	23 085	104.6	25 302	114.9	48 387	5.6%	219.5	1.3%
5 000	6 000	21 854	118.1	23 256	125.9	45 110	5.3%	244.0	1.5%
6 000	7 000	13 424	87.1	13 677	88.5	27 101	3.2%	175.7	1.1%
7 000	8 000	13 170	98.3	11 818	88.6	24 988	2.9%	187.0	1.1%
8 000	9 000	8 914	75.8	9 449	80.3	18 363	2.1%	156.1	0.9%
9 000	10 000	13 038	124.0	13 733	131.3	26 771	3.1%	255.2	1.5%
10 000	15 000	38 996	471.3	38 602	460.4	77 598	9.0%	931.6	5.6%
15 000	20 000	22 365	389.2	20 395	357.7	42 760	5.0%	747.0	4.5%
20 000	25 000	14 789	328.8	15 402	342.9	30 191	3.5%	671.7	4.0%
25 000	30 000	8 661	236.9	9 502	259.9	18 163	2.1%	496.8	3.0%
30 000	35 000	8 091	262.3	6 772	218.8	14 863	1.7%	481.2	2.9%
35 000	40 000	8 069	299.8	6 846	253.6	14 915	1.7%	553.4	3.3%
40 000	45 000	5 301	224.9	4 475	190.2	9 776	1.1%	415.2	2.5%
45 000	50 000	3 840	182.5	4 245	201.9	8 085	0.9%	384.4	2.3%
50 000	75 000	10 512	639.0	10 283	616.3	20 795	2.4%	1 255.3	7.5%
75 000	100 000	6 794	589.7	5 329	462.4	12 123	1.4%	1 052.1	6.3%
100 000	125 000	3 309	362.8	3 741	409.4	7 050	0.8%	772.2	4.6%
125 000	150 000	1 879	258.9	1 859	255.3	3 738	0.4%	514.2	3.1%
150 000		8 787	3 418.6	7 910	3 077.7	16 697	1.9%	6 496.3	39.0%
<b>TOTAL</b>		<b>425 059</b>	<b>8 579.5</b>	<b>432 912</b>	<b>8 067.5</b>	<b>857 971</b>		<b>16 646.9</b>	

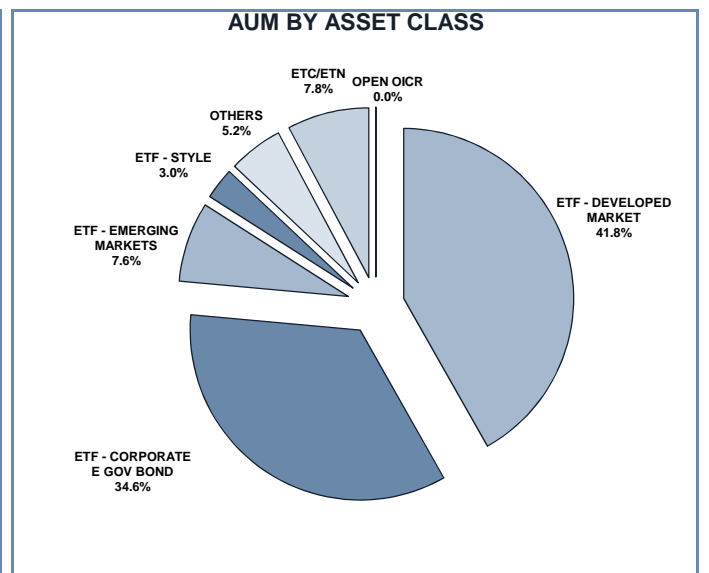
**TRADING EVOLUTION**



**FOCUS**

MONTH	INSTRUMENT WITH HIGHEST TURNOVER		INSTRUMENT WITH HIGHEST TRADES NUMBER	
	ALPHA CODE	EUR	ALPHA CODE	NUMBER
FEBRUARY 2014	ETFMIB	712 591 390	LEVMIB	29 371
MARCH	ETFMIB	823 061 111	LEVMIB	28 956
APRIL	LEVMIB	703 753 099	LEVMIB	28 821
MAY	LEVMIB	645 555 984	LEVMIB	26 119
JUNE	LEVMIB	526 244 966	LEVMIB	21 616
JULY	LEVMIB	487 450 254	LEVMIB	22 608
AUGUST	XBRMIB	440 627 558	XBRMIB	20 233
SEPTEMBER	LEVMIB	491 952 646	LEVMIB	22 151
OCTOBER	XBRMIB	824 900 380	LEVMIB	44 245
NOVEMBER	XBRMIB	472 954 320	LEVMIB	26 588
DECEMBER	XBRMIB	428 584 429	LEVMIB	26 746
JANUARY 2015	LEVMIB	589 942 362	LEVMIB	37 877
FEBRUARY	LEVMIB	506 361 170	3OIL	31 946

**AUM BY ASSET CLASS**



## SPREAD

	SPREAD							
	BBO		5 000 €		15 000 €		25 000 €	
	SPREAD	%OBSER	SPREAD	%OBSER	SPREAD	%OBSER	SPREAD	%OBSER
<b>ETF - DEVELOPED MARKET</b>	<b>0.13%</b>	<b>100.00%</b>	<b>0.13%</b>	<b>100.00%</b>	<b>0.13%</b>	<b>99.97%</b>	<b>0.13%</b>	<b>99.95%</b>
EQUITY ITALY	0.09%	100.00%	0.09%	100.00%	0.09%	99.99%	0.10%	99.99%
EQUITY EUROPE - REGIONAL	0.12%	100.00%	0.12%	100.00%	0.12%	100.00%	0.13%	100.00%
EQUITY EUROPE - SINGLE COUNTRY	0.18%	100.00%	0.19%	99.98%	0.20%	99.58%	0.21%	99.08%
EQUITY WORLD	0.11%	100.00%	0.11%	99.99%	0.11%	99.96%	0.11%	99.94%
EQUITY NORTH AMERICA	0.12%	100.00%	0.12%	100.00%	0.12%	100.00%	0.12%	100.00%
EQUITY PACIFIC	0.17%	100.00%	0.17%	100.00%	0.18%	99.99%	0.19%	99.97%
EQUITY SHORT (DEVELOPED)	0.15%	100.00%	0.15%	100.00%	0.16%	100.00%	0.16%	100.00%
LEVERAGED LONG	0.13%	100.00%	0.13%	100.00%	0.13%	100.00%	0.13%	99.99%
LEVERAGED SHORT	0.18%	100.00%	0.19%	100.00%	0.19%	100.00%	0.19%	99.97%
<b>ETF - EMERGING MARKETS</b>	<b>0.29%</b>	<b>100.00%</b>	<b>0.31%</b>	<b>99.96%</b>	<b>0.33%</b>	<b>99.91%</b>	<b>0.34%</b>	<b>99.74%</b>
EQUITY EMERGING - AFRICA/MIDDLE EAST	0.59%	100.00%	0.63%	99.96%	0.68%	99.87%	0.71%	99.44%
EQUITY EMERGING - ASIA	0.31%	100.00%	0.33%	99.98%	0.35%	99.91%	0.36%	99.67%
EQUITY EMERGING - CENTRE/SOUTH AMERICA	0.39%	100.00%	0.42%	99.98%	0.44%	99.93%	0.45%	99.88%
EQUITY EMERGING - EAST EUROPE	0.39%	100.00%	0.45%	99.99%	0.49%	99.92%	0.51%	99.50%
EQUITY EMERGING - WORLD	0.20%	100.00%	0.20%	99.93%	0.21%	99.90%	0.21%	99.87%
EQUITY SHORT (EMERGING)	0.62%	100.00%	0.63%	99.99%	0.64%	99.99%	0.64%	99.99%
<b>ETF - CORPORATE GOVERNMENT BONDS</b>	<b>0.12%</b>	<b>100.00%</b>	<b>0.12%</b>	<b>99.98%</b>	<b>0.13%</b>	<b>99.97%</b>	<b>0.13%</b>	<b>99.90%</b>
INFLATION	0.21%	100.00%	0.22%	99.96%	0.23%	99.95%	0.24%	99.24%
LIQUIDITY	0.07%	100.00%	0.08%	99.94%	0.08%	99.94%	0.08%	99.94%
CORPORATE BOND	0.11%	100.00%	0.11%	100.00%	0.11%	99.99%	0.12%	99.97%
AGGREGATE BOND	0.15%	100.00%	0.15%	99.52%	0.15%	99.51%	0.16%	99.50%
BOND SHORT	0.16%	100.00%	0.16%	99.98%	0.16%	99.98%	0.16%	99.98%
BOND LEVERAGED LONG	0.07%	100.00%	0.07%	99.99%	0.07%	99.97%	0.07%	99.97%
BOND LEVERAGED SHORT	0.07%	100.00%	0.07%	100.00%	0.07%	99.98%	0.07%	99.96%
GOVERNMENT BONDS - EMERGING	0.24%	100.00%	0.25%	99.98%	0.27%	99.96%	0.28%	99.71%
GOVERNMENT BONDS - EURO	0.08%	100.00%	0.08%	100.00%	0.09%	99.99%	0.09%	99.98%
GOVERNMENT BONDS - ITALY	0.16%	100.00%	0.16%	100.00%	0.16%	99.99%	0.17%	99.99%
GOVERNMENT BONDS - WORLD	0.15%	100.00%	0.15%	99.74%	0.16%	98.90%	0.16%	98.48%
GOVERNMENT BONDS - EX EURO	0.12%	100.00%	0.12%	100.00%	0.12%	100.00%	0.12%	99.98%
<b>ETF - STYLE</b>	<b>0.25%</b>	<b>100.00%</b>	<b>0.26%</b>	<b>99.98%</b>	<b>0.27%</b>	<b>99.92%</b>	<b>0.27%</b>	<b>99.86%</b>
EQUITY STYLE (DEVELOPED)	0.25%	100.00%	0.26%	99.98%	0.27%	99.92%	0.27%	99.86%
EQUITY STYLE (EMERGING)	0.37%	100.00%	0.37%	100.00%	0.39%	99.98%	0.39%	99.98%
<b>ETF - OTHERS</b>	<b>0.31%</b>	<b>100.00%</b>	<b>0.32%</b>	<b>99.93%</b>	<b>0.33%</b>	<b>99.83%</b>	<b>0.34%</b>	<b>99.64%</b>
EQUITY SECTORS (DEVELOPED)	0.28%	100.00%	0.29%	99.98%	0.30%	99.96%	0.31%	99.80%
EQUITY SECTORS (EMERGING)	0.00%	0.00%	0.00%	0.00%	0.00%	0.00%	0.00%	0.00%
EQUITY THEMATIC	0.56%	100.00%	0.59%	99.53%	0.61%	98.94%	0.62%	98.63%
COMMODITIES	0.22%	100.00%	0.23%	99.99%	0.23%	99.99%	0.24%	99.98%
CREDIT INDICES	0.11%	100.00%	0.11%	100.00%	0.11%	100.00%	0.11%	100.00%
REAL ESTATE	0.26%	100.00%	0.27%	99.98%	0.28%	99.95%	0.28%	99.87%
LEVERAGED CREDIT INDICES	0.43%	100.00%	0.43%	100.00%	0.43%	100.00%	0.43%	100.00%
VOLATILITY INDICES	1.38%	100.00%	1.45%	99.98%	1.53%	99.88%	1.58%	99.52%
CURRENCIES INDICES	0.31%	100.00%	0.31%	99.98%	0.31%	99.98%	0.32%	99.98%
FLEXIBLE	0.30%	100.00%	0.34%	99.99%	0.41%	99.17%	0.45%	95.20%
<b>ETF</b>	<b>0.15%</b>	<b>100.00%</b>	<b>0.16%</b>	<b>99.98%</b>	<b>0.16%</b>	<b>99.96%</b>	<b>0.17%</b>	<b>99.89%</b>

Data obtained from 1 minute snapshots of the trading book (5 levels) during trading days of the relevant month.

Market Spread: means the difference between bid and ask prices divided by the mid quote at which it was possible to buy and sell simultaneously the relevant amount.

% Obser: means the percentage of observations at which it would be possible to buy and sell simultaneously the relevant amount.

The average showed is the weighted average on AUM deposited in Monte Titoli is used: it's the average calculated taking into account the AUM (asset under management) deposited in Monte Titoli.

#### News

During February 2015, the ETF Asset Under Management set a new historical record reaching, at the end of the month, €40.34bn with a growth of 54.20% vs end of February 2014.

In February, the ETFplus market welcomed the first 12 open OICR issued by New Millennium Sicav.

During the last month, the following 27 instruments were listed on ETFplus market:

- 12 open OICR issued by New Millennium Sicav
- 12 iShares equity style ETFs
- 1 corporate floating rate bond ETF issued by Amundi
- 1 Amundi equity Japan ETF
- 1 Ossiam style ETF

Markets Analysis  
 Piazza degli Affari, 6 - 20123 Milano  
 T +39 02 724261 | Fax +39 02 8646.4323  
 e-mail: markets\_analysis@borsaitaliana.it  
[www.borsaitaliana.it](http://www.borsaitaliana.it)

This document contains text, data, graphics, photographs, illustrations, artwork, names, logos, trade marks, service marks and information ("Information") connected with Borsa Italiana S.p.A. ("Borsa Italiana").

All reasonable efforts have been made to ensure that the Information in this document was correct at the time of publication. However, Borsa Italiana Spa accepts no liability for decisions taken, or systems-related or other work carried out by any party based on this document. The publication of this document does not represent solicitation, by Borsa Italiana, of public saving and is not to be considered as a recommendation by Borsa Italiana as to the suitability of the investment, if any, herein described.