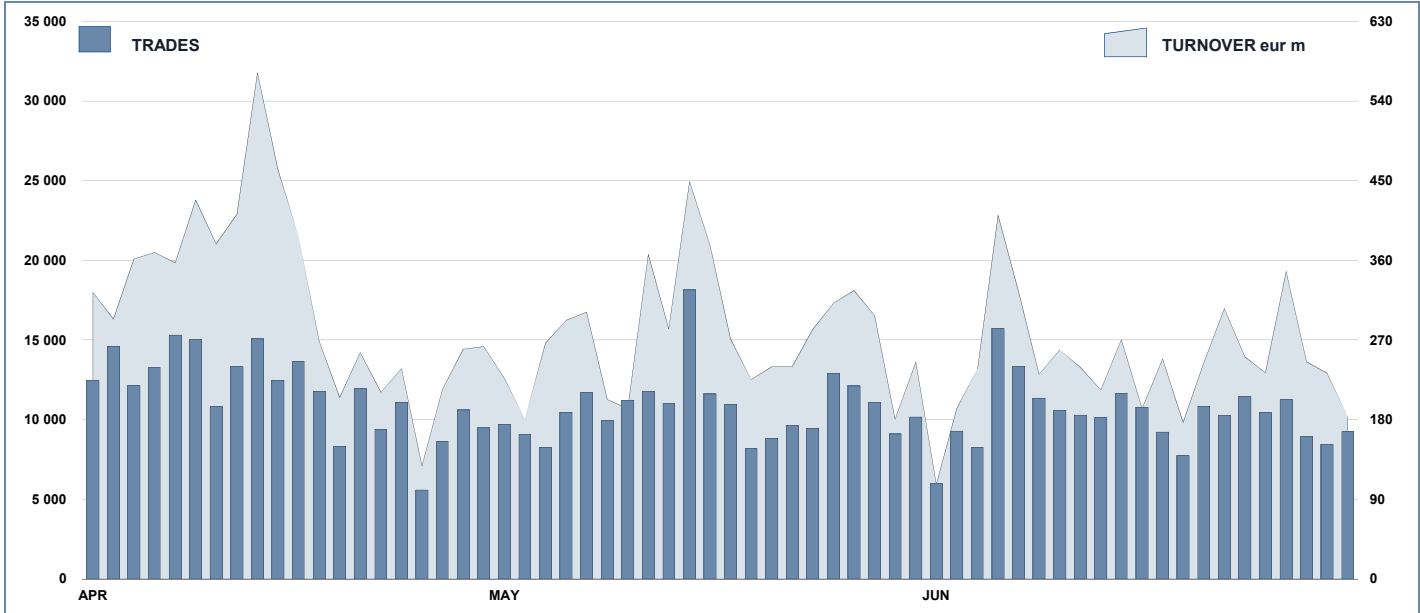




ETF Statistics

June 2014

ETFPLUS DAILY TURNOVER



MAIN INDICATORS

	LISTED INSTRUMENT				TRADING					
	LISTED END OF MONTH	MONTH NEW LISTED	AUM in MT		MAY 2014		JUNE 2014		JAN - JUN 2014	
			eur m	eur m	Trades	Turnover eur m	Trades	Turnover eur m	Trades	Turnover eur m
ETF - DEVELOPED MARKET	198	1	12 863.09	13 307.82	106 966	3 583.09	96 756	3 073.45	743 944	23 416.99
ETF - CORPORATE E GOV BOND	168	2	10 150.88	10 426.13	28 895	1 007.63	28 715	833.99	150 063	5 392.33
ETF - EMERGING MARKETS	91	0	2 860.92	2 912.30	25 695	439.50	24 756	436.92	158 187	3 053.15
ETF - STYLE	37	1	937.43	977.63	4 670	79.95	5 307	79.52	30 106	504.95
OTHERS	152	0	1 729.85	1 813.87	9 961	178.96	12 193	217.92	67 169	1 175.24
ETC/ETN	211	0	2 033.85	2 095.33	49 230	469.27	47 466	504.07	351 091	3 573.50
TOTAL	857	4	30 576.02	31 533.09	225 417	5 758.40	215 193	5 145.87	1 500 560	37 116.15

MOST TRADED IN THE MONTH BY TRADES AND RELATIVE SPREAD

Name	Alphab.	ISIN	TRADES		SPREAD	
			number	% TOT	BBO	25 000 €
1 LYXOR UCITS ETF FTSE MIB DAILY LEVERAGED	LEVMI	FR0010446658	21 616	10.0%	0.10%	0.10%
2 LYXOR UCITS ETF FTSE MIB	ETFMIB	FR0010010827	14 755	6.9%	0.04%	0.04%
3 LYXOR UCITS ETF FTSE MIB DAI DOU SHT XBR	XBRMIB	FR0010446666	14 673	6.8%	0.10%	0.11%
4 ETFs DAILY LEVERAGED NATURAL GAS	LNGA	JE0082NFTQ41	4 977	2.3%	0.31%	0.32%
5 ETFs DAILY LEVERAGED SILVER	LSIL	JE0082NFTS64	3 617	1.7%	0.16%	0.22%
6 ETFs DAILY LEVERAGED WHEAT	LWEA	JE0082NFTX18	3 251	1.5%	0.26%	0.31%
7 LYXOR UCITS ETF MSCI INDIA	INDI	FR0010361683	2 992	1.4%	0.15%	0.18%
8 BOOST NATURAL GAS 3X SHORT DAILY	3NGS	IE00876BRD76	2 965	1.4%	0.35%	0.40%
9 ETFs DAILY LEVERAGED COFFEE	LCFE	JE0082NFTD12	2 878	1.3%	0.76%	0.84%
10 ISHARES EURO STOXX 50 UCITS ETF (INC)	EUE	IE0008471009	2 798	1.3%	0.06%	0.06%

MOST TRADED IN THE MONTH BY TURNOVER AND RELATIVE SPREAD

Name	Alphab.	ISIN	TURNOVER		SPREAD	
			eur m	% TOT	BBO	25 000 €
1 LYXOR UCITS ETF FTSE MIB DAILY LEVERAGED	LEVMI	FR0010446658	526	10.2%	0.10%	0.10%
2 LYXOR UCITS ETF FTSE MIB	ETFMIB	FR0010010827	473	9.2%	0.04%	0.04%
3 LYXOR UCITS ETF FTSE MIB DAI DOU SHT XBR	XBRMIB	FR0010446666	306	5.9%	0.10%	0.11%
4 ISHARES EURO STOXX 50 UCITS ETF (INC)	EUE	IE0008471009	186	3.6%	0.06%	0.06%
5 ISHARES S&P 500 UCITS ETF (INC)	IUSA	IE0031442068	132	2.6%	0.04%	0.05%
6 ISHARES MSCI EUROPE UCITS ETF (INC)	IMEU	IE00B1Y2SC51	118	2.3%	0.09%	0.10%
7 ISHARES MSCI JAPAN EUR HEDGED UCITS ETF	IJPE	IE0084225J44	104	2.0%	0.11%	0.12%
8 ISHARES FTSE MIB UCITS ETF (INC)	IMIB	IE0081XNH568	102	2.0%	0.12%	0.12%
9 LYXOR UCITS ETF EURO STOXX 50	MSE	FR0007054358	80	1.6%	0.06%	0.06%
10 ISHARES EU HIGH YLD CORP BOND UCITS ETF	IHYG	IE00866F4759	69	1.3%	0.04%	0.05%

MOST TRADED IN THE YEAR BY TURNOVER AND RELATIVE SPREAD

Name	Alphab.	ISIN	TRADES		SPREAD	
			number	% TOT	BBO	25 000 €
1 LYXOR UCITS ETF FTSE MIB DAILY LEVERAGED	LEVMI	FR0010446658	170 261	11.3%	0.10%	0.11%
2 LYXOR UCITS ETF FTSE MIB DAI DOU SHT XBR	XBRMIB	FR0010446666	145 054	9.7%	0.10%	0.11%
3 LYXOR UCITS ETF FTSE MIB	ETFMIB	FR0010010827	124 318	8.3%	0.04%	0.05%
4 ETFs DAILY LEVERAGED NATURAL GAS	LNGA	JE0082NFTQ41	56 369	3.8%	0.34%	0.36%
5 ETFs DAILY LEVERAGED SILVER	LSIL	JE0082NFTS64	27 211	1.8%	0.20%	0.27%
6 ETFs DAILY LEVERAGED COFFEE	LCFE	JE0082NFTD12	24 602	1.6%	0.60%	0.74%
7 BOOST NATURAL GAS 3X SHORT DAILY	3NGS	IE00876BRD76	19 271	1.3%	0.72%	0.79%
8 ISHARES FTSE MIB UCITS ETF (INC)	IMIB	IE0081XNH568	16 834	1.1%	0.11%	0.11%
9 ISHARES EURO STOXX 50 UCITS ETF (INC)	EUE	IE0008471009	16 598	1.1%	0.07%	0.07%
10 ETFs DAILY LEVERAGED WHEAT	LWEA	JE0082NFTX18	16 366	1.1%	0.33%	0.39%

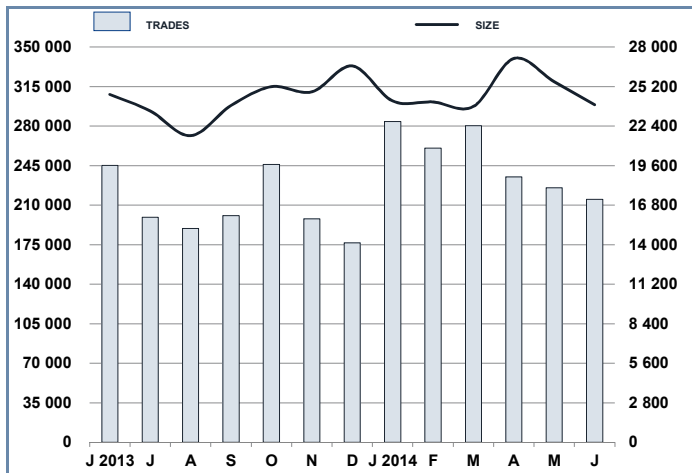
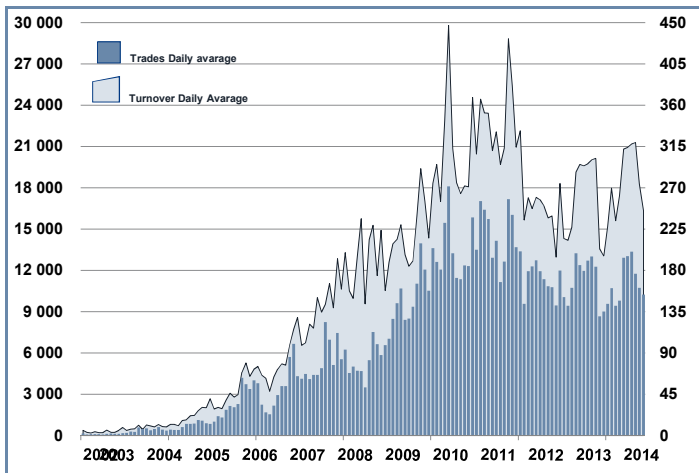
MOST TRADED IN THE YEAR BY TRADES AND RELATIVE SPREAD

Name	Alphab.	ISIN	TURNOVER		SPREAD	
			eur m	% TOT	BBO	25 000 €
1 LYXOR UCITS ETF FTSE MIB	ETFMIB	FR0010010827	4 025	10.8%	0.04%	0.05%
2 LYXOR UCITS ETF FTSE MIB DAILY LEVERAGED	LEVMI	FR0010446658	3 933	10.6%	0.10%	0.11%
3 LYXOR UCITS ETF FTSE MIB DAI DOU SHT XBR	XBRMIB	FR0010446666	3 158	8.5%	0.10%	0.11%
4 ISHARES EURO STOXX 50 UCITS ETF (INC)	EUE	IE0008471009	1 322	3.6%	0.07%	0.07%
5 ISHARES S&P 500 UCITS ETF (INC)	IUSA	IE0031442068	909	2.5%	0.05%	0.05%
6 ISHARES FTSE MIB UCITS ETF (INC)	IMIB	IE0081XNH568	784	2.1%	0.11%	0.11%
7 LYXOR UCITS ETF DAILY LEVDAX	DAXLEV	LU0252634307	581	1.6%	0.11%	0.11%
8 ISHARES MSCI JAPAN EUR HEDGED UCITS ETF	IJPE	IE0084225J44	562	1.5%	0.12%	0.13%
9 ETFs DAILY LEVERAGED NATURAL GAS	LNGA	JE0082NFTQ41	509	1.4%	0.34%	0.36%
10 LYXOR UCITS ETF EURO STOXX 50	MSE	FR0007054358	509	1.4%	0.07%	0.07%

TRADING BY SIZE OF EVOLUTION

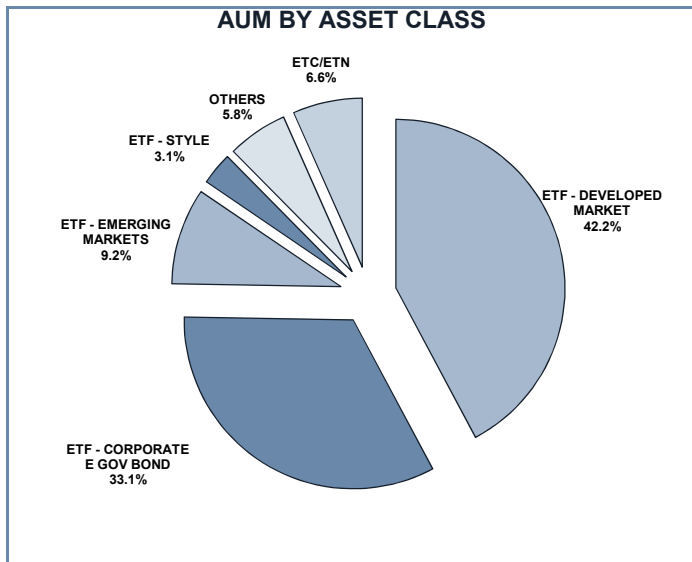
SIZE OF TURNOVER		30/05/2014		30/06/2014		YEAR 2014			
		trades	turnover €	trades	turnover €	trades	% TOT	turnover €	% TOT
-	500	16 012	4.0	15 520	3.8	103 525	6.9%	26.2	0.1%
500	1 000	15 129	11.5	14 197	10.5	100 210	6.7%	75.8	0.2%
1 000	2 000	27 547	40.4	25 177	36.3	182 306	12.1%	265.6	0.7%
2 000	3 000	21 186	52.0	19 436	47.4	135 119	9.0%	331.5	0.9%
3 000	4 000	13 907	48.2	13 860	48.0	92 961	6.2%	322.7	0.9%
4 000	5 000	12 791	57.9	12 298	55.5	85 816	5.7%	387.8	1.0%
5 000	6 000	12 085	65.8	12 822	69.6	75 155	5.0%	408.2	1.1%
6 000	7 000	6 510	42.0	6 083	39.5	43 588	2.9%	282.3	0.8%
7 000	8 000	5 207	39.1	5 795	43.4	39 078	2.6%	292.5	0.8%
8 000	9 000	5 404	45.9	5 375	45.5	36 278	2.4%	308.5	0.8%
9 000	10 000	6 602	63.2	5 574	53.2	45 196	3.0%	431.6	1.2%
10 000	15 000	20 581	244.8	20 391	242.6	134 851	9.0%	1 616.9	4.4%
15 000	20 000	10 010	175.3	9 789	170.1	79 121	5.3%	1 388.2	3.7%
20 000	25 000	8 900	197.6	8 556	189.5	55 553	3.7%	1 235.0	3.3%
25 000	30 000	5 147	140.8	5 099	139.8	40 313	2.7%	1 108.8	3.0%
30 000	35 000	4 522	146.3	4 227	136.8	29 576	2.0%	955.4	2.6%
35 000	40 000	3 747	141.2	3 877	145.4	27 423	1.8%	1 032.3	2.8%
40 000	45 000	3 606	153.3	3 529	149.5	22 402	1.5%	949.1	2.6%
45 000	50 000	2 657	126.8	2 277	107.8	18 216	1.2%	867.6	2.3%
50 000	75 000	9 241	547.3	8 250	488.8	61 975	4.1%	3 705.7	10.0%
75 000	100 000	4 010	351.2	3 503	305.7	27 060	1.8%	2 347.7	6.3%
100 000	125 000	2 852	313.7	2 748	300.3	16 000	1.1%	1 760.6	4.7%
125 000	150 000	1 293	176.0	1 180	161.4	8 514	0.6%	1 166.1	3.1%
150 000		6 471	2 574.0	5 630	2 155.2	40 324	2.7%	15 850.2	42.7%
TOTAL		225 417	5 758.4	215 193	5 145.9	1 500 560		37 116.2	

TRADING EVOLUTION



FOCUS

MONTH	INSTRUMENT WITH HIGHEST TURNOVER		INSTRUMENT WITH HIGHEST TRADES NUMBER	
	ALPHA CODE	EUR	ALPHA CODE	NUMBER
JUNE 2013	XBRMIB	790 157 178	LEVMIB	38 661
JULY	XBRMIB	506 697 076	LEVMIB	26 747
AUGUST	XBRMIB	488 140 027	XBRMIB	28 679
SEPTEMBER	XBRMIB	568 051 337	XBRMIB	30 344
OCTOBER	LEVMIB	902 253 269	XBRMIB	34 268
NOVEMBER	LEVMIB	567 616 373	LEVMIB	25 356
DECEMBER	LEVMIB	444 407 753	LEVMIB	21 559
JANUARY 2014	ETFMIB	805 036 514	LEVMIB	35 378
FEBRUARY	ETFMIB	712 591 390	LEVMIB	29 371
MARCH	ETFMIB	823 061 111	LEVMIB	28 956
APRIL	LEVMIB	703 753 099	LEVMIB	28 821
MAY	LEVMIB	645 555 984	LEVMIB	26 119
JUNE	LEVMIB	526 244 966	LEVMIB	21 616



SPREAD

	SPREAD							
	BBO		5 000 €		15 000 €		25 000 €	
	SPREAD	%OBSER	SPREAD	%OBSER	SPREAD	%OBSER	SPREAD	%OBSER
ETF - DEVELOPED MARKET	0.12%	100.00%	0.12%	100.00%	0.12%	99.99%	0.13%	99.96%
EQUITY ITALY	0.09%	100.00%	0.09%	100.00%	0.10%	99.95%	0.10%	99.81%
EQUITY EUROPE - REGIONAL	0.11%	100.00%	0.11%	100.00%	0.11%	100.00%	0.11%	99.99%
EQUITY EUROPE - SINGLE COUNTRY	0.17%	100.00%	0.18%	99.99%	0.18%	99.98%	0.19%	99.95%
EQUITY WORLD	0.12%	100.00%	0.12%	100.00%	0.13%	100.00%	0.13%	99.99%
EQUITY NORTH AMERICA	0.11%	100.00%	0.11%	100.00%	0.11%	100.00%	0.11%	100.00%
EQUITY PACIFIC	0.17%	100.00%	0.17%	100.00%	0.18%	100.00%	0.18%	99.99%
EQUITY SHORT (DEVELOPED)	0.15%	100.00%	0.16%	100.00%	0.16%	100.00%	0.16%	100.00%
LEVERAGED LONG	0.13%	100.00%	0.13%	100.00%	0.14%	100.00%	0.14%	100.00%
LEVERAGED SHORT	0.13%	100.00%	0.14%	100.00%	0.14%	100.00%	0.14%	100.00%
ETF - EMERGING MARKETS	0.26%	100.00%	0.27%	99.99%	0.28%	99.95%	0.29%	99.88%
EQUITY EMERGING - AFRICA/MIDDLE EAST	0.50%	100.00%	0.52%	99.99%	0.57%	99.88%	0.60%	99.47%
EQUITY EMERGING - ASIA	0.28%	100.00%	0.29%	99.99%	0.31%	99.96%	0.32%	99.85%
EQUITY EMERGING - CENTRE/SOUTH AMERICA	0.38%	100.00%	0.39%	99.98%	0.41%	99.90%	0.43%	99.82%
EQUITY EMERGING - EAST EUROPE	0.29%	100.00%	0.30%	99.99%	0.31%	99.94%	0.32%	99.91%
EQUITY EMERGING - WORLD	0.17%	100.00%	0.18%	99.99%	0.18%	99.97%	0.19%	99.95%
EQUITY SHORT (EMERGING)	0.60%	100.00%	0.61%	100.00%	0.61%	100.00%	0.61%	100.00%
ETF - CORPORATE GOVERNMENT BONDS	0.12%	100.00%	0.12%	99.99%	0.13%	99.98%	0.13%	99.83%
INFLATION	0.22%	100.00%	0.23%	100.00%	0.24%	99.99%	0.25%	99.31%
LIQUIDITY	0.10%	100.00%	0.11%	100.00%	0.12%	100.00%	0.12%	100.00%
CORPORATE BOND	0.09%	100.00%	0.10%	100.00%	0.10%	99.99%	0.10%	99.93%
AGGREGATE BOND	0.23%	100.00%	0.23%	99.87%	0.25%	99.80%	0.25%	99.79%
BOND SHORT	0.18%	100.00%	0.18%	99.98%	0.18%	99.98%	0.13%	98.64%
BOND LEVERAGED LONG	0.13%	100.00%	0.13%	100.00%	0.13%	100.00%	0.14%	100.00%
BOND LEVERAGED SHORT	0.10%	100.00%	0.10%	100.00%	0.11%	100.00%	0.11%	99.96%
GOVERNMENT BONDS - EMERGING	0.22%	100.00%	0.23%	100.00%	0.24%	99.96%	0.26%	99.54%
GOVERNMENT BONDS - EURO	0.09%	100.00%	0.09%	100.00%	0.10%	99.99%	0.10%	99.93%
GOVERNMENT BONDS - ITALY	0.23%	100.00%	0.24%	99.84%	0.25%	99.63%	0.24%	98.70%
GOVERNMENT BONDS - WORLD	0.35%	100.00%	0.35%	100.00%	0.37%	99.99%	0.38%	99.99%
GOVERNMENT BONDS - EX EURO	0.07%	100.00%	0.07%	99.99%	0.07%	99.99%	0.07%	99.98%
ETF - STYLE	0.29%	100.00%	0.29%	100.00%	0.30%	99.99%	0.31%	99.97%
EQUITY STYLE (DEVELOPED)	0.28%	100.00%	0.29%	100.00%	0.30%	99.99%	0.30%	99.97%
EQUITY STYLE (EMERGING)	0.44%	100.00%	0.47%	100.00%	0.49%	99.97%	0.51%	99.95%
ETF - OTHERS	0.31%	100.00%	0.32%	99.97%	0.33%	99.88%	0.34%	99.83%
EQUITY SECTORS (DEVELOPED)	0.28%	100.00%	0.28%	100.00%	0.29%	99.97%	0.29%	99.95%
EQUITY SECTORS (EMERGING)	1.01%	100.00%	1.06%	99.93%	1.08%	99.91%	1.10%	99.88%
EQUITY THEMATIC	0.55%	100.00%	0.58%	99.84%	0.61%	99.52%	0.63%	99.32%
COMMODITIES	0.18%	100.00%	0.18%	99.96%	0.18%	99.96%	0.19%	99.96%
CREDIT INDICES	0.20%	100.00%	0.20%	99.74%	0.20%	99.74%	0.20%	99.74%
REAL ESTATE	0.29%	100.00%	0.30%	99.97%	0.32%	99.92%	0.32%	99.88%
LEVERAGED CREDIT INDICES	0.36%	100.00%	0.36%	100.00%	0.37%	100.00%	0.37%	100.00%
VOLATILITY INDICES	1.14%	100.00%	1.22%	99.98%	1.39%	97.90%	1.53%	95.75%
CURRENCIES INDICES	0.12%	100.00%	0.12%	100.00%	0.12%	100.00%	0.12%	100.00%
ETF	0.15%	100.00%	0.15%	99.99%	0.16%	99.97%	0.16%	99.90%

Data obtained from 1 minute snapshots of the trading book (5 levels) during trading days of the relevant month.

Market Spread: means the difference between bid and ask prices divided by the mid quote at which it was possible to buy and sell simultaneously the relevant amount.

% Obser: means the percentage of observations at which it would be possible to buy and sell simultaneously the relevant amount.

The average showed is the weighted average on AUM deposited in Monte Titoli is used: it's the average calculated taking into account the AUM (asset under management) deposited in Monte Titoli.

News

During June 2014, the Asset Under Management set a new historical record reaching, at the of the month, EUR 31.533 bn (EUR 29.438 bn for ETFs and EUR 2.095 for ETCs/ETNs) with a grow of 38.20% vs end of June 2013. In June, Borsa Italiana ETFplus market welcomed 12 new ETFs:

2 iShares ETFs respectively on Eurostoxx 50 ex financials and on MSCI Japan Small Cap

2 UBS ETFs respectively on Euro Corporate bond with short maturity index and on a EUR hedged US Corporate Bond Index

These new instruments bring to 857 the number of products listed on ETFplus market (646 ETFs and 211 ETCs/ETNs).

Markets Analysis

Piazza degli Affari, 6 - 20123 Milano
T +39 02 724261 | Fax +39 02 8646.4323
e-mail: markets_analysis@borsaitaliana.it
www.borsaitaliana.it



London
Stock Exchange Group

This document contains text, data, graphics, photographs, illustrations, artwork, names, logos, trade marks, service marks and information ("Information") connected with Borsa Italiana S.p.A. ("Borsa Italiana").

All reasonable efforts have been made to ensure that the Information in this document was correct at the time of publication. However, Borsa Italiana Spa accepts no liability for decisions taken, or systems-related or other work carried out by any party based on this document. The publication of this document does not represent solicitation, by Borsa Italiana, of public saving and is not to be considered as a recommendation by Borsa Italiana as to the suitability of the investment, if a herein described.