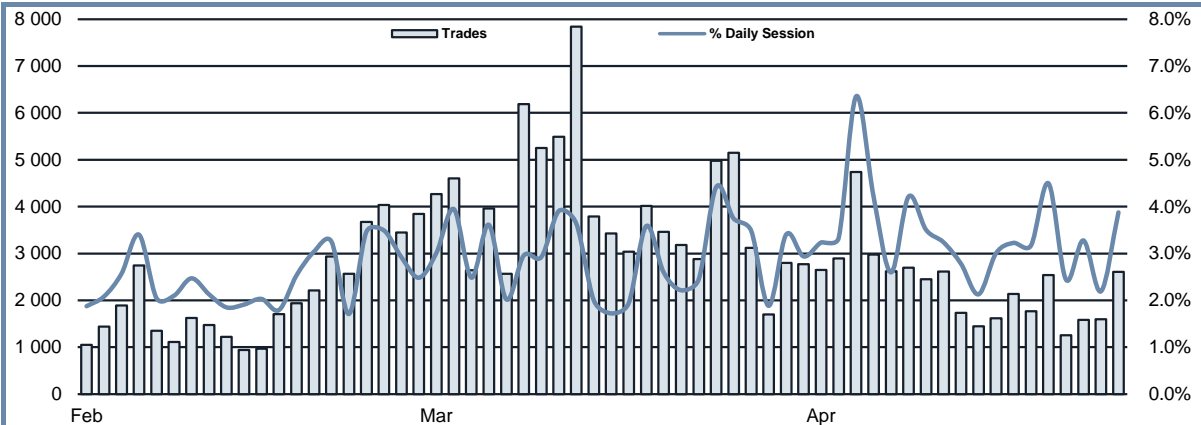


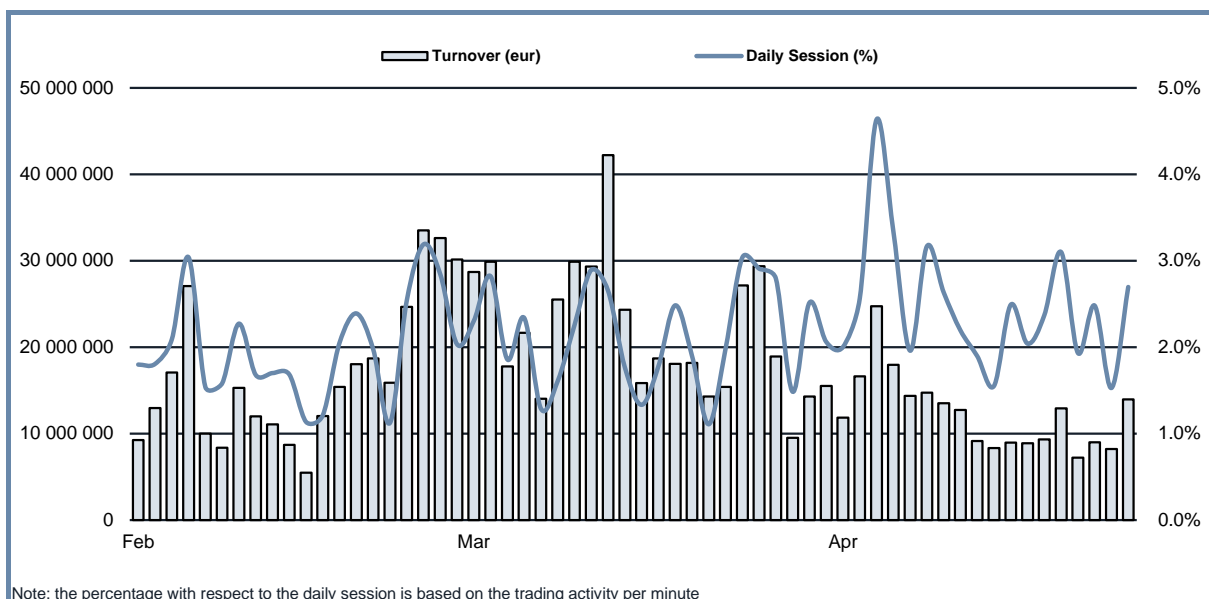
**TAH Statistics**
**APRIL 2020**
**TRADING AFTER HOURS - TOTAL TRADES**


Note: the percentage with respect to the daily session is based on the trading activity per minute

**TRADING ACTIVITY**

	FTSEMIB SHARES		OTHER SHARES		TOTAL	
	TRADES	TURNOVER eur	TRADES	TURNOVER eur	TRADES	TURNOVER eur
<b>MONTHLY TOTAL</b>						
FEBRUARY - 2020	38 537	325 159 693	3 622	12 843 092	42 159	338 002 785
MARCH - 2020	81 600	463 836 081	5 523	14 597 168	87 123	478 433 249
APRIL - 2020	39 959	215 864 693	1 968	6 474 490	41 927	222 339 183
<b>TOTAL 2018</b>	<b>324 160</b>	<b>2 967 978 167</b>	<b>15 216</b>	<b>38 805 176</b>	<b>339 376</b>	<b>3 006 783 343</b>
<b>TOTAL 2019</b>	<b>225 363</b>	<b>1 971 766 906</b>	<b>9 419</b>	<b>25 639 436</b>	<b>234 782</b>	<b>1 997 406 343</b>
<b>TOTAL 2020</b>	<b>182 435</b>	<b>1 203 138 756</b>	<b>12 916</b>	<b>39 415 961</b>	<b>195 351</b>	<b>1 242 554 717</b>
<b>DAILY AVERAGE</b>						
FEBRUARY - 2020	1 927	16 257 985	181	642 155	2 108	16 900 139
MARCH - 2020	3 709	21 083 458	251	663 508	3 960	21 746 966
APRIL - 2020	2 220	11 992 483	109	359 694	2 207	11 702 062
<b>TOTAL 2018</b>	<b>1 536</b>	<b>14 066 247</b>	<b>72</b>	<b>183 911</b>	<b>1 608</b>	<b>14 250 158</b>
<b>TOTAL 2019</b>	<b>1 024</b>	<b>8 962 577</b>	<b>43</b>	<b>116 543</b>	<b>1 067</b>	<b>9 079 120</b>
<b>TOTAL 2020</b>	<b>2 309</b>	<b>15 229 605</b>	<b>163</b>	<b>498 936</b>	<b>2 473</b>	<b>15 728 541</b>
<b>DAILY FIGURES</b>						
01/04/2020	2 573	11 587 655	78	257 893	2 651	11 845 548
02/04/2020	2 789	16 320 548	107	280 337	2 896	16 600 885
03/04/2020	4 630	24 352 369	110	364 821	4 740	24 717 190
06/04/2020	2 857	17 523 069	120	430 633	2 977	17 953 702
07/04/2020	2 475	13 851 139	144	517 238	2 619	14 368 377
08/04/2020	2 589	14 470 046	106	267 752	2 695	14 737 798
14/04/2020	2 343	13 206 978	106	302 778	2 449	13 509 756
15/04/2020	2 505	12 448 550	112	289 291	2 617	12 737 841
16/04/2020	1 596	8 487 617	140	652 593	1 736	9 140 210
17/04/2020	1 368	8 005 627	79	306 797	1 447	8 312 424
20/04/2020	1 540	8 747 684	80	206 365	1 620	8 954 049
21/04/2020	2 025	8 508 988	109	383 322	2 134	8 892 310
22/04/2020	1 706	9 080 416	61	222 740	1 767	9 303 156
23/04/2020	2 378	12 467 170	164	442 433	2 542	12 909 603
24/04/2020	1 186	7 072 667	67	148 700	1 253	7 221 367
27/04/2020	1 495	8 583 272	87	407 468	1 582	8 990 739
28/04/2020	1 491	7 823 707	105	385 344	1 596	8 209 050
29/04/2020	2 413	13 327 191	193	607 985	2 606	13 935 177

## TRADING AFTER HOURS - DAILY TURNOVER



## MOST TRADED SHARES IN THE MONTH

## TRADES

SHARES	TRADES		TURNOVER eur m
	number	% TOT of TAH	
1 INTESA SANPAOLO	6 318	15.1%	36.89
2 FIAT CHRYSLER AUTOMOBILES	4 805	11.5%	23.79
3 UNICREDIT	3 807	9.1%	21.38
4 ENI	3 595	8.6%	21.23
5 STMICROELECTRONICS	3 319	7.9%	30.71
6 ENEL	1 447	3.5%	8.70
7 TENARIS	1 393	3.3%	7.06
8 FERRARI	1 349	3.2%	14.12
9 SAIPEM	1 222	2.9%	4.12
10 BANCO BPM	1 212	2.9%	4.41
11 LEONARDO	1 133	2.7%	3.77
12 DIASORIN	1 110	2.6%	5.54
13 TELECOM ITALIA	939	2.2%	3.70
14 POSTE ITALIANE	888	2.1%	3.56
15 MEOBANCA	847	2.0%	3.23
16 AZIMUT HOLDING	782	1.9%	3.22
17 ATLANTIA	751	1.8%	2.37
18 GENERALI	666	1.6%	2.63
19 CNH INDUSTRIAL	629	1.5%	3.25
20 FINECOBANK	555	1.3%	2.09

## TURNOVER

SHARES	TURNOVER		TRADES number
	eur m	% TOT of TAH	
1 INTESA SANPAOLO	36.89	16.6%	6 318
2 STMICROELECTRONICS	30.71	13.8%	3 319
3 FIAT CHRYSLER AUTOMOBILES	23.79	10.7%	4 805
4 UNICREDIT	21.38	9.6%	3 807
5 ENI	21.23	9.5%	3 595
6 FERRARI	14.12	6.3%	1 349
7 ENEL	8.70	3.9%	1 447
8 TENARIS	7.06	3.2%	1 393
9 DIASORIN	5.54	2.5%	1 110
10 BANCO BPM	4.41	2.0%	1 212
11 SAIPEM	4.12	1.9%	1 222
12 LEONARDO	3.77	1.7%	1 133
13 TELECOM ITALIA	3.70	1.7%	939
14 POSTE ITALIANE	3.56	1.6%	888
15 CNH INDUSTRIAL	3.25	1.5%	629
16 MEOBANCA	3.23	1.5%	847
17 AZIMUT HOLDING	3.22	1.4%	782
18 GENERALI	2.63	1.2%	666
19 ATLANTIA	2.37	1.1%	751
20 FINECOBANK	2.09	0.9%	555

Markets Analysis  
Piazza degli Affari, 6 - 20123 Milano  
T +39 02 724261 | Fax +39 02 8646.4323  
e-mail: markets\_analysis@borsaitaliana.it  
www.borsaitaliana.it

This document contains text, data, graphics, photographs, illustrations, artwork, names, logos, trade marks, service marks and information ("Information") connected with Borsa Italiana S.p.A. ("Borsa Italiana").

All reasonable efforts have been made to ensure that the Information in this document was correct at the time of publication. However, Borsa Italiana Spa accepts no liability for decisions taken, or systems-related or other work carried out by any party based on this document. The publication of this document does not represent solicitation, by Borsa Italiana, of public saving and is not to be considered as a recommendation by Borsa Italiana as to the suitability of the investment, if any, herein described.

© April 2020 Borsa Italiana S.p.A. All rights reserved.



**London**  
Stock Exchange Group