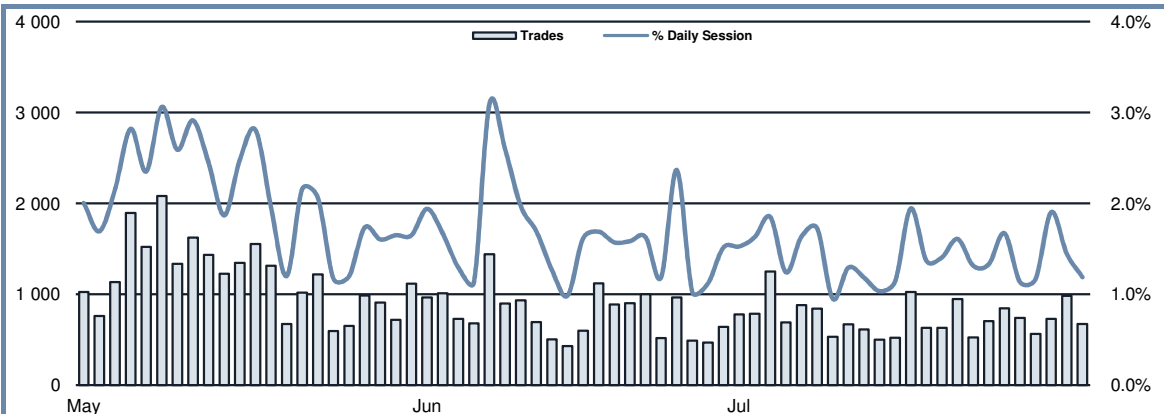


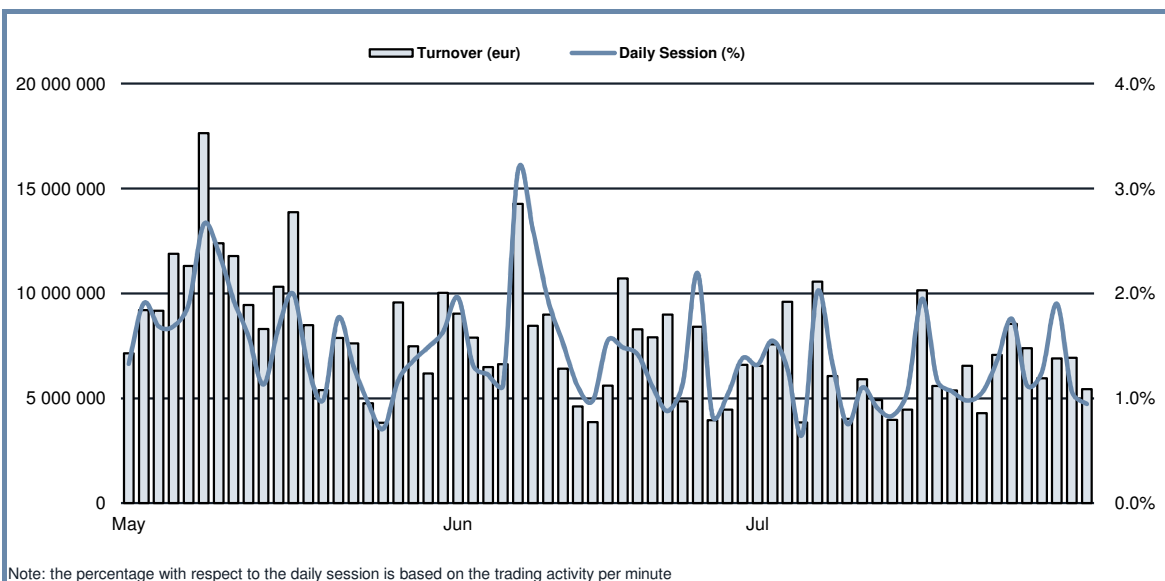
TAH Statistics
JULY 2019
TRADING AFTER HOURS - TOTAL TRADES


Note: the percentage with respect to the daily session is based on the trading activity per minute

TRADING ACTIVITY

	FTSEMIB SHARES		OTHER SHARES		TOTAL	
	TRADES	TURNOVER eur	TRADES	TURNOVER eur	TRADES	TURNOVER eur
MONTHLY TOTAL						
MAY - 2019	25 425	202 117 886	687	1 567 095	26 112	203 684 981
JUNE - 2019	15 137	144 501 174	717	1 939 105	15 854	146 440 280
JULY - 2019	15 890	144 764 796	1 148	2 858 169	17 038	147 622 965
TOTAL 2017	328 461	2 955 214 041	16 261	53 763 273	344 722	3 008 977 314
TOTAL 2018	324 160	2 967 978 167	15 216	38 805 176	339 376	3 006 783 343
TOTAL 2019	134 804	1 179 348 333	5 877	14 047 483	140 681	1 193 395 816
DAILY AVERAGE						
MAY - 2019	1 156	9 187 177	31	71 232	1 187	9 258 408
JUNE - 2019	757	7 225 059	36	96 955	793	7 322 014
JULY - 2019	691	6 294 122	50	124 268	741	6 418 390
TOTAL 2017	1 618	14 557 705	80	264 844	1 698	14 822 548
TOTAL 2018	1 536	14 066 247	72	183 911	1 608	14 250 158
TOTAL 2019	949	8 305 270	41	98 926	991	8 404 196
DAILY FIGURES						
01/07/2019	751	6 512 725	25	36 000	776	6 548 726
02/07/2019	756	7 526 473	27	48 054	783	7 574 526
03/07/2019	1 197	9 488 974	51	108 269	1 248	9 597 243
04/07/2019	547	3 522 660	144	323 074	691	3 845 734
05/07/2019	782	10 323 169	98	243 339	880	10 566 508
08/07/2019	790	5 958 256	52	102 740	842	6 060 995
09/07/2019	484	3 873 377	48	141 790	532	4 015 168
10/07/2019	616	5 767 296	53	145 625	669	5 912 921
11/07/2019	546	4 664 539	65	246 638	611	4 911 177
12/07/2019	433	3 793 747	66	179 033	499	3 972 780
15/07/2019	476	4 383 785	45	77 233	521	4 461 018
16/07/2019	974	10 060 821	49	96 047	1 023	10 156 868
17/07/2019	591	5 478 782	38	111 021	629	5 589 803
18/07/2019	575	5 246 261	55	128 537	630	5 374 798
19/07/2019	899	6 391 183	49	157 923	948	6 549 106
22/07/2019	489	4 192 793	36	93 006	525	4 285 799
23/07/2019	679	7 001 324	23	64 893	702	7 066 217
24/07/2019	767	8 326 817	79	214 430	846	8 541 248
25/07/2019	714	7 323 927	24	63 821	738	7 387 749
26/07/2019	549	5 915 858	14	31 649	563	5 947 507
29/07/2019	712	6 888 831	16	16 651	728	6 905 482
30/07/2019	946	6 846 472	36	77 201	982	6 923 673
31/07/2019	617	5 276 725	55	151 194	672	5 427 919

TRADING AFTER HOURS - DAILY TURNOVER



MOST TRADED SHARES IN THE MONTH

TRADES				TURNOVER			
SHARES	TRADES		TURNOVER	SHARES	TURNOVER		TRADES
	number	% TOT of TAH			% CUM	eur m	
1 STMICROELECTRONICS	2 346	13.8%	0.14	27.05	18.3%	18.3%	2 346
2 FIAT CHRYSLER AUTOMOBILES	1 841	10.8%	0.25	21.79	14.8%	33.1%	1 841
3 INTESA SANPAOLO	1 652	9.7%	0.34	18.19	12.3%	45.4%	1 652
4 UNICREDIT	1 467	8.6%	0.43	13.59	9.9%	55.4%	1 446
5 TENARIS	1 446	8.5%	0.51	14.69	9.2%	64.6%	1 467
6 ENEL	761	4.5%	0.56	6.46	6.2%	70.7%	534
7 FINECOBANK	686	4.0%	0.60	3.56	5.9%	76.6%	650
8 BANCO BPM	653	3.8%	0.64	2.91	4.4%	81.0%	761
9 ENI	650	3.8%	0.68	8.65	2.7%	83.7%	552
10 BANCA MONTE PASCHI SIENA	614	3.6%	0.71	1.51	2.4%	86.1%	686
11 SAIPEM	552	3.2%	0.74	3.99	2.0%	88.1%	653
12 FERRARI	534	3.1%	0.77	9.12	1.2%	89.3%	443
13 TELECOM ITALIA	443	2.6%	0.80	1.78	1.1%	90.4%	394
14 UBI BANCA	394	2.3%	0.82	1.69	1.0%	91.4%	614
15 LEONARDO	378	2.2%	0.85	1.30	0.9%	92.4%	259
16 AZIMUT HOLDING	259	1.5%	0.86	1.40	0.9%	93.3%	378
17 PIRELLI & C	252	1.5%	0.88	0.85	0.8%	94.1%	232
18 ATLANTIA	232	1.4%	0.89	1.17	0.8%	94.9%	153
19 GENERALI	173	1.0%	0.90	1.16	0.8%	95.6%	173
20 SALINI IMPREGILO	156	0.9%	0.91	0.35	0.6%	96.2%	252

Markets Analysis
 Piazza degli Affari, 6 - 20123 Milano
 T +39 02 724261 | Fax +39 02 8646.4323
 e-mail: markets_analysis@borsaitaliana.it
 www.borsaitaliana.it

This document contains text, data, graphics, photographs, illustrations, artwork, names, logos, trade marks, service marks and information ("Information") connected with Borsa Italiana S.p.A. ("Borsa Italiana").

All reasonable efforts have been made to ensure that the Information in this document was correct at the time of publication. However, Borsa Italiana Spa accepts no liability for decisions taken, or systems-related or other work carried out by any party based on this document. The publication of this document does not represent solicitation, by Borsa Italiana, of public saving and is not to be considered as a recommendation by Borsa Italiana as to the suitability of the investment, if any, herein described.

© July 2019 Borsa Italiana S.p.A. All rights reserved.



London
 Stock Exchange Group