

SECTORAL EVOLUTION

Macrosector	Sector	INDICES				CAPITALISATION						
		28 FEB 2007	30 MAR 2007	VAR. % MoM	VAR. % 2006 end	29 DEC 2006		28 FEB 2007		30 MAR 2007		
		EUR ML	% TOT.	EUR ML	% TOT.	EUR ML	% TOT.	EUR ML	% TOT.	EUR ML	% TOT.	
- MIB SECTORAL (BASE 30.12.1994 = 1000)												
Industrial	Food	1 044		1 055	1.05%	1.34%	9 092	1.2%	9 122	1.2%	9 234	1.2%
Industrial	Auto	910		981	7.80%	30.45%	21 456	2.8%	25 996	3.3%	28 022	3.5%
Industrial	Paper	460		488	6.09%	19.61%	140	0.0%	158	0.0%	167	0.0%
Industrial	Chemical	1 244		1 263	1.53%	8.41%	8 148	1.0%	8 702	1.1%	8 851	1.1%
Industrial	Construction	3 800		3 996	5.16%	13.62%	13 621	1.7%	14 689	1.9%	15 454	1.9%
Industrial	Electronics	1 945		2 041	4.94%	11.59%	17 142	2.2%	18 242	2.3%	19 120	2.4%
Industrial	Machinery-Mechan.	6 375		6 832	7.17%	13.75%	11 990	1.5%	12 753	1.6%	13 668	1.7%
Industrial	Miscellaneous	2 527		2 534	0.28%	-2.99%	1 415	0.2%	1 397	0.2%	1 400	0.2%
Industrial	Mineral-Metal-Oil	3 142		3 267	3.98%	-3.66%	108 757	14.0%	100 755	12.9%	104 782	13.1%
Industrial	Textiles-Clothing	3 478		3 521	1.24%	-1.38%	27 311	3.5%	27 370	3.5%	27 703	3.5%
Services	Distribution	1 680		1 783	6.13%	23.39%	1 101	0.1%	1 281	0.2%	1 359	0.2%
Services	Media	2 147		2 084	-2.93%	-2.62%	24 349	3.1%	24 435	3.1%	23 719	3.0%
Services	Public Utilities	4 363		4 374	0.25%	0.95%	131 814	16.9%	133 855	17.1%	134 225	16.8%
Services	Services Miscellaneous	4 174		4 185	0.26%	-4.67%	5 049	0.6%	4 946	0.6%	4 959	0.6%
Services	Transp.-Tourism	7 025		7 341	4.50%	6.36%	22 701	2.9%	23 113	2.9%	24 153	3.0%
Financial	Insurance	2 213		2 192	-0.95%	-2.58%	73 728	9.5%	72 535	9.3%	71 512	8.9%
Financial	Banking	3 980		4 064	2.11%	1.96%	247 343	31.8%	248 384	31.7%	253 611	31.7%
Financial	Holding Misc.	8 073		8 834	9.43%	8.55%	366	0.0%	773	0.1%	845	0.1%
Financial	Holding Cies	2 764		2 906	5.14%	12.85%	20 080	2.6%	21 615	2.8%	22 727	2.8%
Financial	Real Estate	4 494		4 552	1.29%	3.71%	10 536	1.4%	10 923	1.4%	11 070	1.4%
Financial	Financial Services	4 500		4 864	8.09%	8.50%	1 891	0.2%	1 898	0.2%	2 052	0.3%
Industrial		2 462		2 566	4.22%	4.22%	219 072	28.1%	219 184	28.0%	228 403	28.5%
Services		4 393		4 411	0.41%	1.12%	185 015	23.8%	187 629	23.9%	188 415	23.5%
Financial		3 078		3 130	1.69%	1.76%	353 944	45.5%	356 128	45.4%	361 818	45.2%
Mta Total	(Domestic shares)						758 031	97.4%	762 942	97.3%	778 635	97.2%
- TechSTAR VWAP Index												
Mtax Total	(Domestic shares)	12 255		13 121	7.07%	8.97%	10 140	1.3%	9 826	1.3%	11 025	1.4%
- MEX Index												
Mercato Expandi Total		12 477		12 510	0.26%	6.68%	10 330	1.3%	11 030	1.4%	11 260	1.4%
Total	(Domestic shares)						778 501	100.0%	783 797	100.0%	800 920	100.0%

S&P/MIB SHARES (BASKET UPDATED AS FROM 19.03.2007)

	PRICE (eur)			CAPITALISATION (eur m)		TURNOVER (eur m)	
	30 MAR 2007	VAR % MOM	VAR. % 2006 END	28 FEB 2007	30 MAR 2007	MAR 2007	JAN-MAR 2007
Aem	2.6880	5.7%	6.3%	4 579.3	4 838.5	456.1	1 434.7
Alitalia	0.9441	-2.8%	-9.0%	1 346.6	1 309.2	318.9	2 197.2
Alleanza	9.5470	-1.5%	-5.6%	8 202.6	8 081.7	1 073.0	2 763.8
Autogrill	14.3580	5.0%	3.2%	3 480.2	3 652.7	554.3	1 370.3
Autostrade	23.9900	6.5%	10.0%	12 880.7	13 715.4	1 484.4	3 728.9
Banca Monte Paschi Siena	4.7010	-3.7%	-4.2%	11 953.5	11 510.4	1 201.0	3 188.0
Banca Pop. Italiana - Banca Pop. Lodi	11.7010	2.7%	8.4%	7 770.7	7 984.3	1 837.1	4 953.8
Banca Popolare Milano	11.5700	-1.8%	-11.9%	4 889.1	4 801.9	1 042.3	2 654.0
Banche Popolari Unite	22.1900	3.6%	6.8%	7 378.8	7 644.1	1 361.2	3 432.9
Banco Popolare Verona e Novara	23.2700	2.0%	7.2%	8 561.2	8 733.9	2 570.0	6 417.7
Bulgari	10.8610	0.5%	1.0%	3 237.8	3 253.7	433.6	1 075.8
Buzzi Unicem	22.8100	3.0%	6.3%	3 647.5	3 761.9	243.5	709.6
Capitalia	6.7570	3.1%	-5.5%	17 022.9	17 543.7	4 057.5	10 690.7
Enel	8.0300	1.6%	2.6%	48 845.1	49 634.3	9 092.4	23 664.5
Eni	24.3300	3.8%	-4.7%	93 885.6	97 450.4	14 788.0	38 252.5
Fastweb	47.8300	20.9%	10.3%	3 145.3	3 802.9	3 038.8	7 206.5
Fiat	18.9810	6.9%	31.6%	19 400.5	20 731.9	15 703.3	35 057.3
Finmeccanica	22.4500	1.8%	9.4%	9 374.3	9 540.5	1 423.5	3 640.2
Fondiarìa - Sai	34.4500	-0.5%	-5.0%	4 657.3	4 308.8	457.0	1 376.0
Generali	31.9200	-1.6%	-4.3%	41 451.0	40 802.9	7 299.6	17 468.8
Gruppo Editoriale L'Espresso	3.9770	0.4%	-3.1%	1 721.3	1 727.3	143.5	491.2
Intesa Sanpaolo	5.6820	2.7%	-1.8%	65 525.6	67 326.7	11 317.5	30 262.0
Italcementi	22.4000	-0.9%	4.7%	4 002.9	3 967.4	454.7	1 202.8
Lottomatica	29.9900	0.7%	-4.8%	4 510.2	4 543.9	631.0	2 284.4
Luxottica	23.9400	0.8%	2.6%	10 932.7	11 021.5	765.3	1 781.8
Mediaset	8.1340	-7.6%	-9.7%	10 398.3	9 608.1	1 772.8	3 822.2
Mediobanca	16.6740	-1.1%	-6.3%	13 780.0	13 632.0	1 760.8	4 566.9
Mediolanum	6.1030	-2.5%	-1.3%	4 561.8	4 448.1	715.9	2 209.3
Mondadori Editore	7.8320	-1.0%	-0.6%	2 053.1	2 031.9	201.4	547.6
Parmalat	3.2110	0.4%	-1.0%	5 249.5	5 292.8	680.2	2 201.3
Pirelli & C	0.8262	-2.5%	9.1%	4 436.1	4 323.6	1 557.7	3 372.7
Saipem	21.8900	6.5%	11.1%	9 067.7	9 659.0	1 936.2	6 303.3
Seat Pagine Gialle	0.4624	-0.6%	2.3%	3 816.4	3 793.6	420.5	1 200.8
Snam Rete Gas	4.7500	5.3%	10.7%	8 821.7	9 291.4	904.1	2 316.3
STMicroelectronics (foreign)	14.4600	-1.0%	2.9%	13 287.4	13 160.9	2 812.9	9 247.1
Telecom Italia	2.1400	-6.9%	-6.7%	30 762.3	28 634.8	9 013.2	23 133.5
Tenaris (foreign)	17.3660	0.7%	-8.0%	20 367.8	20 501.2	3 594.0	12 776.4
Terna	2.7790	4.9%	8.6%	5 296.0	5 558.0	819.9	2 068.7
Unicredit Italiano	7.1130	1.5%	6.9%	73 027.7	74 111.3	15 394.0	37 260.7
Unipol	2.8980	0.2%	6.2%	4 222.4	4 232.6	300.0	1 209.6



**MOST TRADED SHARES
IN MARCH 2007**

Shares	Mkt	Segm.	Turnover %	TOT
			eur m	
Fiat	MTA	BC	15 703.3	11.2%
Unicredito Italiano	MTA	BC	15 394.0	10.9%
Eni	MTA	BC	14 788.0	10.5%
Intesa Sanpaolo	MTA	BC	11 317.5	8.0%
Enel	MTA	BC	9 092.4	6.5%
Telecom Italia	MTA	BC	9 013.2	6.4%
Generali	MTA	BC	7 299.6	5.2%
Capitalia	MTA	BC	4 057.5	2.9%
Tenaris	MTA	BC	3 594.0	2.6%
Fastweb	MTAX	BC	3 038.8	2.2%

**SHARES WITH BEST PERFORMANCE
IN MARCH 2007**

Shares	Mkt	Segm.	Var. % MoM	Var. % 2006 end
Olidata	MTA	STD1	104.7%	193.3%
Exprivia	MTAX	STD1	69.5%	207.8%
Fidia	MTAX	ST	69.3%	200.8%
Montefibre	MTA	STD1	58.5%	76.8%
Montefibre rsp	MTA	STD1	51.7%	78.9%
Trevisan Cometal	MTA	ST	47.9%	98.9%
Beghelli	MTA	STD1	45.1%	70.4%
Lavorwash	MTA	STD1	41.6%	44.7%
Compagnia Immob. Az.	ME	ME2	38.2%	97.7%
Digital Bros	MTAX	ST	32.7%	70.8%

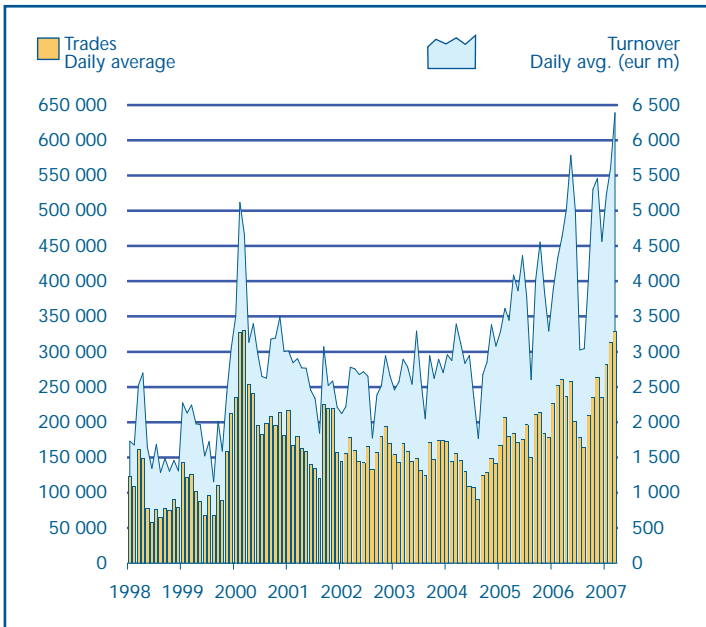
Performance is not included for shares not listed at 2006 end or unlimited suspended at March 2007 end

**SHARES WITH WORST PERFORMANCE
IN MARCH 2007**

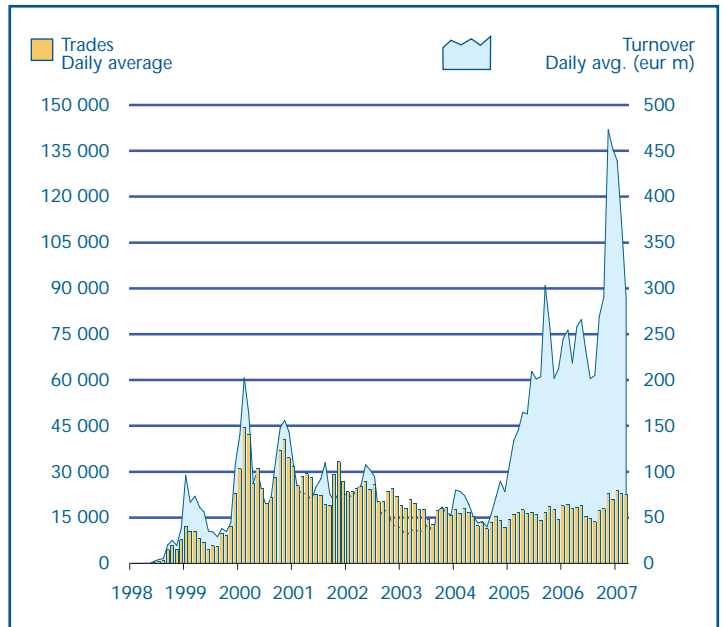
Shares	Mkt	Segm.	Var. % MoM	Var. % 2006 end
Banca Popolare Intra	MTA	STD1	-12.7%	-10.3%
Ipi	MTA	STD1	-11.4%	-16.2%
Deutsche Telekom	MTA	MTAIN	-8.7%	-10.6%
Elica	MTA	ST	-8.6%	-9.1%
Alcatel-Lucent	MTA	MTAIN	-8.6%	-19.5%
Mediaset	MTA	BC	-7.6%	-9.7%
Gabetti Property Solutions	MTA	STD1	-7.2%	-8.9%
Telecom Italia	MTA	BC	-6.9%	-6.7%
Ergo Previdenza	MTA	STD1	-6.7%	5.3%
Banca Italease	MTA	BC	-5.9%	10.3%

Performance is not included for shares not listed at 2006 end or unlimited suspended at March 2007 end

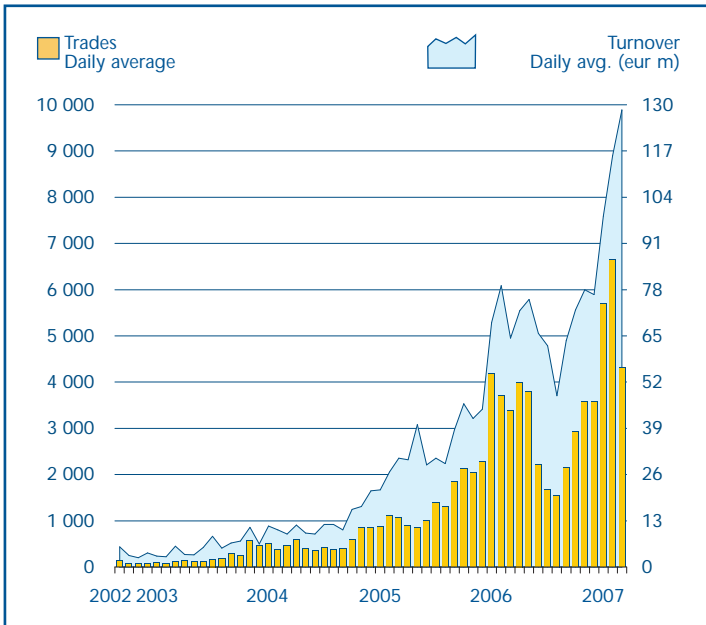
SHARES TRADING



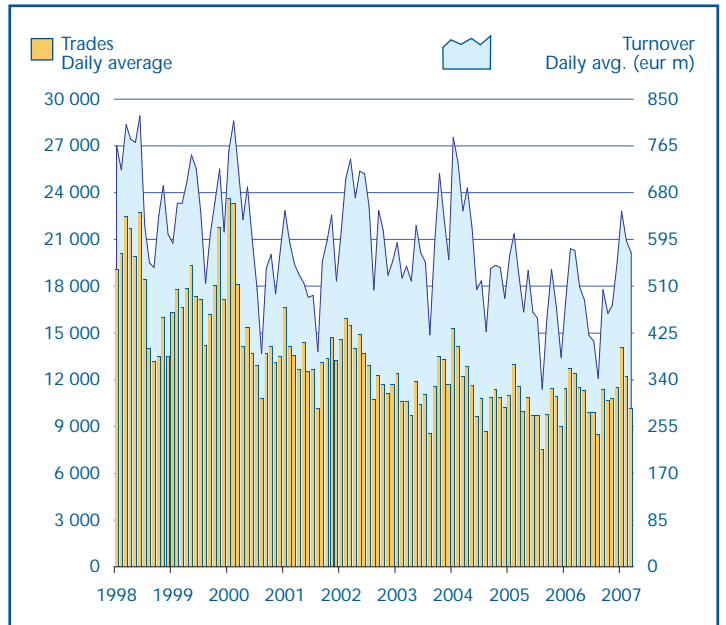
SECURITISED DERIVATIVES TRADING



ETF TRADING



FIXED INCOME TRADING



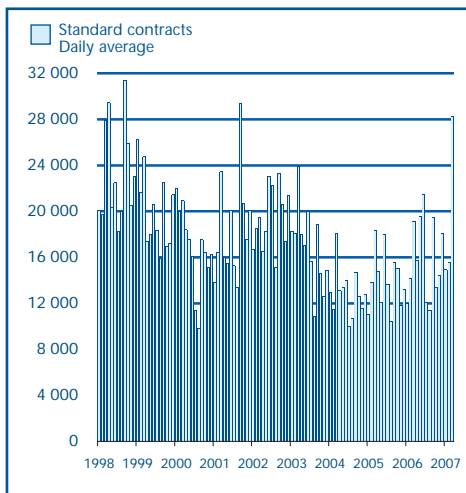
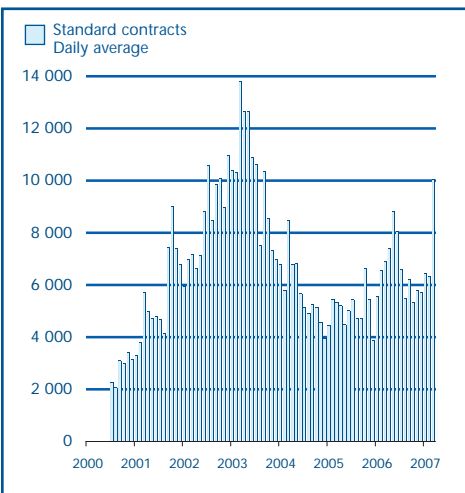
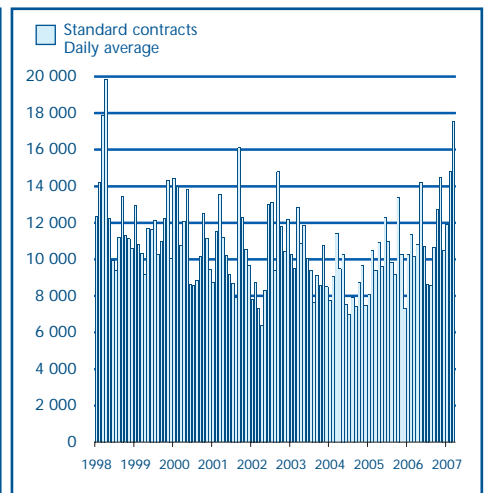
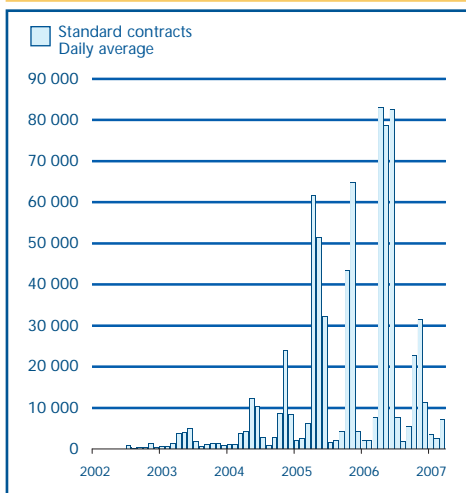
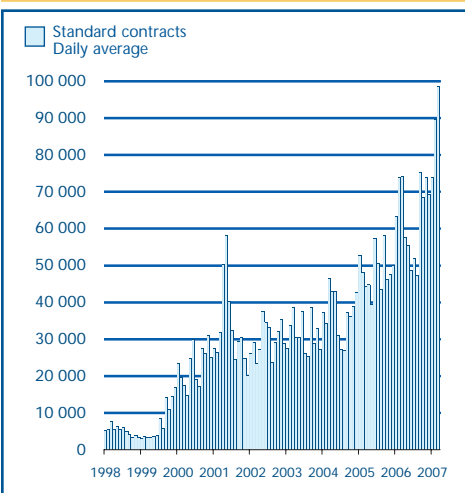
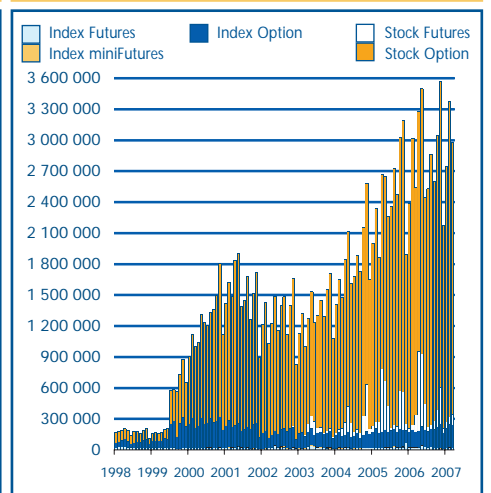
IDEM - EQUITY DERIVATIVES TURNOVER

	DAYS	MONTH	TURNOVER (1)								OPEN INTEREST (3) NUMBER OF CONTRACTS
			TOTAL				DAILY AVERAGE				
			STANDARD CONTRACTS	TRADES NUMBER	TURNOVER eur m	PREMIUM eur m	% TOT SHARES (2)	STANDARD CONTRACTS	TRADES NUMBER	TURNOVER eur m	
INDEX FUTURES	64	YEAR 2007	1 259 610	858 982	260 167.9	..	70.8%	19 681	13 422	4 065.1	21 304
	20	FEB 2007	310 974	230 676	66 057.8	..	59.0%	15 549	11 534	3 302.9	22 170
	22	MAR 2007	620 679	379 778	124 876.4	..	88.8%	28 213	17 263	5 676.2	21 304
INDEX MINIFUTURES	64	YEAR 2007	488 942	354 916	20 257.1	..	5.5%	7 640	5 546	316.5	2 916
	20	FEB 2007	126 884	94 639	5 391.3	..	4.8%	6 344	4 732	269.6	4 645
	22	MAR 2007	220 486	156 751	8 888.2	..	6.3%	10 022	7 125	404.0	2 916
INDEX OPTIONS	64	YEAR 2007	944 014	204 226	96 420.5	926.0	26.2%	14 750	3 191	1 506.6	224 324
	20	FEB 2007	296 507	61 908	30 747.5	265.9	27.5%	14 825	3 095	1 537.4	221 006
	22	MAR 2007	386 047	84 207	38 879.2	438.6	27.7%	17 548	3 828	1 767.2	224 324
STOCK FUTURES	64	YEAR 2007	284 158	20 106	1 552.9	..	0.5%	4 440	314	24.3	100 126
	20	FEB 2007	52 762	6 221	311.1	..	0.3%	2 638	311	15.6	76 064
	22	MAR 2007	156 394	7 598	735.3	..	0.6%	7 109	345	33.4	100 126
STOCK OPTIONS	64	YEAR 2007	5 586 932	177 689	27 590.1	764.6	8.7%	87 296	2 776	431.1	2 631 754
	20	FEB 2007	1 792 876	58 767	9 075.1	250.7	9.5%	89 644	2 938	453.8	3 047 516
	22	MAR 2007	2 171 869	60 176	10 175.8	292.5	8.2%	98 721	2 735	462.5	2 631 754
IDEM TOTAL	64	YEAR 2007	8 563 656	1 615 919	405 988.5	1 690.6	110.4%	133 807	25 249	6 343.6	2 980 424
	20	FEB 2007	2 580 003	452 211	111 582.8	516.6	99.6%	129 000	22 611	5 579.1	3 371 401
	22	MAR 2007	3 555 475	688 510	183 554.9	731.1	130.5%	161 613	31 296	8 343.4	2 980 424

(1) The notional turnover is computed as the product of contracts number, price and index multiplier for index futures; contracts number, price and size multiplier for stock futures; contracts number, strike prices and index multiplier for index options; contracts number, strike prices and sizes for stock options.

(2) As percentage on shares turnover (total shares for Index derivatives and Idem total; underlying shares for stock futures and stock options).

(3) Open positions at the end of period. Net figures for futures, gross figures for options.

INDEX FUTURES

INDEX MINIFUTURES

INDEX OPTION

STOCK FUTURES

STOCK OPTIONS

OPEN INTEREST


IDEM - EQUITY DERIVATIVES TURNOVER - MARCH 2007

	DAYS	TURNOVER ⁽¹⁾					OPEN INTEREST ⁽³⁾ NUMBER OF CONTRACTS		DAYS	TURNOVER ⁽¹⁾					OPEN INTEREST ⁽³⁾ NUMBER OF CONTRACTS
		STANDARD CONTRACTS	TRADES NUMBER	TURNOV. eur m	PREMIUM eur m	% TOT SHARES ⁽²⁾				STANDARD CONTRACTS	TRADES NUMBER	TURNOV. eur m	PREMIUM eur m	% TOT SHARES ⁽²⁾	
STOCK FUTURES															
Alleanza	22	2 820	133	13.3	-	1.2%	1 734	Intesa SanPaolo rsp	22	11	10	0.1	-	0.01%	6
Aem	22	83	20	0.5	-	0.1%	16	Italcementi	22	676	75	1.5	-	0.3%	287
Autogrill	22	237	63	1.6	-	0.3%	46	Lottomatica	22	1 519	176	4.5	-	0.7%	523
Autostrade	22	759	141	8.8	-	0.6%	258	Luxottica	22	835	142	9.9	-	1.3%	1 039
Banca Monte dei Paschi di Siena	22	1 112	78	5.2	-	0.4%	669	Mediaset	22	991	123	8.1	-	0.5%	648
Banca Pop. Milano	22	277	62	1.6	-	0.2%	68	Mediobanca	22	1 347	161	11.0	-	0.6%	1 547
Banche Pop. Unite	22	222	36	2.4	-	0.2%	118	Mediolanum	22	2 449	142	7.3	-	1.0%	1 454
Banco Popolare di Verona e Novara	22	167	65	1.9	-	0.1%	45	Parmalat	22	3 019	59	9.8	-	1.4%	2 918
Bulgari	22	119	58	1.3	-	0.3%	40	Pirelli & C	22	1 923	177	7.9	-	0.5%	1 029
Capitalia	22	6 283	255	40.5	-	1.0%	5 610	Saipem	22	539	116	5.6	-	0.3%	143
Enel	22	3 682	164	14.7	-	0.2%	2 245	Snam Rete Gas	22	168	45	0.8	-	0.1%	2 937
Eni	22	4 478	537	52.7	-	0.4%	2 872	STMicroelectronics	22	1 846	88	2.7	-	0.1%	3 651
Fastweb	22	1 574	223	6.8	-	0.2%	185	Telecom Italia	22	27 210	261	55.2	-	0.6%	15 768
Fiat	22	11 731	1 939	105.3	-	0.7%	13 050	Telecom Italia rsp	22	25 308	53	43.8	-	3.1%	14 670
Finmeccanica	22	706	135	7.8	-	0.6%	188	Tenaris	22	5 539	799	45.2	-	1.3%	2 901
Fondiarria-Sai	22	1 375	142	4.7	-	1.0%	426	Terna	22	880	156	11.8	-	1.4%	14
Generali	22	8 147	368	25.4	-	0.3%	4 757	Tiscali	22	10 702	135	28.4	-	5.3%	1 164
Gr. Ed. l'Espresso	22	300	40	1.1	-	0.8%	104	Unicredito Italiano	22	26 501	332	181.5	-	1.2%	16 580
Intesa SanPaolo	22	859	89	4.6	-	0.04%	416								
STOCK OPTIONS															
Acea	22	400	68	5.5	0.1	4.6%	241	Italcementi	22	647	74	1.4	0.03	0.3%	976
Aem	22	5 131	242	32.8	0.9	7.2%	6 058	Lottomatica	22	6 909	288	20.6	0.5	3.3%	9 646
Alitalia	22	8 803	318	9.2	0.7	2.9%	48 057	Luxottica	22	3 148	292	36.4	0.9	4.8%	4 047
Alleanza	22	44 889	2 018	218.2	6.5	20.3%	46 744	Mediaset	22	39 163	1 250	332.5	7.8	18.8%	43 596
Autogrill	22	7 176	261	50.5	0.9	9.1%	6 717	Mediobanca	22	18 951	1 223	161.6	3.7	9.2%	34 039
Autostrade	22	23 939	624	273.7	6.5	18.4%	29 759	Mediolanum	22	8 010	748	24.4	0.8	3.4%	12 595
Banca MPS	22	14 381	840	71.3	1.9	5.9%	26 716	Mondadori	22	1 259	139	9.9	0.3	4.9%	1 740
Banca Pop. Milano	22	5 106	321	31.3	0.8	3.0%	6 605	Parmalat	22	24 688	586	81.0	2.7	11.9%	45 807
Banche Pop. Unite	22	3 259	489	34.3	0.7	2.5%	5 977	Pirelli & C.	22	21 706	952	71.3	3.2	4.6%	43 407
Banco Popolare di Verona e Novara	22	17 491	955	204.2	5.8	7.9%	15 682	Rcs Mediagroup	22	270	61	1.1	0.03	1.4%	1 105
Bulgari	22	1 646	196	16.6	0.4	3.8%	1 907	Saipem	22	3 645	237	38.3	0.7	2.0%	6 785
Capitalia	22	39 263	2 408	264.1	6.9	6.5%	62 984	Seat Pagine Gialle	22	53 326	383	131.8	1.8	31.3%	57 922
Enel	22	87 039	2 752	349.5	7.3	3.8%	162 906	Snam Rete Gas	22	8 701	411	38.9	1.3	4.3%	15 316
Eni	22	84 358	4 644	992.1	22.3	6.7%	144 165	STMicroelectronics	22	93 535	2 601	134.4	4.5	4.8%	153 686
Fastweb	22	33 675	1 001	148.3	5.1	4.9%	29 164	Telecom Italia	22	363 715	5 794	790.6	37.3	8.8%	343 006
Fiat	22	196 137	9 386	1 783.8	64.6	11.4%	318 063	Telecom Italia rsp	22	71 511	1 330	135.5	4.3	9.5%	103 388
Finmeccanica	22	8 927	851	98.9	4.0	6.9%	14 047	Tenaris	22	31 549	2 168	274.4	8.7	7.6%	28 724
Fondiarria-Sai	22	2 472	161	8.6	0.2	1.9%	3 123	Terna	22	3 327	205	44.2	1.1	5.4%	4 511
Generali	22	634 504	7 103	2 029.3	48.5	27.8%	568 535	Tiscali	22	12 434	799	34.2	1.2	6.4%	21 315
Gr. Ed. l'Espresso	22	3 916	259	15.3	0.5	10.7%	6 830	Unicredito Italiano	22	123 705	3 534	841.6	19.2	5.5%	110 975
Intesa SanPaolo	22	59 158	2 204	334.3	8.2	3.0%	84 888								

(1) The notional turnover is computed as the product of contracts number, strike prices and sizes for options and as the product of contracts number, prices and sizes for futures.

(2) As percentage on shares turnover (underlying shares).

(3) Open positions at the end of period. Gross figures for options, net figures for futures.

NEW LISTINGS
RECENT EVENTS

ISSUER	MKT	SEGM.	SHARES	TRADING FIRST DAY	EVENT	1st DAY CAPITALISATION (eur m)	SPONSOR
- MTA-MTAX							
Polynt	MTA	STAR	O	30.10.2006	IPO (placement of 69.0% of share capital)	194.84	Mediobanca
Elica	MTA	STAR	O	10.11.2006	IPO (placement of 36.3% of share capital)	348.72	Unicredit Banca Mobiliare
Poltrona Frau	MTA	STAR	O	15.11.2006	IPO (placement of 38.7% of share capital)	402.08	Ubm, Merrill Lynch
Banca Generali	MTA	STD1	O	15.11.2006	IPO (placement of 32.2% of share capital)	1 003.38	Mediobanca, Banca Akros
Gruppo Coin (ex Bellini Inv.)	MTA	STD1	O	01.12.2006	Merger of Gruppo Coin in Bellini Inv.	590.66	
Gas Plus	MTA	STD1	O	06.12.2006	IPO (placement of 27.8% of share capital)	430.72	Banca Caboto
Ascopiave	MTA	STAR	O	12.12.2006	IPO (placement of 40.0% of share capital)	428.83	Mediobanca
Cobra	MTA	STAR	O	12.12.2006	IPO (placement of 36.3% of share capital)	167.33	Banca Imi
1 Ppr	MTA	MTAI	O	22.01.2007	Admission to trading on MTA International	-	-
2 Lvmh	MTA	MTAI	O	22.01.2007	Admission to trading on MTA International	-	-
3 Omnia Network	MTA	STAR	O	28.02.2007	IPO (placement of 34.7% of share capital)	122.66	Banca Imi, Intermonte Sim
- MERCATO EXPANDI							
Antichi Pellettieri	ME	ME2	O	07.06.2006	IPO (placement of 37.5% of share capital)	361.99	Mediobanca, Capitalia
Rdm Realty	ME	ME1	O	22.06.2006	Split of Reno de Medici	25.19	-
Valsoia	ME	ME1	O	14.07.2006	IPO (placement of 14.0% of share capital)	48.46	Abaxbank
Arkimedica	ME	ME2	O	01.08.2006	IPO (placement of 28.5% of share capital)	109.90	Intermonte Sim
Cogeme Set	ME	ME2	O	15.12.2006	IPO (placement of 35.4% of share capital)	71.82	Unipol Merchant
1 Biancamano	ME	ME1	O	07.03.2007	IPO (placement of 41.2% of share capital)	101.49	Banca Imi,
2 Toscana Finanza	ME	ME1	O	21.03.2007	IPO (placement of 31.3% of share capital)	90.93	Abaxbank

PUBLIC OFFERS FROM NEWLY ADMITTED COMPANIES (IPOS AND SPOS)

2 Security: BIANCAMANO ORD (AEG)							
Offer period:	21.02.2007 01.03.2007	Offered shares:	max	14 000 000	di cui Pubblico	min	2 800 000
Offer price:	2.8000	Greenshoe:	max	2 100 000			max
Bookbuilding range:	2.5000-3.0000	Requested shares:		50 432 009			11 200 000
Minimum lot:	1 500	Allotted shares:		14 000 000	10 279 500		40 152 509
Placed stake:	41.2%	- of which greenshoe:		2 800 500		11 199 500
		Capital raised (ML euro):		39.20	7.84		31.36
		- from newly issued shares:		39.20			
Blt alphabetical code:	BCM	Market and segment:		ME - ME1			
Bloomberg code:	BCM IM	Sector:		..			
Reuters code:	BCM.MI						
3 Security: TOSCANA FINANZA ORD (AEG)							
Offer period:	12.03.2007 16.03.2007	Offered shares:	max	8 500 000	di cui Pubblico	min	1 700 000
Offer price:	3.0000	Greenshoe:	max	850 000			max
Bookbuilding range:	2.8000-3.5000	Requested shares:		15 546 455			6 800 000
Minimum lot:	800	Allotted shares:		8 500 000	2 707 200		12 839 255
Placed stake:	31.3%	- of which greenshoe:		1 703 200		6 796 800
		Capital raised (ML euro):		25.50	5.11		20.39
		- from newly issued shares:		22.95			
Blt alphabetical code:	TF	Market and segment:		ME - ME1			
Bloomberg code:	TF IM	Sector:		..			
Reuters code:	TF.MI						
4 Security: SERVIZI ITALIA ORD (AEG)							
Offer period:	19.03.2007 29.03.2007	Offered shares:	max	7 240 000	di cui Pubblico	min	-
Offer price:	-	Greenshoe:	max	725 000			max
Bookbuilding range:	8.5000-10.5000	Requested shares:		9 507 661			7 240 000
Minimum lot:	-	Allotted shares:		7 240 000			9 507 661
Placed stake:	44.7%	- of which greenshoe:				7 240 000
		Capital raised (ML euro):		61.54			61.54
		- from newly issued shares:		32.61			
Blt alphabetical code:	SRI	Market and segment:		ME - ME2			
Bloomberg code:	SRI IM	Sector:		..			
Reuters code:	SRI .MI						
5 Security: AICON ORD ORD (AEG)							
Offer period:	26.03.2007 30.03.2007	Offered shares:	max	35 000 000	di cui Pubblico	min	3 575 000
Offer price:	4.1000	Greenshoe:	max	5 250 000			max
Bookbuilding range:	3.7000-4.6000	Requested shares:		180 490 352			31 425 000
Minimum lot:	650	Allotted shares:		35 000 000	19 007 300		161 483 052
Placed stake:	32.1%	- of which greenshoe:		3 575 000		31 425 000
		Capital raised (ML euro):		143.50	14.66		128.84
		- from newly issued shares:		36.90			
Blt alphabetical code:	AIC	Market and segment:		MTA - STAR			
Bloomberg code:	AIC IM	Sector:		INDUSTRIAL - MISCELLANEOUS			
Reuters code:	AIC.MI						

Nota: The column "Total" includes, in addition to public and institutional tranches, also prospective offers reserved to other investors (family & friends etc.). Allotted shares figure doesn't include overallotted shares until the greenshoe option is possibly exercised.

PUBLIC OFFERS FROM ALREADY LISTED COMPANIES

Security:	ENEL ORD			Total	of which Public	of which Institutionals
Public offer period:	27.06.2005 01.07.2005	Offered shares:	max 500 000 000	min 100 000 000	max 400 000 000	
Offer price:	7.0700	Greenshoe:	max 75 000 000	
Bookbuilding range:	..	Requested shares:	1 690 044 706	611 377 000	1 078 667 706	
Minimum lot:	500	Allotted shares:	575 000 000	250 000 000	325 000 000	
Placed stake:	9.4%	- of which greenshoe:	75 000 000	..	75 000 000	
		Capital raised (eur m):	4 101.00	1 767.50	2 333.50	
		- from newly issued shares:	-			
Blit alphabetical code:	ENEL	Market and segment:	MTA - BC			
Bloomberg code:	ENEL IM	Sector:	SERVICES - PUBLIC UTILITIES			
Reuters code:	ENEI.MI					

REVERSE SPLITS

N°	MKT	SEGM.	SHARES	EFFECTIVE DATE	ISSUE RATE
	MTA	STD1	FIN.PART ORD	05.09.2005	1 : 20
	MTA	BC	ALITALIA ORD	19.09.2005	1 : 30
1	ME	ME1	RDM REALTY ORD	05.02.2007	1 : 100
2	MTA	BC	BANCA CR FIRENZE ORD	05.03.2007	3 : 5

SPLITS

N°	MKT	SEGM.	SHARES	EFFECTIVE DATE	ISSUE RATE
	MTA	ST	ESPRINET ORD	16.05.2005	10 : 1
	MTA	STD1	FIN.PART ORD	05.09.2005	11 : 1
	MTA	BC	AMPLIFON ORD	08.05.2006	10 : 1
	MTAX	ST	DATALOGIC ORD	08.05.2006	4 : 1

RIGHT ISSUES

N°	MKT	SEGM.	SECURITIES	OPTION RIGHTS TRADING PERIOD		OFFER PRICE	OFFERED SHARES	ISSUE RATE	UNEXERCISED PREEMPTIVE RIGHTS (%)	ALLOTTED SHARES	CAPITAL RAISED (eur m)
				FROM	TO						
	ME	ME2	BANCA POP. EMILIA ROMAGNA ORD, OCV	30.10.2006	04.12.2006	13.0000	15 724 987	1:18 az., 1:6 ob.	0.98%	15 724 985	204.42
				30.10.2006	04.12.2006	16.0000	12 865 897	1:22 az., 3:22 ob.	1.14%	12 865 890	205.85
											410.28
	MTAX	STD1	EUPHON ORD	04.12.2006	22.12.2006	7.0000	2 142 000	3 : 10	13.32%	2 142 000	14.99
	MTA	STD1	SNAI ORD	04.12.2006	21.12.2006	4.0500	61 718 860	28 : 25	0.95%	61 718 860	249.96
	MTA	STD2	INVEST. E SVILUPPO ORD + WAR	04.12.2006	22.12.2006	0.2000	228 000 000	16 : 1 azioni	1.75%	228 000 000	45.60
				04.12.2006	22.12.2006	..	228 000 000	16 : 1 vecchie azioni	1.75%	224 002 752	-
											45.60
1	ME	ME1	KERSELF ORD	27.12.2006	17.01.2007	3.2500	1 537 698	3 : 20	2.02%	1 537 698	5.00
2	MTA	BC	BANCA ITALLEASE ORD	15.01.2007	02.02.2007	37.6000	7 958 364	2 : 21	0.16%	7 958 364	299.23

SCRIP RIGHT ISSUES

N°	MKT	SEGM.	SECURITIES	EFFECTIVE DATE	NOMINAL VALUE		ISSUED SHARES	ISSUE RATE	TURNOVER (eur m)
					BEFORE	AFTER			
	MTA	BC	BANCA CR FIRENZE ORD	22.05.2006	0.5700	0.6000	-	-	34.12
				22.05.2006	0.6000	0.6000	151 638 154	2 : 15	90.98
									125.10
	MTA	STD1	LA GAIANA ORD	05.06.2006	0.5200	0.5200	35 912 880	2 : 1	18.67
	ME	ME2	BANCA POP EMILIA ROMAGNA ORD	26.06.2006	3.0000	3.0000	155 075 916	2 : 1	465.23
	MTA	STD1	UNI LAND ORD	03.07.2006	0.2100	0.2100	82 520 000	1 : 10	17.33
	MTA	BC	BANCA CARIGE ORD/RSP	10.07.2006	1.0000	1.0000	164 878 401	1 : 7 ord/rsp	164.88

INVESTMENT FLOWS CHANELLED THROUGH THE EXCHANGE (eur m)

	NUMBER	SECURITIES		MONEY RAISED	SHARE-HOLDERS	INVESTORS			
		NEWLY ISSUED	SOLD			PUBLIC	EMPLOYEES	INSTIT. INVESTORS	OTHER
a) YEAR 2007 - CAPITAL INCREASES	2	304.23	-	304.23	304.23	-	-	-	-
of which: - Blue Chip	1	299.23	-	299.23	299.23	-	-	-	-
- Star	-	-	-	-	-	-	-	-	-
- Standard	-	-	-	-	-	-	-	-	-
- Mercato Expandi	1	5.00	-	5.00	5.00	-	-	-	-
b) YEAR 2007 - OPVS TOTAL (Excluded Closed-end funds)	5	161.66	153.08	314.74	-	38.86	-	275.88	-
of which: - Blue Chip	-	-	-	-	-	-	-	-	-
- Star	2	66.90	121.60	188.50	-	25.91	-	162.59	-
- Standard	-	-	-	-	-	-	-	-	-
- Mercato Expandi	3	94.76	31.48	126.24	-	12.95	-	113.29	-
of which: - NEW LISTINGS	5	161.66	153.08	314.74	-	38.86	-	275.88	-
- Blue Chip	-	-	-	-	-	-	-	-	-
- Star	2	66.90	121.60	188.50	-	25.91	-	162.59	-
- Standard	-	-	-	-	-	-	-	-	-
- Mercato Expandi	3	94.76	31.48	126.24	-	12.95	-	113.29	-
YEAR 2007 - MONEY RAISED (a+b)	7	465.89	153.08	618.97	304.23	38.86	-	275.88	-

ADJUSTMENT COEFFICIENTS

DATE	SHARES	K	DUE TO	DATE	SHARES	K	DUE TO
13.11.2006	Marcolin	0.93870763	Right issue	18.12.2006	Biesse	0.98847115	Extraordinary dividend
13.11.2006	Sirti	0.69400245	Extraordinary dividend	27.12.2006	Kerself	0.95118113	Right issue
20.11.2006	Sias	0.98617512	Extraordinary dividend	15.01.2007	Banca Italease	0.98108854	Right issue
27.11.2006	Autostrada To-Mi	0.98888024	Extraordinary dividend	05.02.2007	Borgosesia rsp.	0.99168292	Extraordinary dividend
04.12.2006	Euphon	0.99136837	Right issue	05.02.2007	Rdm Realty	100.00000000	Reverse split
04.12.2006	Snai	0.74867192	Right issue	05.03.2007	Banca Cr Firenze	1.66666667	Reverse split
04.12.2006	Invest e Sviluppo	0.33927382	Right issue	19.03.2007	Intek	0.90102209	Warrant scrip issue

TAKEOVER BIDS

N°	BIDDER	OFFER TYPE	TARGET SHARES	OFFER PERIOD		PRICE (eur)	SHARES		STAKE OWNED AFTER OFFER ⁽¹⁾	TURNOVER (eur m)
				FROM	TO		REQUESTED	BOUGHT		
1	FINMECCANICA	RESIDUAL	DATAMAT ORD.	27.11.2006	03.01.2007	9.911	2 834 566	2 263 745	94.31%	22.44
2	EURIZON FINANCIAL GROUP	RESIDUAL	BANCA FIDEURAM ORD.	12.12.2006	18.01.2007	5	73 506 652	60 767 640	97.41%	303.84
3	FINANZIARIA SVILUPPO UTILITIES	MANDATORY	IRIDE ORD.	19.12.2006	16.01.2007	2.1247	305 022 290	396 821	58.27%	0.84
4	LAZIO EVENTS	MANDATORY	S.S. LAZIO ORD.	27.12.2006	31.01.2007	0.4	33 514 556	7 307 791	61.31%	2.92
5	VENETO BANCA	PARTIAL	BCA POP INTRA ORD.	08.02.2007	21.03.2007	15	42 218 481	42 218 481	75.43%	633.28
6	DE AGOSTINI	MANDATORY	DEA CAPITAL ORD.	27.02.2007	19.03.2007	2.874	49 928 200	373 017	51.49%	1.07

- Are currently underway the voluntary tender offer by BT over ordinary shares I.NET and the mandatory tender offer by GRANDE JOLLY over ordinary shares JOLLY HOTELS.

Notes:	AAI Before unexercised preemptive right auction	BC COMP Blue Chip segment Compendium	ME MTAI Mercato Expandi MTA International	ST STD Star Segment Standard Segment
--------	---	--------------------------------------	---	--------------------------------------

ADVERTISING

I METALLI PREZIOSI NON SONO MAI STATI COSÌ VICINI: BENCHMARK UNICREDIT SU ORO E ARGENTO.

Con i Benchmark UniCredit puoi accedere in modo semplice e conveniente ai mercati dei metalli preziosi partecipando linearmente alla performance di oro e argento. Il rischio del tasso di cambio è annullato anche se il sottostante quota in dollari, perchè la valuta americana è convertita convenzionalmente in Euro in misura 1 dollaro = 1 euro; il costo di tale conversione è incorporato direttamente nel prezzo di mercato del certificates. Scopri quanto sono vicini i mercati dei metalli preziosi grazie ai servizi TradingLab su www.tradinglab.it: prezzi in tempo reale, flash dei trader e newsletter gratuite.

Codice ISIN	Sottostante	Scadenza	Multiplo	kV
IT0004091838	ARGENTO	18.12.2009	0,1	73
IT0004091853	ORO	18.12.2009	0,01	42

Dati di KILOVAR® aggiornati al 27.03.07. Tutti i Benchmark UniCredit sono quotati sul mercato SeDeX di Borsa Italiana dalle 9.05 alle 20.30. Per la negoziazione puoi rivolgerti al tuo intermediario di fiducia. Prima dell'investimento consigliamo la visione del prospetto informativo disponibile presso la Borsa Italiana S.p.A. Questo annuncio non costituisce un'offerta di vendita né una sollecitazione all'investimento. TRADINGLAB® è un marchio di proprietà di UniCredit Group.

TRADINGLAB®
Sei padrone delle tue azioni

SERVIZIO CLIENTI info@tradinglab.it - Fax 02.700.508.389 - Numero Verde 800.01.11.22 - www.tradinglab.it