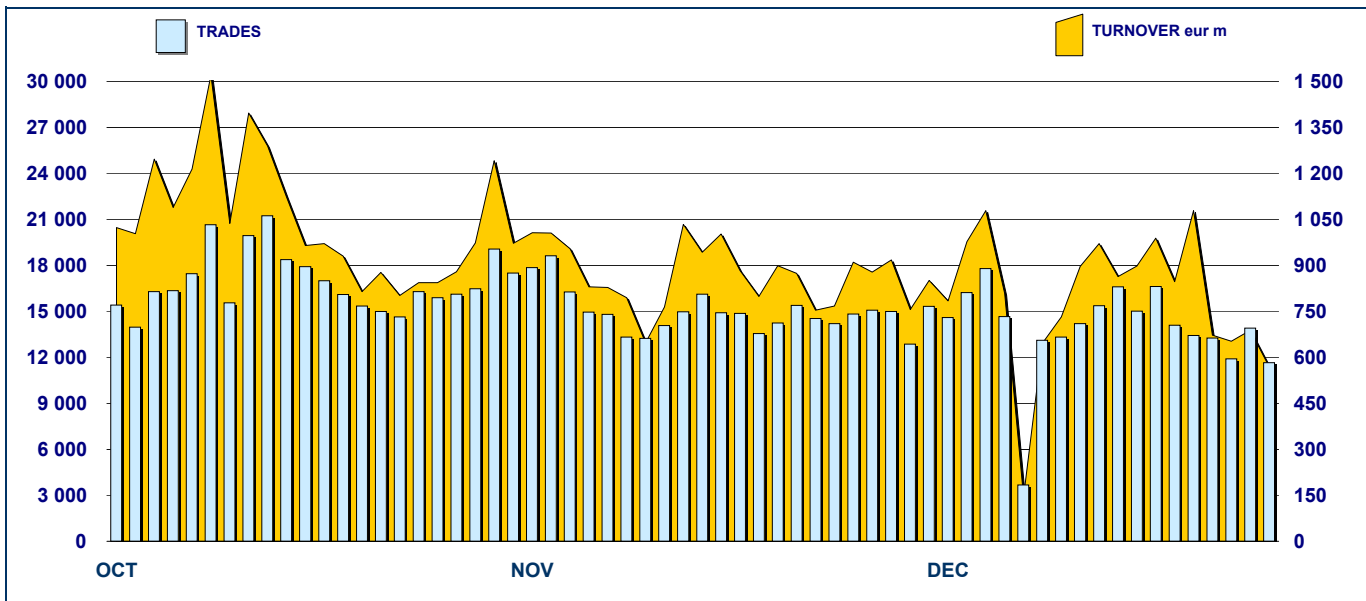


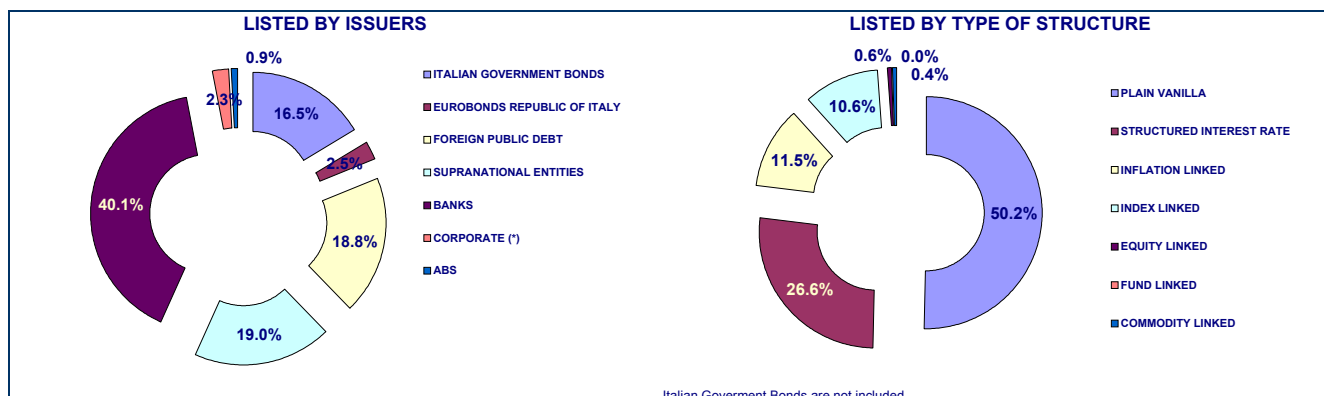
MOT DAILY TURNOVER



MAIN INDICATORS

	LISTED BOND					TRADING					
	DEC 2007	NOVEMBER 2008		DECEMBER 2008		NOVEMBER 2008		DECEMBER 2008		JAN-DEC 2008	
	LISTED END OF MONTH	LISTED END OF MONTH	NEW LISTED EGIN of JAN 2008	LISTED END OF MONTH	NEW LISTED EGIN of JAN 2007	TRADES number	TURNOVER eur m	TRADES number	TURNOVER eur m	TRADES number	TURNOVER eur m
MARKET SEGMENTS											
ITALIAN GOVERNMENT BONDS	92	95	46	93	49	238 917	16 226.5	221 560	14 323.6	2 455 657	165 613.1
BONDS	288	281	35	276	35	37 252	460.3	28 423	353.5	438 508	5 732.1
EUROBONDS and ABSs	155	198	67	195	67	19 553	551.1	14 757	466.8	156 609	5 173.0
TOTAL	535	574	148	564	151	295 722	17 237.9	264 740	15 143.9	3 050 774	176 518.2
ISSUERS											
ITALIAN GOVERNMENT BONDS	92	95	46	93	49	238 917	16 226.5	221 560	14 323.6	2 455 657	165 613.1
EUROBONDS REPUBLIC OF ITALY	17	14	1	14	1	2 551	60.2	1 525	39.1	21 928	618.2
FOREIGN PUBLIC DEBT	92	107	25	106	25	2 629	90.7	2 308	120.9	20 612	938.3
SUPRANATIONAL ENTITIES	81	109	35	107	35	15 273	395.1	11 114	286.1	119 190	3 012.2
BANKS	233	231	41	226	41	25 318	318.5	19 960	252.6	337 651	4 748.1
CORPORATE (*)	13	13	-	13	-	10 979	145.9	8 216	120.6	93 958	1 447.7
ABS	7	5	-	5	-	55	1.0	57	1.1	1 778	140.7
TOTAL	535	574	148	564	151	295 722	17 237.9	264 740	15 143.9	3 050 774	176 518.2
(*) BOC and BOP are included											
TYPE OF STRUCTURE											
PLAIN VANILLA	212	242	69	236	69	28 785	642.1	22 068	523.2	270 485	6 336.5
STRUCTURED INTEREST RATE	116	125	16	125	16	12 185	141.0	8 731	96.7	108 759	1 384.4
INFLATION LINKED	51	55	8	54	8	8 564	130.2	7 258	135.4	116 758	1 923.1
INDEX LINKED	47	50	8	50	8	6 581	87.1	4 777	61.4	74 537	940.0
EQUITY LINKED	14	4	-	3	-	558	8.2	247	2.6	19 846	264.0
FUND LINKED	1	-	-	-	-	-	-	-	-	1 035	12.6
COMMODITY LINKED	2	2	-	2	-	65	0.7	87	0.7	3 560	39.7
CURRENCY LINKED	-	1	1	1	1	67	2.2	12	0.3	137	4.9
ITALIAN GOVERNMENT BONDS	92	95	46	93	49	238 917	16 226.5	221 560	14 323.6	2 455 657	165 613.1
TOTAL	535	574	148	564	151	295 722	17 237.9	264 740	15 143.9	3 050 774	176 518.2

FOCUS ON LISTED BONDS - END OF MONTH



ISSUERS - MOST TRADED BONDS IN TERMS OF TURNOVER

ITALIAN GOVERNMENT BONDS - December 2008				FOREIGN PUBLIC DEBT - December 2008			
ISIN	DESC	eur m	TRADES	ISIN	DESC	eur m	TRADES
IT0003934657	B.T.P. 05/37 TF 4.00% EUR	801.12	18 858	FR0010050559	OAT-I 03/20 TV EUR	12.97	82
IT0004166812	C.T.Z. 2/1/2007 - 31/12/2008 ZC EUR	418.03	1 249	FR0000188799	OAT-I 02/32 TV EUR	9.64	29
IT0004356843	B.T.P. 08/23 TF 4.75% EUR	411.46	6 866	DE0001030500	DBR-EI 06/16 TV EUR	9.63	106
IT0004220627	B.T.P. 07/12 TF 4.00% EUR	398.00	5 865	DE0001141471	BOBL 05/10 TF 2.5% EUR	8.95	149
IT0004164775	B.T.P. 06/17 TF 4% EUR	364.46	6 915	DE0001141448	REP FED TEDESCA 04/09 TF 3.25% EUR	8.32	73

EUROBONDS REPUBLIC OF ITALY - December 2008				SUPRANATIONAL ENTITIES - December 2008			
ISIN	DESC	eur m	TRADES	ISIN	DESC	eur m	TRADES
US465410BK38	REP OF ITALY 04/09 TF 3,25 USD	10.18	293	XS0249816579	B.E.I. 06/11 TF 3,625% EUR	58.70	1 486
US465410BG26	REP OF ITALY 03/33 TF 5,375% USD	7.06	401	XS0276299541	B.E.I. 06/10 TF 3,750% EUR	23.77	709
US465410BF43	REP OF ITALY 03/13 TF 4,375% USD	6.44	266	XS0272359489	B.E.I. 06/16 TF 3,875% EUR	15.69	440
US465410BN76	REP OF ITALY 05/15 TF 4,50% USD	5.73	214	XS0093014610	B.E.I. 99/09 TF 4% EUR	15.47	532
XS0098449456	REP OF ITALY 99/29 TV EUR	5.27	204	XS0160908249	B.E.I. 03/13 TF 4.50% GBP	14.14	505

BANKS - December 2008				CORPORATE - December 2008			
ISIN	DESC	eur m	TRADES	ISIN	DESC	eur m	TRADES
IT0000958592	MEDIOBANCA 96/11 ZC ITL	22.01	1 333	XS0129648621	FIAT 01/11 TF 6,75% EUR	35.02	2 306
IT0003594832	BANCA INTESA 04/09 TV EUR	14.68	854	IT0004292691	ENEL 07/15 TV EUR	26.10	1 557
IT0003617674	BANCA INTESA 04/09 TV EUR	11.85	710	XS0107525403	FIAT 00/10 TF 6,25% EUR	16.33	1 067
IT0003035299	UNICREDITO ITALIANO 00/10 MULTI C	9.54	635	XS0137544465	FIAT 01/11 STEP COUPON EUR	11.57	1 207
IT0003560339	BANCA INTESA 03/08 TV EUR	8.81	347	IT0004292683	ENEL 07/15 TF 5,25% EUR	11.35	833

TYPE OF STRUCTURE - MOST TRADED BONDS IN TERMS OF TURNOVER

PLAIN VANILLA - December 2008				STRUCTURED INTEREST RATE - December 2008			
ISIN	DESC	eur m	TRADES	ISIN	DESC	eur m	TRADES
XS0249816579	B.E.I. 06/11 TF 3,625% EUR	58.70	1 486	XS0137544465	FIAT 01/11 STEP COUPON EUR	11.57	1 207
XS0129648621	FIAT 01/11 TF 6,75% EUR	35.02	2 306	IT0006571829	B.E.I. 04/15 MULTI COUPON EUR	5.89	372
IT0004292691	ENEL 07/15 TV EUR	26.10	1 557	XS0098449456	REPUBLIC OF ITALY 99/29 TV EUR	5.27	204
XS0276299541	B.E.I. 06/10 TF 3,750% EUR	23.77	709	IT0006585449	BEI 05/15 MULTI COUPON EUR	3.57	266
IT0000958592	MEDIOBANCA 96/11 ZC ITL	22.01	1 333	IT0001257333	CENTROBANCA 98/14 REVERSE ITL	2.60	181

INFLATION LINKED - December 2008				INDEX LINKED - December 2008			
ISIN	DESC	eur m	TRADES	ISIN	DESC	eur m	TRADES
IT0003594832	BANCA INTESA 04/09 TV EUR	14.68	854	IT0003035299	UNICREDITO ITALIANO 00/10 MULTI COU	9.54	635
FR0010050559	OAT-I 03/20 TV EUR	12.97	82	IT0006645326	MERRILL LYNCH 07/13 MULTI COUPON E	4.16	276
IT0003617674	BANCA INTESA 04/09 TV EUR	11.85	710	IT0006640236	MORGAN STANLEY 07/13 MULTI COUPO	3.73	230
FR0000188799	OAT-I 02/32 TV EUR	9.64	29	IT0006649005	ABN AMRO BANK 07/12 MULTI COUPON	3.51	178
DE0001030500	DBR-EI 06/16 TV EUR	9.63	106	IT0006604539	MORGAN STANLEY 06/12 MULTI COUPO	3.39	183

EQUITY LINKED - December 2008				FUND LINKED - December 2008			
ISIN	DESC	eur m	TRADES	ISIN	DESC	eur m	TRADES
IT0006565979	BAYERISCHE HYPO-UND VEREINSBA	1.55	144	IT0006607474	BERS 06/11 ONE COUPON EUR	0.37	38
IT0006563974	BAYERISCHE HYPO-UND VEREINSBA	0.86	70	IT0003933154	MEDIOBANCA 05/11 ONE COUPON EUR	0.34	49
IT0001278941	CENTROBANCA 98/13 MULTI COUPO	0.13	21				
IT0003739841	BANCA INTESA 04/09 TV EUR	0.05	12				

News

DomesticMOT: Base Prospectus: 2 Barclays issue programs



Research & Development
 Piazza degli Affari, 6 - 20123 - Milano
 Tel +39 02 72426.478 - Fax +39 02 8646.4323
 e-mail: research@borsaitaliana.it
www.borsaitaliana.it

The publication of this document does not represent solicitation, by Borsa Italiana S.p.A., of public saving and is not to be considered as a recommendation by Borsa Italiana as to the suitability of the investment, if any, herein described.
 This document has not to be considered complete and it is meant for information and discussion purposes only. Borsa Italiana accepts no liability, arising, without limitation to the generality of the foregoing, from inaccuracies and/or mistakes, for decisions and/or actions taken by any party based on this documents.
 Trademarks Borsa Italiana and Borsa Italiana's logo, Expandi, IDEM, MOT, MTA, MTF, STAR, SeDx, All STARS, MIB, MIB 30, MIBTEL, MIDEX, ITEX, Bit Club, Academy, MiniFIB, DDM, EuroMOT, Market Connect, NIS are owned by Borsa Italiana S.p.A.
 Trademark S&P is owned by The McGraw-Hill Companies Inc.
 The above trademarks and any other trademark owned by the London Stock Exchange Group cannot be used without express written consent by the Company having the ownership of the same.
 Borsa Italiana S.p.A. is subject to direction and coordination of London Stock Exchange Group Plc. Borsa Italiana's subsidiaries are subject to its direction and coordination.
 © December 2008 Borsa Italiana S.p.A. All rights reserved.