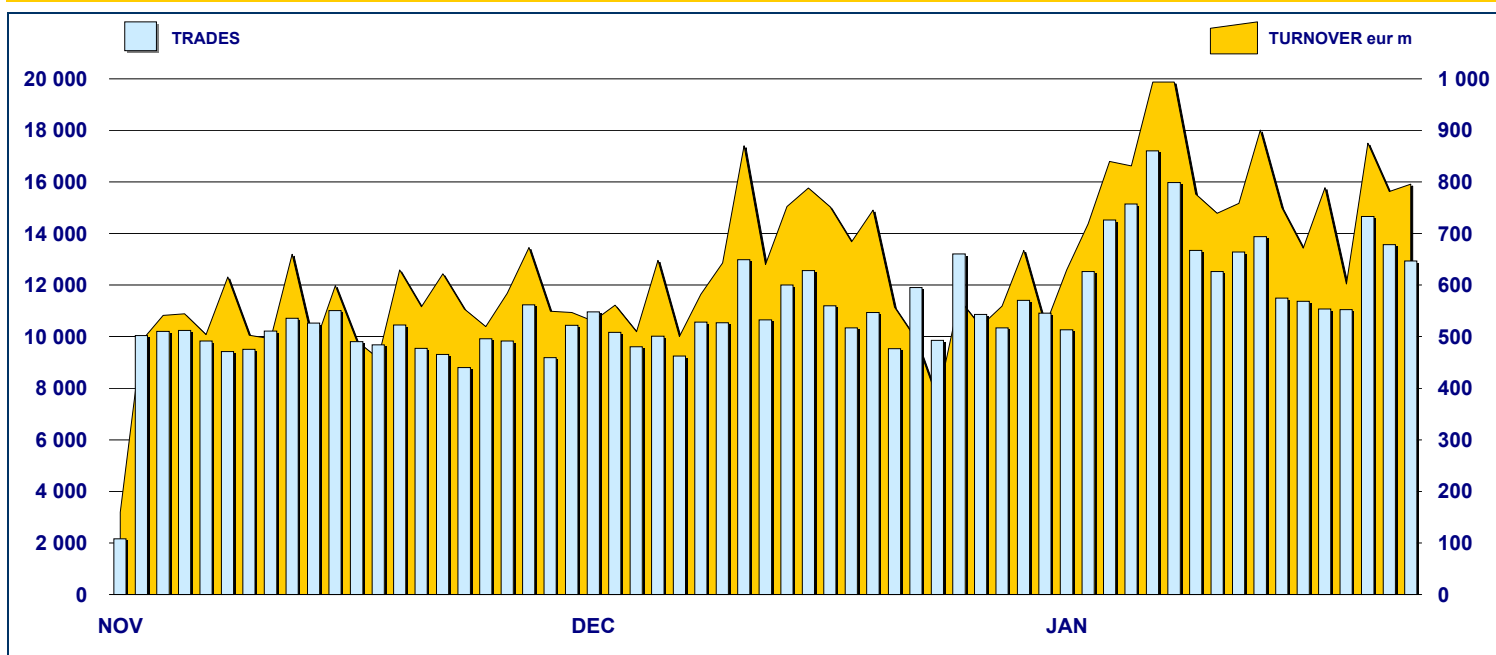


### MOT DAILY TURNOVER



### MAIN INDICATORS

	LISTED BOND					TRADING						
	DEC 2006		DECEMBER 2007		JANUARY 2008		NOVEMBER 2007		DECEMBER 2007		JANUARY 2008	
	LISTED END of MONTH	LISTED END of MONTH	NEW LISTED BEGIN of JAN 2007	LISTED END of MONTH	NEW LISTED BEGIN of JAN 2008	TRADES number	TURNOVER eur m	TRADES number	TURNOVER eur m	TRADES number	TURNOVER eur m	
<b>MARKET SEGMENTS</b>												
ITALIAN GOVERNMENT BONDS	91	92	47	91	4	166 941	11 006.7	143 861	9 867.0	224 687	15 154.0	
BONDS	303	288	36	288	6	36 910	507.4	30 791	472.1	46 188	690.5	
EUROBONDS and ABSs	135	155	35	164	11	8 256	264.6	8 442	298.3	10 716	441.1	
<b>TOTAL</b>	<b>529</b>	<b>535</b>	<b>118</b>	<b>543</b>	<b>21</b>	<b>212 107</b>	<b>11 778.7</b>	<b>183 094</b>	<b>10 637.4</b>	<b>281 591</b>	<b>16 285.6</b>	
<b>ISSUERS</b>												
ITALIAN GOVERNMENT BONDS	91	92	47	91	4	166 941	11 006.7	143 861	9 867.0	224 687	15 154.0	
EUROBONDS REPUBLIC OF ITALY	18	17	2	17	-	2 067	63.8	1 815	64.0	2 045	63.3	
FOREIGN PUBLIC DEBT	83	92	15	96	5	1 180	38.1	949	37.4	1 774	103.4	
SUPRANATIONAL ENTITIES	71	81	15	86	6	6 438	144.2	6 482	178.3	7 880	192.4	
BANKS	247	233	37	233	6	31 217	454.0	22 113	333.6	31 814	514.5	
CORPORATE (*)	11	13	2	13	-	4 078	61.7	7 725	141.0	13 205	240.5	
ABS	8	7	-	7	-	186	10.2	149	16.2	186	17.4	
<b>TOTAL</b>	<b>529</b>	<b>535</b>	<b>118</b>	<b>543</b>	<b>21</b>	<b>212 107</b>	<b>11 778.7</b>	<b>183 094</b>	<b>10 637.4</b>	<b>281 591</b>	<b>16 285.6</b>	
(*) BOC and BOP are included												
<b>TYPE OF STRUCTURE</b>												
PLAIN VANILLA	209	212	36	219	11	14 830	351.4	19 052	468.7	26 932	655.7	
STRUCTURED INTEREST RATE	110	116	8	119	5	9 765	139.0	6 896	105.6	10 946	168.7	
INFLATION LINKED	42	51	9	51	-	6 339	95.3	5 228	92.4	9 250	177.1	
INDEX LINKED	52	47	17	46	1	5 598	84.8	3 931	45.8	6 231	85.8	
EQUITY LINKED	18	14	1	14	-	8 247	96.9	3 543	51.0	3 108	39.7	
FUND LINKED	5	1	-	1	-	173	2.0	447	5.1	163	1.8	
COMMODITY LINKED	2	2	-	2	-	214	2.6	136	1.8	274	2.8	
ITALIAN GOVERNMENT BONDS	91	92	47	91	4	166 941	11 006.7	143 861	9 867.0	224 687	15 154.0	
<b>TOTAL</b>	<b>529</b>	<b>535</b>	<b>118</b>	<b>543</b>	<b>21</b>	<b>212 107</b>	<b>11 778.7</b>	<b>183 094</b>	<b>10 637.4</b>	<b>281 591</b>	<b>16 285.6</b>	

