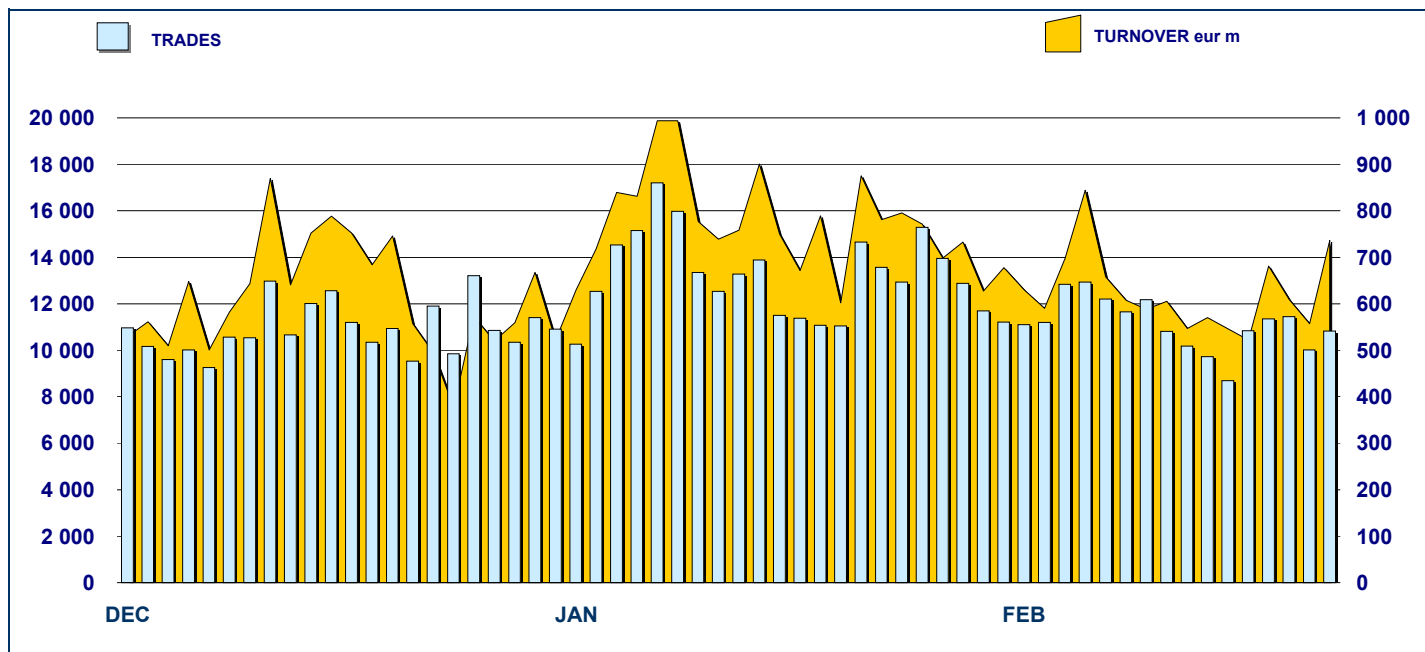


### MOT DAILY TURNOVER



### MAIN INDICATORS

#### LISTED BOND

#### TRADING

	DEC 2007		JANUARY 2008		FEBRUARY 2008		JANUARY 2008		FEBRUARY 2008		JAN-FEB 2008		
	LISTED END of MONTH	LISTED END of MONTH	NEW LISTED EGIN of JAN 20	LISTED END of MONTH	NEW LISTED EGIN of JAN 2007	LISTED END of MONTH	NEW LISTED EGIN of JAN 2007	TRADES number	TURNOVER eur m	TRADES number	TURNOVER eur m	TRADES number	TURNOVER eur m
<b>MARKET SEGMENTS</b>													
ITALIAN GOVERNMENT BONDS	92	91	4	92	8	224 687	15 154.0	194 148	12 572.7	418 835	27 726.7		
BONDS	288	288	6	288	8	46 188	690.5	39 805	572.2	85 993	1 262.6		
EUROBONDS and ABSs	155	164	11	176	24	10 716	441.1	9 064	352.3	19 780	793.4		
<b>TOTAL</b>	<b>535</b>	<b>543</b>	<b>21</b>	<b>556</b>	<b>40</b>	<b>281 591</b>	<b>16 285.6</b>	<b>243 017</b>	<b>13 497.1</b>	<b>524 608</b>	<b>29 782.8</b>		

#### ISSUERS

ITALIAN GOVERNMENT BONDS	92	91	4	92	8	224 687	15 154.0	194 148	12 572.7	418 835	27 726.7		
EUROBONDS REPUBLIC OF ITALY	17	17	-	17	-	2 045	63.3	1 712	60.3	3 757	123.6		
FOREIGN PUBLIC DEBT	92	96	5	95	5	1 774	103.4	1 383	43.6	3 157	147.0		
SUPRANATIONAL ENTITIES	81	86	6	99	19	7 880	192.4	7 002	155.7	14 882	348.2		
BANKS	233	233	6	233	8	31 814	514.5	30 457	489.0	62 271	1 003.5		
CORPORATE (*)	13	13	-	13	-	13 205	240.5	8 103	161.8	21 308	402.3		
ABS	7	7	-	7	-	186	17.4	212	14.1	398	31.5		
<b>TOTAL</b>	<b>535</b>	<b>543</b>	<b>21</b>	<b>556</b>	<b>40</b>	<b>281 591</b>	<b>16 285.6</b>	<b>243 017</b>	<b>13 497.1</b>	<b>524 608</b>	<b>29 782.8</b>		

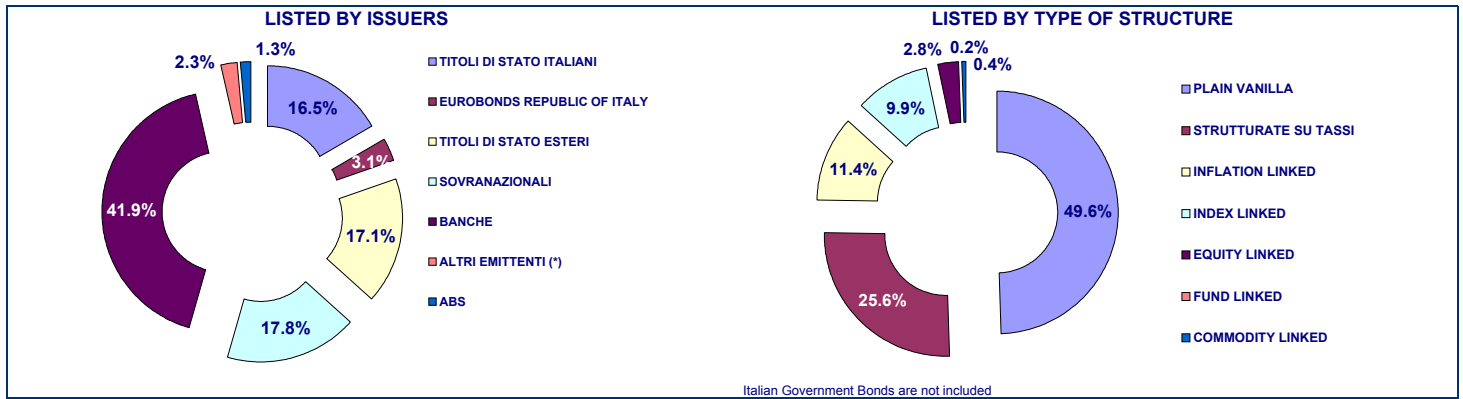
(\*) BOC and BOP are included

#### TYPE OF STRUCTURE

PLAIN VANILLA	212	219	11	230	24	26 932	655.7	20 919	514.2	47 851	1 170.0		
STRUCTURED INTEREST RATE	116	119	5	119	5	10 946	168.7	10 365	157.3	21 311	326.0		
INFLATION LINKED	51	51	-	53	2	9 250	177.1	9 599	151.3	18 849	328.4		
INDEX LINKED	47	46	1	46	1	6 231	85.8	5 167	66.6	11 398	152.4		
EQUITY LINKED	14	14	-	13	-	3 108	39.7	2 277	29.3	5 385	69.0		
FUND LINKED	1	1	-	1	-	163	1.8	123	1.2	286	3.0		
COMMODITY LINKED	2	2	-	2	-	274	2.8	419	4.5	693	7.3		

ITALIAN GOVERNMENT BONDS	92	91	4	92	8	224 687	15 154.0	194 148	12 572.7	418 835	27 726.7		
<b>TOTAL</b>	<b>535</b>	<b>543</b>	<b>21</b>	<b>556</b>	<b>40</b>	<b>281 591</b>	<b>16 285.6</b>	<b>243 017</b>	<b>13 497.1</b>	<b>524 608</b>	<b>29 782.8</b>		

**FOCUS ON LISTED BONDS - END OF MONTH**



**ISSUERS - MOST TRADED BONDS IN TERMS OF TURNOVER**

ITALIAN GOVERNMENT BONDS - FEBRUARY 2008				FOREIGN PUBLIC DEBT - FEBRUARY 2008			
ISIN	DESC	TURNOV eur m	TRADES	ISIN	DESC	TURNOV eur m	TRADES
IT0003934657	B.T.P. 05/37 TF 4.00% EUR	744.95	17 959	DE0001141430	BOBL 03/08 TF 3,50% EUR	6.40	83
IT0003493258	B.T.P. 03/19 TF 4,25% EUR	418.10	8 233	DE0001141422	BOBL 03/08 TF 3,00% EUR	4.01	29
IT0003438212	C.C.T. 03/10 TV EUR	315.67	4 697	XS0216258763	REPUBBLICA AUSTRIACA 05/20 TV EUR	2.21	150
IT0004026297	B.T.P. 06/11 TF 3,5% EUR	289.37	5 009	DE0001135226	BOBL 03/34 TF 4,75% EUR	1.82	30
IT0004164775	B.T.P. 06/17 TF 4% EUR	285.65	4 794	XS0221500571	REPUBBLICA AUSTRIACA 05/20 TV EUR	1.22	130

EUROBONDS REPUBLIC OF ITALY - FEBRUARY 2008				SUPRANATIONAL ENTITIES - FEBRUARY 2008			
ISIN	DESC	TURNOV eur m	TRADES	ISIN	DESC	TURNOV eur m	TRADES
US465410BG26	REPUBLIC OF ITALY 03/33 TF 5,375% USD	16.26	552	XS0249816579	B.E.I. 06/11 TF 3,625% EUR	20.18	562
US465410BF43	REPUBLIC OF ITALY 03/13 TF 4,375% USD	13.35	186	XS0093014610	B.E.I. 99/09 TF 4% EUR	12.15	381
US465410BK38	REPUBLIC OF ITALY 04/09 TF 3,25 USD	5.95	214	XS0156020587	B.E.I. 02/08 TF 4,50% GBP	8.75	251
US465410BN76	REPUBLIC OF ITALY 05/15 TF 4,50% USD	5.58	132	IT0006585449	BANCA EUROPEA INVESTIMENTI (BEI) 05/15 MULTI	6.21	297
US465410BH09	REPUBLIC OF ITALY 03/08 TF 2,5% USD	5.15	109	IT0006571829	B.E.I. 04/15 MULTI COUPON EUR	5.89	392

BANKS - FEBRUARY 2008				CORPORATE - FEBRUARY 2008			
ISIN	DESC	TURNOV eur m	TRADES	ISIN	DESC	TURNOV eur m	TRADES
XS0189530990	UNICREDITO ITALIANO 04/11 TV EUR	27.08	339	IT0004292691	ENEL 07/15 TV EUR	43.28	2 450
XS0185030698	UNICREDITO ITALIANO 04/14 TF 4,375% EUR	25.74	341	IT0004292683	ENEL 07/15 TF 5,25% EUR	29.92	1 922
IT0000958592	MEDIOBANCA 96/11 ZERO COUPON ITL	17.98	1 484	XS0129648621	FIAT 01/11 TF 6,75% EUR	25.58	1 165
IT0003594832	BANCA INTESA 04/09 TV EUR	17.29	1 120	XS0184374063	TELECOM ITALIA 04/11 TF 4,50% EUR	16.40	92
IT0003617674	BANCA INTESA 04/09 TV EUR	15.90	847	XS0184373925	TELECOM ITALIA 04/19 TF 5,375% EUR	14.93	83

**TYPE OF STRUCTURE - MOST TRADED BONDS IN TERMS OF TURNOVER**

PLAIN VANILLA - FEBRUARY 2008				STRUCTURED INTEREST RATE - FEBRUARY 2008			
ISIN	DESC	TURNOV eur m	TRADES	ISIN	DESC	TURNOV eur m	TRADES
IT0004292691	ENEL 07/15 TV EUR	43.28	2 450	XS0200676160	UNICREDITO ITALIANO 04/19 MULTI COUPON EUR	12.22	156
IT0004292683	ENEL 07/15 TF 5,25% EUR	29.92	1 922	IT0003694442	UNICREDIT EX CAPITALIA 04/14 MULTI COUPON SL	9.62	635
XS0189530990	UNICREDITO ITALIANO 04/11 TV EUR	27.08	339	XS0137544465	FIAT 01/11 STEP COUPON EUR	8.58	699
XS0185030698	UNICREDITO ITALIANO 04/14 TF 4,375% EUR	25.74	341	IT0001308607	CREDIOP 99/24 MULTI COUPON EUR	8.24	96
XS0129648621	FIAT 01/11 TF 6,75% EUR	25.58	1 165	IT0006585449	BANCA EUROPEA INVESTIMENTI (BEI) 05/15 MULTI	6.21	297

INFLATION LINKED - FEBRUARY 2008				INDEX LINKED - FEBRUARY 2008			
ISIN	DESC	TURNOV eur m	TRADES	ISIN	DESC	TURNOV eur m	TRADES
IT0003594832	BANCA INTESA 04/09 TV EUR	17.29	1 120	IT0003035299	UNICREDITO ITALIANO 00/10 MULTI COUPON EUR	9.51	696
IT0003617674	BANCA INTESA 04/09 TV EUR	15.90	847	XS0208904796	GOLDMAN SACHS GROUP 05/10 MULTI COUPON EI	6.26	461
IT0003490528	BANCA INTESA 03/08 TV EUR	15.66	992	XS0276162327	LEHMAN BROTHERS TREASURY CO. B.V. 06/10 ON	6.01	100
IT0003455919	BANCA INTESA 03/08 TV EUR	9.70	473	IT0003724066	UNICREDIT EX CAPITALIA 04/09 MULTI COUPON EL	5.62	349
IT0003672976	BANCA INTESA 04/09 TV EUR	8.91	592	IT0006566043	DRESDNER BANK 04/09 ONE COUPON EUR	3.74	355

EQUITY LINKED - FEBRUARY 2008				FUND LINKED - FEBRUARY 2008			
ISIN	DESC	TURNOV eur m	TRADES	ISIN	DESC	TURNOV eur m	TRADES
IT0003536825	BANCA INTESA 03/08 MULTI COUPON EUR	8.87	761	IT0003492375	CREDEM 03/08 ONE COUPON EUR	1.25	123
IT0003417067	MEDIOBANCA 03/08 TV EUR	4.96	108				
IT0003406284	UNICREDIT EX CAPITALIA 03/08 MULTI COUF	2.86	112				
IT0006563974	BAYERISCHE HYPO-UND VEREINSBANK 03/0	2.45	251				
IT0003489140	BANCA INTESA 03/08 MULTI COUPON EUR	1.69	158				

Italian Government Bonds are not included in the analysis for type of structure

**News**  
 DomesticMOT: MEDIOBANCA "2 inflation linked bonds"  
 Issue Programs: MERRILL LYNCH & CO., INC. "3 Base Prospectus"  
 EuroMOT: EIB - EUR and GBP fixed rate bonds.



Research & Development  
 Piazza degli Affari, 6 - 20123 - Milano  
 Tel +39 02 72426.478 - Fax +39 02 8646.4323  
 e-mail: research@borsaitaliana.it  
[www.borsaitaliana.it](http://www.borsaitaliana.it)

The diffusion of this document does not represent solicitation, by Borsa Italiana S.p.A., of public saving and is not to be considered as suggestion by Borsa Italiana S.p.A. to the suitability of the investment, if any, herein described. This document has not to be considered complete and it is meant for information and personal purposes only. Borsa Italiana S.p.A. accepts no liability arising, without limitation to the generality of foregoing from inaccuracies and/or mistakes, for decisions and/or actions taken by any part based on the document. Trademarks Borsa Italiana, MTA, MTF, IOR, STAR, bestSTAR, Sebbit, Teleri, MOT, EuroMOT, DomesticMOT, MTA, TANK, Expand, S&P, MIB, MIB30, MIB100, MIB50, MIB150, MIB200, MIB300, MIB400, MIB500, MIB600, MIB700, MIB800, MIB900, MIB1000, MIB1100, MIB1200, MIB1300, MIB1400, MIB1500, MIB1600, MIB1700, MIB1800, MIB1900, MIB2000, MIB2100, MIB2200, MIB2300, MIB2400, MIB2500, MIB2600, MIB2700, MIB2800, MIB2900, MIB3000, MIB3100, MIB3200, MIB3300, MIB3400, MIB3500, MIB3600, MIB3700, MIB3800, MIB3900, MIB4000, MIB4100, MIB4200, MIB4300, MIB4400, MIB4500, MIB4600, MIB4700, MIB4800, MIB4900, MIB5000, MIB5100, MIB5200, MIB5300, MIB5400, MIB5500, MIB5600, MIB5700, MIB5800, MIB5900, MIB6000, MIB6100, MIB6200, MIB6300, MIB6400, MIB6500, MIB6600, MIB6700, MIB6800, MIB6900, MIB7000, MIB7100, MIB7200, MIB7300, MIB7400, MIB7500, MIB7600, MIB7700, MIB7800, MIB7900, MIB8000, MIB8100, MIB8200, MIB8300, MIB8400, MIB8500, MIB8600, MIB8700, MIB8800, MIB8900, MIB9000, MIB9100, MIB9200, MIB9300, MIB9400, MIB9500, MIB9600, MIB9700, MIB9800, MIB9900, MIB10000, MIB10100, MIB10200, MIB10300, MIB10400, MIB10500, MIB10600, MIB10700, MIB10800, MIB10900, MIB11000, MIB11100, MIB11200, MIB11300, MIB11400, MIB11500, MIB11600, MIB11700, MIB11800, MIB11900, MIB12000, MIB12100, MIB12200, MIB12300, MIB12400, MIB12500, MIB12600, MIB12700, MIB12800, MIB12900, MIB13000, MIB13100, MIB13200, MIB13300, MIB13400, MIB13500, MIB13600, MIB13700, MIB13800, MIB13900, MIB14000, MIB14100, MIB14200, MIB14300, MIB14400, MIB14500, MIB14600, MIB14700, MIB14800, MIB14900, MIB15000, MIB15100, MIB15200, MIB15300, MIB15400, MIB15500, MIB15600, MIB15700, MIB15800, MIB15900, MIB16000, MIB16100, MIB16200, MIB16300, MIB16400, MIB16500, MIB16600, MIB16700, MIB16800, MIB16900, MIB17000, MIB17100, MIB17200, MIB17300, MIB17400, MIB17500, MIB17600, MIB17700, MIB17800, MIB17900, MIB18000, MIB18100, MIB18200, MIB18300, MIB18400, MIB18500, MIB18600, MIB18700, MIB18800, MIB18900, MIB19000, MIB19100, MIB19200, MIB19300, MIB19400, MIB19500, MIB19600, MIB19700, MIB19800, MIB19900, MIB20000, MIB20100, MIB20200, MIB20300, MIB20400, MIB20500, MIB20600, MIB20700, MIB20800, MIB20900, MIB21000, MIB21100, MIB21200, MIB21300, MIB21400, MIB21500, MIB21600, MIB21700, MIB21800, MIB21900, MIB22000, MIB22100, MIB22200, MIB22300, MIB22400, MIB22500, MIB22600, MIB22700, MIB22800, MIB22900, MIB23000, MIB23100, MIB23200, MIB23300, MIB23400, MIB23500, MIB23600, MIB23700, MIB23800, MIB23900, MIB24000, MIB24100, MIB24200, MIB24300, MIB24400, MIB24500, MIB24600, MIB24700, MIB24800, MIB24900, MIB25000, MIB25100, MIB25200, MIB25300, MIB25400, MIB25500, MIB25600, MIB25700, MIB25800, MIB25900, MIB26000, MIB26100, MIB26200, MIB26300, MIB26400, MIB26500, MIB26600, MIB26700, MIB26800, MIB26900, MIB27000, MIB27100, MIB27200, MIB27300, MIB27400, MIB27500, MIB27600, MIB27700, MIB27800, MIB27900, MIB28000, MIB28100, MIB28200, MIB28300, MIB28400, MIB28500, MIB28600, MIB28700, MIB28800, MIB28900, MIB29000, MIB29100, MIB29200, MIB29300, MIB29400, MIB29500, MIB29600, MIB29700, MIB29800, MIB29900, MIB30000, MIB30100, MIB30200, MIB30300, MIB30400, MIB30500, MIB30600, MIB30700, MIB30800, MIB30900, MIB31000, MIB31100, MIB31200, MIB31300, MIB31400, MIB31500, MIB31600, MIB31700, MIB31800, MIB31900, MIB32000, MIB32100, MIB32200, MIB32300, MIB32400, MIB32500, MIB32600, MIB32700, MIB32800, MIB32900, MIB33000, MIB33100, MIB33200, MIB33300, MIB33400, MIB33500, MIB33600, MIB33700, MIB33800, MIB33900, MIB34000, MIB34100, MIB34200, MIB34300, MIB34400, MIB34500, MIB34600, MIB34700, MIB34800, MIB34900, MIB35000, MIB35100, MIB35200, MIB35300, MIB35400, MIB35500, MIB35600, MIB35700, MIB35800, MIB35900, MIB36000, MIB36100, MIB36200, MIB36300, MIB36400, MIB36500, MIB36600, MIB36700, MIB36800, MIB36900, MIB37000, MIB37100, MIB37200, MIB37300, MIB37400, MIB37500, MIB37600, MIB37700, MIB37800, MIB37900, MIB38000, MIB38100, MIB38200, MIB38300, MIB38400, MIB38500, MIB38600, MIB38700, MIB38800, MIB38900, MIB39000, MIB39100, MIB39200, MIB39300, MIB39400, MIB39500, MIB39600, MIB39700, MIB39800, MIB39900, MIB40000, MIB40100, MIB40200, MIB40300, MIB40400, MIB40500, MIB40600, MIB40700, MIB40800, MIB40900, MIB41000, MIB41100, MIB41200, MIB41300, MIB41400, MIB41500, MIB41600, MIB41700, MIB41800, MIB41900, MIB42000, MIB42100, MIB42200, MIB42300, MIB42400, MIB42500, MIB42600, MIB42700, MIB42800, MIB42900, MIB43000, MIB43100, MIB43200, MIB43300, MIB43400, MIB43500, MIB43600, MIB43700, MIB43800, MIB43900, MIB44000, MIB44100, MIB44200, MIB44300, MIB44400, MIB44500, MIB44600, MIB44700, MIB44800, MIB44900, MIB45000, MIB45100, MIB45200, MIB45300, MIB45400, MIB45500, MIB45600, MIB45700, MIB45800, MIB45900, MIB46000, MIB46100, MIB46200, MIB46300, MIB46400, MIB46500, MIB46600, MIB46700, MIB46800, MIB46900, MIB47000, MIB47100, MIB47200, MIB47300, MIB47400, MIB47500, MIB47600, MIB47700, MIB47800, MIB47900, MIB48000, MIB48100, MIB48200, MIB48300, MIB48400, MIB48500, MIB48600, MIB48700, MIB48800, MIB48900, MIB49000, MIB49100, MIB49200, MIB49300, MIB49400, MIB49500, MIB49600, MIB49700, MIB49800, MIB49900, MIB50000, MIB50100, MIB50200, MIB50300, MIB50400, MIB50500, MIB50600, MIB50700, MIB50800, MIB50900, MIB51000, MIB51100, MIB51200, MIB51300, MIB51400, MIB51500, MIB51600, MIB51700, MIB51800, MIB51900, MIB52000, MIB52100, MIB52200, MIB52300, MIB52400, MIB52500, MIB52600, MIB52700, MIB52800, MIB52900, MIB53000, MIB53100, MIB53200, MIB53300, MIB53400, MIB53500, MIB53600, MIB53700, MIB53800, MIB53900, MIB54000, MIB54100, MIB54200, MIB54300, MIB54400, MIB54500, MIB54600, MIB54700, MIB54800, MIB54900, MIB55000, MIB55100, MIB55200, MIB55300, MIB55400, MIB55500, MIB55600, MIB55700, MIB55800, MIB55900, MIB56000, MIB56100, MIB56200, MIB56300, MIB56400, MIB56500, MIB56600, MIB56700, MIB56800, MIB56900, MIB57000, MIB57100, MIB57200, MIB57300, MIB57400, MIB57500, MIB57600, MIB57700, MIB57800, MIB57900, MIB58000, MIB58100, MIB58200, MIB58300, MIB58400, MIB58500, MIB58600, MIB58700, MIB58800, MIB58900, MIB59000, MIB59100, MIB59200, MIB59300, MIB59400, MIB59500, MIB59600, MIB59700, MIB59800, MIB59900, MIB60000, MIB60100, MIB60200, MIB60300, MIB60400, MIB60500, MIB60600, MIB60700, MIB60800, MIB60900, MIB61000, MIB61100, MIB61200, MIB61300, MIB61400, MIB61500, MIB61600, MIB61700, MIB61800, MIB61900, MIB62000, MIB62100, MIB62200, MIB62300, MIB62400, MIB62500, MIB62600, MIB62700, MIB62800, MIB62900, MIB63000, MIB63100, MIB63200, MIB63300, MIB63400, MIB63500, MIB63600, MIB63700, MIB63800, MIB63900, MIB64000, MIB64100, MIB64200, MIB64300, MIB64400, MIB64500, MIB64600, MIB64700, MIB64800, MIB64900, MIB65000, MIB65100, MIB65200, MIB65300, MIB65400, MIB65500, MIB65600, MIB65700, MIB65800, MIB65900, MIB66000, MIB66100, MIB66200, MIB66300, MIB66400, MIB66500, MIB66600, MIB66700, MIB66800, MIB66900, MIB67000, MIB67100, MIB67200, MIB67300, MIB67400, MIB67500, MIB67600, MIB67700, MIB67800, MIB67900, MIB68000, MIB68100, MIB68200, MIB68300, MIB68400, MIB68500, MIB68600, MIB68700, MIB68800, MIB68900, MIB69000, MIB69100, MIB69200, MIB69300, MIB69400, MIB69500, MIB69600, MIB69700, MIB69800, MIB69900, MIB70000, MIB70100, MIB70200, MIB70300, MIB70400, MIB70500, MIB70600, MIB70700, MIB70800, MIB70900, MIB71000, MIB71100, MIB71200, MIB71300, MIB71400, MIB71500, MIB71600, MIB71700, MIB71800, MIB71900, MIB72000, MIB72100, MIB72200, MIB72300, MIB72400, MIB72500, MIB72600, MIB72700, MIB72800, MIB72900, MIB73000, MIB73100, MIB73200, MIB73300, MIB73400, MIB73500, MIB73600, MIB73700, MIB73800, MIB73900, MIB74000, MIB74100, MIB74200, MIB74300, MIB74400, MIB74500, MIB74600, MIB74700, MIB74800, MIB74900, MIB75000, MIB75100, MIB75200, MIB75300, MIB75400, MIB75500, MIB75600, MIB75700, MIB75800, MIB75900, MIB76000, MIB76100, MIB76200, MIB76300, MIB76400, MIB76500, MIB76600, MIB76700, MIB76800, MIB76900, MIB77000, MIB77100, MIB77200, MIB77300, MIB77400, MIB77500, MIB77600, MIB77700, MIB77800, MIB77900, MIB78000, MIB78100, MIB78200, MIB78300, MIB78400, MIB78500, MIB78600, MIB78700, MIB78800, MIB78900, MIB79000, MIB79100, MIB79200, MIB79300, MIB79400, MIB79500, MIB79600, MIB79700, MIB79800, MIB79900, MIB80000, MIB80100, MIB80200, MIB80300, MIB80400, MIB80500, MIB80600, MIB80700, MIB80800, MIB80900, MIB81000, MIB81100, MIB81200, MIB81300, MIB81400, MIB81500, MIB81600, MIB81700, MIB81800, MIB81900, MIB82000, MIB82100, MIB82200, MIB82300, MIB82400, MIB82500, MIB82600, MIB82700, MIB82800, MIB82900, MIB83000, MIB83100, MIB83200, MIB83300, MIB83400, MIB83500, MIB83600, MIB83700, MIB83800, MIB83900, MIB84000, MIB84100, MIB84200, MIB84300, MIB84400, MIB84500, MIB84600, MIB84700, MIB84800, MIB84900, MIB85000, MIB85100, MIB85200, MIB85300, MIB85400, MIB85500, MIB85600, MIB85700, MIB85800, MIB85900, MIB86000, MIB86100, MIB86200, MIB86300, MIB86400, MIB86500, MIB86600, MIB86700, MIB86800, MIB8