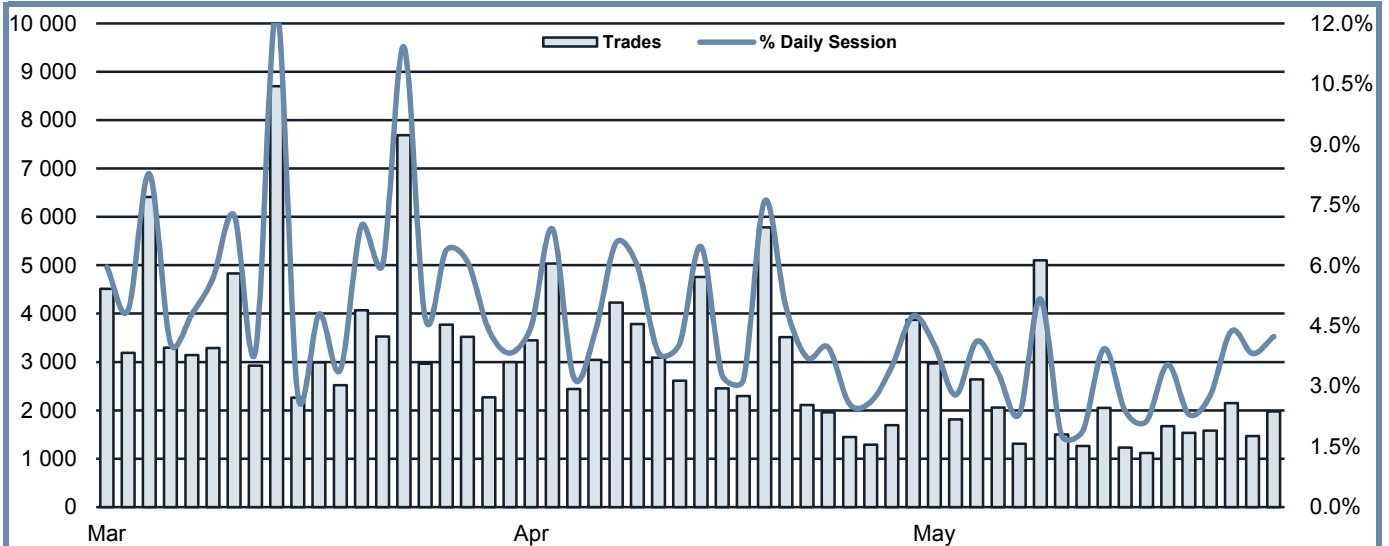




TAH Statistics

MAY 2014

TRADING AFTER HOURS - TOTAL TRADES

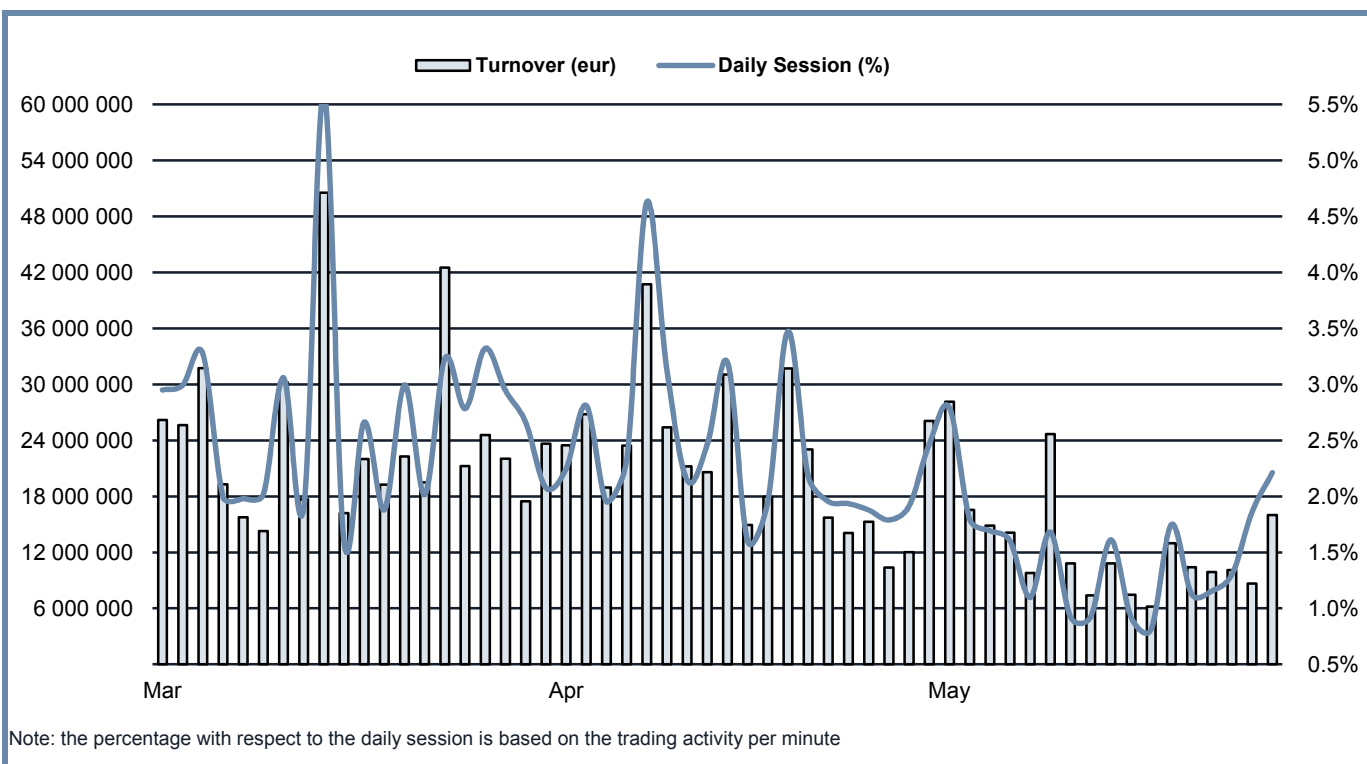


Note: the percentage with respect to the daily session is based on the trading activity per minute

TRADING ACTIVITY

	FTSEMIB SHARES	FTSEMIB SHARES	OTHER SHARES	OTHER SHARES	TOTAL	
	TRADES	TURNOVER eur	TRADES	TURNOVER eur	TRADES	TURNOVER eur
<b>MONTHLY TOTAL</b>						
MARCH - 2014	74 709	488 742 632	7 610	16 734 733	82 319	505 477 365
APRIL - 2014	44 178	331 503 600	4 380	9 399 574	48 558	340 903 174
MAY - 2014	37 291	261 090 730	3 011	6 204 155	40 302	267 294 884
<b>TOTAL 2012</b>	241 817	1 937 509 857	311	583 437	242 128	1 938 093 294
<b>TOTAL 2013</b>	502 268	3 510 207 489	7 078	17 113 580	509 346	3 527 321 069
<b>TOTAL 2014</b>	270 838	1 716 713 217	29 561	64 171 635	300 399	1 780 884 852
<b>DAILY AVERAGE</b>						
MARCH - 2014	3 558	23 273 459	362	796 892	3 920	24 070 351
APRIL - 2014	2 945	22 100 240	292	626 638	3 237	22 726 878
MAY - 2014	1 865	13 054 536	151	310 208	2 015	13 364 744
<b>TOTAL 2012</b>	1 740	13 938 920	2	4 197	1 742	13 943 117
<b>TOTAL 2013</b>	2 293	16 028 345	32	78 144	2 326	16 106 489
<b>TOTAL 2014</b>	2 851	18 070 665	311	675 491	3 162	18 746 156
<b>DAILY FIGURES</b>						
05/05/2014	1 159	10 055 245	133	305 368	1 292	10 360 614
06/05/2014	1 499	11 569 898	195	446 969	1 694	12 016 867
07/05/2014	3 769	25 879 724	104	188 946	3 873	26 068 671
08/05/2014	2 779	27 762 749	190	388 929	2 969	28 151 677
09/05/2014	1 618	16 141 837	196	414 998	1 814	16 556 835
12/05/2014	2 467	14 593 107	175	277 371	2 642	14 870 479
13/05/2014	1 967	14 008 439	93	118 921	2 060	14 127 360
14/05/2014	1 260	9 692 038	48	95 872	1 308	9 787 910
15/05/2014	4 881	24 152 050	220	508 797	5 101	24 660 847
16/05/2014	1 392	10 528 865	108	291 051	1 500	10 819 915
19/05/2014	1 168	7 252 348	98	147 791	1 266	7 400 139
20/05/2014	1 910	10 617 734	141	184 857	2 051	10 802 591
21/05/2014	1 131	7 291 429	99	160 278	1 230	7 451 707
22/05/2014	886	5 618 126	233	573 758	1 119	6 191 884
23/05/2014	1 563	12 722 923	113	271 655	1 676	12 994 577
26/05/2014	1 480	10 214 653	53	189 282	1 533	10 403 935
27/05/2014	1 373	9 437 250	207	438 264	1 580	9 875 515
28/05/2014	1 926	9 678 623	223	421 687	2 149	10 100 310
29/05/2014	1 397	8 502 303	73	160 435	1 470	8 662 739
30/05/2014	1 666	15 371 388	309	618 925	1 975	15 990 314

## TRADING AFTER HOURS - DAILY TURNOVER



## MOST TRADED SHARES IN THE MONTH

## TRADES

## TURNOVER

SHARES	TRADES			TURNOVER eur m	SHARES	TURNOVER			TRADES number
	number	% TOT of TAH	% CUM			eur m	% TOT of TAH	% CUM	
1 UNICREDIT	4 245	10.5%	10.5%	57.3	1 UNICREDIT	57.325	21.4%	21.4%	4 245
2 FIAT	3 923	9.7%	20.3%	26.9	2 INTESA SANPAOLO	38.713	14.5%	35.9%	3 764
3 INTESA SANPAOLO	3 764	9.3%	29.6%	38.7	3 ENI	34.063	12.7%	48.7%	2 272
4 ENEL	2 391	5.9%	35.5%	16.8	4 FIAT	26.874	10.1%	58.7%	3 923
5 ENI	2 272	5.6%	41.2%	34.1	5 ENEL	16.827	6.3%	65.0%	2 391
6 CELL THERAPEUTICS	2 200	5.5%	46.6%	4.3	6 BANCA MONTE PASCHI SIENA	8.6691	3.2%	68.3%	1 651
7 TELECOM ITALIA	2 004	5.0%	51.6%	7.4	7 TELECOM ITALIA	7.3552	2.8%	71.0%	2 004
8 BANCA MONTE PASCHI SIENA	1 651	4.1%	55.7%	8.7	8 BANCA POPOLARE MILANO	5.8833	2.2%	73.2%	1 199
9 MEDIASET	1 290	3.2%	58.9%	5.0	9 TENARIS	5.8407	2.2%	75.4%	854
10 BANCO POPOLARE	1 269	3.1%	62.1%	5.6	10 BANCO POPOLARE	5.6357	2.1%	77.5%	1 269
11 BANCA POPOLARE MILANO	1 199	3.0%	65.0%	5.9	11 MEDIASET	4.9503	1.9%	79.4%	1 290
12 FINMECCANICA	970	2.4%	67.4%	3.3	12 GENERALI	4.3511	1.6%	81.0%	764
13 UBI BANCA	962	2.4%	69.8%	4.1	13 CELL THERAPEUTICS	4.3388	1.6%	82.6%	2 200
14 CNH INDUSTRIAL	878	2.2%	72.0%	3.1	14 UBI BANCA	4.066	1.5%	84.1%	962
15 TENARIS	854	2.1%	74.1%	5.8	15 STMICROELECTRONICS	4.0005	1.5%	85.6%	739
16 UNIPOLSAI	852	2.1%	76.2%	3.2	16 PRYSMIAN	3.7166	1.4%	87.0%	818
17 PRYSMIAN	818	2.0%	78.3%	3.7	17 FINMECCANICA	3.2678	1.2%	88.2%	970
18 GENERALI	764	1.9%	80.2%	4.4	18 UNIPOLSAI	3.1793	1.2%	89.4%	852
19 STMICROELECTRONICS	739	1.8%	82.0%	4.0	19 CNH INDUSTRIAL	3.1491	1.2%	90.6%	878
20 SNAM	650	1.6%	83.6%	2.9	20 SNAM	2.8589	1.1%	91.7%	650

Markets Analysis  
Piazza degli Affari, 6 - 20123 Milano  
T +39 02 724261 | Fax +39 02 8646.4323  
e-mail: markets\_analysis@borsaitaliana.it  
[www.borsaitaliana.it](http://www.borsaitaliana.it)

This document contains text, data, graphics, photographs, illustrations, artwork, names, logos, trade marks, service marks and information ("Information") connected with Borsa Italiana S.p.A. ("Borsa Italiana").  
All reasonable efforts have been made to ensure that the Information in this document was correct at the time of publication. However, Borsa Italiana Spa accepts no liability for decisions taken, or systems-related or other work carried out by any party based on this document. The publication of this document does not represent solicitation, by Borsa Italiana, of public saving and is not to be considered as a recommendation by Borsa Italiana as to the suitability of the investment, if any, herein described.